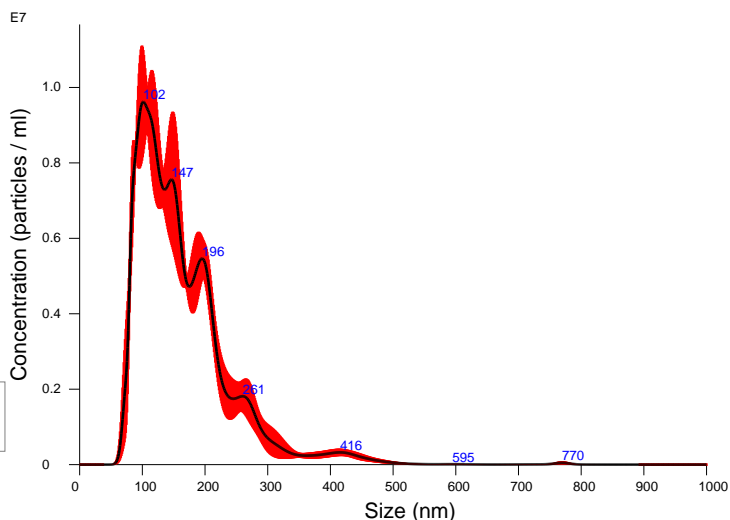


FTLA Concentration / Size graph for Experiment:  
100k\_1a10 2024-02-27 14-20-33



Averaged FTLA Concentration / Size for Experiment:  
100k\_1a10 2024-02-27 14-20-33  
Error bars indicate + / -1 standard error of the mean

**Included Files**

100k\_1a10 2024-02-27 14-20-42  
100k\_1a10 2024-02-27 14-23-57  
100k\_1a10 2024-02-27 14-25-02

**Details**

NTA Version: NTA 3.4 Build 3.4.4  
Script Used: SOP Standard Measurement 02-19-41PM 27~  
Time Captured: 14:20:33 27/02/2024  
Operator:  
Pre-treatment:  
Sample Name:  
Diluent:  
Remarks:

**Capture Settings**

Camera Type: sCMOS  
Laser Type: Blue488  
Camera Level: 15  
Slider Shutter: 1206  
Slider Gain: 245  
FPS: 25.0  
Number of Frames: 1498  
Temperature: 23.2 - 23.4 °C  
Viscosity: (Water) 0.922 - 0.926 cP  
Dilution factor: 1 x 10e1  
Syringe Pump Speed: 30

**Analysis Settings**

Detect Threshold: 5  
Blur Size: Auto  
Max Jump Distance: Auto: 12.2 - 13.2 pix

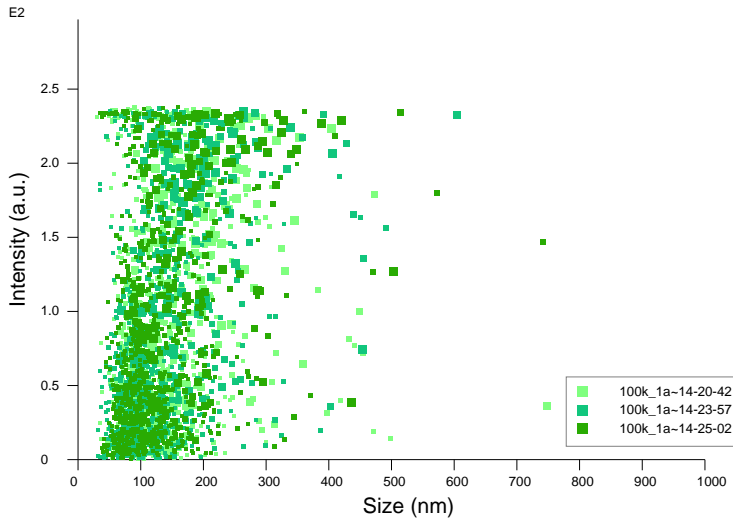
**Results**

Stats: Merged Data

Mean: 163.8 nm  
Mode: 101.5 nm  
SD: 77.3 nm  
D10: 91.0 nm  
D50: 145.7 nm  
D90: 256.9 nm

Stats: Mean +/- Standard Error

Mean: 163.8 +/- 1.4 nm  
Mode: 105.0 +/- 5.6 nm  
SD: 77.4 +/- 1.7 nm  
D10: 91.0 +/- 1.7 nm  
D50: 144.7 +/- 2.5 nm  
D90: 260.2 +/- 9.1 nm  
Concentration (Upgrade): 1.16e+09 +/- 3.74e+07 particles/ml  
19.9 +/- 0.6 particles/frame  
22.7 +/- 0.6 centres/frame



Intensity / Size graph for Experiment:  
100k\_1a10 2024-02-27 14-20-33

**Script Used: (Full Text):**

SOP Standard Measurement 02-19-41PM 27Feb2024.txt