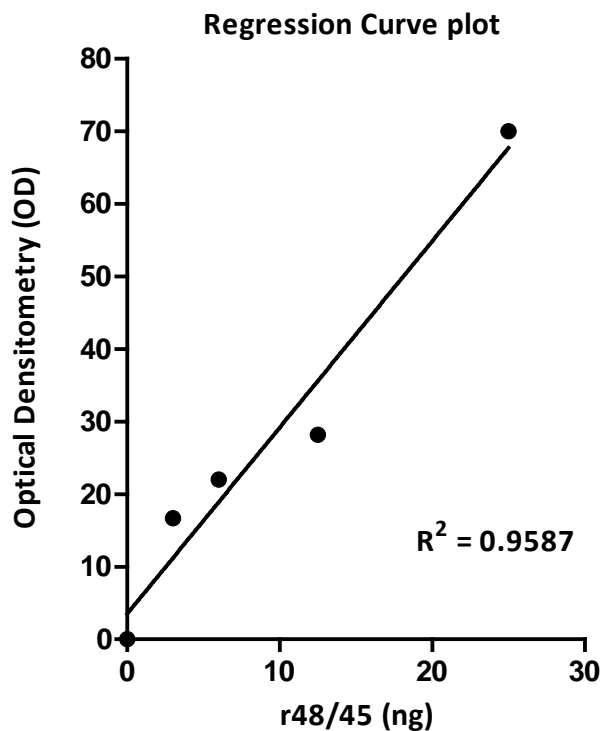


**A****B**

Sample	Total protein (ng)	OD	OD (-*b/g)	**Pfs48/45 (ng)	% **Pfs48/45
<b>r48/45 (R0.10C)</b>	50	102.99	80.56	n.a	35
	25	92.45	70.02	n.a	35
	12.5	50.63	28.20	n.a	35
	6	44.43	22.00	n.a	35
	3	39.12	16.68	n.a	35
	0	22.43	0	n.a.	n.a
<b>Pf Gam</b>	500	48.87	26.44	3.12	<b>0.62</b>
<b>PbWT</b>	500	24.26	1.83	n.a	n.a
<b>Pfs48/45@PbMSP1</b>	500	35.08	12.65	1.25	<b>0.25</b>
	250	28.09	5.65	0.29	<b>0.12</b>
<b>*Background</b>	0	22.43	0.00	n.a	n.a

**Figure S1. Quantification of Pfs48/45 protein in Pfs48/45@PbMSP1 schizont lysate by Western blot analyses as shown in Figure 2A.**

Densitometry and regression curve analysis was performed on signals after probing Pfs48/45@PbMSP1 schizont lysate (500 ng) and a dilution series (50, 25, 12.5, 6 and 3 ng) of recombinant Pfs48/45 fusion protein (r48/45; R0.10C) with antibody 45.1.

A. Regression analysis based on the dilution series of recombinant Pfs48/45 fusion (R0.10C).

B. Optical densitometry (OD) values of signals before and after \*background (b/g) subtraction and the calculated protein content and the percentage of Pfs48/45 protein of the total amount of protein in the *P. falciparum* gametocyte (Pf Gam), *P. berghei* WT schizont (PbWT) and Pfs48/45@PbMSP1 schizont lysates. \*\* To calculate the amount and percentage of Pfs48/45 in the protein samples we adjusted for the proportion of Pfs48/45 (approximately 35%) in the recombinant protein R0.10C (a GLURP::Pfs48/45 fusion protein).