

## **SUPPLEMENTARY MATERIAL**

# **Association of premorbid GLP-1RA and SGLT-2i prescription alone and in combination with COVID-19 Severity**

### **Authors**

Klara R. Klein<sup>1</sup>, Trine J. Abrahamsen<sup>2</sup>, Anna R. Kahkoska<sup>1,3</sup>, G. Caleb Alexander<sup>4,5,6</sup>,  
Christopher G. Chute<sup>7</sup>, Melissa Haendel<sup>8</sup>, Stephanie S. Hong<sup>6</sup>, Hemalkumar Mehta<sup>5</sup>,  
Richard Moffitt<sup>9</sup>, Til Stürmer<sup>10</sup>, Kajsa Kvist<sup>2</sup>, John B. Buse<sup>1</sup> on behalf of the N3C  
consortium

### **Affiliations**

<sup>1</sup>Division of Endocrinology and Metabolism, Department of Medicine, University of North  
Carolina School of Medicine, Chapel Hill, North Carolina, USA

<sup>2</sup>Trine Julie Abrahamsen, PhD: Novo Nordisk A/S, Søborg, Denmark

<sup>3</sup>Department of Nutrition, Gillings School of Global Public Health, University of North  
Carolina at Chapel Hill

<sup>4</sup>Center for Drug Safety and Effectiveness, Johns Hopkins Bloomberg School of Public  
Health, Baltimore, MD

<sup>5</sup>Department of Epidemiology, Johns Hopkins, Bloomberg School of Public Health,  
Baltimore, MD

<sup>6</sup>Division of General Internal Medicine, Johns Hopkins Medicine, Baltimore, MD

<sup>7</sup>Schools of Medicine, Public Health, and Nursing; Johns Hopkins University, Baltimore, MD 21287

<sup>8</sup>Center for Health AI, University of Colorado School of Medicine, Aurora, CO

<sup>9</sup> Department of Biomedical Informatics, Stony Brook University, Stony Brook, NY

<sup>10</sup>Department of Epidemiology, Gillings School of Global Public Health, University of North Carolina at Chapel Hill, Chapel Hill, NC

### **Corresponding Author**

Klara R. Klein, Division of Endocrinology and Metabolism, Campus Box #7172, 8072 Burnett Womack, 160 Dental Circle, Chapel Hill NC 27599, Tel: (919)-966-0134, Fax (919)-966-6025, E-mail: [klara\\_klein@med.unc.edu](mailto:klara_klein@med.unc.edu)

**TABLES:**

**Supplementary Table S1.** Crude primary and secondary outcomes, according to premorbid medication use of GLP-1RA, SGLT-2i, and DPP-4i.

<b>Outcome</b>	<b>All (N = 78,806)</b>	<b>GLP-1RA (N = 42,799)</b>	<b>SGLT-2i (N = 25,421)</b>	<b>DPP-4i (N = 20,200)</b>
60-day mortality* – E (%)	3,070 (3.90)	1,148 (2.68)	756 (2.97)	1,413 (7.00)
Emergency room visit‡ – E (%)	23,366 (29.65)	11,503 (26.88)	7,279 (28.63)	7,205 (35.67)
Hospitalization‡ – E (%)	18,109 (22.98)	7,975 (18.63)	5,556 (21.86)	6,425 (31.81)
Mechanical ventilation (Intubation or ventilation)‡ – E (%)	3,318 (4.21)	1,619 (3.78)	1,083 (4.26)	991 (4.91)

\* Within 60 days after positive SARS-CoV-2 test, ‡ Within 14 days after a positive

SARS-CoV-2 test, N: Total number of individuals, E: number of outcome events (first event only), %: proportion of individuals with the outcome

Abbreviations: DPP-4i, dipeptidyl peptidase-4 inhibitor; GLP-1RA, glucagon-like peptide 1 receptor agonist; SGLT-2i, sodium glucose co-transporter 2 inhibitor

**Supplementary Table S2.** Odds ratios in age-restricted cohort for 60-day mortality and secondary outcomes for use of GLP-1RA vs. DPP-4i and use of SGLT-2i vs. DPP-4i<sup>#</sup>.

<b>Outcome</b>	<b>Model</b>	<b>GLP-1RA vs DPP-4i OR (95% CI)</b>	<b>SGLT-2i vs DPP-4i OR (95% CI)</b>
60-day mortality*	TMLE	0.64 (0.59-0.69)	0.57 (0.52-0.63)
	IPTW	0.64 (0.59-0.70)	0.53 (0.49-0.58)
Emergency room visit <sup>‡</sup>	TMLE	0.78 (0.75-0.81)	0.80 (0.77-0.84)
	IPTW	0.79 (0.76-0.82)	0.80 (0.77-0.83)
Hospitalization <sup>‡</sup>	TMLE	0.70 (0.67-0.73)	0.74 (0.71-0.77)
	IPTW	0.69 (0.67-0.72)	0.72 (0.69-0.75)
Mechanical ventilation (Intubation or ventilation) <sup>‡</sup>	TMLE	1.01 (0.92-1.10)	0.99 (0.90-1.08)
	IPTW	1.02 (0.94-1.12)	0.97 (0.89-1.06)

<sup>#</sup> The age-restricted cohort included only individuals aged 45–80 years (33,579 GLP-1RA users, 21,625 SGLT-2i users, and 16,503 DPP-4i users).

\* Within 60 days after positive SARS-CoV-2 test, <sup>‡</sup> Within 14 days after a positive SARS-CoV-2 test

Abbreviations: DPP-4i, dipeptidyl peptidase-4 inhibitor; GLP-1RA, glucagon-like peptide 1 receptor agonist; IPTW, inverse probability treatment weighted; OR, odds ratio; SGLT-2i, sodium glucose co-transporter 2 inhibitor; TMLE, targeted maximum likelihood estimation

**Supplementary Table S3.** Odds ratios in eGFR-restricted cohort for 60-day mortality and secondary outcomes for use of GLP-1RA vs. DPP-4i and use of SGLT-2i vs. DPP-4i#.

<b>Outcome</b>	<b>Model</b>	<b>GLP-1RA vs DPP-4i OR (95% CI)</b>	<b>SGLT-2i vs DPP-4i OR (95% CI)</b>
60-day mortality*	TMLE	0.58 (0.49 - 0.69)	0.59 (0.53 - 0.67)
	IPTW	0.60 (0.53 - 0.68)	0.53 (0.47 - 0.59)
Emergency room visit‡	TMLE	0.80 (0.75 - 0.86)	0.86 (0.82 - 0.90)
	IPTW	0.79 (0.76 - 0.83)	0.83 (0.79 - 0.87)
Hospitalization‡	TMLE	0.67 (0.62 - 0.72)	0.76 (0.72 - 0.80)
	IPTW	0.69 (0.65 - 0.72)	0.73 (0.70 - 0.77)
Mechanical ventilation (Intubation or ventilation)‡	TMLE	0.80 (0.64 - 1.00)	0.89 (0.79 - 1.01)
	IPTW	0.80 (0.71 - 0.89)	0.88 (0.78 - 0.98)

# The eGFR-restricted cohort included only individuals with eGFR  $\geq$  45 mL/min (38,730 GLP-1RA users, 23,128 SGLT-2i users, and 16,172 DPP-4i users).

\* Within 60 days after positive SARS-CoV-2 test, ‡ Within 14 days after a positive SARS-CoV-2 test

Abbreviations: DPP-4i, dipeptidyl peptidase-4 inhibitor; GLP-1RA, glucagon-like peptide 1 receptor agonist; IPTW, inverse probability treatment weighted; OR, odds ratio; SGLT-2i, sodium glucose co-transporter 2 inhibitor; TMLE, targeted maximum likelihood estimation

**Supplementary Table S4.** Odds ratios adjusted for age and sex (sensitivity analysis using a simple model) for 60-day mortality and secondary outcomes for use of GLP-1RA vs. DPP-4i and use of SGLT-2i vs. DPP-4i.

<b>Outcome</b>	<b>Model</b>	<b>GLP-1RA vs DPP-4i OR (95% CI)</b>	<b>SGLT-2i vs DPP-4i OR (95% CI)</b>
60-day mortality*	TMLE	0.64 (0.59 - 0.69)	0.57 (0.52 - 0.63)
	IPTW	0.64 (0.59 - 0.70)	0.53 (0.49 - 0.58)
Emergency room visit <sup>‡</sup>	TMLE	0.78 (0.75 - 0.81)	0.80 (0.77 - 0.84)
	IPTW	0.79 (0.76 - 0.82)	0.80 (0.77 - 0.83)
Hospitalization <sup>‡</sup>	TMLE	0.70 (0.67 - 0.73)	0.74 (0.71 - 0.77)
	IPTW	0.69 (0.67 - 0.72)	0.72 (0.69 - 0.75)
Mechanical ventilation (Intubation or ventilation) <sup>‡</sup>	TMLE	1.01 (0.92 - 1.10)	0.99 (0.90 - 1.08)
	IPTW	1.02 (0.94 - 1.12)	0.97 (0.89 - 1.06)

\* Within 60 days after positive SARS-CoV-2 test, <sup>‡</sup> Within 14 days after a positive

SARS-CoV-2 test

Abbreviations: DPP-4i, dipeptidyl peptidase-4 inhibitor; GLP-1RA, glucagon-like peptide 1 receptor agonist; IPTW, inverse probability treatment weighted; OR, odds ratio; SGLT-2i, sodium glucose co-transporter 2 inhibitor; TMLE, targeted maximum likelihood estimation

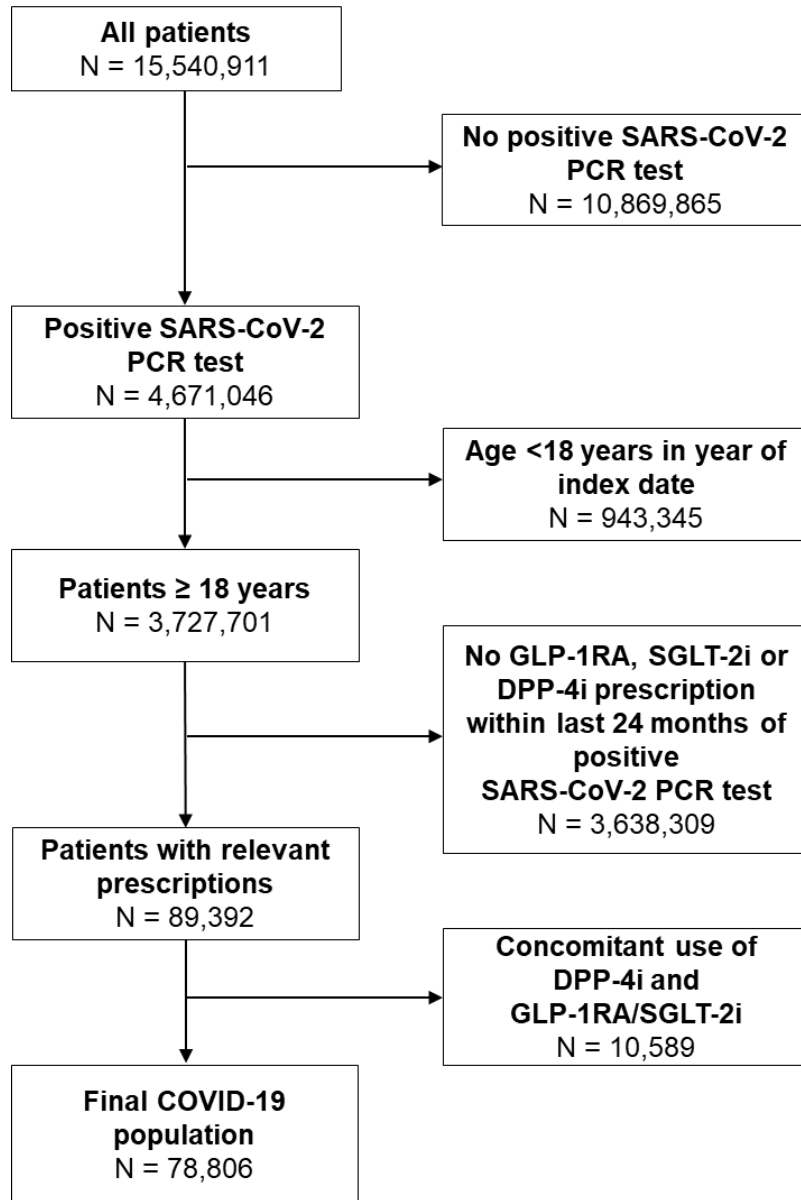
**Supplementary Table S5.** Crude primary and secondary outcomes, according to premorbid medication use of GLP-1RA mono, SGLT-2i mono, and GLP-1RA/ SGLT-2i.

<b>Outcome</b>	<b>GLP-1RA mono (N = 36,942)</b>	<b>SGLT-2i mono (N = 20,656)</b>	<b>GLP-1RA/ SGLT-2i (N = 11,594)</b>
60-day mortality* – E (%)	1,044 (2.83)	669 (3.24)	299 (2.58)
Emergency room visit <sup>‡</sup> – E (%)	10,040 (27.18)	6,054 (29.31)	3,193 (27.54)
Hospitalization <sup>‡</sup> – E (%)	7,029 (19.03)	4,777 (23.13)	2,258 (19.48)
Mechanical ventilation (Intubation or ventilation) <sup>‡</sup> – E (%)	1,393 (3.77)	884 (4.28)	447 (3.86)

\* Within 60 days after positive SARS-CoV-2 test, <sup>‡</sup> Within 14 days after a positive SARS-CoV-2 test; N: Total number of individuals; E: number of outcome events (first event only), %: proportion of individuals with the outcome

Abbreviations: DPP-4i, dipeptidyl peptidase-4 inhibitor; GLP-1RA, glucagon-like peptide 1 receptor agonist; SGLT-2i, sodium glucose co-transporter 2 inhibitor

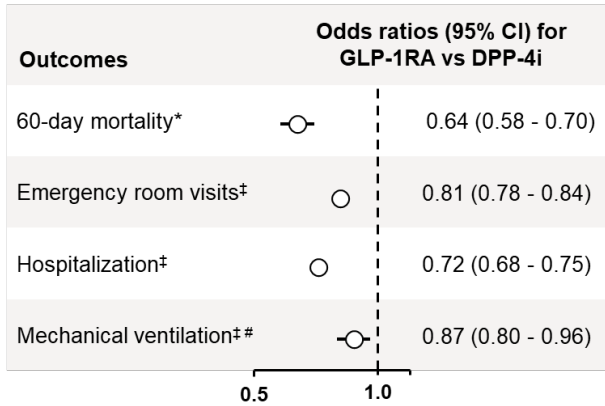
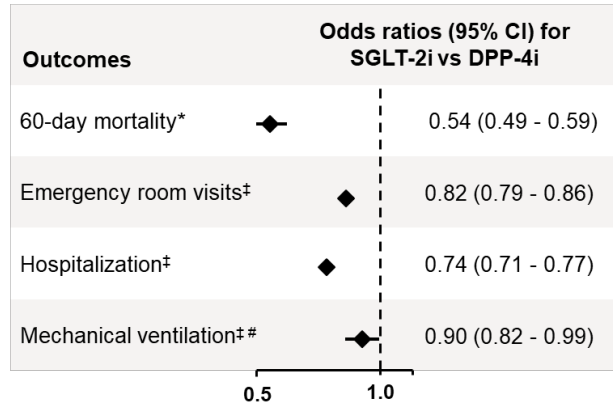
## FIGURES



### Supplementary Figure S1. Overview of study population

Abbreviations: COVID-19, coronavirus disease 2019; DPP-4i, dipeptidyl peptidase-4 inhibitor; GLP-1RA, glucagon-like peptide 1 receptor agonist; PCR, polymerase chain reaction; SARS-CoV-2, severe acute respiratory syndrome coronavirus 2; SGLT-2i, sodium glucose co-transporter 2

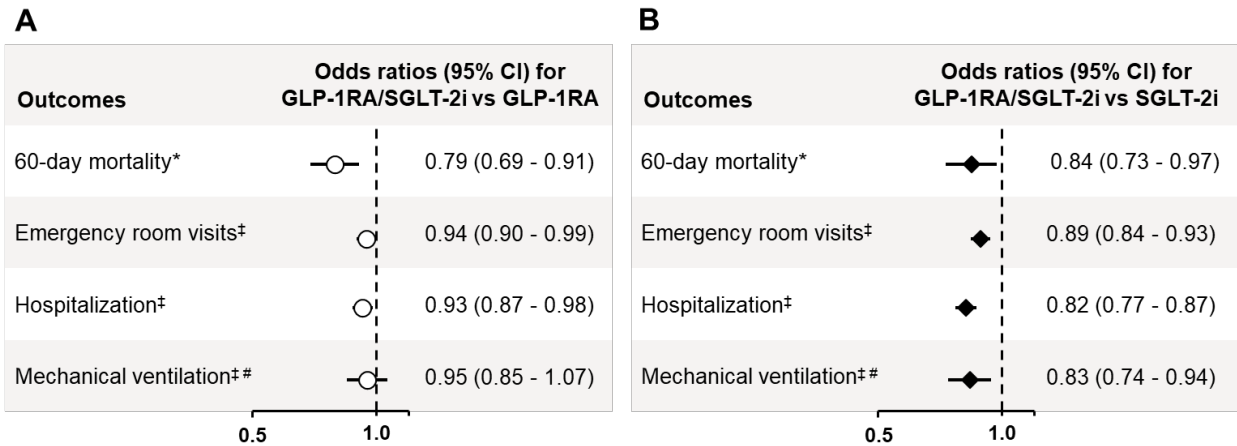


**A****B**

**Supplementary Figure S2.** Forest plot depicting IPTW-estimated ORs for primary and secondary outcomes for patients with a COVID-19 diagnosis and prescription for GLP-1RA (A) and SGLT-2i (B) use compared with DPP-4i use, respectively.

\* Within 60 days after positive SARS-CoV-2 test, ‡ Within 14 days after positive SARS-CoV-2 test, # Mechanical ventilation (intubation or ventilation)

Abbreviations: DPP-4i, dipeptidyl peptidase-4 inhibitor; GLP-1RA, glucagon-like peptide 1 receptor agonist; IPTW, inverse probability treatment weighted; OR, odds ratio; SGLT-2i, sodium glucose co-transporter 2 inhibitor



**Supplementary Figure S3.** Forest plot depicting IPTW-estimated ORs for primary and secondary outcomes for patients with a COVID-19 diagnosis and prescription for GLP-1RA and SGLT-2i combined use compared with GLP-1RA (A) and SGLT-2i (B) single use, respectively.

\* Within 60 days after positive SARS-CoV-2 test, <sup>‡</sup> Within 14 days after positive SARS-CoV-2 test, # Mechanical ventilation (intubation or ventilation)

Abbreviations: DPP-4i, dipeptidyl peptidase-4 inhibitor; GLP-1RA, glucagon-like peptide 1 receptor agonist; IPTW, inverse probability treatment weighted; OR, odds ratio; SGLT-2i, sodium glucose co-transporter 2 inhibitor