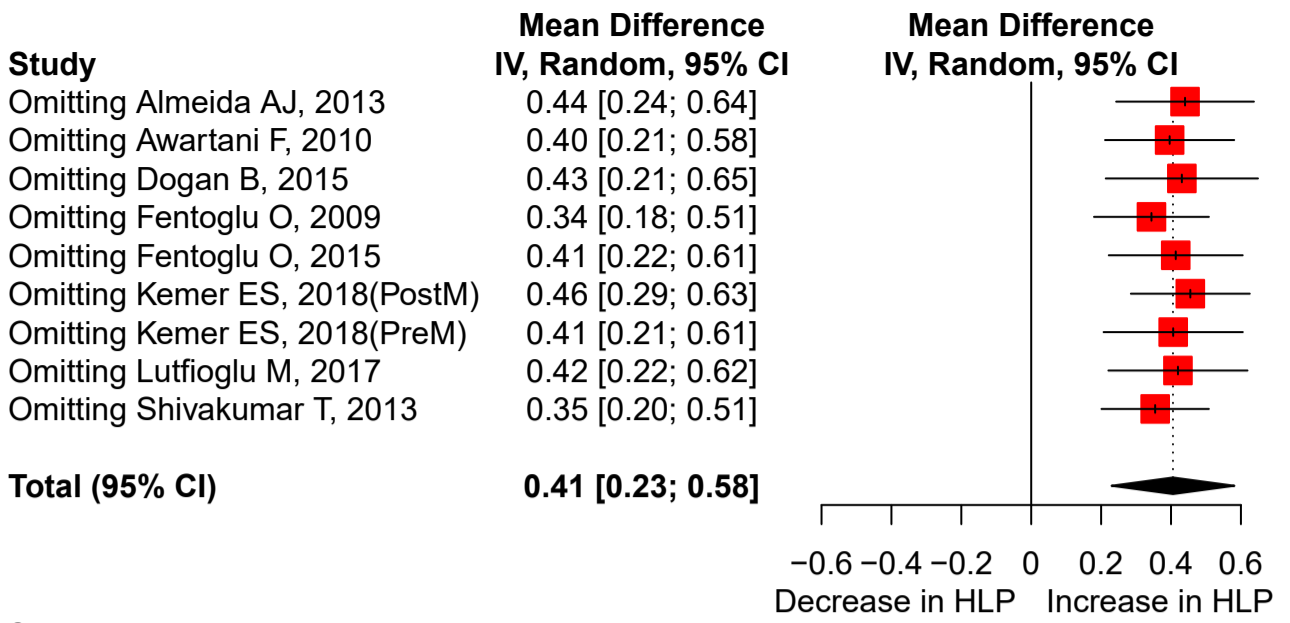
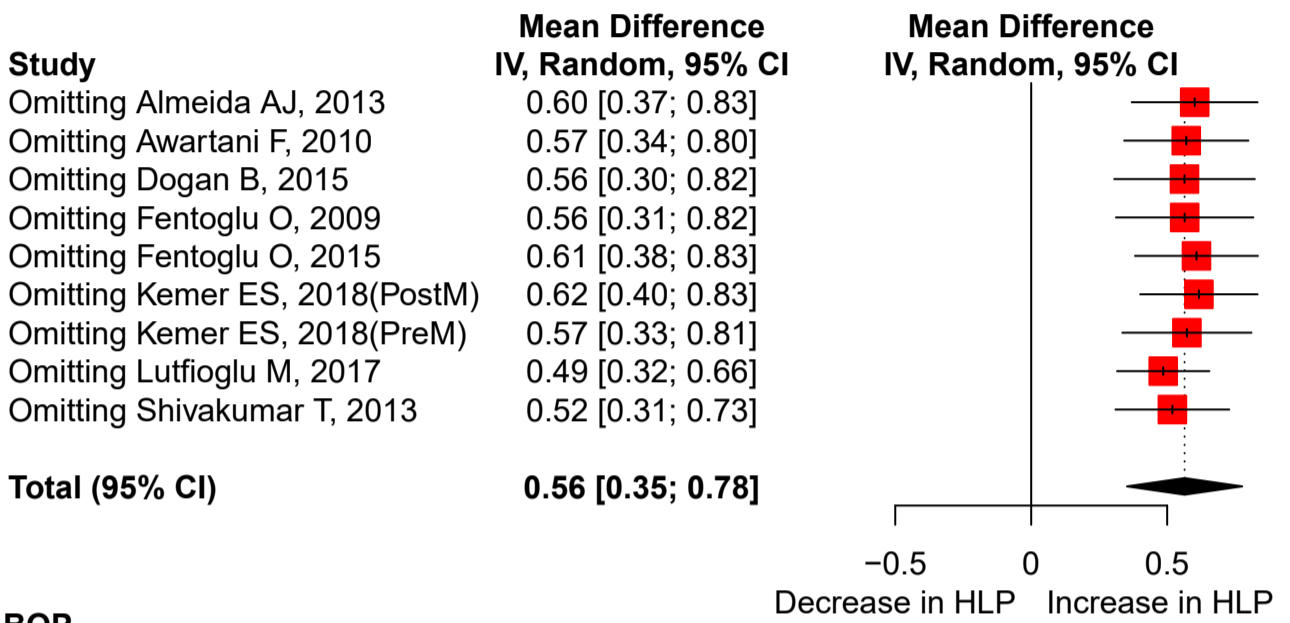
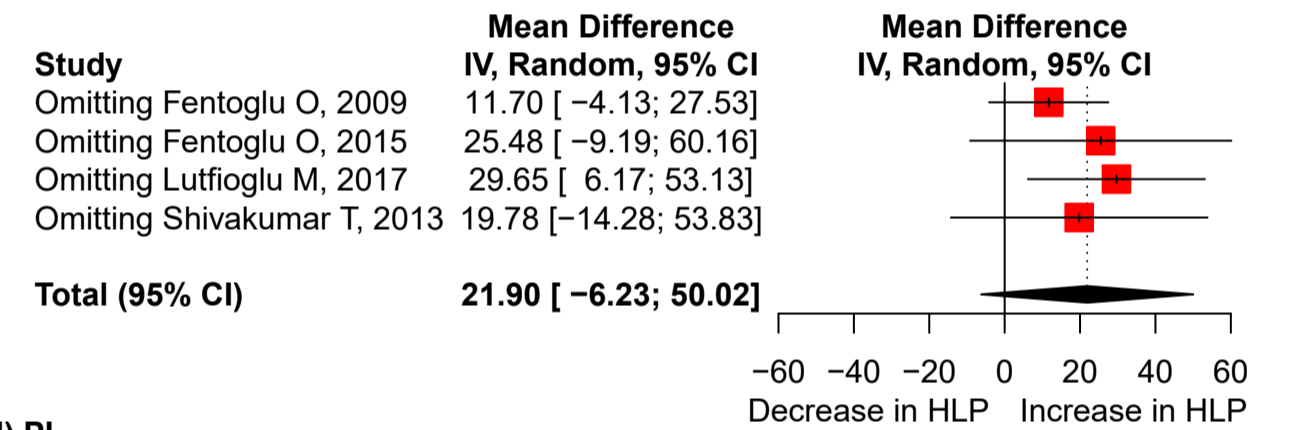
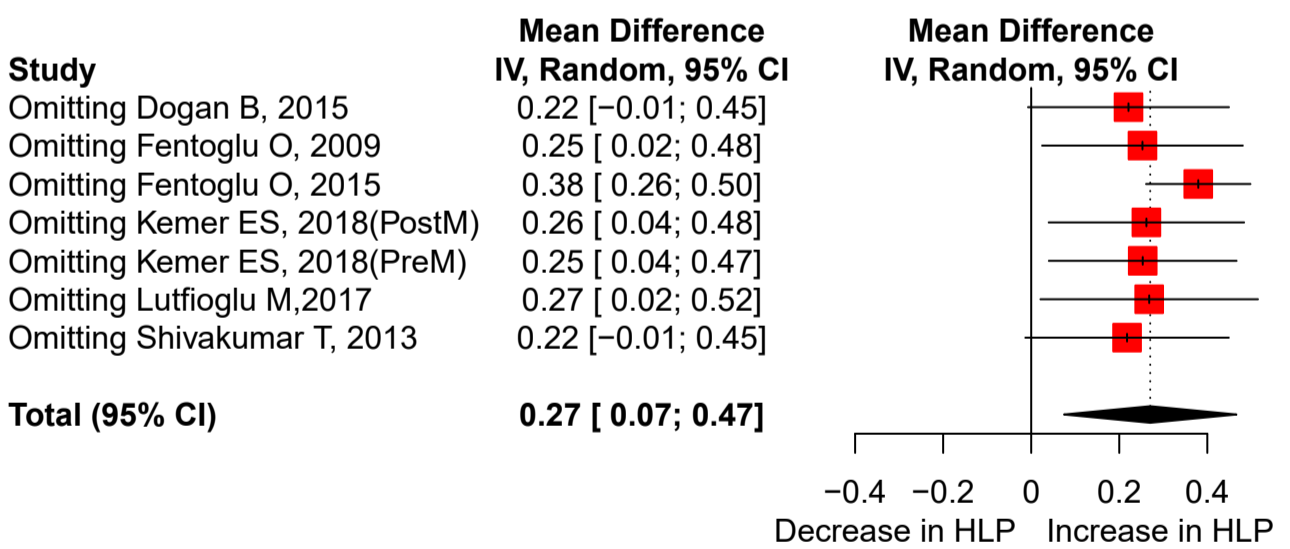
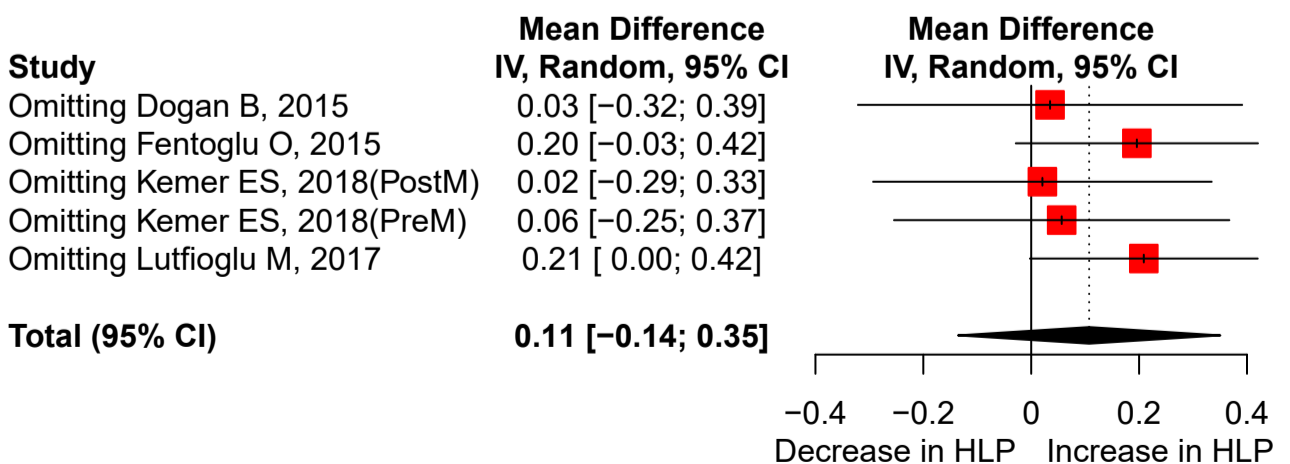


(a) PD**(b) CAL****(c) BOP****(d) PI****(e) GI**

Supplementary Figure 4. Sensitivity analysis of mean difference for comparisons: dyslipidemia versus non-dyslipidemia. (a) PD; (b) CAL (c) BOP; (d) PI; (e) GI. Sensitivity analyses were conducted using the leave-one-out method, which removes one study each time and repeats the analysis. The results were robust regardless if any one study was omitted. PD: probing depth, CAL: clinical attachment level, BOP: bleeding on probing, PI: plaque index, GI: gingival index