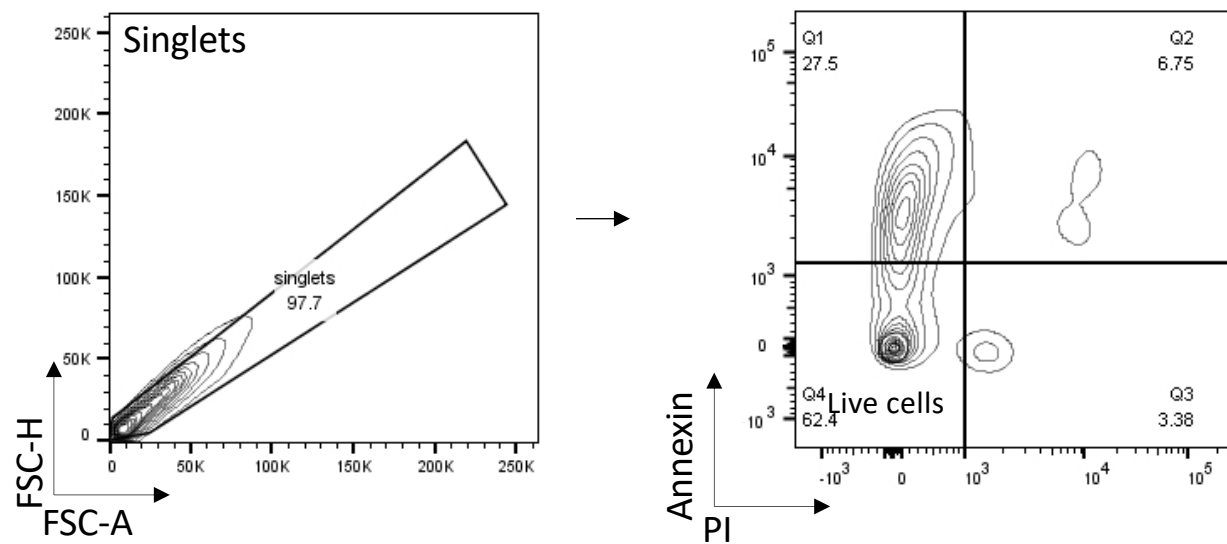
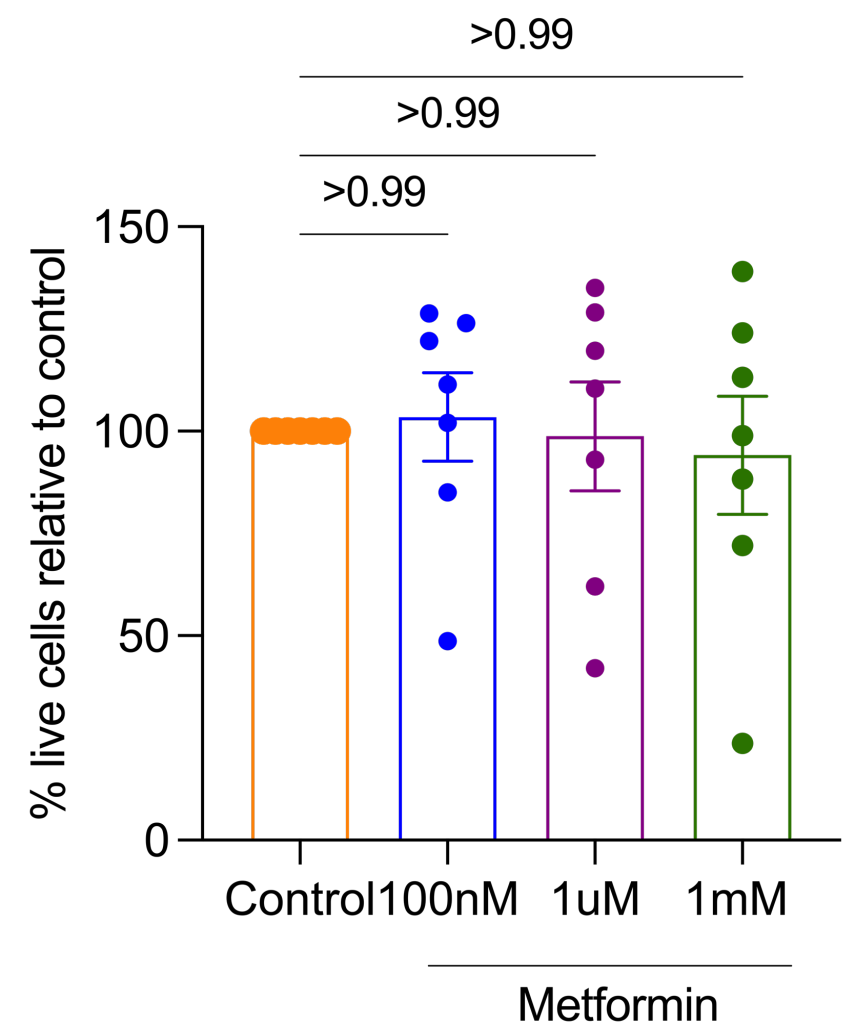


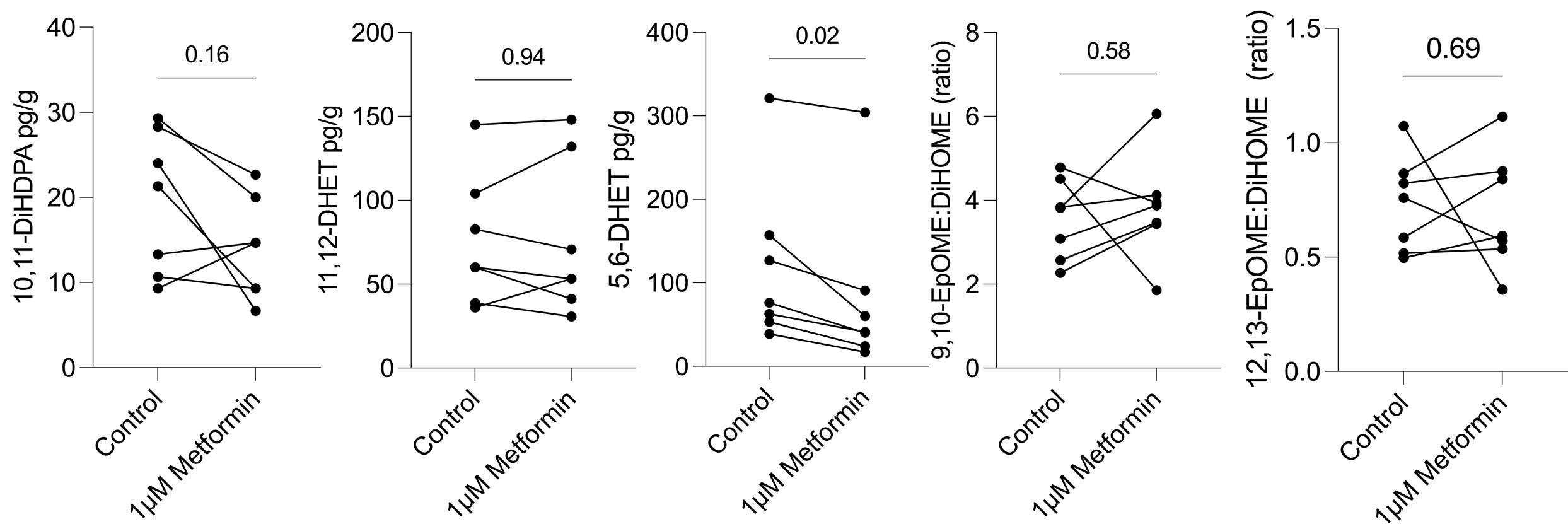
a



b



c



**Supplementary Figure 6. Ex vivo metformin effect on fatty acid diols and epoxide:diol in explants isolated from bariatric surgery patients.** (a) Gating strategy for quantifying number of viable cells (PI/Annexin staining) in the stromal vascular fraction (SVF) isolated from WAT explants (N=7). (b) Percentage SVF cell viability following incubation with Metformin (100nM, 1uM and 1mM; 48h) compared to control (100%). (c) 10,11-DiHDPA, 11,12-DHET, 5,6-DHET, 9,10-EpOME:DiHOME and 12,13-EpOME:DiHOME levels in explants treated with or without 1uM Metformin (N=7). Statistical significance measure by Kruskal-Wallis with Dunn's multiple comparison test (b) and Wilcoxon matched pairs signed rank test (c).