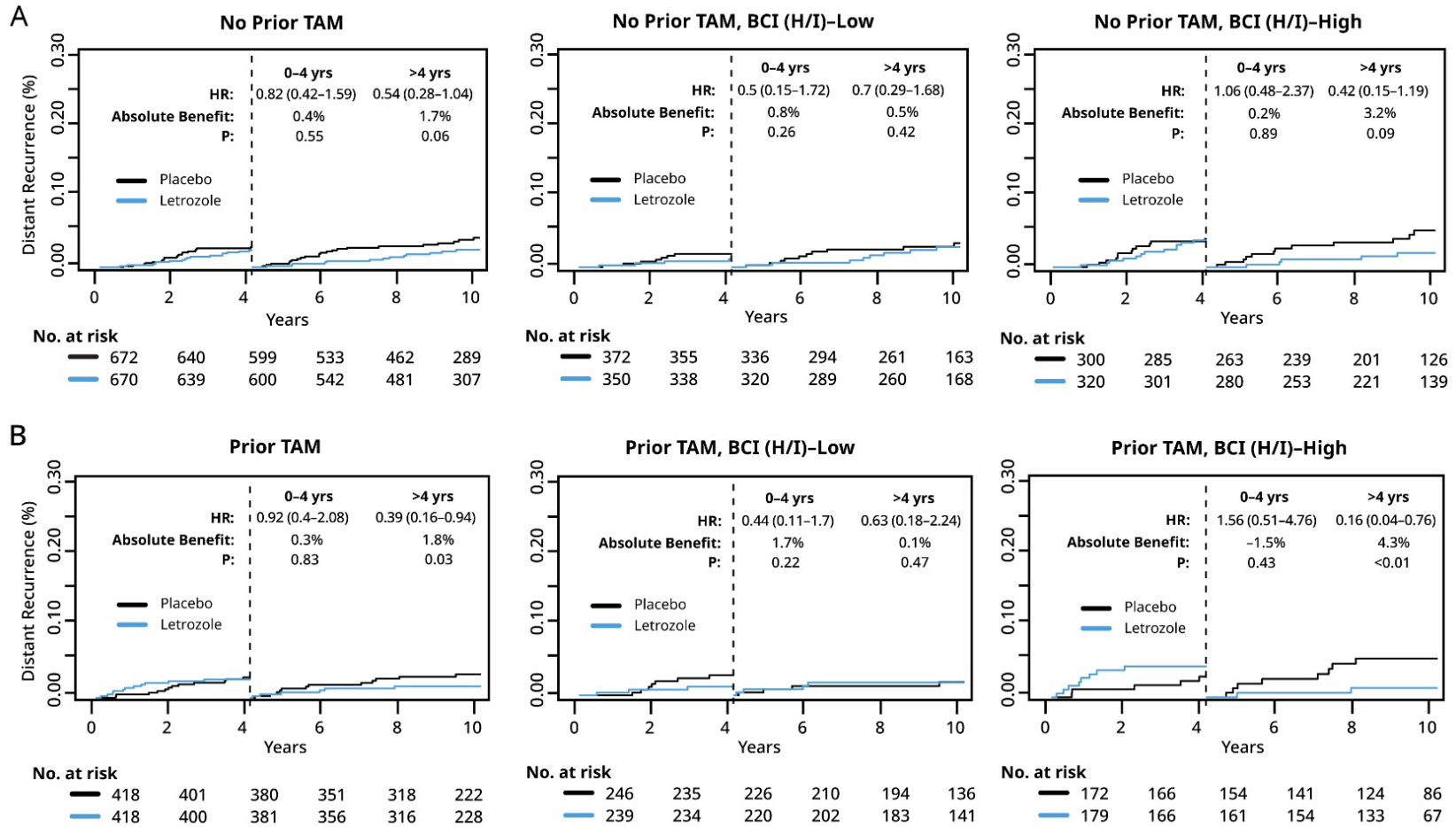


Mamounas, et al: Breast Cancer Index and Prediction of Benefit from Extended Aromatase Inhibitor Therapy in Hormone Receptor-Positive Breast Cancer: NRG Oncology/NSABP B-42

Supplementary Fig. S1.



Supplementary Fig. S1. Time-dependent Kaplan-Meier analysis based on Distant Recurrence comparing extended letrozole vs placebo in subsets of patients treated with initial adjuvant endocrine therapy with either **A**, AI only or **B**, a sequence of tamoxifen followed by AI in the overall Breast Cancer Index (BCI) NSABP B-42 translational cohort.