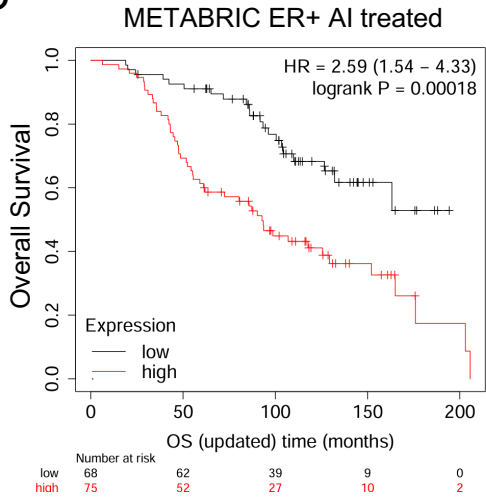


Supplementary Figure S27. Stratification of BC patients using the epigenetic dormancy signature

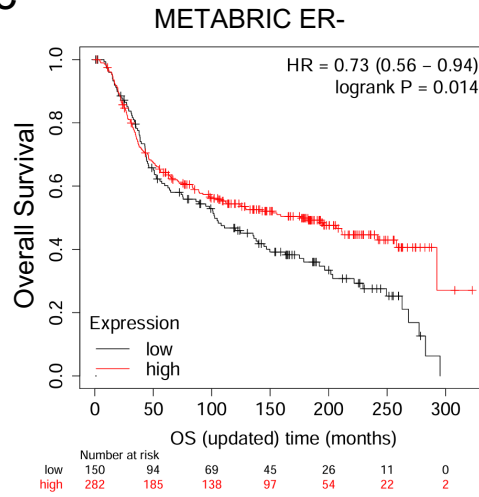
a

Genes included in the epigenetic dormant signature
EZH2
EHMT2 (G9A)
KMT5C (SUV420H2)

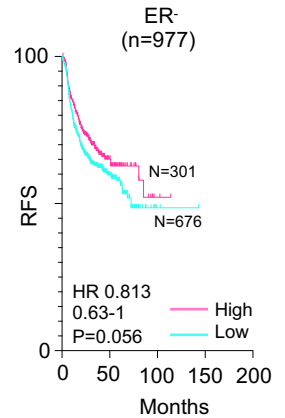
b



c



d



Supplementary Figure S27. Stratification of BC patients using the epigenetic dormancy signature. a) Genes included in the epigenetic dormancy signature **b)** Overall Survival (OS) curves for ER-positive (ER+) patients stratified based on the expression of the epigenetic dormancy signature (high vs low *G9a/EZH2/KMT5C* expression) **c)** Overall Survival (OS) curves for ER-negative (ER-) patients treated with Aromatase Inhibitors (AI) stratified based on the expression of the epigenetic dormancy signature **d)** Relapse free survival (RFS) curves for ER-negative (ER-) patients stratified based on the expression of the epigenetic dormancy signature.