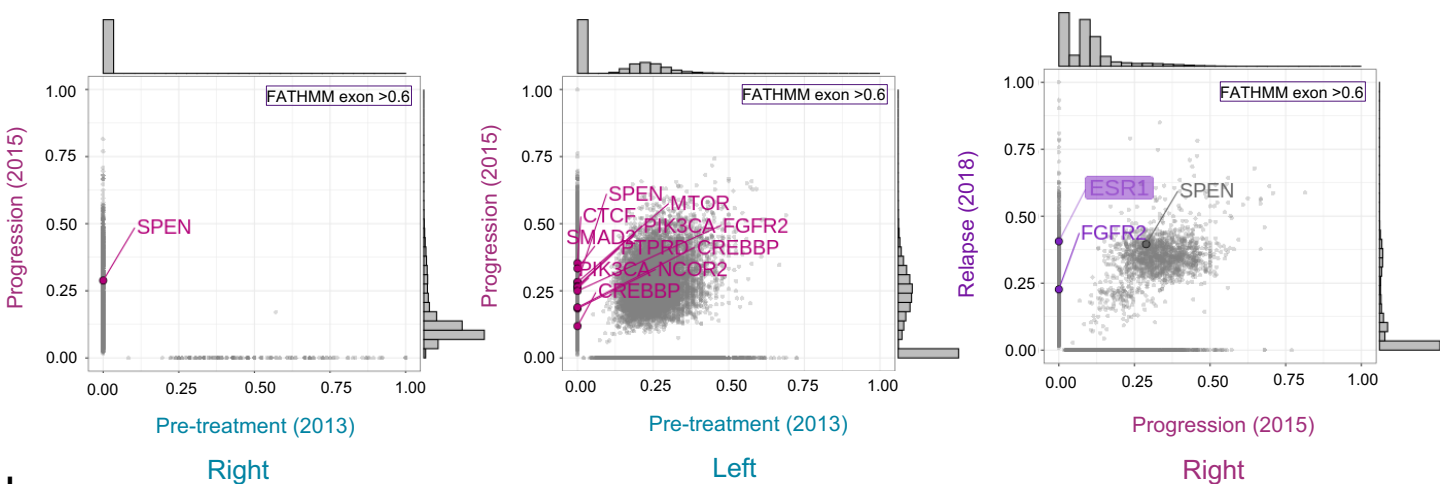


# Supplementary Figure S3. Genomic profiling of patients

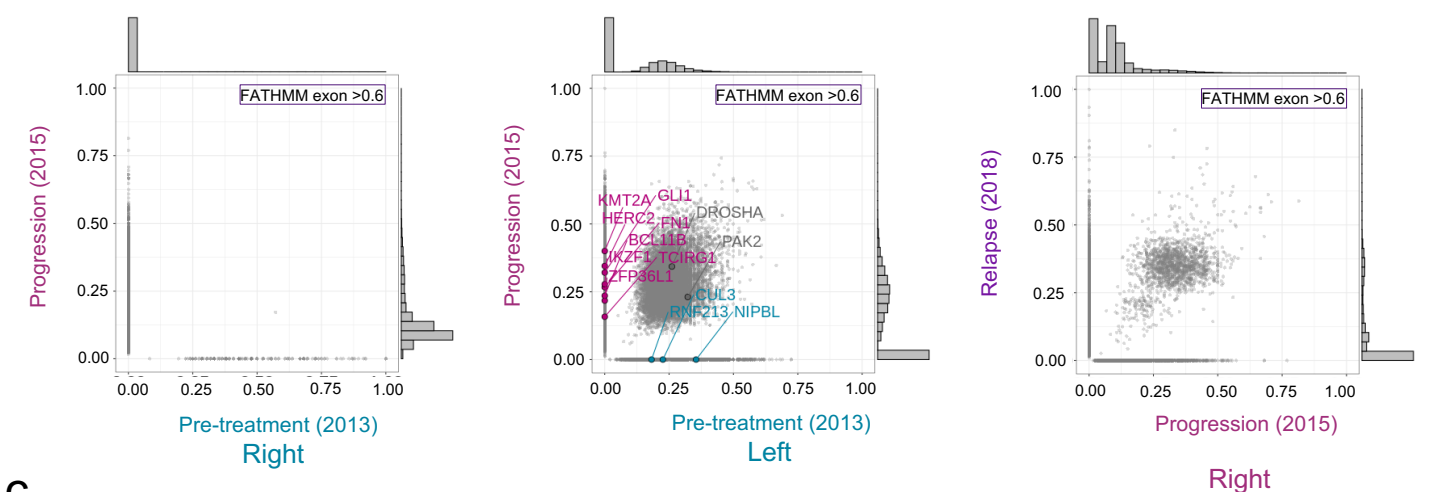
**a** Patient 1

*Bona fide* Breast cancer drivers + ER+ BC ET resistance drivers



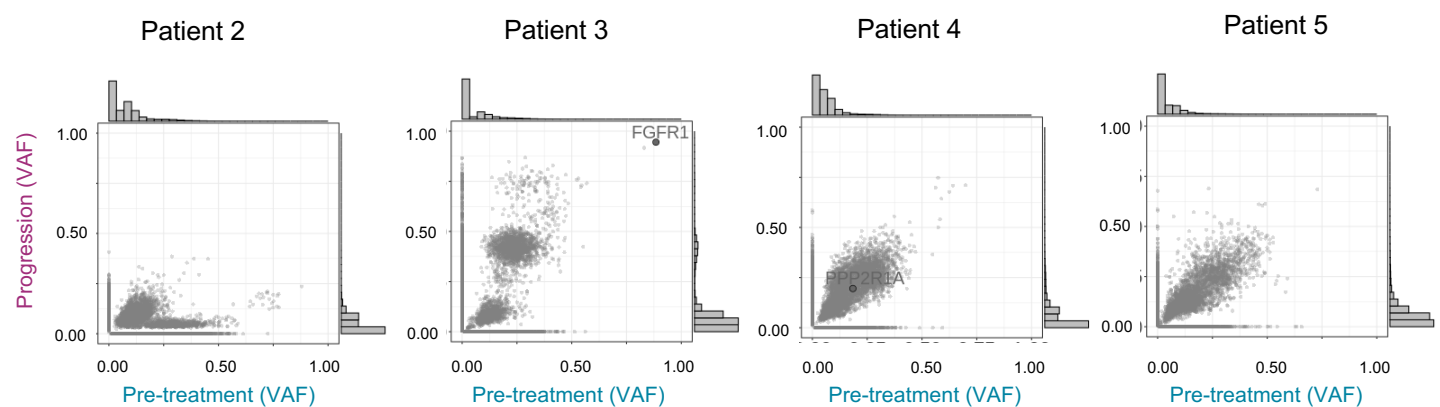
**b** Patient 1

*Bona fide* pan-cancer drivers (exc. breast cancer)



**c**

*Bona fide* pan-cancer drivers (exc. breast cancer)



**Supplementary Figure S3. Genomic profiling of patients.** Variant Allele Frequency plots from WGS for *bona fide* breast cancer drivers and ER+ BC ET resistance drivers for patient 1 (**a**), known pan-cancer drivers other than breast cancer for patient 1 (**b**) and patients 2-5 (**c**). Variants are labelled and highlighted according to detection in pre-treatment (teal), progression (magenta), relapse (purple) or both (grey). Labeled genes passed FATHMM significant score >0.6 (predicted damaging). *Bona fide* breast cancer drivers (Intogen) and ER+ BC ET resistance drivers (Bertucci *et al.*) are highlighted and boxed respectively.