

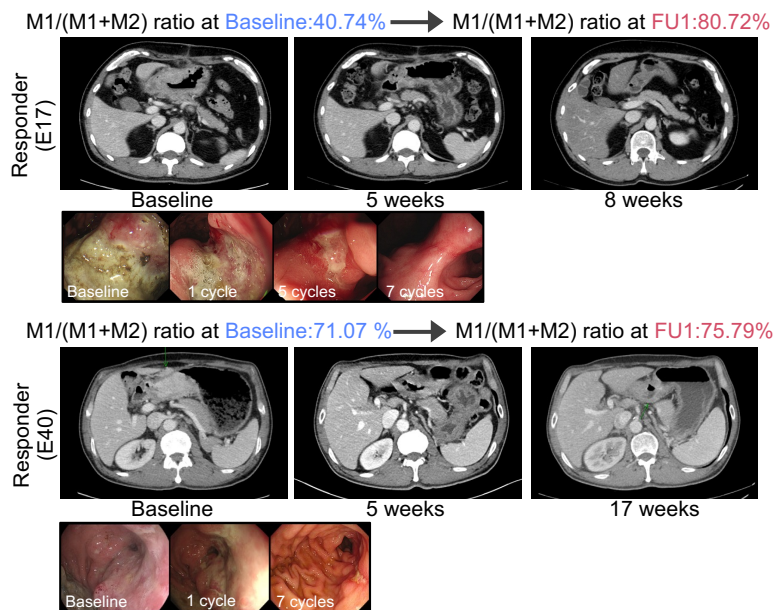
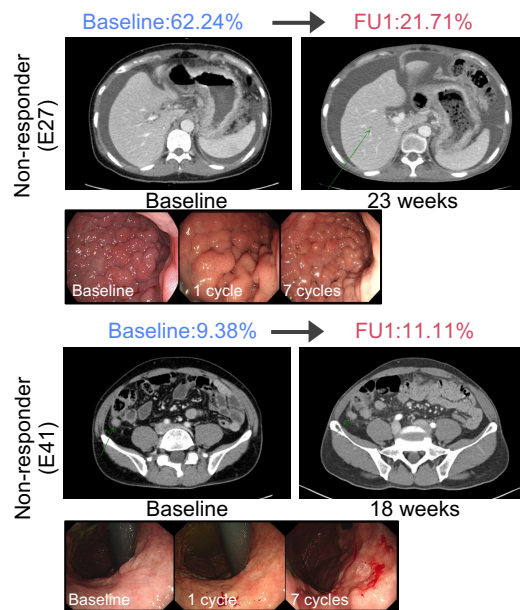
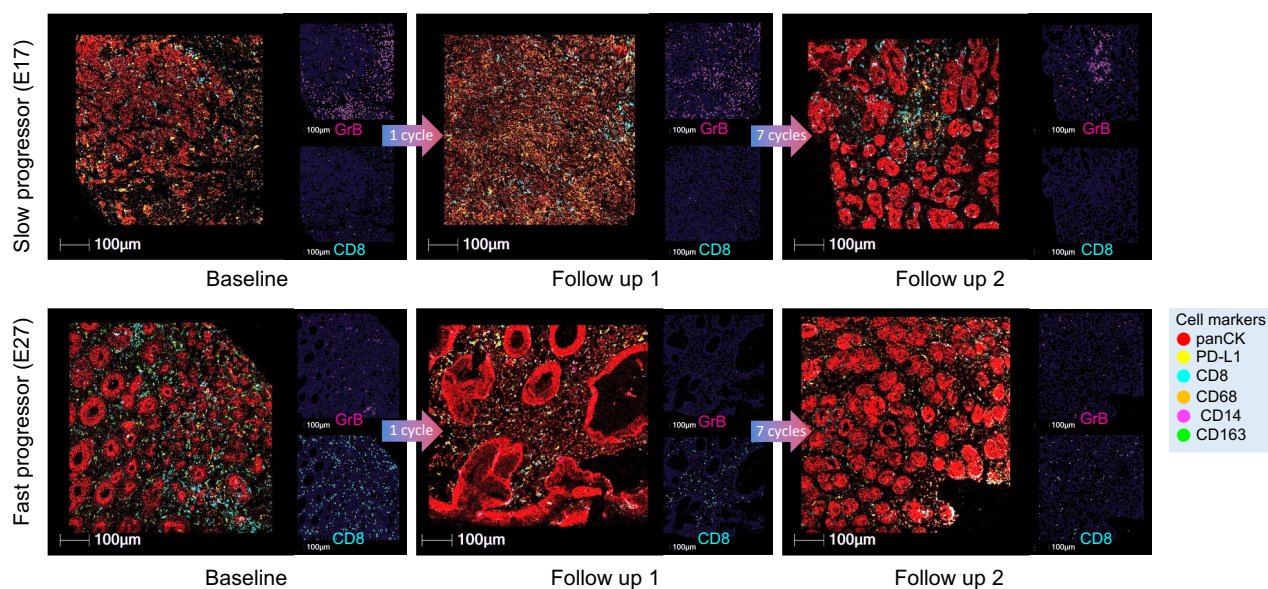
A**B****C**

Figure S20. (A) CT imaging of tumor burden in a pair of patients classified as either a responder with increased relative M1 ratio or non-responder with unchanged relative M1 ratio. (B) CT scans of a second pair of patients as in (A). (C) Multiplexed immunofluorescence (mIF) images of BL, FU1 and FU2 samples from two patients, E17 (slow progressor) and E35 (fast progressor), staining for panCK, PD-L1, CD163, CD68, CD14 and CD8.