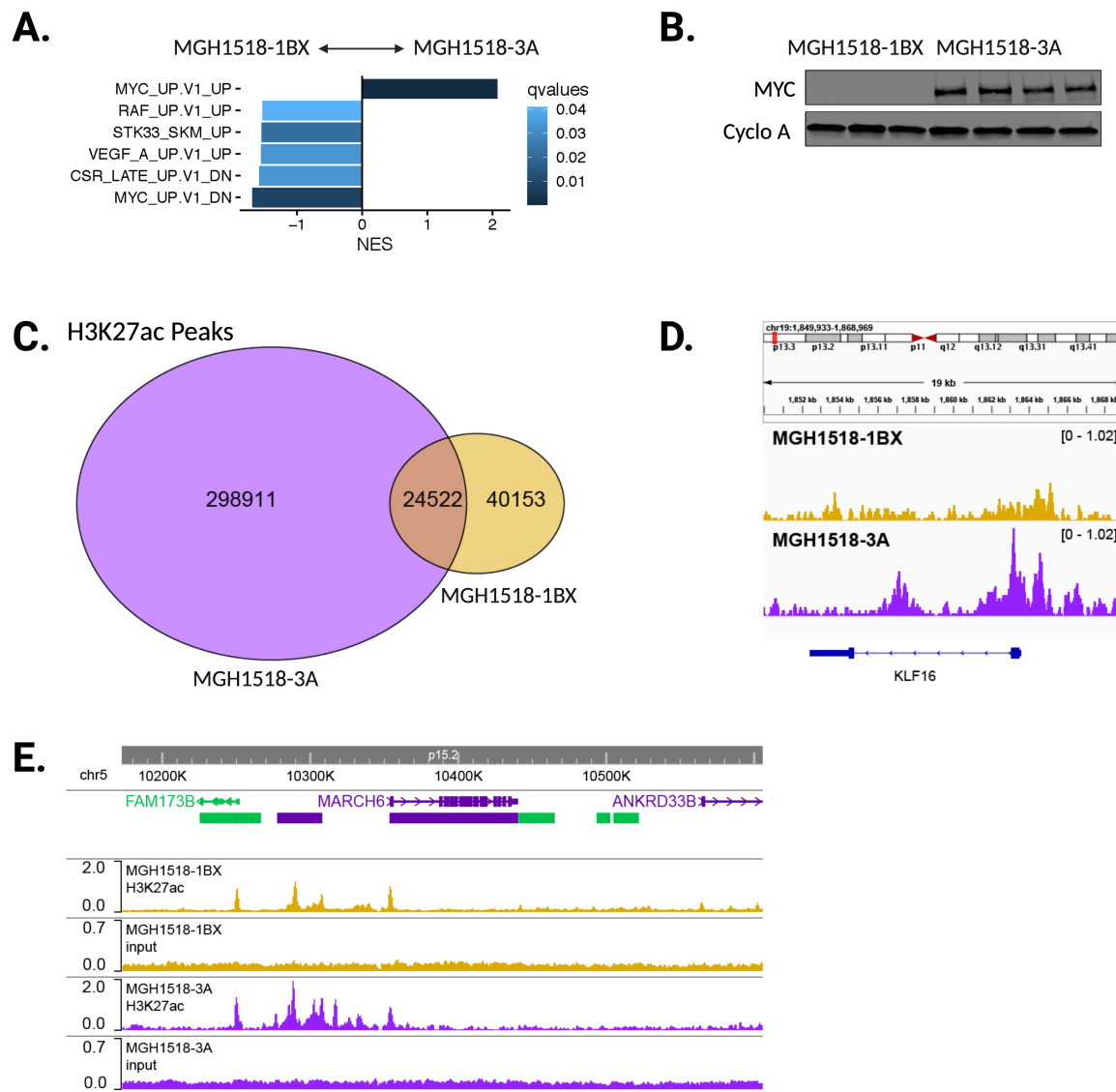


# Supplementary Figure S2



**Supplementary Figure S2. Comparison gene expression and H3K27ac between MGH1518 serial models.** (A) Gene set enrichment analysis of differentially expressed genes in MGH1518-3A vs. MGH1518-1BX. (B) MYC protein levels in replicate xenografts of MGH1518-1BX and MGH1518-3A. (C) Venn diagram depicting overlap of H3K27ac peaks between MGH1518-1BX and MGH1518-3A. (D) Increase in H3K27ac peaks in the *KLF16* locus in MGH1518-3A. Peak heights = counts per million mapped reads (CPM). (E) ChIP-seq control region on chromosome 5 that show minimal variation in normalized input and H3K27ac peaks between models. Peak heights = counts per million mapped reads (CPM). (created with BioRender.com)