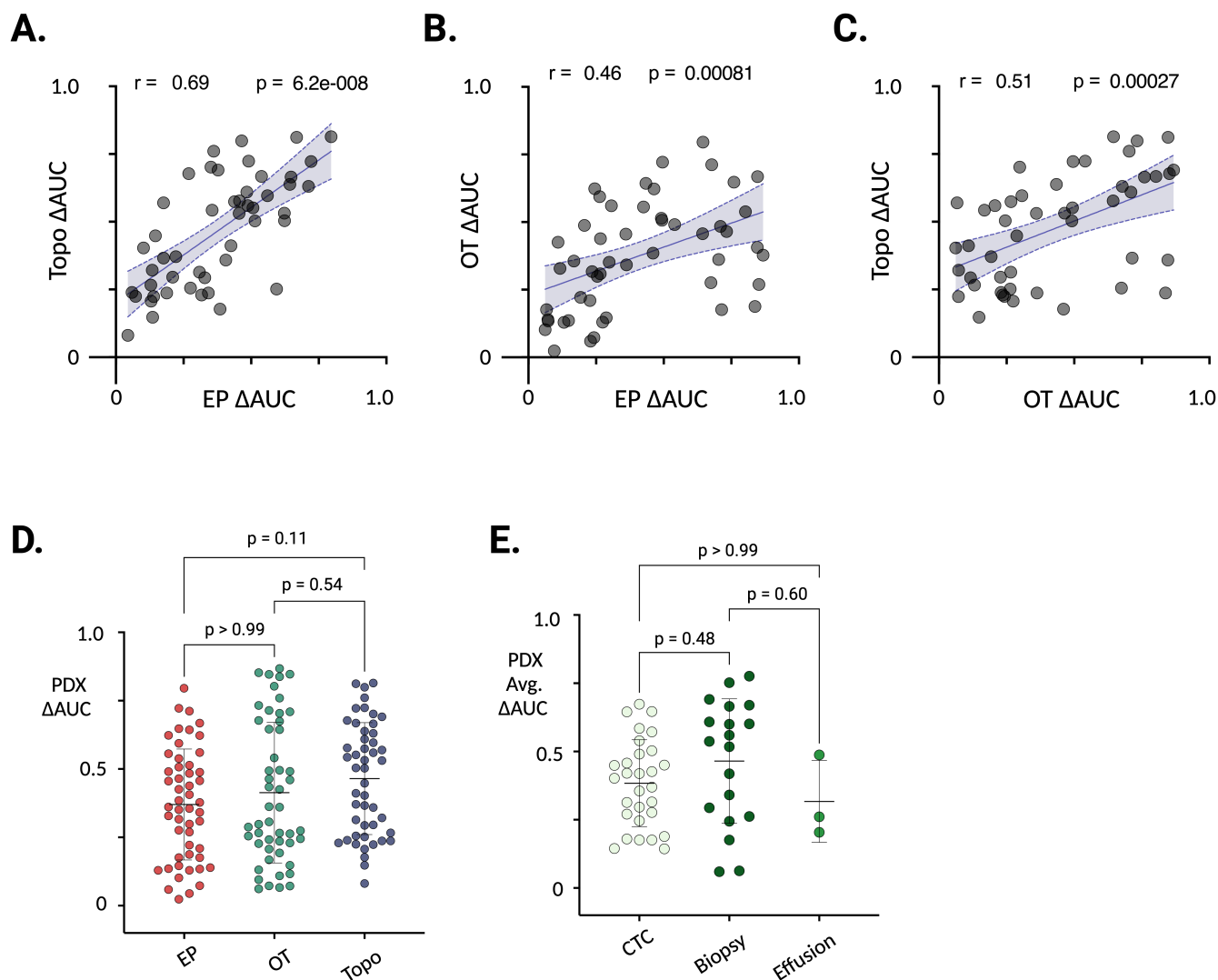


Supplementary Figure S8



Supplementary Figure S8. Comparison of chemotherapy regimen delta-AUC and comparison of average delta-AUC by PDX source. (A-C) For each PDX model, pairwise comparison of Δ AUC for each regimen. Topotecan (Topo) vs. EP (**A**), OT vs. EP (**B**), and Topo vs. OT (**C**). r = Pearson correlation, and p = probability that correlation is significant. Solid line = linear regression, dashed = 95% CI of regression. (**D**) Comparison of Δ AUC measurement distributions for PDX models treated with EP, OT and topotecan. Kruskal-Wallis test to determine probability that differences in the three distributions could be due to random sampling. (**E**) Δ AUC^{avg} of PDX models derived from CTCs vs. biopsies vs. effusion specimens. Mann-Whitney test p -values for CTC-derived vs. biopsy-derived models; effusion-derived models too few for meaningful comparison. (created with BioRender.com)