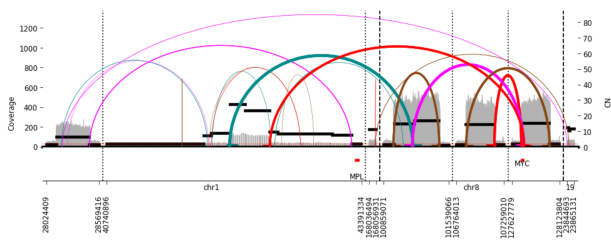


Supplementary Figure S9

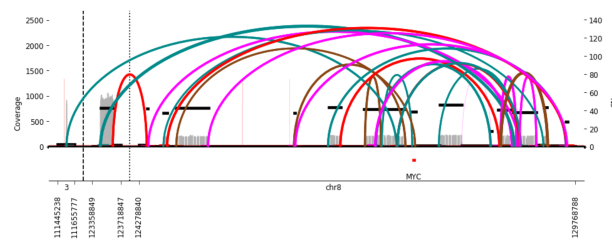
MYC family ecDNAs

A.

MGH1564-1A *MYC* ecDNA amplicon

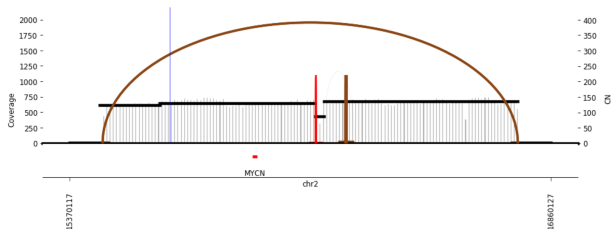


MGH1518-3A *MYC* ecDNA amplicon

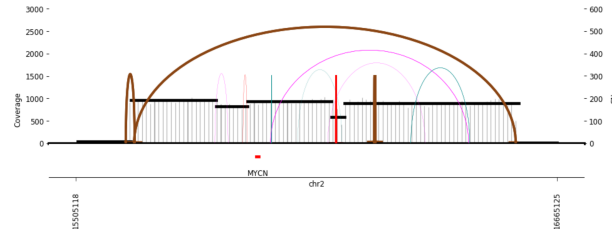


B.

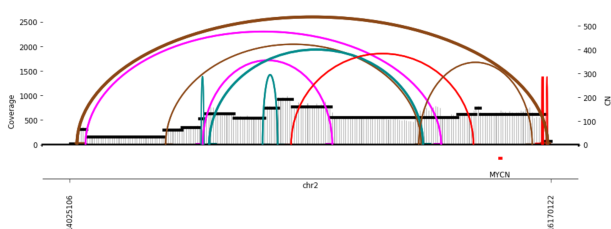
MGH1578-3B *MYCN* ecDNA amplicon



MGH1505-1A *MYCN* ecDNA amplicon



MGH1719-1A *MYCN* ecDNA amplicon

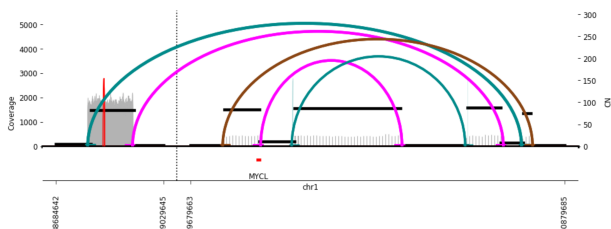


Breakpoint Orientation

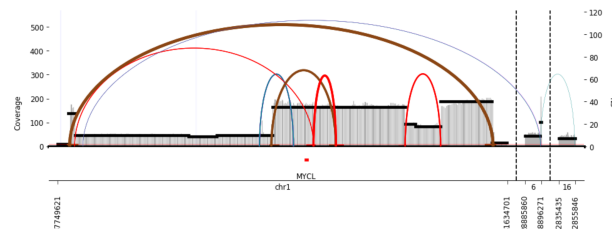
- Forward-Reverse
- Reverse-Forward
- Forward-Forward
- Reverse-Reverse

C.

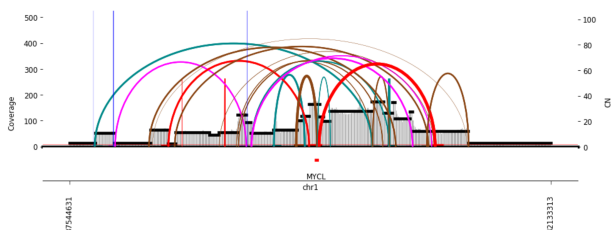
MGH1505-2A *MYCL* ecDNA amplicon



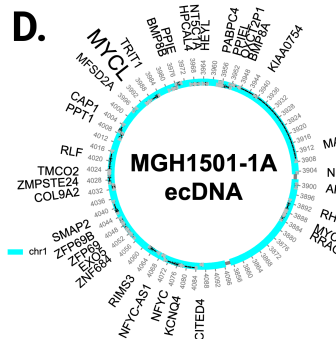
MGH1546-2A *MYCL* ecDNA amplicon



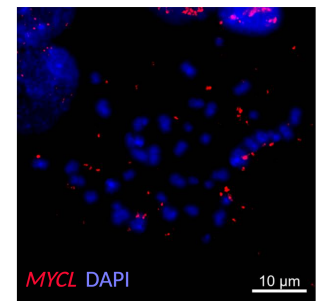
MGH1501-1A *MYCL* ecDNA amplicon



D.



E.



Supplementary Figure S9. Reconstruction of ecDNAs containing *MYC* paralogs and *MYCL* FISH in MGH1501-1A metaphase chromosomes. (A-C) AmpliconArchitect reconstruction of the rearrangements that formed ecDNAs harboring *MYC* (A) or paralogs *MYCN* (B) or *MYCL* (C) in the PDX panel. (D) Consensus circular map of ec*MYCL* in MGH1501-1A. (E) FISH of probes for *MYCL* in metaphase cells from MGH1501-1A. (created with BioRender.com)