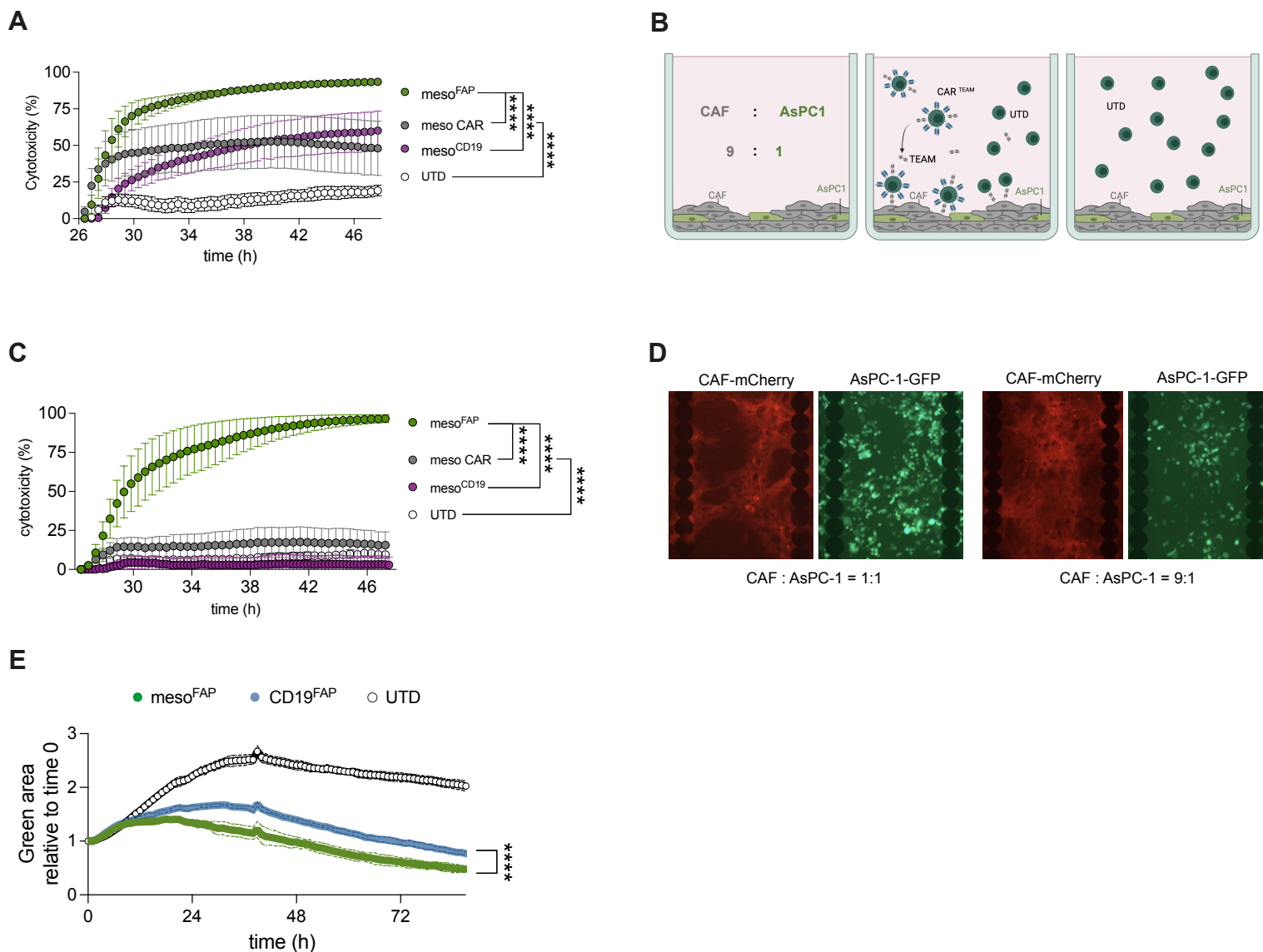


Supplementary Figure S2



Suppl. Fig. S2. In vitro setup of CARTEAM to CAF:AsPC-1 with different ratios showing superiority of mesoFAP compared to CARs targeting mesothelin only. A. Real-time cytotoxicity assay in a co-culture system containing the following ratio of 1 T-cell: 1 CAF : 1 PDAC. **B.** Schematic of co-culture system containing CAFs and AsPC-1 in a 9:1 ratio respectively (E:T = 1:5; created with BioRender.com). **C.** Real-time cytotoxicity assay in a co-culture system (CAF and AsPC-1 in 9:1 ratio) treated with meso^{FAP} CAR T-cells including controls. **D.** Representative fluorescent microscopy image of mCherry-labelled CAF-1 and GFP-labelled AsPC-1 cells after 40 hours of co-incubation at a 1:1 ratio (left) and 9:1 ratio (right), 10x magnification is shown. **E.** Quantification of IncuCyte cytotoxicity assay of PDAC (AsPC-1 cells GFP labeled) in a co-culture system (CAF and AsPC-1 in 9:1 ratio) treated with meso^{FAP} CAR T-cells including controls. Means are plotted +/- SEM, ****<0.0001 by one-way ANOVA.