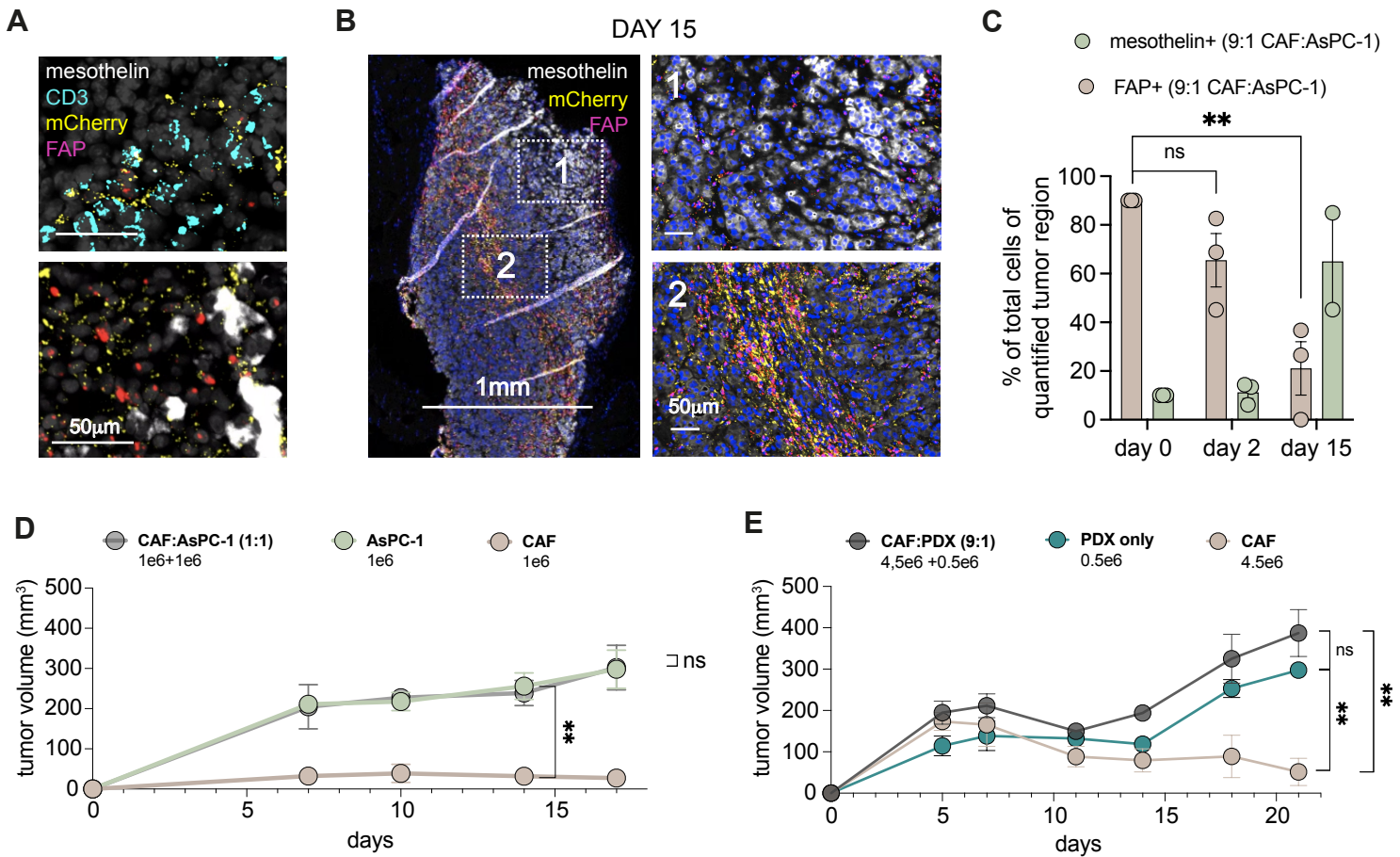


Supplementary Figure S6



Suppl. Fig. 6. Human CAF-1 cells do not expand in vivo in NSG mice in the presence or absence of AsPC-1 or PDX1294 cells. **A.** Representative images on day 6 post meso^{FAP} injection showing mCherry and FAP or mCherry and CD3 positive cells but no double positive cells for CD3 and FAP. **B-C.** NSG mice were injected with CAFs and AsPC-1 (9:1 ratio) or 1197 CAFs and PDX1294 (9:1 ratio) subcutaneously into the flank. **B.** Representative multiplex ISH IF images of day 15 after tumor injection. **C.** Quantification of FAP- and mesothelin-expressing cells over time. **D.** Average tumor volumes as measured by caliper from AsPC-1 cells mixed with CAF-1 cells (1:1 ratio), CAF-1 cells alone, and AsPC-1 cells alone injected subcutaneously into the flank of NSG mice. **E.** PDX 1294 cells and CAF-1 cells (1:9 ratio), CAF-1 cells alone, and PDX 1294 cells alone injected subcutaneously into the flank of NSG mice. Data represent mean \pm SEM. Stars indicate significance as determined by unpaired two-tailed t-tests of biological triplicates. ** $p < 0.01$, *** $p < 0.0001$. ns: not significant (panels C, I, J) Measurements as average tumor volume values (mean \pm SEM, $n = 3-5$, 2-way ANOVA, * $p < 0.05$; ** $p < 0.01$; *** $p < 0.001$; ns = not significant; panels D, E, L). meso: mesothelin, IF: immunofluorescence, IHC: immunohistochemistry