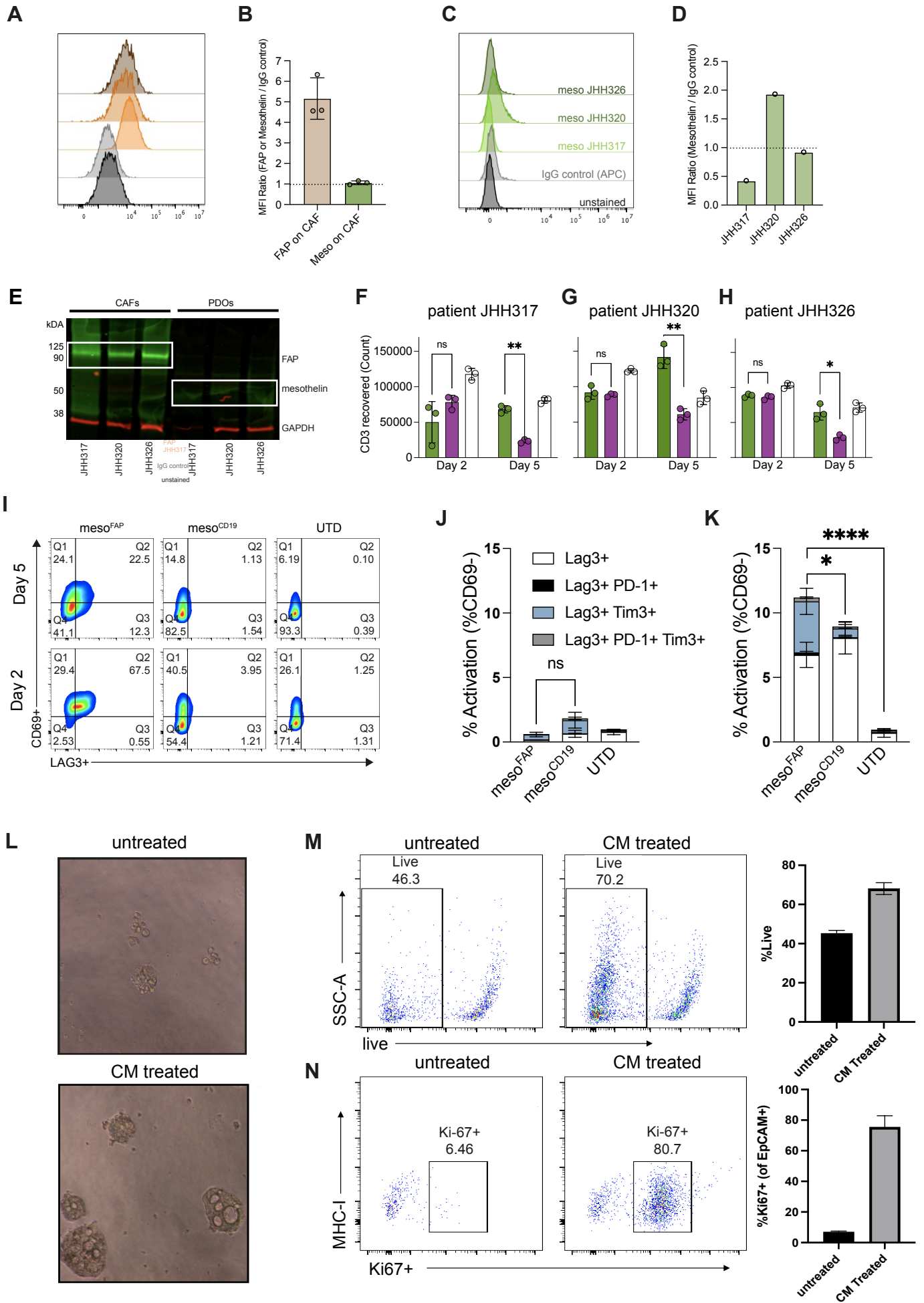


# Supplementary Figure S8



**Suppl. Fig. S8. Target expression and individual analysis of patient-derived organoids (PDO) with matching CAFs.** **A.** Flow cytometric histogram of FAP expression on patient-derived CAFs. **B.** quantification of FAP expression on CAFs by bar graph. **C.** Flow cytometric histogram of mesothelin surface expression on patient-derived CAFs. **D.** quantification of FAP expression on CAFs by bar graph. **E.** Western blot of FAP and mesothelin protein on PDO and CAFs. **F-H.** Individual CD3+ cell recovery in co-culture of individual patients JHH317, JHH320, and JHH326. **I.** Representative flow cytometric dot plots showing CD69+ and Lag3+ expression on CD3+ CART-cells at day 2 and day 5, JHH317 co-culture images shown. **J-K.** Percentage of quadruple negative cells (CD69-, Lag3-, Tim3-, and PD-1-) at day 2 (J) and day 5 (K). **L.** Brightfield imaging at 10x magnification demonstrating PDOs grown for 14 days in standard organoid media (untreated) or CAF-conditioned media (CM). **M.** (Left) Flow plot of PDO viability following days of culture in standard organoid media or CAF-conditioned media. Box denotes live cell population. (Right) Bar graph demonstrating viability difference in PDOs grown in standard organoid media (untreated) or CAF conditioned media (CM) **N.** (Left) Flow plot of Ki67+ PDOs after culture in standard organoid media (untreated) or CAF conditioned media (CM). (Right) Bar graph of %Ki67+ PDOs after culture in standard organoid media (untreated) or CAF-conditioned media (CM). Measurements as means plotted with technical triplicate; 2-way ANOVA, \*P < 0.05, \*\* P < 0.005, \*\*\*P < 0.0001(F-H). 2-way ANOVA test, \*\*P = 0.0012, \*\*\*\*P < 0.0001(J-K).