

## SUPPLEMENTAL FILE

**Title:** Prevalence and characteristics of healthcare utilization with different providers among Canadians with chronic back problems: A population-based study

**Authors:** Jessica J. Wong, DC, PhD; Dan Wang, PhD; Sheilah Hogg-Johnson, PhD; Silvano A. Mior, DC, PhD; Pierre Côté, DC, PhD

**Corresponding author:** Jessica J. Wong, DC, PhD, Institute for Disability and Rehabilitation Research, Ontario Tech University, 2000 Simcoe Street North, Oshawa, Ontario L1H 7K4, Canada; email: [jessica.wong@ontariotechu.ca](mailto:jessica.wong@ontariotechu.ca)

### Contents:

- **Appendix A1.** Questions from the Canadian Community Health Survey (CCHS) used to define covariates (sociodemographic, health-related and behavioural characteristics)
- **Appendix A2.** Flow diagram for study sample of Canadian Community Health Survey (CCHS) respondents from 2001 to 2010
- **Appendix A3.** Flow diagram for study sample Canadian Community Health Survey (CCHS) respondents from 2015/2016
- **Appendix A4.** Prevalence of consultations with health care professionals among Canadians with chronic back problems: Pooled analysis of CCHS 2001-2010
- **Appendix A5.** Prevalence of having received regular health care from different health professionals among Canadians with chronic back problems: CCHS 2015-2016

**Appendix A1.** Questions from the Canadian Community Health Survey (CCHS) used to define covariates (sociodemographic, health-related and behavioural characteristics)<sup>1-6</sup>

Variable	CCHS Question/Derived variable	Response	Regrouping
<b>Age*</b>	This derived variable has been grouped as a form of disclosure control. - Sourced survey question: <i>“What is your age?”</i>	0-121 years	1 12-19 2 20-34 3 35-49 4 50-64 5 65-79 6 80+
<b>Sex</b>	<i>“Is respondent male or female?”</i>	1 Male 2 Female	/
<b>Province/territory of residence</b>	Administration information based on sample allocation	1 Newfoundland and Labrador 2 Prince Edward Island 3 Nova Scotia 4 New Brunswick 5 Quebec 6 Ontario 7 Manitoba 8 Saskatchewan 9 Alberta 10 British Columbia 11 Yukon/Northwest territories/Nunavut	/
<b>Cultural/racial background*</b> (CCHS 2001-2010)	This derived variable indicates the cultural or racial origin of the respondent. - Sourced survey question: <i>“People living in Canada come from many different cultural and racial backgrounds. Are you...?”</i>	1 ...White 2 ...Chinese 3 ...South Asian (e.g., East Indian, Pakistani, Sri Lankan, etc.) 4 ...Black 5 ...Filipino 6 ...Latin American	1 White 2 Non-white (Aboriginal or Other Visible Minority)

		<ul style="list-style-type: none"> <li>7 ...Southeast Asian (e.g., Cambodian, Indonesian, Laotian, Vietnamese, etc.)</li> <li>8 ...Arab</li> <li>9 ...West Asian (e.g., Afghan, Iranian, etc.)</li> <li>10 ...Japanese</li> <li>11 ...Korean</li> <li>12 ...Aboriginal Peoples of North America (North American Indian, Métis, Inuit / Eskimo)</li> <li>13 ... Other</li> </ul>	
<b>Cultural/racial background*</b> (CCHS 2015-2018)	<p>This derived variable indicates the cultural or racial background of the respondent.</p> <p>- Sourced survey question:</p> <p>a) <i>“you may belong to one or more racial or cultural groups on the following list. Are you...?”</i></p>	<ul style="list-style-type: none"> <li>1 ...White</li> <li>2 ...South Asian (e.g., East Indian, Pakistani, Sri Lankan, etc.)</li> <li>3 ...Chinese</li> <li>4 ...Black</li> <li>5 ...Filipino</li> <li>6 ...Latin American</li> <li>7 ...Arab</li> <li>8 ...Southeast Asian (e.g., Cambodian, Malaysian, Laotian, Vietnamese, etc.)</li> <li>9 ...West Asian (e.g., Afghan, Iranian, etc.)</li> <li>10 ...Korean</li> <li>11 ...Japanese</li> <li>12 ... Other</li> </ul>	<ul style="list-style-type: none"> <li>1 White</li> <li>2 Non-white (Aboriginal or Other Visible Minority)</li> </ul>
	<p>b) <i>“Are you an Aboriginal person, that is, First Nations, Métis or Inuk (Inuit)?”</i></p>	<ul style="list-style-type: none"> <li>1 Yes</li> <li>2 No</li> </ul>	

<b>Immigrant status*</b>	a) Immigrant flag: this derived variable indicates if the respondent is an immigrant or not.	1 Landed immigrant/non-permanent resident 2 Non-immigrant (Canadian born)	1 Non-immigrant 2 Immigrant who lived in Canada for 0-9 years 3 Immigrant who lived in Canada for 10+ years
	b) Length of time in Canada since immigration: this derived variable indicates the length of time in years the respondent became a landed immigrant.	1 0-9 years 2 >=10 years	
<b>Education*</b> (CCHS 2001-2010)	This derived variable indicates the highest level of education acquired by the respondent.	1 Less than secondary school graduation 2 Secondary graduation, no post-secondary education 3 Some post-secondary degree/diploma 4 Post-secondary degree/diploma	/
<b>Education*</b> (CCHS2015-2018)	This derived variable indicates the highest level of education attained by the respondent	1 less than secondary graduation 2 Secondary school graduation, no post-secondary education 3 Post-secondary certificate/diploma or university degree	/
<b>Total household income*</b> (CCHS 2001-2010)	This derived variable classifies the total household income into 5 categories based on total household income and the number of people living in the household.	1 Lowest income 2 Lower middle income 3 Middle income 4 Upper middle income 5 Highest income - Population exclusion: residents of territories	/
<b>Total household income*</b> (CCHS 2015-2018)	This derived variable is a distribution of respondents in deciles (ten categories including approximately the same percentage of residents for each province) based on their value for	1 Decile 1 2 Decile 2 3 Decile 3 ... ... 9 Decile 9	For each respondent, a relative measure of their household income to the household incomes of all other respondents: 1 Quintile 1 2 Quintile 2

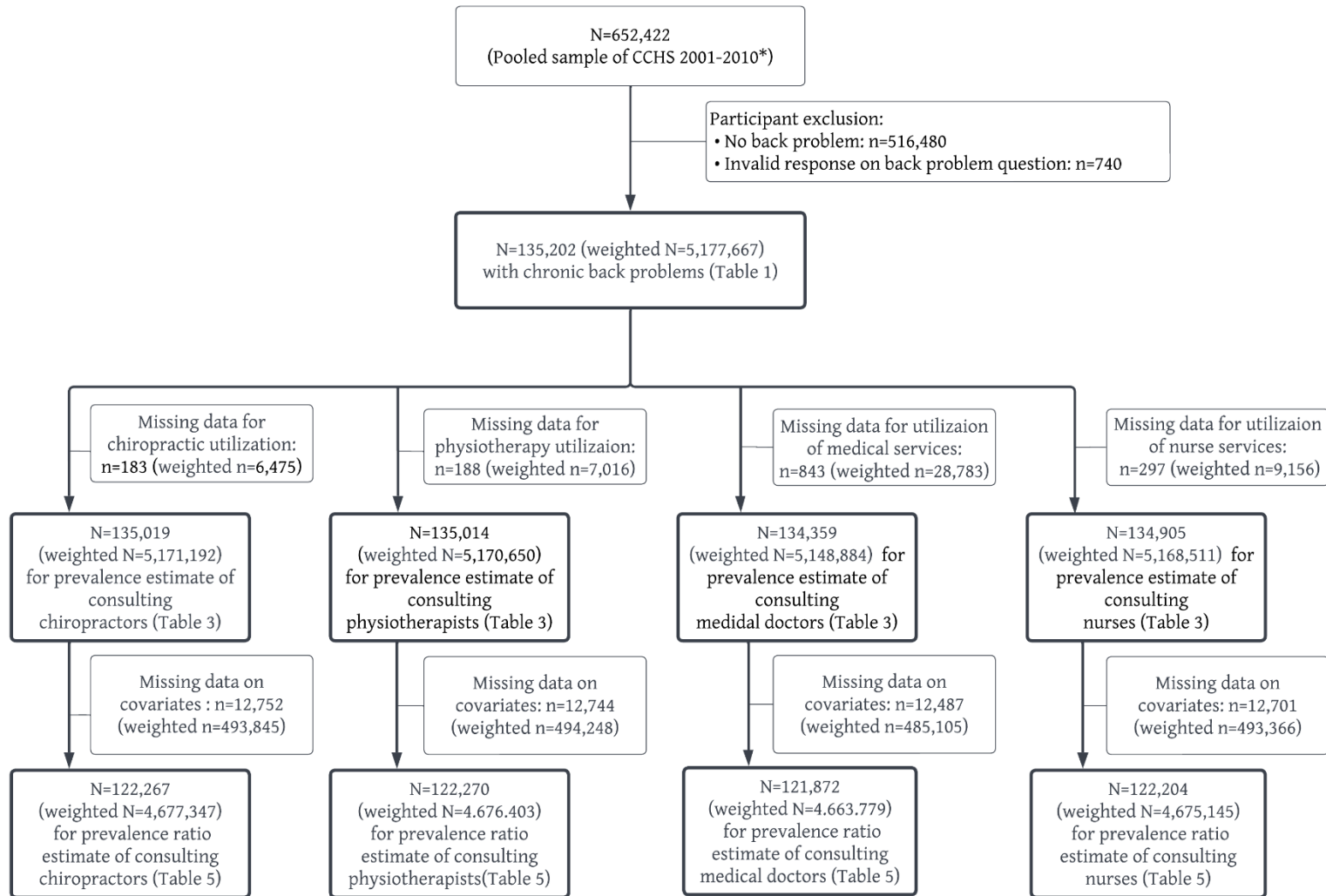
	NCDVADR, i.e., the adjusted ratio of their total household income to the low income cut-off corresponding to their household and community size.	10 Decile 10 - Population exclusion: residents of territories	3 Quintile 3 4 Quintile 4 5 Quintile 5 - Population exclusion: residents of territories
<b>Working status last week*</b>	a) <i>“Last week, did you work at a job or a business? Please include part-time jobs, seasonal work, contract work, self-employment, baby-sitting and any other paid work, regardless of the number of hours worked.”</i>	1 Yes 2 No 3 Permanently unable to work - Population exclusions: Age<15 or >75	1 Worked at a job or business 2 Had a job but did not work(absent) 3 Permanently unable to work - Population exclusions: Age<15 or >75
	b) <i>“Last week, did you have a job or business from which you were absent?”</i>	1 Yes 2 No	
<b>Marital status</b>	<i>“What is [household member name]’s marital status? Is [he/she]... ?”</i>	1 Married 2 Living common-law 3 Widowed 4 Separated 5 Divorced 6 Single, never married	1 Married 2 Living common-law 3 Widowed/Separated/Divorced 4 Single, never married
<b>Type of smoker</b>	<i>“At the present time, do you smoke cigarettes daily, occasionally or not at all?”</i>	1 Daily 2 Occasionally 3 Not at all	/
<b>Type of drinker*</b>	a) <i>“During the past 12 months, how often did you drink alcoholic beverages?”</i>	1 Less than once a month 2 Once a month 3 2 to 3 times a month 4 Once a week 5 2 to 3 times a week 6 4 to 6 times a week 7 Every day	1 Regular drinker 2 Occasional drinker 3 Never drank/Did not drink in the last 12 months
	b) <i>“During the past 12 months, that is, from [date one year ago] to</i>	1 Yes 2 No	

	<i>yesterday, have you had a drink of beer, wine, liquor or any other alcoholic beverage?"</i>		
<b>Physical activity level*</b> (CCHS 2001-2010)	This derived variable categorizes respondent as being “active”, “moderate”, or “inactive” based on the total daily Energy Expenditure values (kcal/kg/day). The Physical Activity Index follows the same criteria used to categorize individuals in the Ontario Health Survey (OHS) and in the Campbell’s Survey on Well Being.	Energy Expenditure is calculated using the frequency and duration per session of the physical activity as well as the MET value of the activity. The MET is a value of metabolic energy cost expressed as a multiple of the resting metabolic rate. For example, an activity of 4 METS requires four times the amount of energy as compared to when the body is at rest. 1 Active 2 Moderate active 3 Inactive	/
<b>Physical activity level*</b> (CCHS 2015-2018)	This derived variable indicates whether a respondent is physically active according to the recommended level from Canadian Physical Activity Guidelines (CPAG): at least 150 minutes of moderate- to vigorous-intensity aerobic physical activity per week, in bouts of 10 minutes or more.	Based on the total number of minutes a respondent engaged in active transportation and moderate to vigorous recreational and other physical activities: 1 Physically active at / above recommended level from CPAG 2 Physically active below recommended level from CPAG 3 No physical activity minutes reported	/
<b>Body mass index*</b>	A derived variable assigns adult respondents aged 18 and over (except pregnant women) to one of the following categories, according to their Body Mass Index (BMI) and based on classification system recommended by Health Canada	1 Underweight 2 Normal/Acceptable weight 3 Overweight 4 Obese class I, II, or III (available for CCHS 2003-2018) - Population exclusion: age<18 or pregnant women	1 Underweight 2 Normal/Acceptable weight 3 Overweight (including Obese class I, II, or III) - Population exclusion: age<18 or pregnant women

	and the World Health Organization		
<b>Self-perceived general health</b>	<i>“In general, would you say your health is... ?”</i>	1 Excellent 2 Very good 3 Good 4 Fair 5 Poor	/

\* Derived variables are produced by Statistics Canada for Public Use Microdata File (PUMF) of Canadian Community Health Survey, accessed via Ontario Data Documentation, Extraction Service and Infrastructure Initiative.

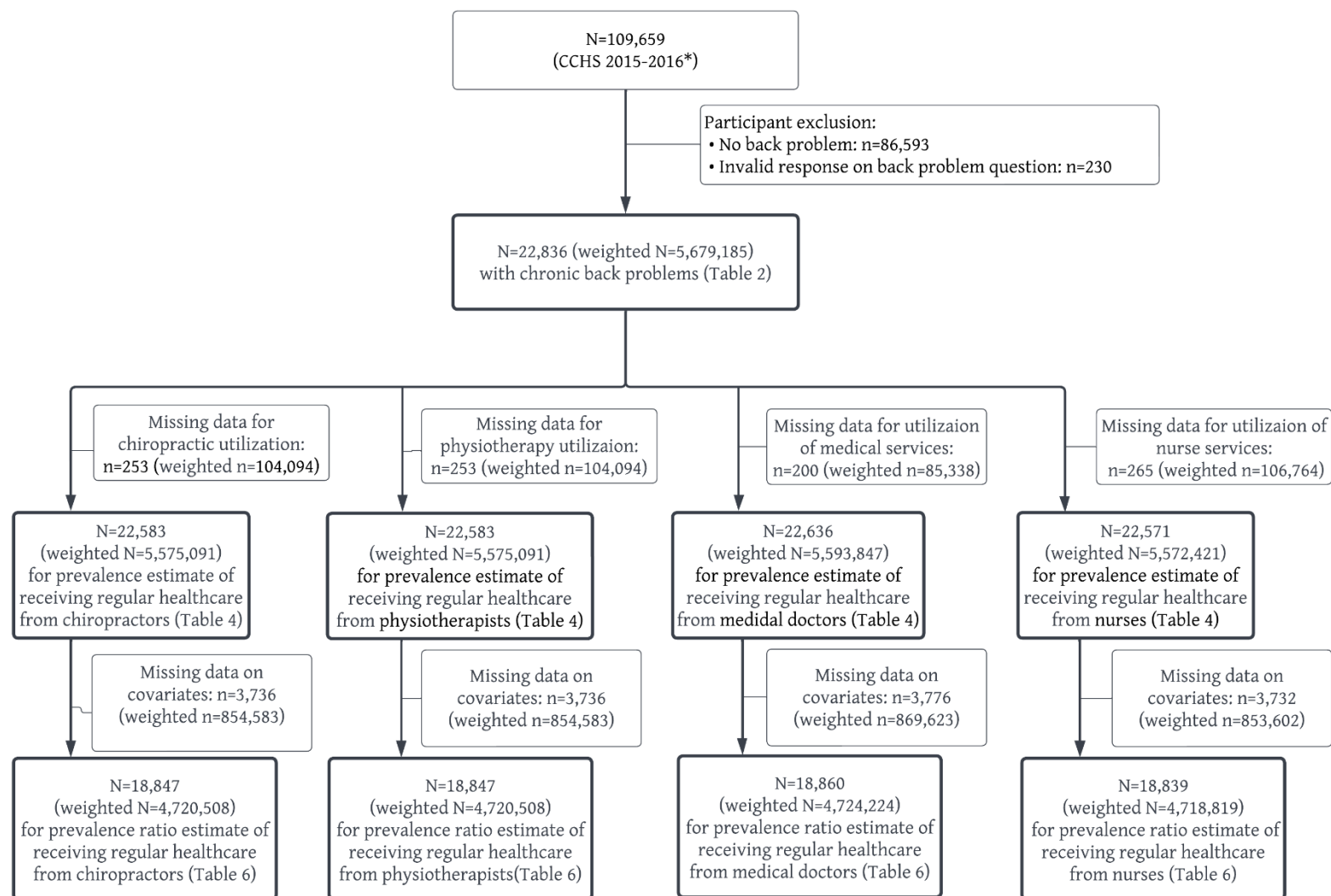
**Appendix A2.** Flow diagram for study sample of Canadian Community Health Survey (CCHS) respondents from 2001 to 2010



\*: Data source: Public Use Microdata File of Canadian Community Health Survey(2001-2010) produced by Statistics Canada and accessed via Ontario Data Documentation, Extraction Service and Infrastructure Initiative.



**Appendix A3.** Flow diagram for study sample of Canadian Community Health Survey (CCHS) respondents from 2015/2016



\*: Data source: Public Use Microdata File of Canadian Community Health Survey(2015-2016) produced by Statistics Canada and accessed via Ontario Data Documentation, Extraction Service and Infrastructure Initiative.

**Appendix A4.** Prevalence of consultations with health care professionals among Canadians with chronic back problems: Pooled analysis of CCHS 2001-2010\*

		<b>Prevalence (95%) of consultations with health care professionals</b>			
<b>Characteristics</b>	<b>Weighted N</b>	<b>Medical doctor(incl. specialists)</b>	<b>Chiropractor</b>	<b>Physiotherapist</b>	<b>Nurse</b>
<b>Overall prevalence</b>	5177667	87.9(87.6 - 88.2)	24.0(23.6 - 24.4)	17.2(16.9 - 17.6)	14.0(13.7 - 14.2)
<b>Age group (years)</b>					
12-19	153438	82.1 (80.4-83.8)	30.7 (28.7-32.8)	18.9 (17.2-20.5)	16.3 (14.8-17.9)
20-34	968514	84.2 (83.5-85.0)	27.8 (26.9-28.8)	18.0 (17.2-18.8)	17.3 (16.6-18.0)
35-49	1626494	85.1 (84.5-85.7)	27.6 (26.8-28.3)	18.9 (18.2-19.6)	13.0 (12.5-13.6)
50-64	1460551	90.1 (89.6-90.6)	22.7 (22.0-23.4)	17.1 (16.4-17.7)	12.0 (11.5-12.5)
65-79	753250	93.8 (93.4-94.2)	16.3 (15.7-17.0)	14.1 (13.5-14.8)	13.0 (12.4-13.7)
≥80	215419	95.0 (94.3-95.6)	10.8 ( 9.8-11.7)	12.2 (11.2-13.2)	20.6 (19.3-21.9)
<b>Sex</b>					
Male	2438085	82.9 (82.4-83.4)	24.2 (23.6-24.8)	16.0 (15.5-16.5)	11.3 (10.9-11.7)
Female	2739582	92.4 (92.1-92.7)	23.9 (23.4-24.4)	18.3 (17.9-18.8)	16.3 (15.9-16.7)
<b>Province of residence</b>					
Newfoundland	84353	92.0 (90.9-93.1)	11.9 (10.5-13.3)	14.3 (12.7-15.9)	13.7 (12.2-15.2)
Prince Edward Island	21198	89.9 (88.1-91.8)	10.6 ( 8.7-12.5)	17.4 (15.2-19.7)	13.6 (11.7-15.5)
Nova Scotia	168551	91.4 (90.4-92.5)	11.5 (10.2-12.7)	18.8 (17.3-20.3)	12.1 (11.0-13.2)
New Brunswick	129342	89.7 (88.5-90.8)	12.7 (11.4-13.9)	16.7 (15.3-18.2)	14.3 (13.1-15.6)
Quebec	1056063	84.0 (83.2-84.8)	18.0 (17.2-18.7)	15.6 (14.9-16.4)	18.7 (18.0-19.5)
Ontario	2066139	89.1 (88.6-89.5)	24.0 (23.4-24.6)	16.2 (15.6-16.8)	13.2 (12.7-13.7)
Manitoba	180427	86.8 (85.5-88.0)	34.5 (32.7-36.3)	19.0 (17.6-20.5)	12.5 (11.3-13.8)

		<b>Prevalence (95%) of consultations with health care professionals</b>			
<b>Characteristics</b>	<b>Weighted N</b>	<b>Medical doctor(incl. specialists)</b>	<b>Chiropractor</b>	<b>Physiotherapist</b>	<b>Nurse</b>
Saskatchewan	161018	89.2 (88.3-90.2)	31.7 (30.2-33.2)	16.1 (14.9-17.4)	12.9 (11.9-14.0)
Alberta	531226	87.2 (86.3-88.1)	34.3 (32.9-35.6)	19.2 (18.0-20.3)	12.8 (11.9-13.7)
British Columbia	766805	89.1 (88.4-89.8)	27.7 (26.8-28.7)	20.7 (19.8-21.5)	10.8 (10.2-11.4)
Yukon, Northwest Territories and Nunavut	12545	81.1 (78.8-83.4)	15.2 (13.2-17.1)	17.7 (15.7-19.8)	32.4 (29.9-34.9)
<b>Cultural/racial background</b>					
White	4360237	88.1 (87.8-88.4)	25.1 (24.7-25.5)	16.9 (16.6-17.3)	14.3 (14.0-14.7)
Non-white	675691	87.6 (86.6-88.5)	18.4 (17.2-19.6)	19.1 (17.8-20.3)	11.4 (10.6-12.3)
<b>Immigrant status</b>					
Non-immigrant	4038148	87.5 (87.2-87.8)	25.6 (25.2-26.1)	17.0 (16.7-17.4)	15.0 (14.7-15.3)
Immigrant(0-9 years)	171453	86.7 (84.7-88.7)	17.2 (14.7-19.7)	19.5 (16.9-22.2)	9.0 ( 7.4-10.7)
Immigrant(≥10 years)	845610	90.7 (89.9-91.4)	18.6 (17.6-19.6)	17.7 (16.7-18.8)	9.9 ( 9.2-10.7)
<b>Highest level of education</b>					
Less than secondary	1165673	87.5 (86.9-88.0)	17.3 (16.7-18.0)	12.7 (12.1-13.3)	13.4 (12.9-14.0)
Secondary graduate	850607	86.8 (86.1-87.5)	24.8 (23.9-25.8)	15.8 (14.9-16.6)	12.6 (11.9-13.3)
Some post-secondary education	404047	88.3 (87.1-89.4)	26.8 (25.3-28.2)	17.3 (16.2-18.5)	15.5 (14.4-16.6)
Post-secondary graduate/university degree	2629333	88.6 (88.2-89.0)	26.7 (26.1-27.2)	19.7 (19.2-20.2)	14.4 (14.0-14.9)
<b>Total household income</b>					
1st quintile	695108	88.5 (87.7-89.3)	13.6 (12.8-14.4)	13.0 (12.1-13.8)	16.8 (15.9-17.6)
2nd quintile	689621	87.9 (87.0-88.7)	20.4 (19.3-21.4)	15.5 (14.6-16.5)	14.5 (13.8-15.3)
3rd quintile	906331	88.5 (87.9-89.2)	24.4 (23.5-25.4)	16.4 (15.6-17.1)	13.9 (13.2-14.5)
4th quintile	1104385	87.4 (86.7-88.0)	28.1 (27.2-28.9)	18.7 (18.0-19.4)	12.9 (12.4-13.5)

		<b>Prevalence (95%) of consultations with health care professionals</b>			
<b>Characteristics</b>	<b>Weighted N</b>	<b>Medical doctor(incl. specialists)</b>	<b>Chiropractor</b>	<b>Physiotherapist</b>	<b>Nurse</b>
5th quintile	1033120	87.9 (87.3-88.5)	30.7 (29.8-31.7)	21.0 (20.2-21.9)	13.0 (12.3-13.7)
NS/NA†	749101	87.4 (86.7-88.2)	21.3 (20.4-22.2)	16.4 (15.5-17.2)	13.7 (13.0-14.4)
<b>Working status last week</b>					
Working	2753985	85.0 (84.5-85.4)	29.0 (28.4-29.5)	17.4 (16.9-17.9)	11.8 (11.4-12.2)
Absent	258068	89.8 (88.5-91.1)	27.9 (26.1-29.7)	27.7 (25.9-29.5)	19.8 (18.3-21.3)
No job	1348962	90.5 (90.1-91.0)	19.1 (18.5-19.7)	15.8 (15.2-16.4)	14.7 (14.1-15.2)
Unable/permanent	256875	96.2 (95.5-96.8)	12.3 (11.0-13.5)	18.3 (16.8-19.8)	21.6 (20.2-23.0)
NA(age <15 or >75)	457744	93.2 (92.6-93.7)	14.2 (13.4-15.0)	13.5 (12.7-14.3)	17.7 (16.9-18.6)
<b>Marital status</b>					
Married	2809757	89.3 (88.9-89.7)	25.1 (24.6-25.7)	17.5 (17.0-18.0)	12.1 (11.7-12.5)
Common-law	515814	82.9 (81.9-84.0)	24.5 (23.3-25.7)	16.9 (15.8-18.0)	15.7 (14.7-16.6)
Widowed/Divorced/Separated	827494	91.4 (90.9-91.9)	18.6 (17.8-19.3)	15.7 (15.1-16.4)	16.0 (15.3-16.6)
Single	1016061	83.8 (83.0-84.5)	25.2 (24.3-26.0)	17.8 (17.1-18.5)	16.6 (15.9-17.3)
<b>Type of smoker</b>					
Daily	1180476	84.0 (83.4-84.7)	19.2 (18.4-19.9)	14.1 (13.4-14.8)	14.2 (13.6-14.8)
Occasional	242317	86.2 (84.8-87.6)	25.6 (23.7-27.5)	16.7 (15.0-18.4)	15.4 (14.0-16.8)
Not at all	3736084	89.3 (88.9-89.6)	25.5 (25.0-25.9)	18.2 (17.8-18.7)	13.8 (13.5-14.1)
<b>Type of drinker</b>					
Regular	3086270	86.6 (86.2-87.0)	26.5 (25.9-27.0)	17.9 (17.5-18.4)	12.9 (12.5-13.3)
Occasional	942035	89.6 (89.0-90.3)	23.0 (22.1-23.8)	16.4 (15.7-17.1)	15.3 (14.7-16.0)
Did not drink	1070831	90.4 (89.9-91.0)	18.3 (17.5-19.0)	15.9 (15.1-16.6)	15.8 (15.2-16.5)

		<b>Prevalence (95%) of consultations with health care professionals</b>			
<b>Characteristics</b>	<b>Weighted N</b>	<b>Medical doctor(incl. specialists)</b>	<b>Chiropractor</b>	<b>Physiotherapist</b>	<b>Nurse</b>
<b>Physical activity</b>					
Active	1084632	86.0 (85.3-86.7)	27.8 (26.9-28.7)	20.1 (19.3-20.9)	13.9 (13.3-14.6)
Moderate active	1182652	88.6 (88.0-89.1)	26.6 (25.9-27.4)	18.4 (17.7-19.0)	13.8 (13.2-14.4)
Inactive	2740793	88.2 (87.8-88.6)	21.8 (21.2-22.3)	15.7 (15.2-16.1)	13.9 (13.6-14.3)
<b>BMI</b>					
Underweight	133840	89.6 (88.0-91.2)	19.9 (17.7-22.1)	17.8 (15.7-19.8)	16.5 (14.7-18.4)
Normal weight	1900439	86.5 (86.0-87.1)	24.3 (23.7-25.0)	18.0 (17.4-18.5)	13.6 (13.1-14.1)
Overweight (incl. obese)	2626192	88.6 (88.3-89.0)	24.3 (23.7-24.8)	16.9 (16.4-17.3)	13.5 (13.1-13.9)
NA(age<18 or pregnant)†	331682	87.5 (86.5-88.5)	24.2 (22.9-25.5)	17.0 (15.9-18.1)	15.9 (14.9-17.0)
<b>Perceived general health</b>					
Poor	355517	96.8 (96.2-97.3)	13.5 (12.5-14.6)	20.6 (19.4-21.8)	24.8 (23.5-26.0)
Fair	834648	93.5 (93.0-94.0)	17.4 (16.6-18.2)	17.5 (16.6-18.3)	17.3 (16.6-18.0)
Good	1745341	88.3 (87.8-88.8)	23.9 (23.2-24.5)	17.2 (16.6-17.7)	13.4 (12.9-13.8)
Very good	1610222	85.6 (85.1-86.2)	27.8 (27.1-28.5)	16.7 (16.1-17.4)	12.0 (11.4-12.5)
Excellent	625295	80.4 (79.3-81.5)	29.5 (28.3-30.7)	16.4 (15.4-17.5)	10.2 ( 9.4-10.9)
<b>CCHS survey cycle</b>					
2001	905678	88.9 (88.3-89.5)	25.9 (25.1-26.7)	17.8 (17.1-18.5)	12.1 (11.5-12.7)
2003	1043833	87.4 (86.8-88.1)	24.0 (23.2-24.9)	16.0 (15.3-16.7)	13.2 (12.5-13.8)
2005	1017931	87.2 (86.6-87.8)	24.0 (23.2-24.8)	16.8 (16.1-17.5)	14.2 (13.6-14.8)
2007	1129597	87.0 (86.4-87.7)	22.8 (22.0-23.6)	16.9 (16.2-17.6)	14.6 (13.9-15.2)
2009	1080627	89.1 (88.4-89.8)	23.6 (22.6-24.6)	18.6 (17.6-19.6)	15.4 (14.7-16.1)

BMI – body mass index; CCHS – Canadian Community Health Survey; CI – confidence interval; NA – not applicable; NS – not stated; PR – prevalence ratio

\*Weighted using Canadian Community Health Survey sampling weights provided by Statistics Canada to provide population estimates; public use microdata file used (without bootstrap weights; only scaled sampling weight applied)

†NA=not applicable according to population exclusions; NS=not stated or responses without enough information for classification

**Appendix A5. Prevalence of having received regular health care from different health professionals among Canadians with chronic back problems: CCHS 2015-2016**

		<b>Prevalence (95% CI) of having received regular health care from different health professionals</b>			
<b>Characteristics</b>	<b>Weighted N</b>	<b>Medical doctor (incl. specialists)</b>	<b>Chiropractor</b>	<b>Physiotherapist</b>	<b>Nurse</b>
Overall prevalence	5679185	86.7 (85.8 - 87.6)	14.5 (13.7 - 15.3)	10.7 (10.0 - 11.4)	6.6 (6.1 - 7.0)
Age group (years)					
12-19	152259	79.6 (74.3-85.0)	16.4 (11.7-21.1)	19.7 (11.9-27.5)	4.6 (1.5- 7.6)
20-34	892353	73.2 (68.3-78.1)	13.1 (11.5-14.7)	9.3 (7.9-10.8)	5.3 (4.2- 6.4)
35-49	1373547	83.9 (81.3-86.6)	18.4 (15.9-20.8)	11.5 (9.6-13.5)	5.4 (3.5- 7.2)
50-64	1855816	89.3 (87.4-91.2)	14.4 (13.1-15.6)	10.8 (8.9-12.8)	6.4 (5.4- 7.3)
65-79	1114184	95.6 (95.0-96.2)	13.0 (11.6-14.3)	10.0 (8.3-11.7)	8.2 (7.2- 9.1)
≥80	291026	94.8 (93.6-96.1)	6.7 (5.7- 7.7)	8.0 (5.5-10.5)	12.5 (8.3-16.8)
Sex					
Male	2715722	84.0 (83.5-84.5)	14.5 (13.1-15.8)	9.4 (8.2-10.6)	5.6 (5.0- 6.3)
Female	2963464	89.2 (87.8-90.6)	14.6 (13.3-15.8)	11.9 (10.3-13.5)	7.4 (6.8- 8.1)
Province of residence					
Newfoundland	100582	92.9 (88.2-97.6)	12.9 (9.0-16.9)	10.2 (5.0-15.5)	10.4 (5.1-15.7)
Prince Edward Island	22574	92.5 (89.6-95.4)	8.5 (5.9-11.1)	11.6 (7.6-15.5)	9.0 (5.2-12.8)
Nova Scotia	191084	90.3 (87.2-93.4)	12.0 (8.7-15.4)	10.3 (8.6-12.1)	8.6 (7.7- 9.4)
New Brunswick	138278	91.3 (88.8-93.9)	8.5 (6.3-10.7)	9.3 (6.9-11.6)	7.7 (5.3-10.1)
Quebec	1238378	76.9 (74.3-79.5)	8.6 (6.6-10.5)	8.8 (7.6-10.0)	7.3 (5.7- 8.8)

		<b>Prevalence (95% CI) of having received regular health care from different health professionals</b>			
<b>Characteristics</b>	<b>Weighted N</b>	<b>Medical doctor (incl. specialists)</b>	<b>Chiropractor</b>	<b>Physiotherapist</b>	<b>Nurse</b>
Ontario	2167335	92.1 (91.1-93.0)	16.1 (15.2-16.9)	10.8 (9.2-12.5)	7.5 (5.6- 9.5)
Manitoba	198888	86.9 (84.1-89.7)	19.1 (14.6-23.6)	15.0 (11.0-18.9)	7.2 (5.9- 8.5)
Saskatchewan	170695	86.2 (82.7-89.7)	25.4 (22.9-27.9)	14.9 (9.0-20.8)	9.6 (7.9-11.3)
Alberta	624265	85.2 (80.6-89.7)	19.4 (14.8-24.1)	11.3 (8.7-13.8)	4.4 (3.5- 5.3)
British Columbia	808536	87.3 (85.6-88.9)	14.6 (11.7-17.5)	11.4 (8.1-14.7)	2.5 (1.6- 3.4)
Yukon, Northwest Territories, and Nunavut	18571	43.5 (35.7-51.2)	7.6 (4.3-10.9)	8.0 (4.8-11.3)	12.0 (6.8-17.2)
Cultural/racial background					
White	4395169	87.3 (86.3-88.3)	15.8 (14.6-17.1)	10.8 (10.2-11.4)	7.0 (6.3- 7.6)
Non-white	1075890	84.2 (81.9-86.5)	9.7 (7.5-11.8)	10.7 (6.8-14.6)	5.0 (3.2- 6.8)
Immigrant status					
Non-immigrant	4304899	86.2 (85.5-86.9)	15.9 (14.4-17.3)	10.5 (9.5-11.5)	7.2 (6.4- 7.9)
Immigrant(0-9 years)	193228	73.8 (63.8-83.8)	7.0 (4.1- 9.8)	6.2 (1.1-11.3)	2.3 (0.0- 5.5)
Immigrant(≥10 years)	947396	91.6 (90.4-92.8)	11.0 (9.8-12.2)	13.2 (10.6-15.7)	4.9 (3.0- 6.9)
Highest level of education					
Less than secondary	975414	85.9 (83.2-88.5)	10.0 (9.3-10.6)	6.9 (5.0- 8.9)	8.0 (6.2- 9.9)
Secondary graduate	1267576	87.5 (85.0-90.0)	13.8 (12.1-15.6)	9.0 (7.5-10.5)	6.5 (4.7- 8.4)
Some post-secondary education	3353680	86.7 (85.5-87.9)	16.3 (14.5-18.1)	12.5 (11.3-13.6)	6.2 (5.4- 7.0)



		<b>Prevalence (95% CI) of having received regular health care from different health professionals</b>			
<b>Characteristics</b>	<b>Weighted N</b>	<b>Medical doctor (incl. specialists)</b>	<b>Chiropractor</b>	<b>Physiotherapist</b>	<b>Nurse</b>
Distribution of total household income					
1st quintile	1240789	83.3 (80.9-85.7)	7.3 (5.8- 8.8)	6.2 (4.5- 8.0)	7.4 (6.3- 8.4)
2nd quintile	1181106	86.3 (83.9-88.7)	10.8 (8.1-13.5)	8.3 (7.2- 9.3)	6.5 (5.3- 7.8)
3rd quintile	1193127	87.7 (85.7-89.7)	14.6 (13.6-15.7)	10.9 (8.6-13.2)	6.4 (5.7- 7.2)
4th quintile	1020416	88.0 (86.0-89.9)	19.6 (16.9-22.2)	13.4 (11.2-15.6)	6.7 (5.5- 7.8)
5th quintile	1022285	89.6 (87.6-91.5)	22.3 (18.2-26.5)	15.8 (13.3-18.3)	5.6 (4.0- 7.2)
NA(residents of territories)†	18211	44.3 (35.9-52.8)	7.8 (4.2-11.3)	8.2 (4.9-11.5)	11.9 (7.1-16.7)
Working status last week					
Working	2796283	83.4 (81.5-85.3)	17.7 (15.6-19.9)	11.3 (10.2-12.3)	4.8 (3.9- 5.7)
Absent	298633	85.8 (79.5-92.0)	20.0 (11.0-28.9)	15.8 (9.9-21.8)	7.4 (4.1-10.7)
No job	1866849	89.6 (87.3-91.8)	10.8 (9.2-12.4)	9.7 (8.0-11.4)	8.0 (7.0- 9.1)
NA(age <15 or >75)†	579002	94.7 (92.6-96.8)	9.0 (6.8-11.2)	9.1 (5.6-12.6)	10.1 (7.7-12.5)
Marital status					
Married	2859623	91.4 (90.5-92.4)	17.0 (15.3-18.8)	11.4 (9.3-13.6)	6.6 (5.4- 7.7)
Common-law	712836	82.3 (80.2-84.4)	14.4 (10.7-18.0)	9.6 (6.5-12.7)	6.2 (3.6- 8.8)
Widowed/Divorced/Separated	948310	90.1 (88.9-91.3)	10.8 (9.2-12.4)	10.3 (6.9-13.8)	8.0 (6.9- 9.1)
Single	1144408	75.1 (70.6-79.7)	11.5 (9.9-13.1)	9.8 (7.9-11.7)	5.7 (4.5- 6.9)
Type of smoker					

		<b>Prevalence (95% CI) of having received regular health care from different health professionals</b>			
<b>Characteristics</b>	<b>Weighted N</b>	<b>Medical doctor (incl. specialists)</b>	<b>Chiropractor</b>	<b>Physiotherapist</b>	<b>Nurse</b>
Daily	1056320	80.3 (76.9-83.8)	8.5 (7.3- 9.8)	5.5 (4.4- 6.6)	6.5 (5.1- 7.9)
Occasional	280471	79.5 (77.3-81.6)	15.2 (12.3-18.1)	13.6 (10.5-16.7)	7.9 (4.4-11.5)
Not at all	4338906	88.7 (87.8-89.7)	15.9 (14.6-17.3)	11.8 (10.4-13.2)	6.5 (5.8- 7.2)
Type of drinker					
Regular	3457259	85.7 (84.5-86.8)	17.1 (15.4-18.8)	11.3 (10.7-11.9)	5.8 (5.0- 6.6)
Occasional	987033	86.9 (84.6-89.3)	11.0 (10.0-12.0)	9.7 (6.7-12.6)	8.3 (6.5-10.1)
Did not drink	1207389	89.6 (87.3-91.8)	10.1 (9.3-10.9)	9.7 (7.4-12.0)	7.3 (5.7- 8.9)
Physical activity					
Active	2946824	85.2 (84.2-86.2)	16.5 (14.7-18.4)	11.3 (10.0-12.6)	6.3 (5.5- 7.1)
Moderate active	1207048	87.2 (86.0-88.3)	14.3 (12.9-15.7)	10.4 (9.2-11.6)	6.4 (5.0- 7.7)
Inactive	1306891	89.9 (88.7-91.1)	10.2 (8.8-11.6)	8.9 (7.4-10.4)	7.6 (6.5- 8.6)
NA(age <18)†	94521	80.9 (74.5-87.4)	17.3 (10.9-23.8)	20.4 (9.9-30.9)	5.5 (0.0-11.0)
BMI classification - International standard					
Underweight	92489	78.9 (71.0-86.8)	10.6 (3.1-18.1)	3.5 (0.3- 6.6)	9.7 (1.5-17.9)
Normal weight	1922755	83.8 (82.7-84.9)	13.9 (12.0-15.8)	11.2 (9.8-12.5)	5.1 (4.3- 5.9)
Overweight (incl. obese)	3168292	88.2 (87.3-89.1)	15.6 (14.1-17.2)	10.6 (9.6-11.5)	7.1 (6.3- 7.9)
NA(age<18 or pregnant)†	95524	81.1 (74.8-87.4)	17.5 (10.6-24.5)	20.6 (10.2-31.0)	5.4 (0.1-10.8)
Perceived general health					

		<b>Prevalence (95% CI) of having received regular health care from different health professionals</b>			
<b>Characteristics</b>	<b>Weighted N</b>	<b>Medical doctor (incl. specialists)</b>	<b>Chiropractor</b>	<b>Physiotherapist</b>	<b>Nurse</b>
Poor	462785	92.9 (89.5-96.2)	7.6 (3.4-11.7)	10.8 (8.6-13.0)	12.3 (9.2-15.5)
Fair	943777	87.5 (83.8-91.2)	10.0 (7.8-12.2)	10.3 (8.3-12.3)	7.8 (6.7- 9.0)
Good	1925078	87.3 (86.4-88.3)	14.9 (14.2-15.7)	11.3 (9.3-13.3)	7.0 (6.1- 7.9)
Very good	1683598	84.9 (82.0-87.7)	17.6 (15.3-19.9)	10.3 (8.7-12.0)	4.9 (3.8- 6.0)
Excellent	654091	84.3 (80.4-88.2)	16.8 (14.8-18.9)	10.5 (7.1-13.8)	3.7 (2.3- 5.1)

BMI – body mass index; CCHS – Canadian Community Health Survey; CI – confidence interval; NA – not applicable; NS – not stated; PR – prevalence ratio

\*Weighted using Canadian Community Health Survey sampling weights provided by Statistics Canada to provide population estimates

†NA=not applicable according to population exclusions; NS=not stated or responses without enough information for classification