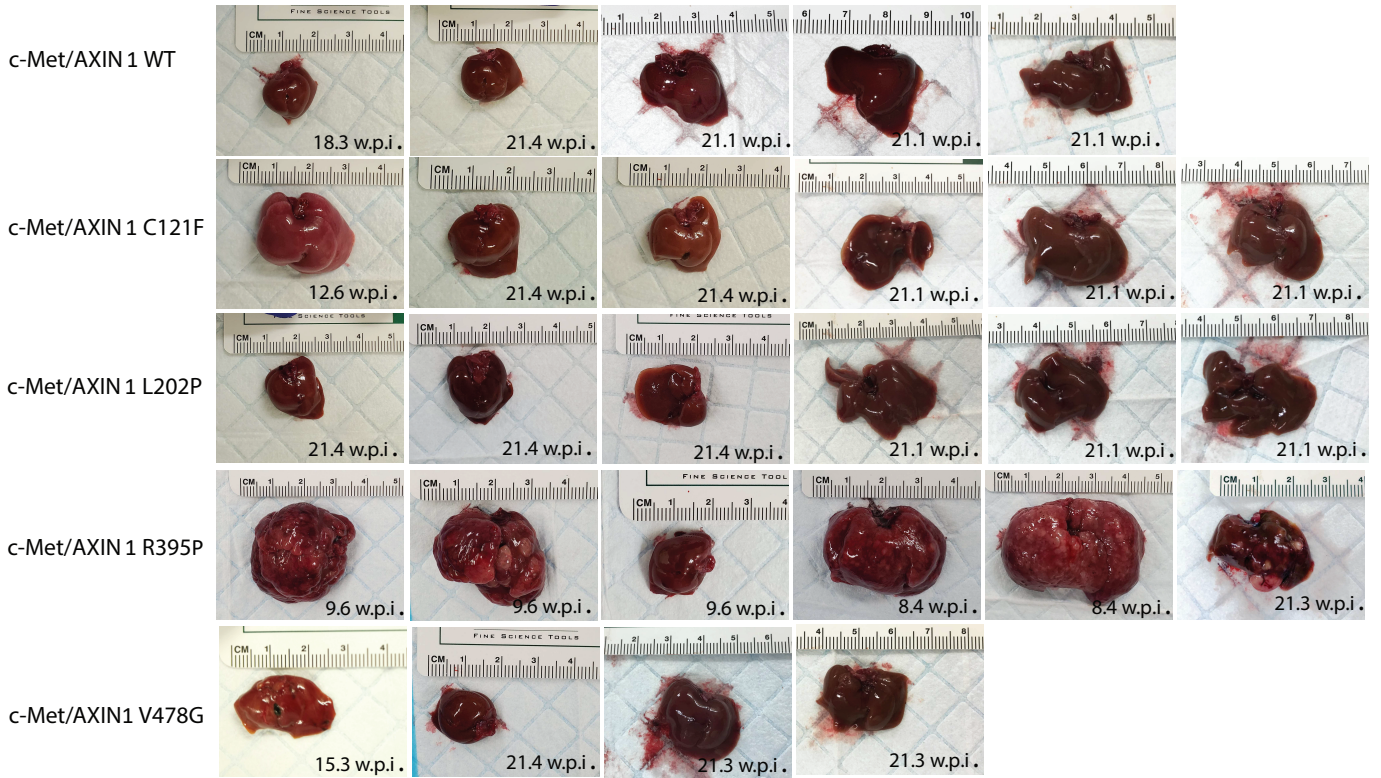
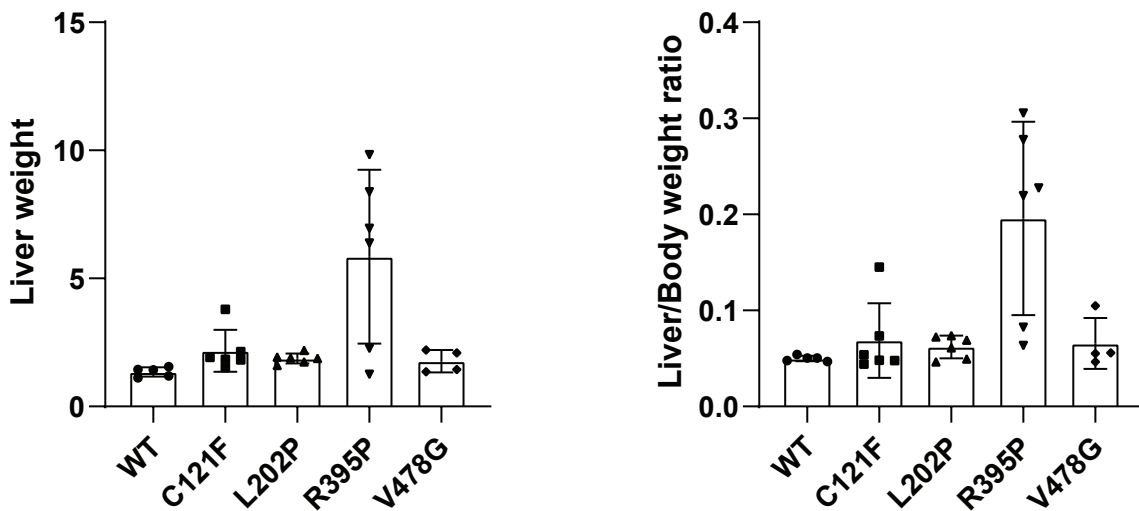


A**B**

Group	Total	Number of animals with tumors	Percentage with tumors(%)
c-Met/AXIN1_WT	5	0	0
c-Met/AXIN1_C121F	6	0	0
c-Met/AXIN1_L202P	6	0	0
c-Met/AXIN1_R395P	6	5	83.3
c-Met/AXIN1_V478G	5	1	25

C

Supplementary Fig.16 Strong AXIN1 missense variants induce liver tumor formation in mice

(A) Hydrodynamic tail vein injection of AXIN1-WT, C121F, L202P, R395P and V478G variants. All variants were co-transfected with c-Met. Numerous lesions are observed in AXIN1-R395P injected mice within 10 weeks following injection, and in one AXIN1-V478G injected animal. No tumors were observed in WT, C121F and L202P injected animals. (B) Table depicting the number of injected animals for each variant, number with tumors and percentage. (C) Liver weights and liver-to-body weight ratios for all injected variants.