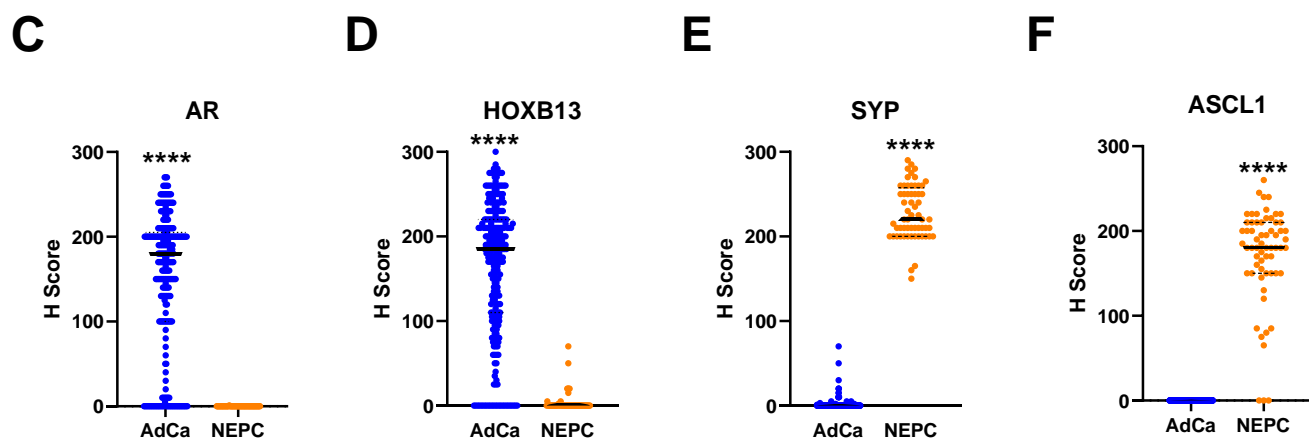
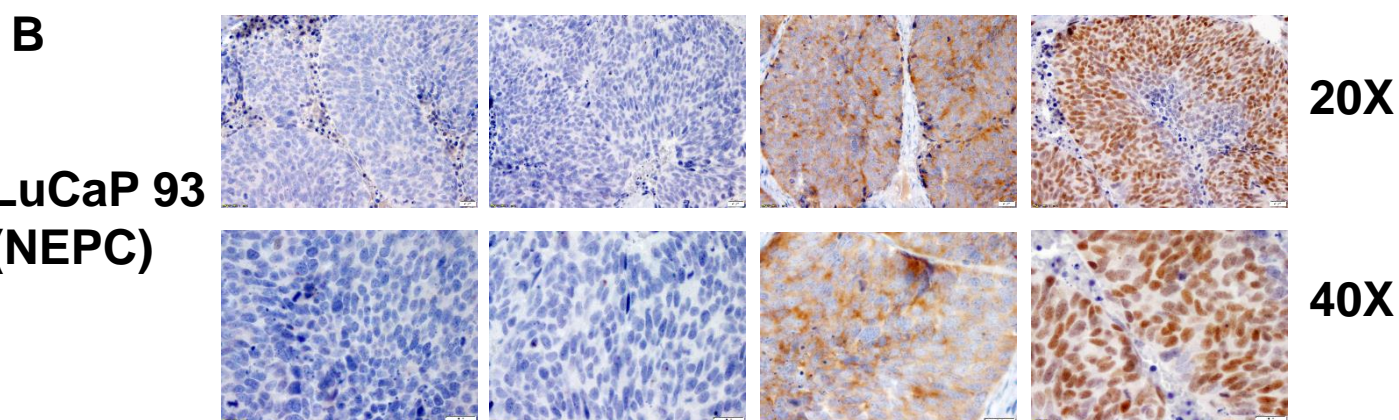
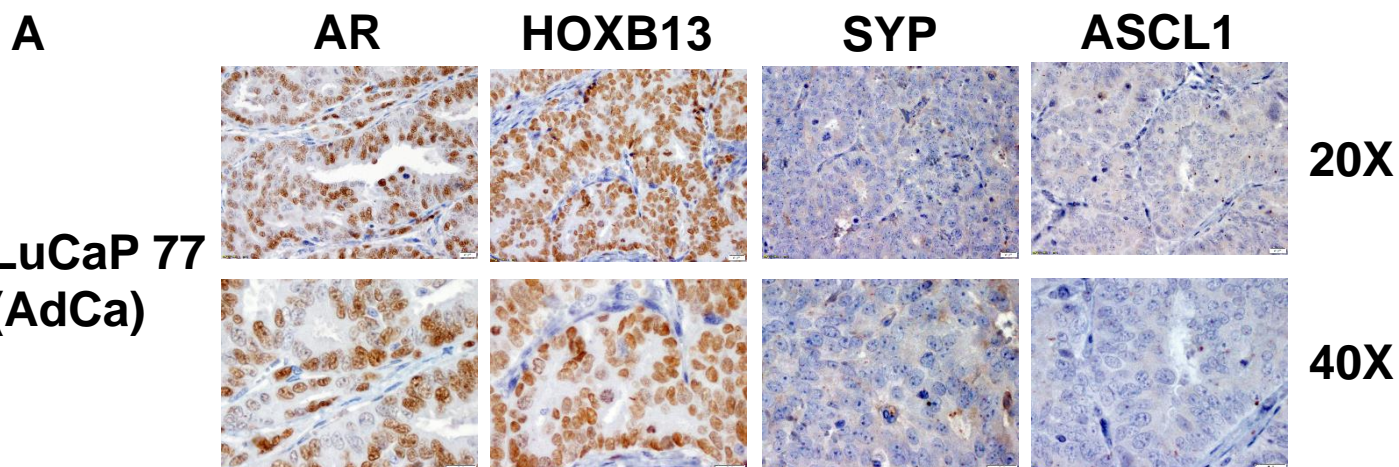


Supplemental Figure S2



Immunohistochemical staining of representative LuCaP adenocarcinoma (AdCa) LuCaP77 (A) and neuroendocrine prostate cancer (NEPC) LuCaP93 (B) showing tumor phenotype-specific expression of AdCa markers (AR and HOXB13) and NEPC markers (SYP and ASCL1). Quantified IHC data from the LuCaP tissue microarray shows that the majority of AdCa tumors express AdCa markers (C,D) and NEPC tumors express NEPC markers (E,F), mirroring the proteomic data. Mann-Whitney tests were performed on C-F. **** = $p < 0.0001$.