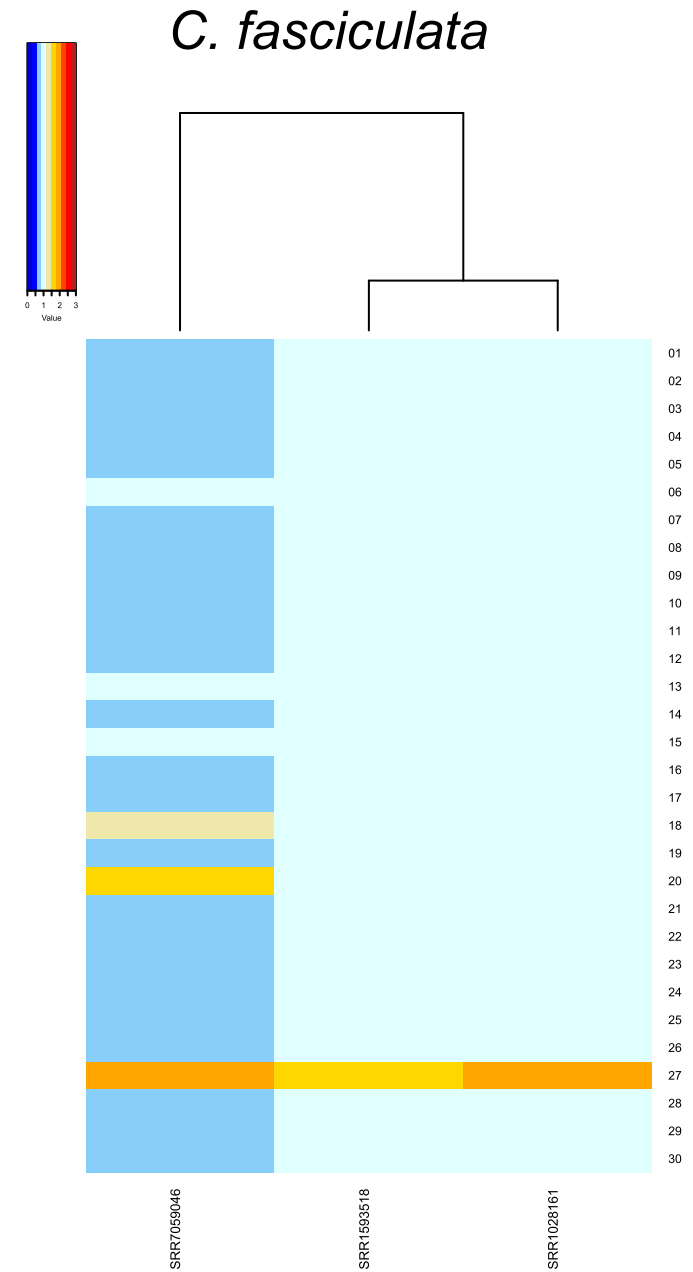
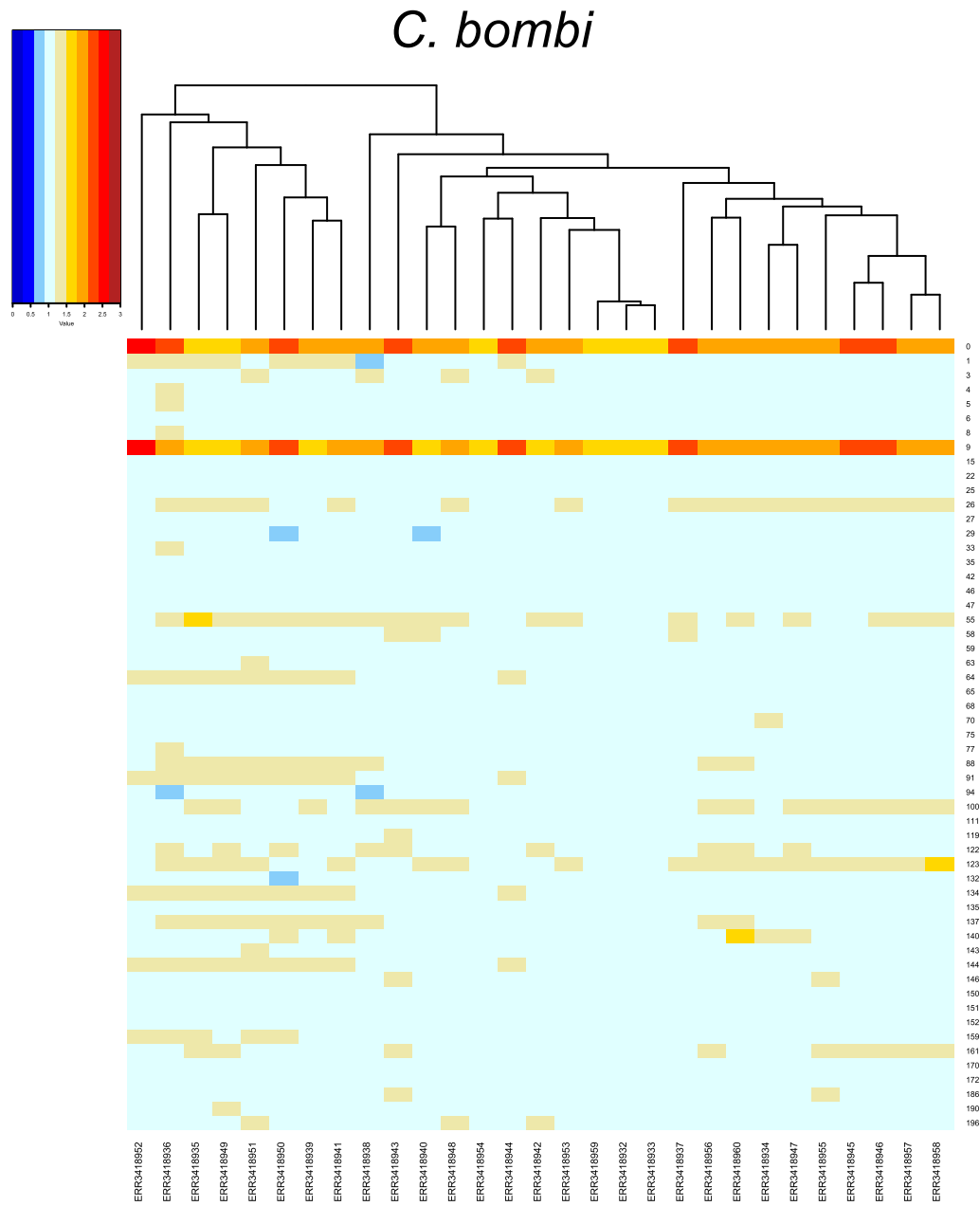
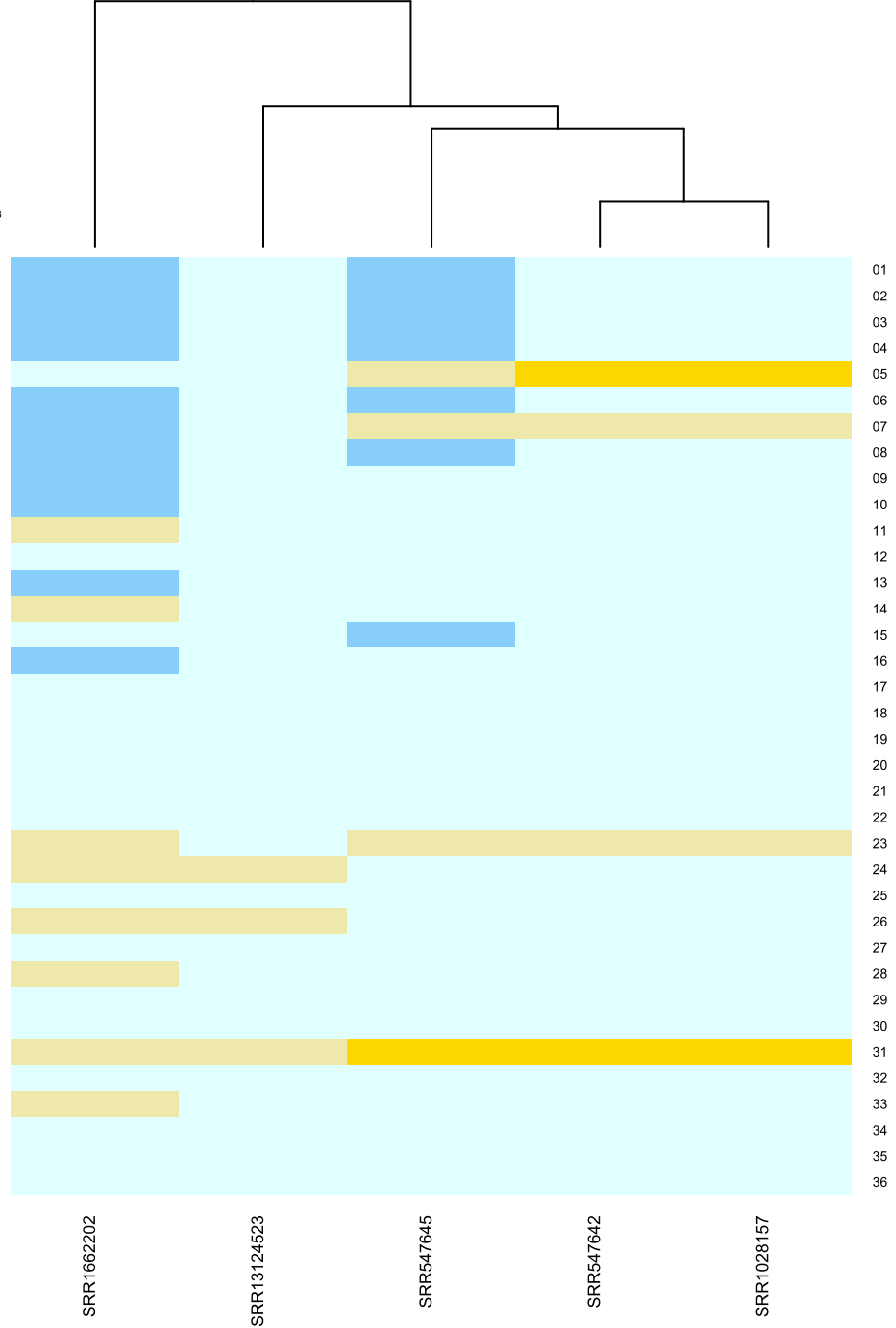
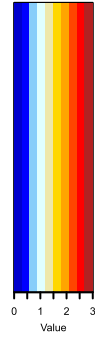


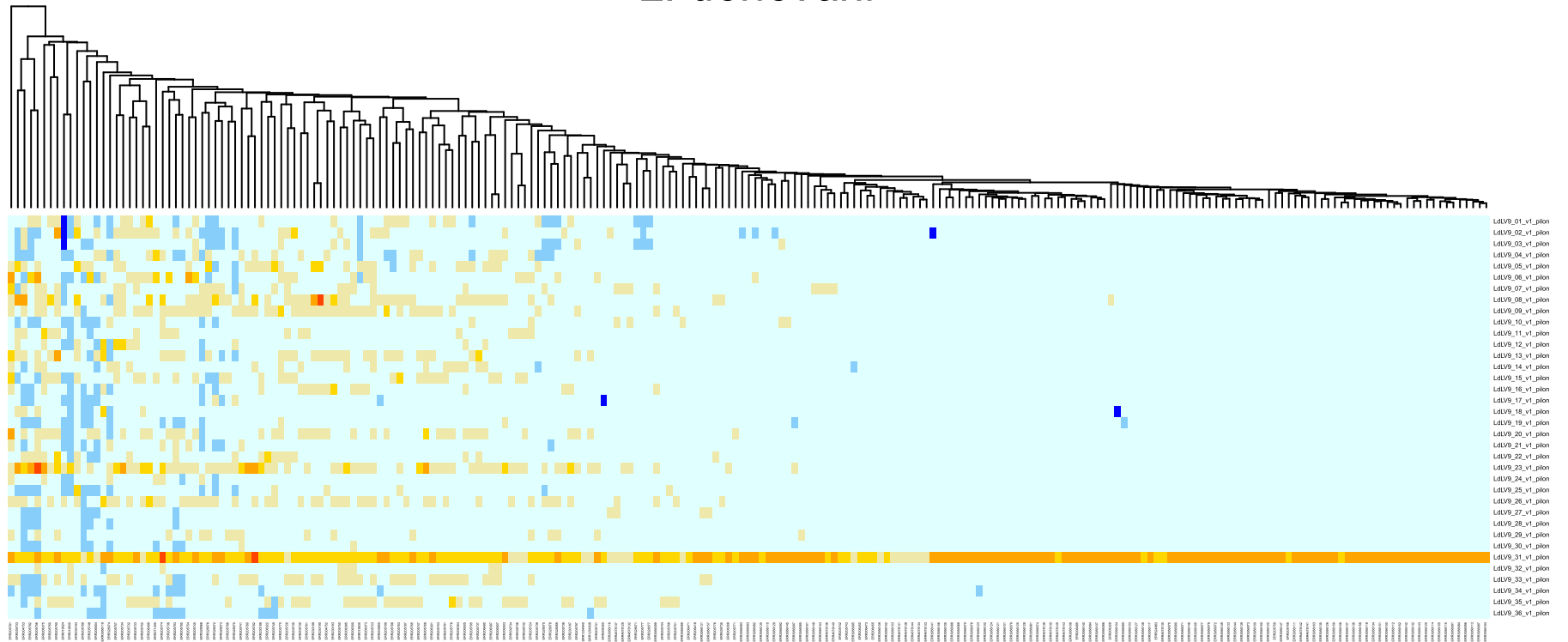
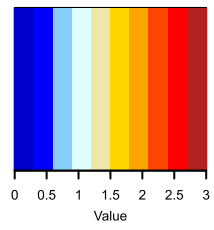
Supplemental_Fig_S1.pdf: Sample-by-sample CCNV Heatmaps in all isolates from all clades. Each line corresponds to a different chromosome/scaffold and each column to a different isolate. The chromosome copies are represented by a colour scale from dark-blue (low copy number) to dark-red (high copy number), where euploid chromosomes (~1 copy for each haploid genome copy) are in light blue. The dendrogram on top clusters the samples by UPGMA, based on the Manhattan distance of their chromosome copy numbers.



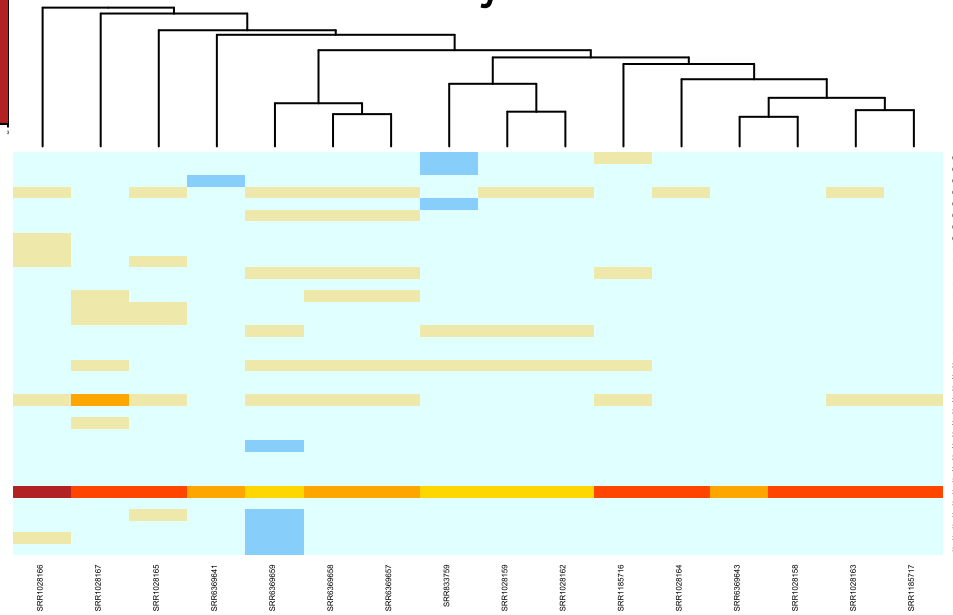
Endotrypanum



L. donovani

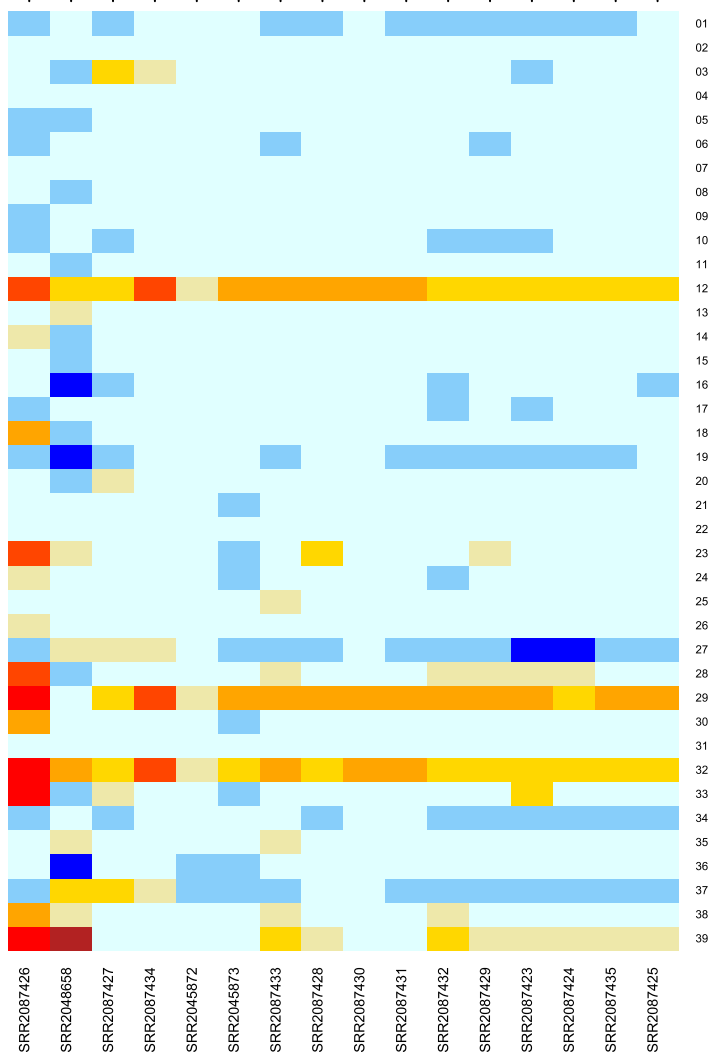
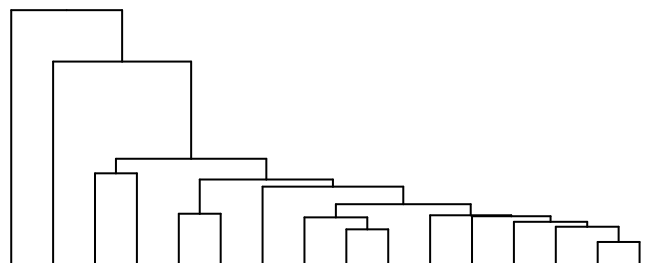


L. major

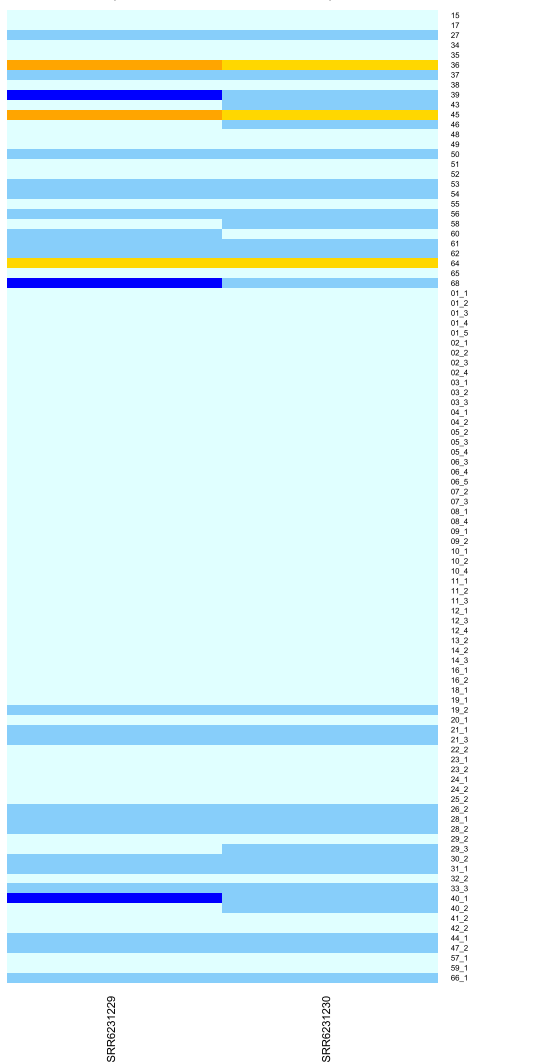
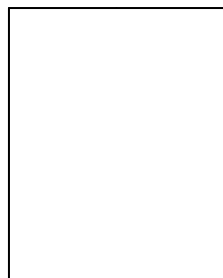




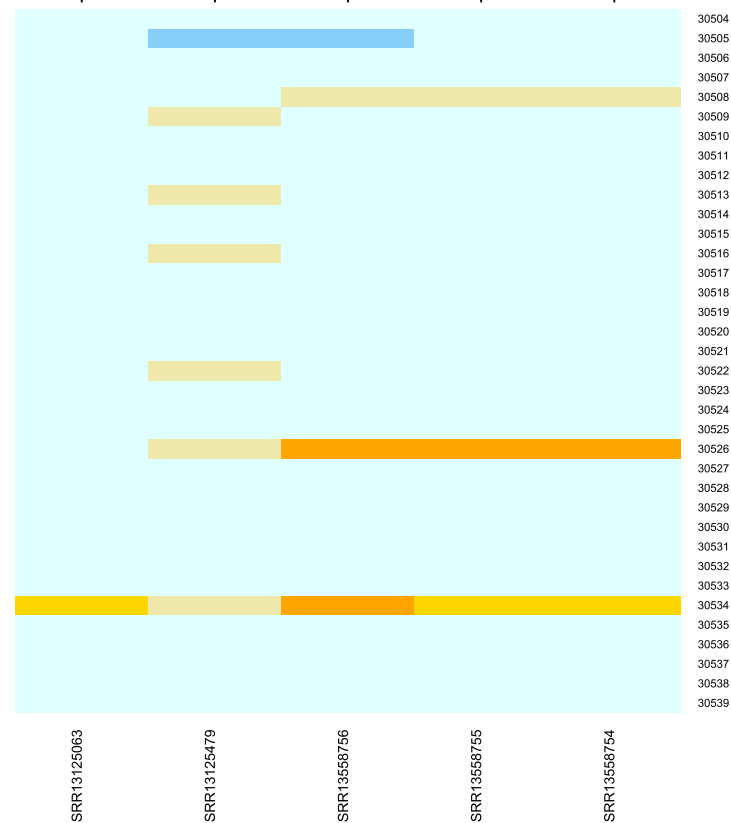
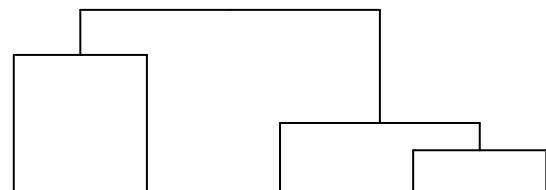
Leptomonas



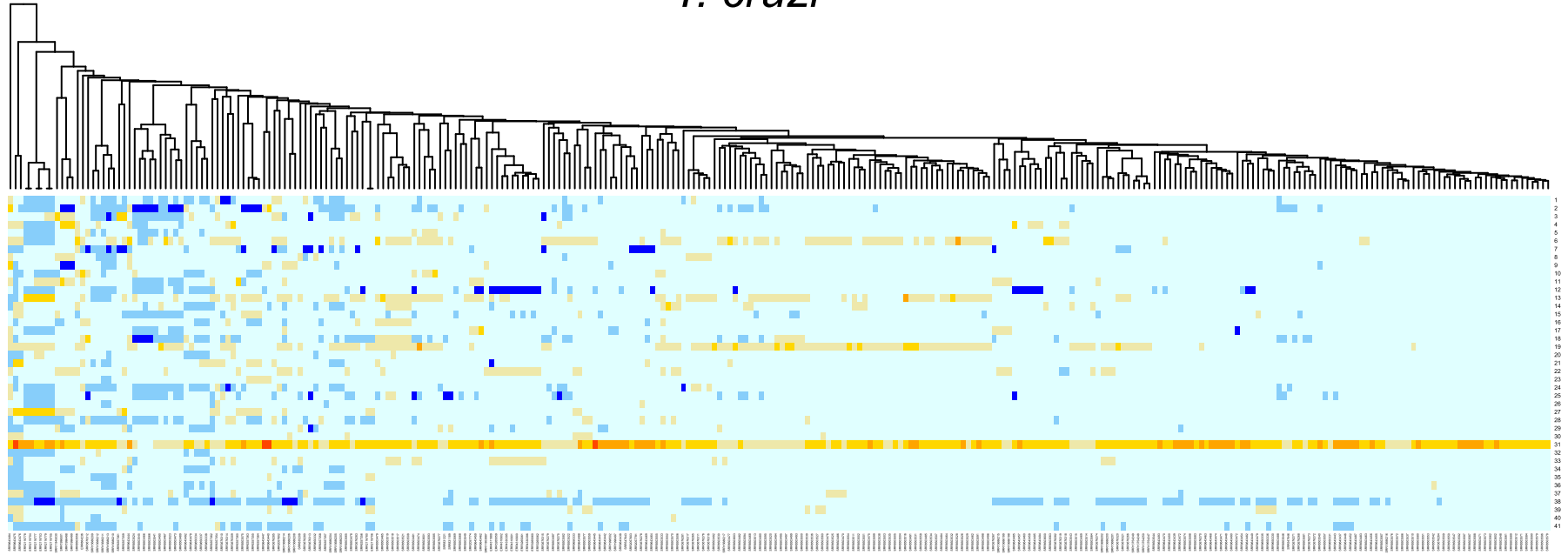
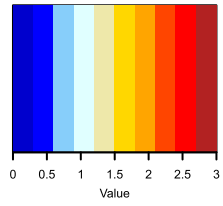
Paratrypanosoma



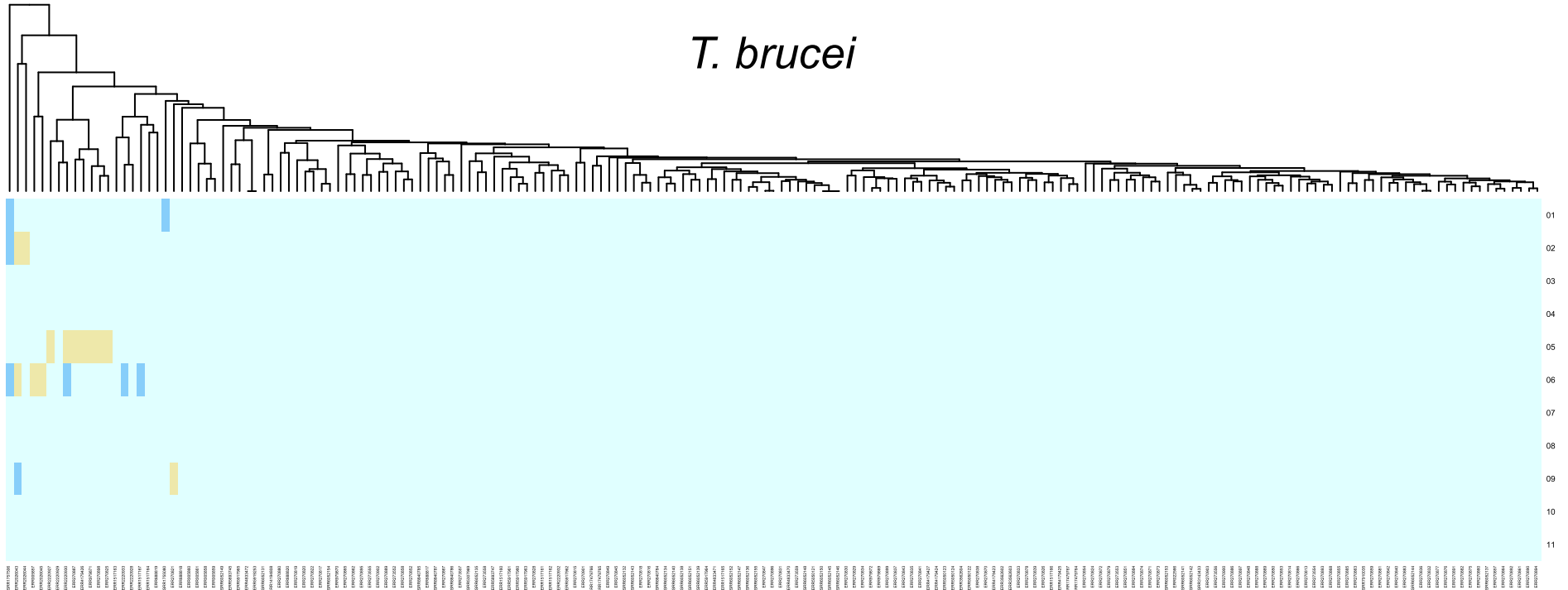
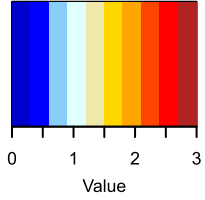
Porcisia



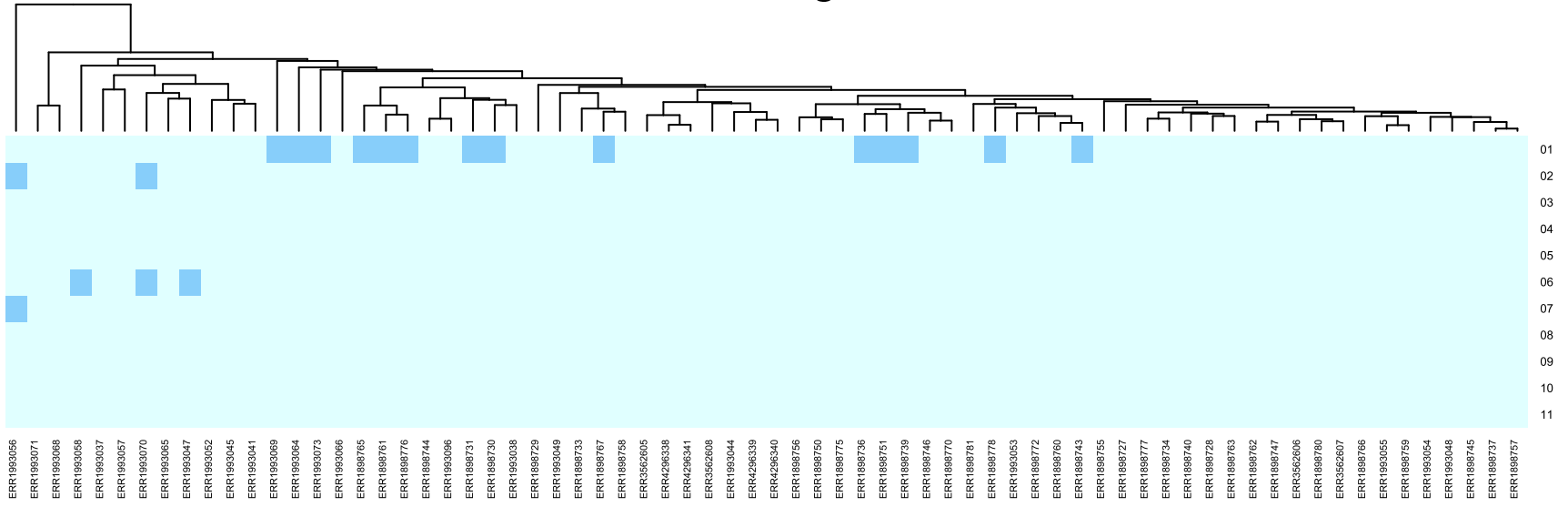
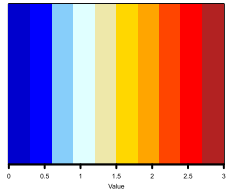
T. cruzi



T. brucei



T. congolense



T. vivax

