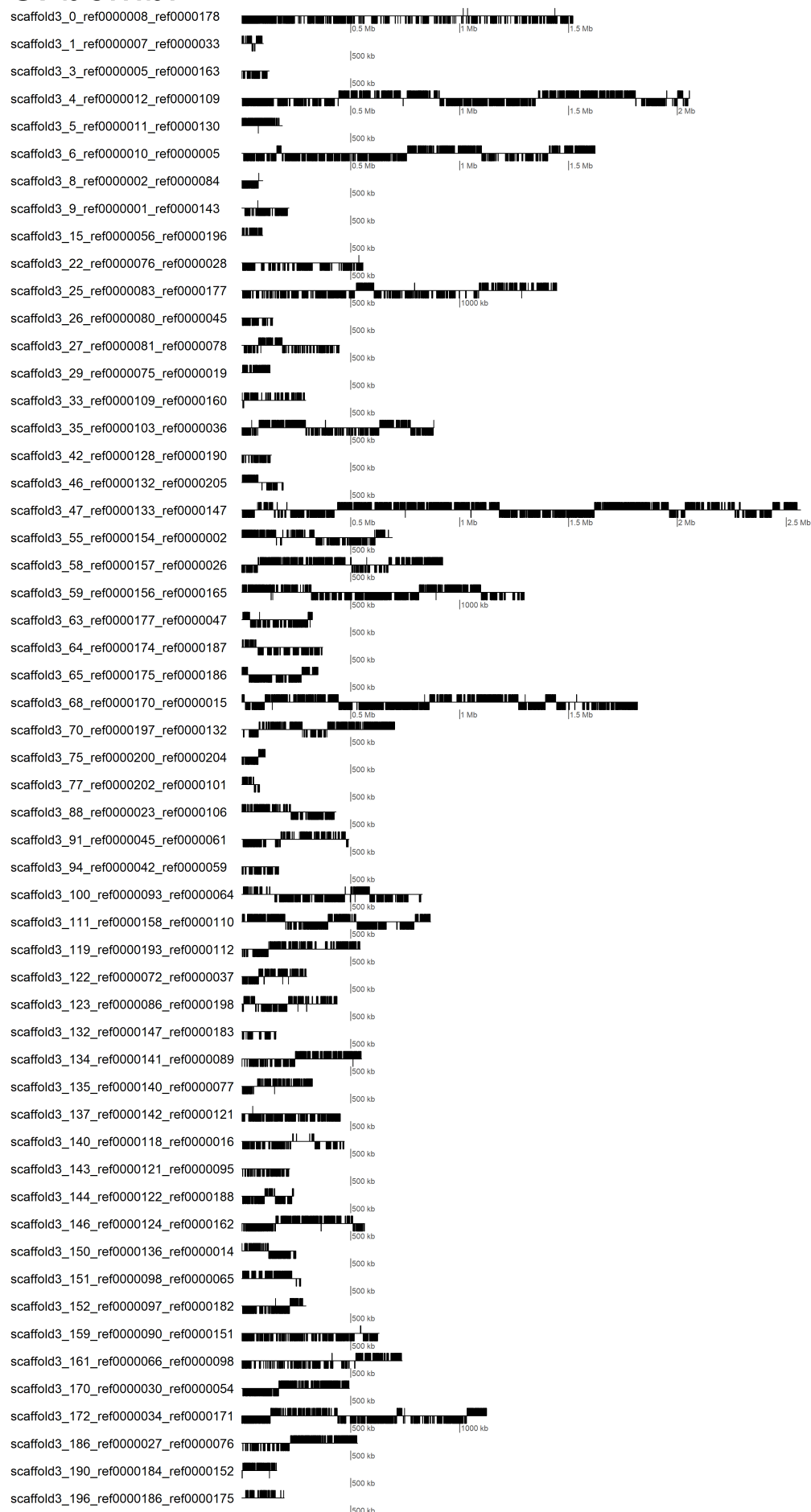
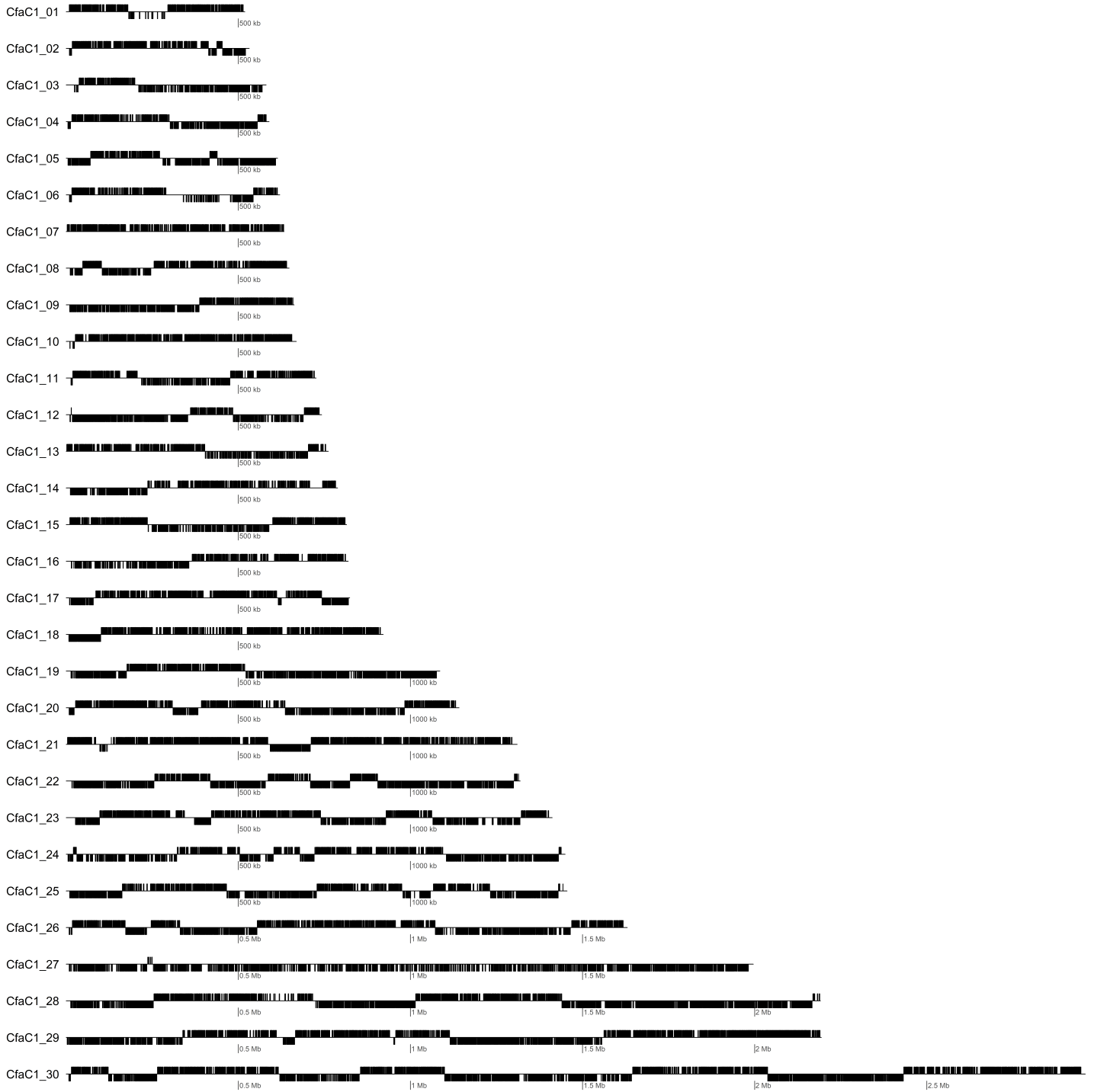


**Supplemental\_Fig\_S5.pdf: Gene disposition and orientation in Trypanosomatids chrs.** For each cade, chromosomes are drawn in scale. Genes are represented by black boxes and their orientation by the presence above (plus strand) or below (minus strand) of the chromosomal line.

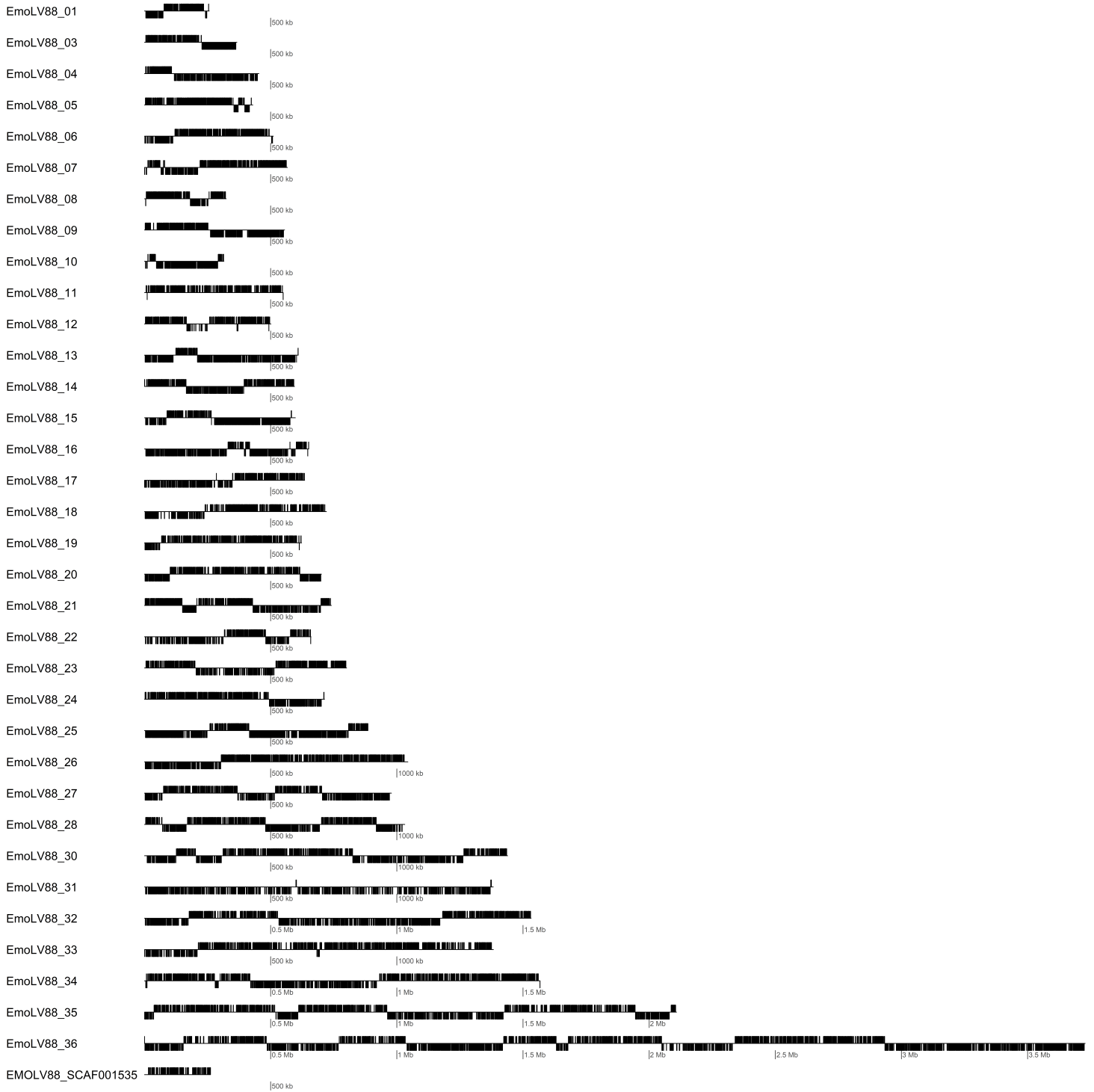
## *C. bombi*



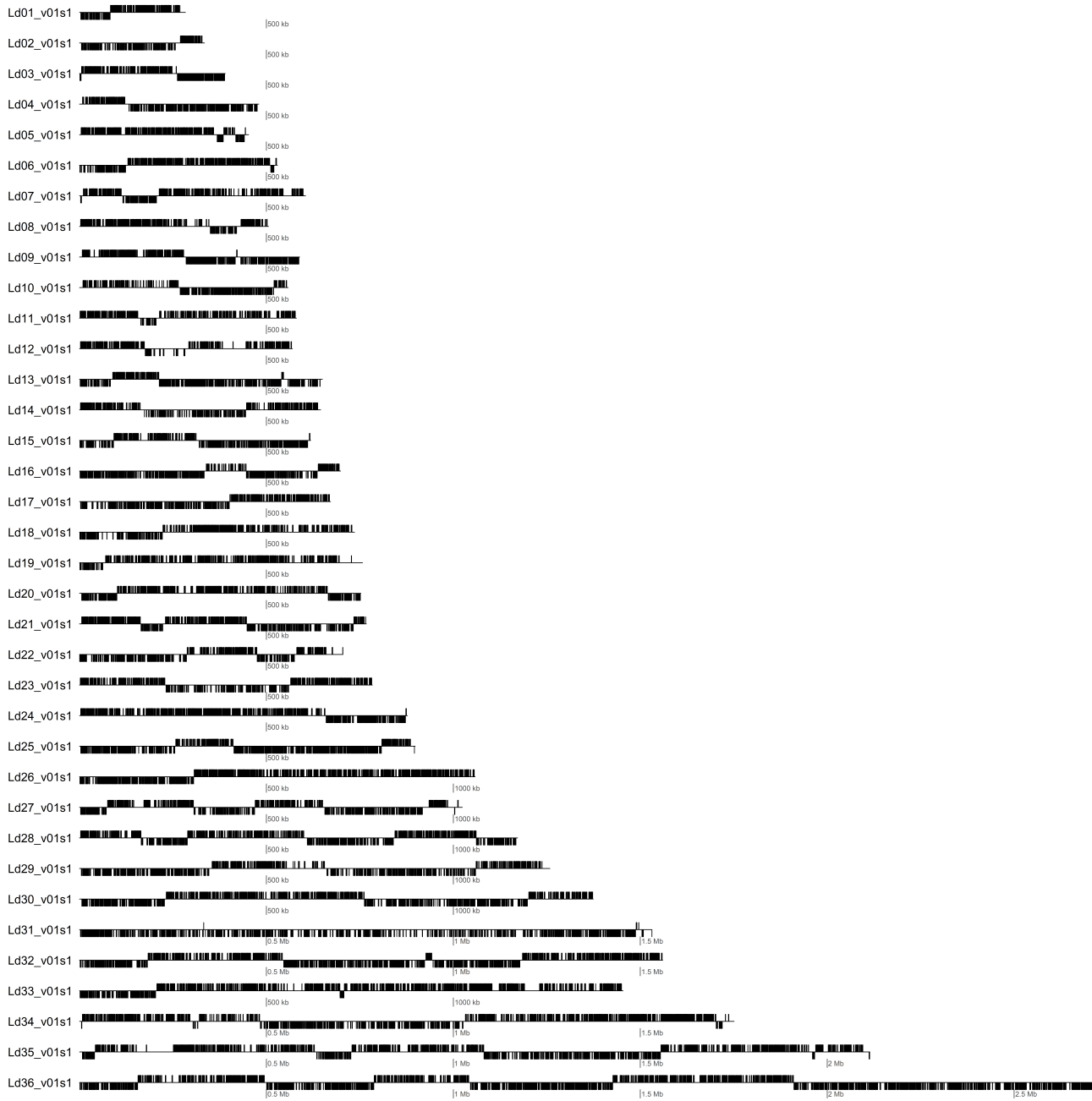
# *C. fasciculata*



# Endotrypanum

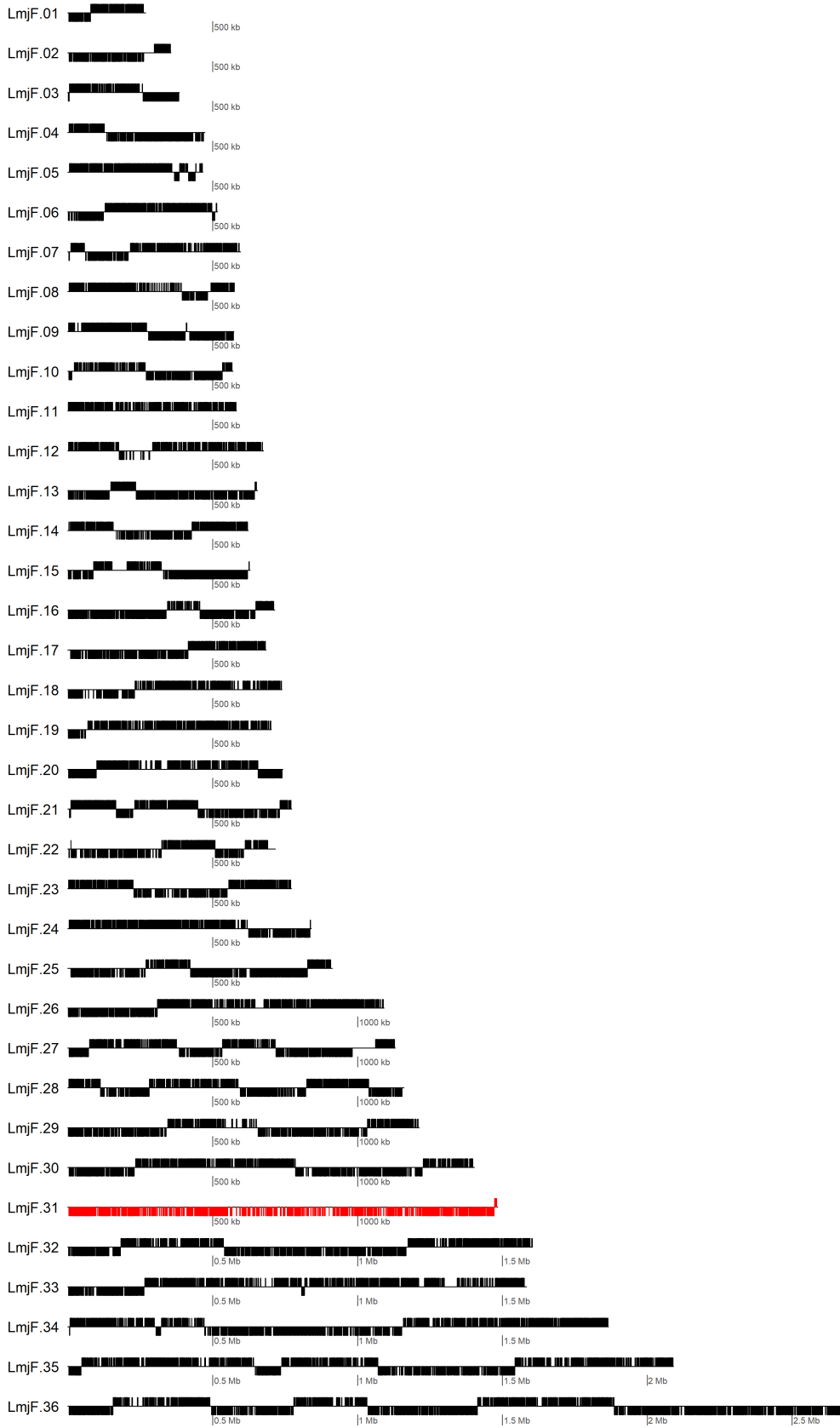


# *L. donovani*

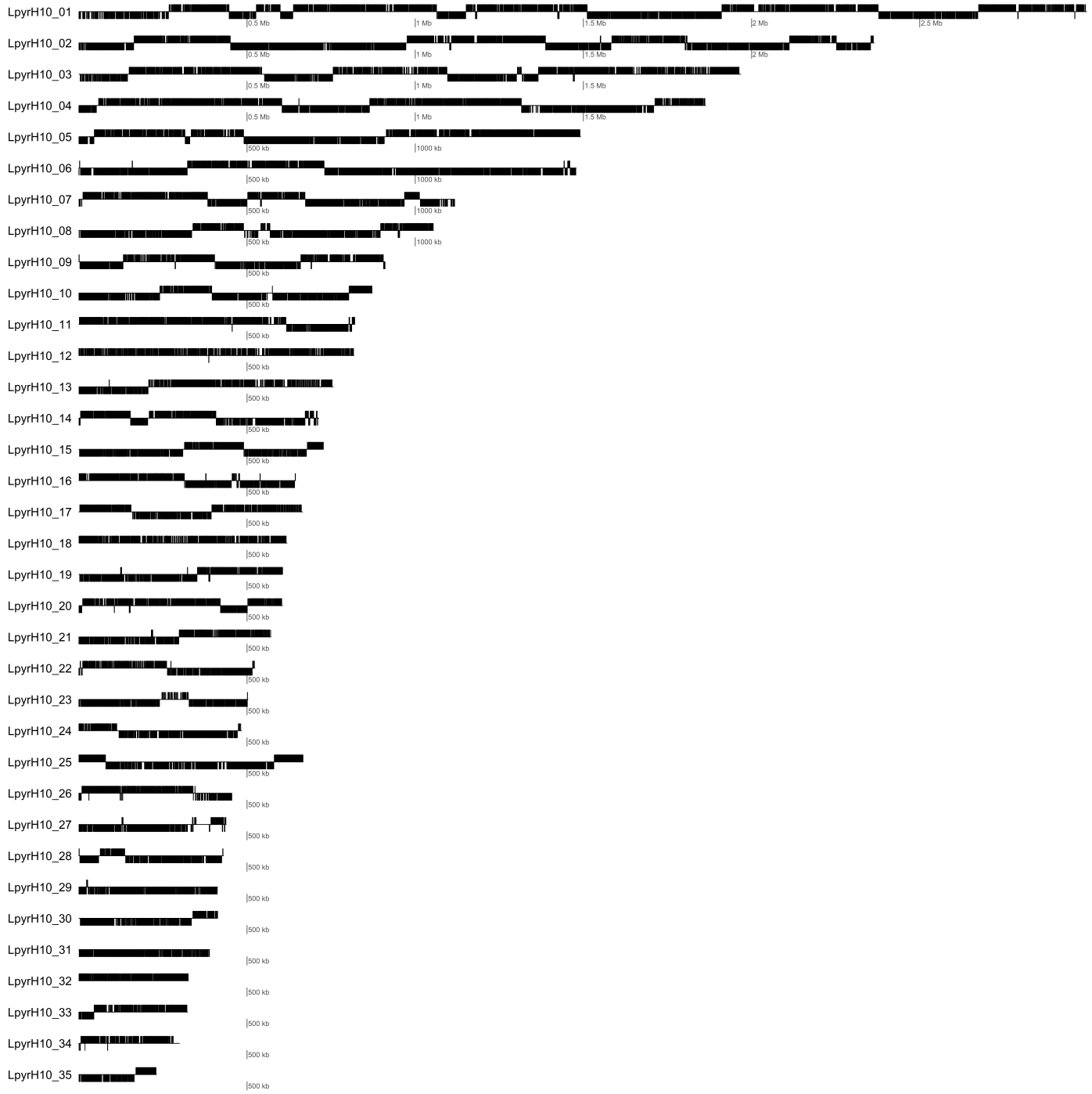




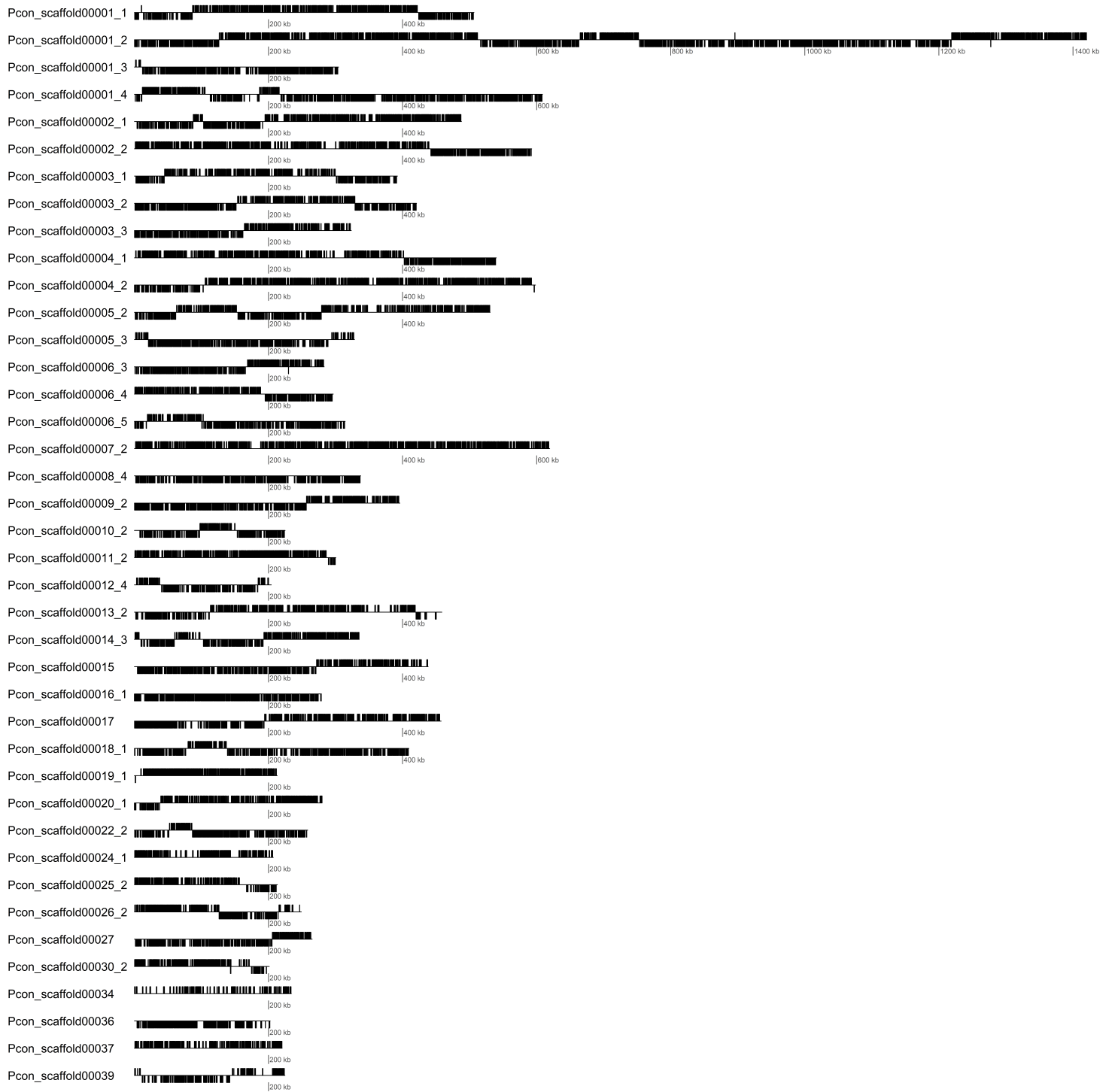
# *L. major*



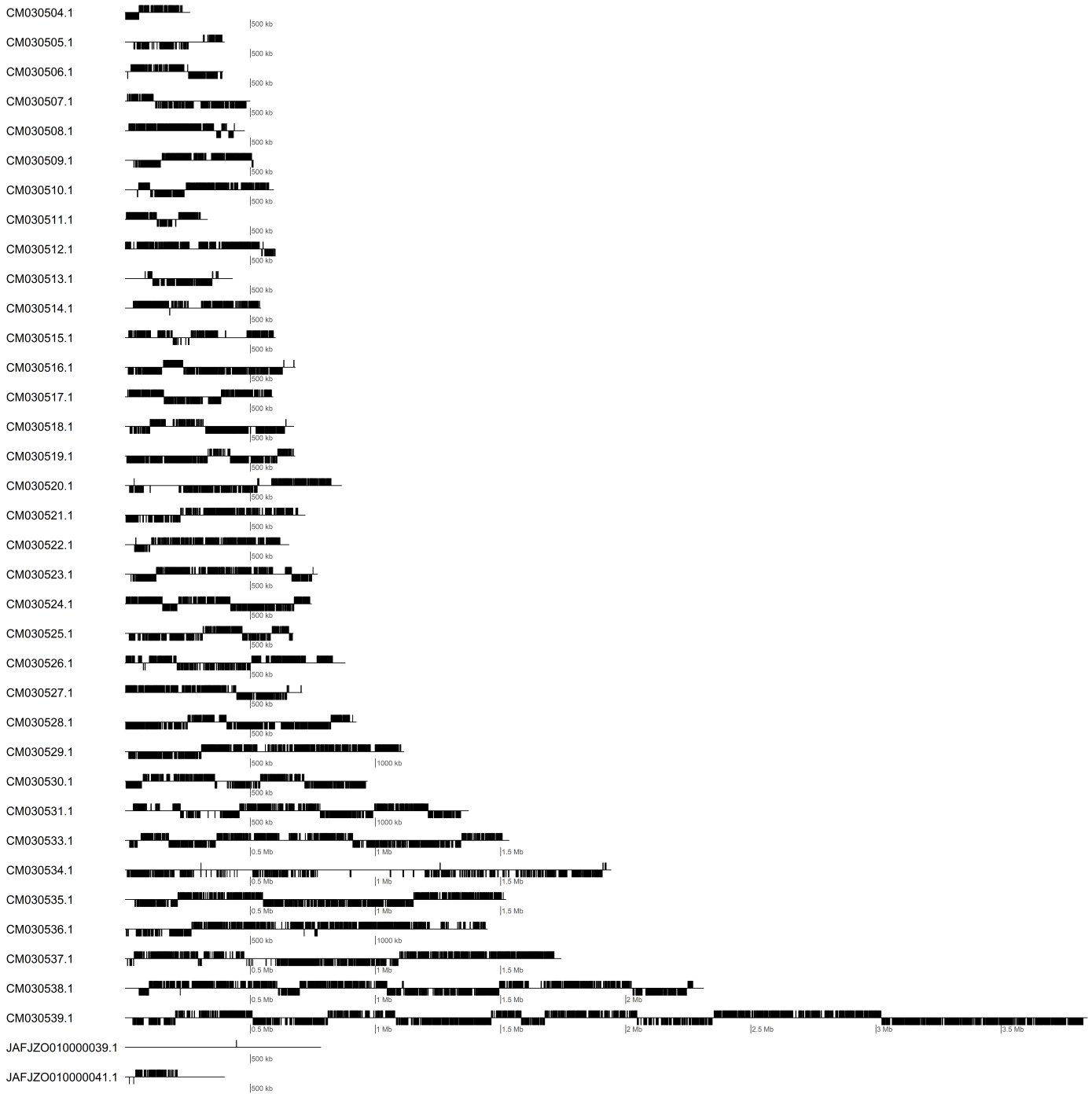
# Leptomonas



# *P. confusum*



# Porcisia



# *T. cruzi*

