

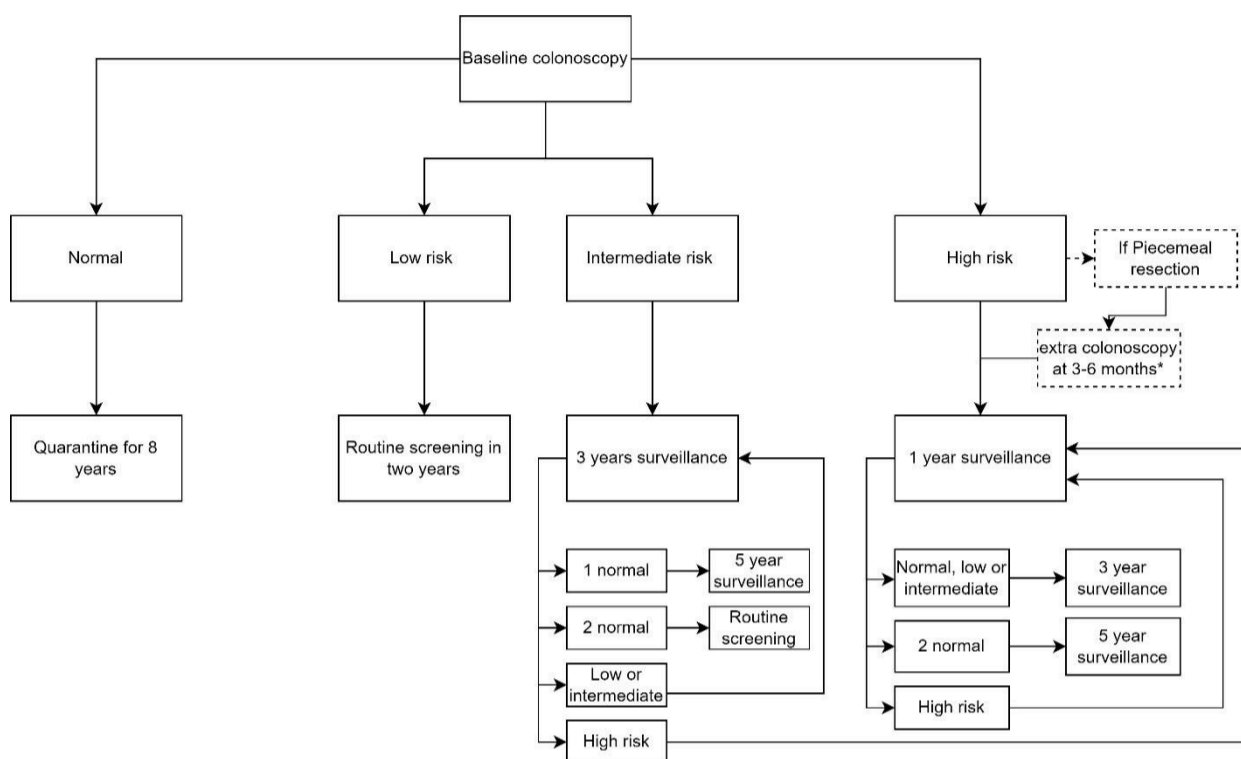
Supplementary material

Table S1 Registrations defined as baseline and surveillance colonoscopies using recommended medical codes.

	Register	Codes
Baseline colonoscopy	National Patient Register	KUJF3* (colonoscopy with/without biopsy) OR UXCD80 (CT colonography) OR ZPY1E* (Risk assessment 01, 02, 03) OR AFX02C (Clean colon after complete colonoscopy) OR AFX02D (Clean colon after CT colonography)
	National Pathology Register	OR Pathological colorectal specimen registered
Surveillance colonoscopy	National Patient Register	KUJF3* OR ZPY1E* OR (KJFA15 or KJFA55A or KJFA55B or KJGA05 or KJGA52A or KJGA52B) & (DZ018B or P01601)
	National Pathology Register	Pathological colorectal specimen registered

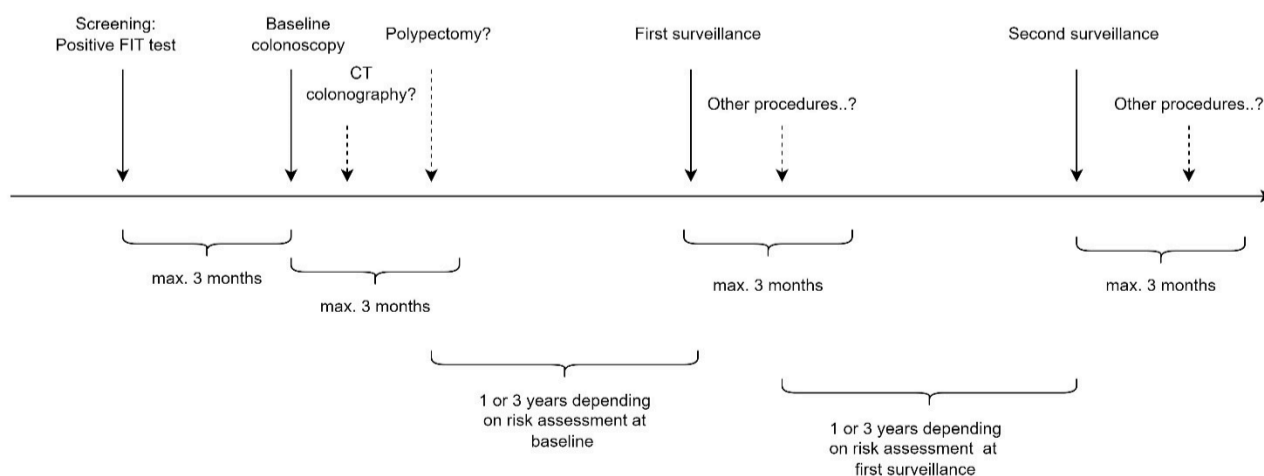
Supplementary material

Fig. S1 Recommendations for follow-up and adenoma surveillance in the Danish FIT-based colorectal cancer-screening program 2014-2023.



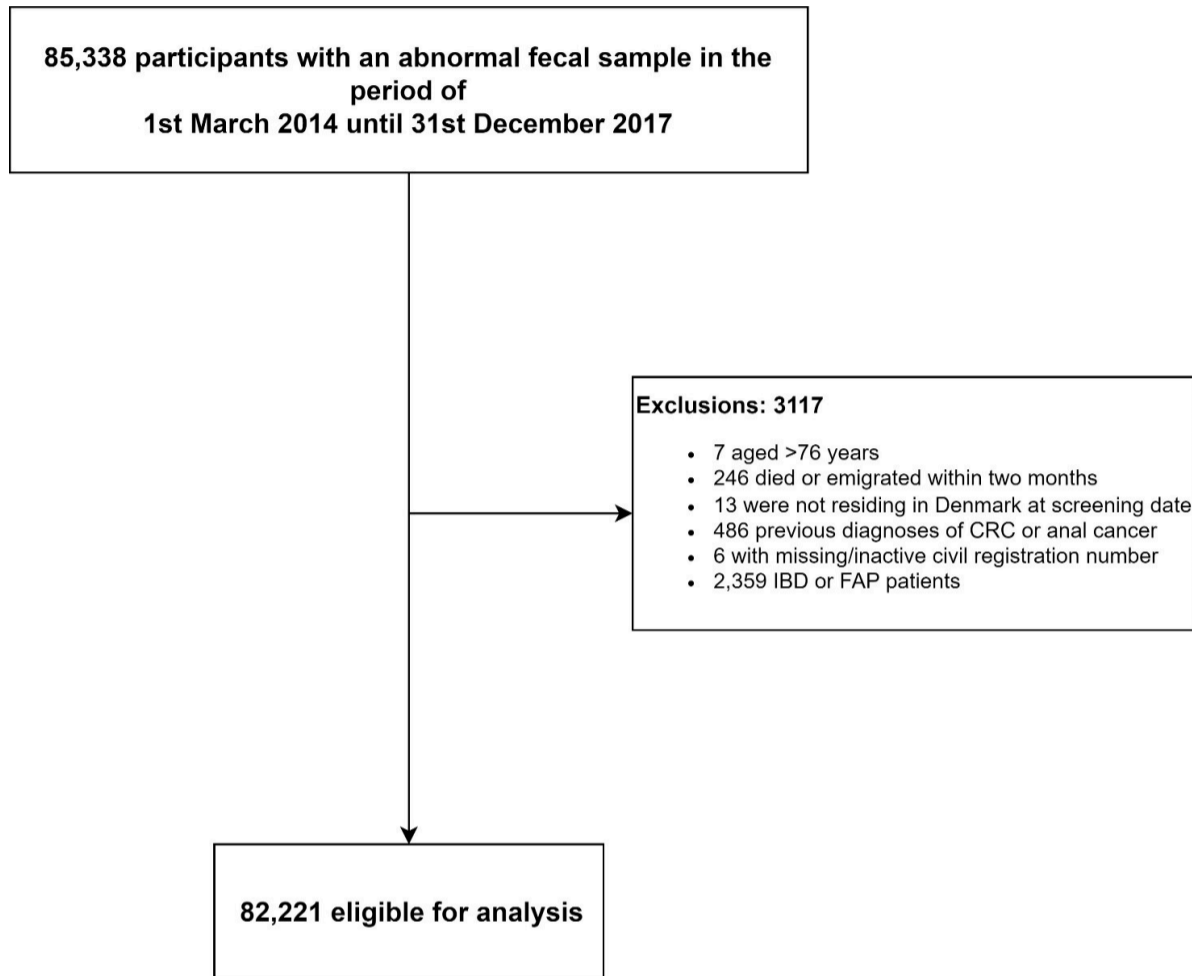
* the endoscopist may choose to perform a colonoscopy after 3-6 months to check if resection was complete

Fig. S2 Definition of diagnostic periods around baseline and surveillance colonoscopies in this study.



Supplementary material

Fig. S3 Study flowchart.



Abbreviations: CRC - Colorectal cancer, IBD - Inflammatory Bowel disease, FAP - Familial Adenomatous Polyposis

Supplementary material

Fig. S4 Cumulative proportions with the first endoscopic procedure performed among all FIT-positive individuals and FIT-positive without a baseline colonoscopy.

