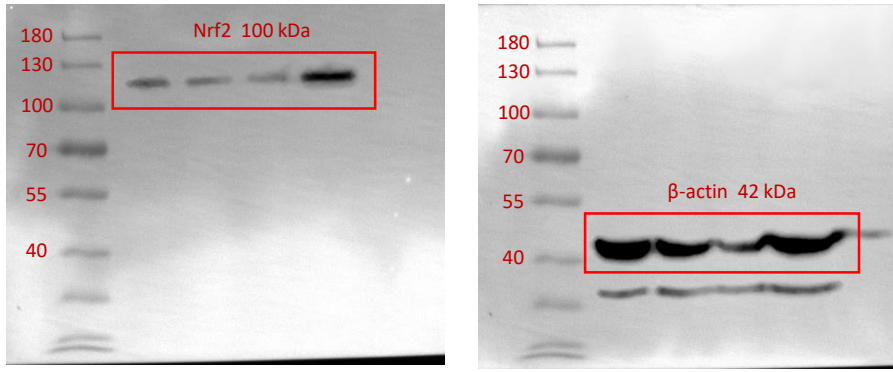
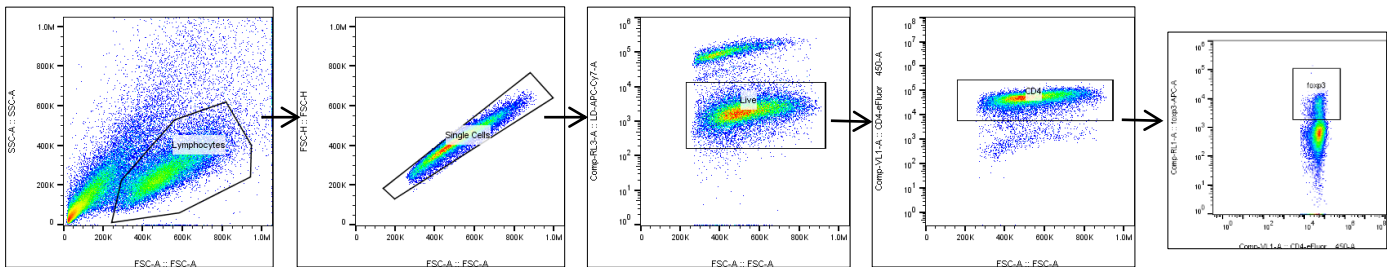
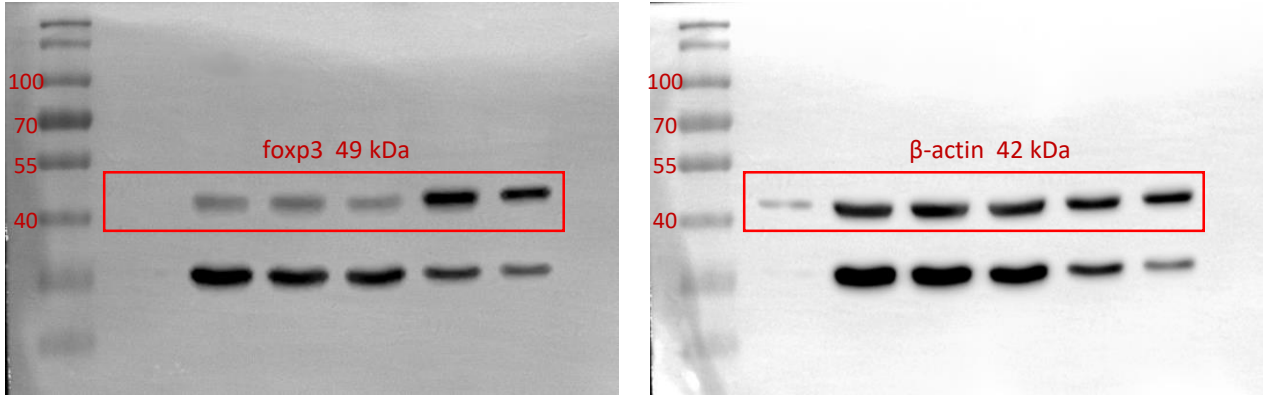


Original blot images corresponding to the Fig. 5a in the manuscript.



Original blot images corresponding to the Fig. 5e in the manuscript.



Gating strategy for flow cytometry analysis used in this study for Fig.5d and Fig.6d.

Gating strategy used to define the population of foxp3<sup>+</sup> T cells subsets from Naive CD4<sup>+</sup> T cells after induction.