

Fig. S1

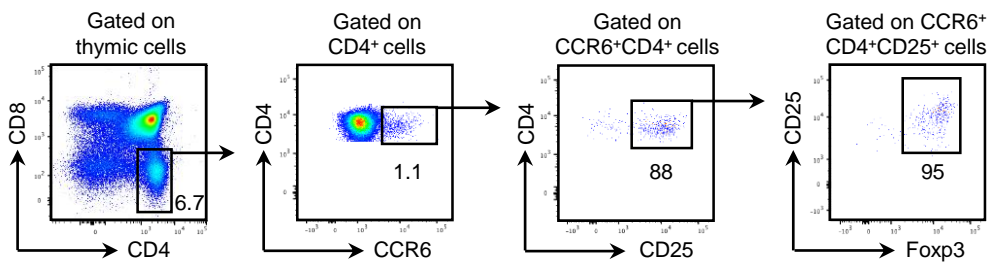


Fig. S2

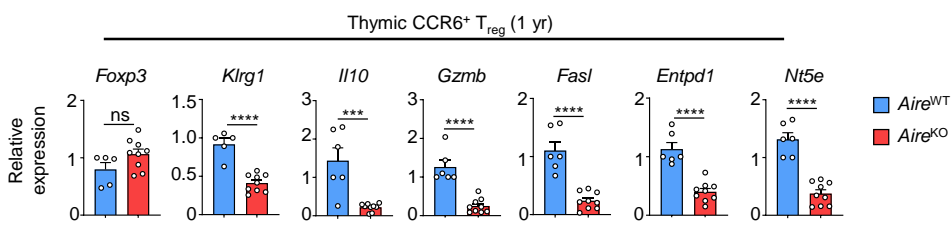


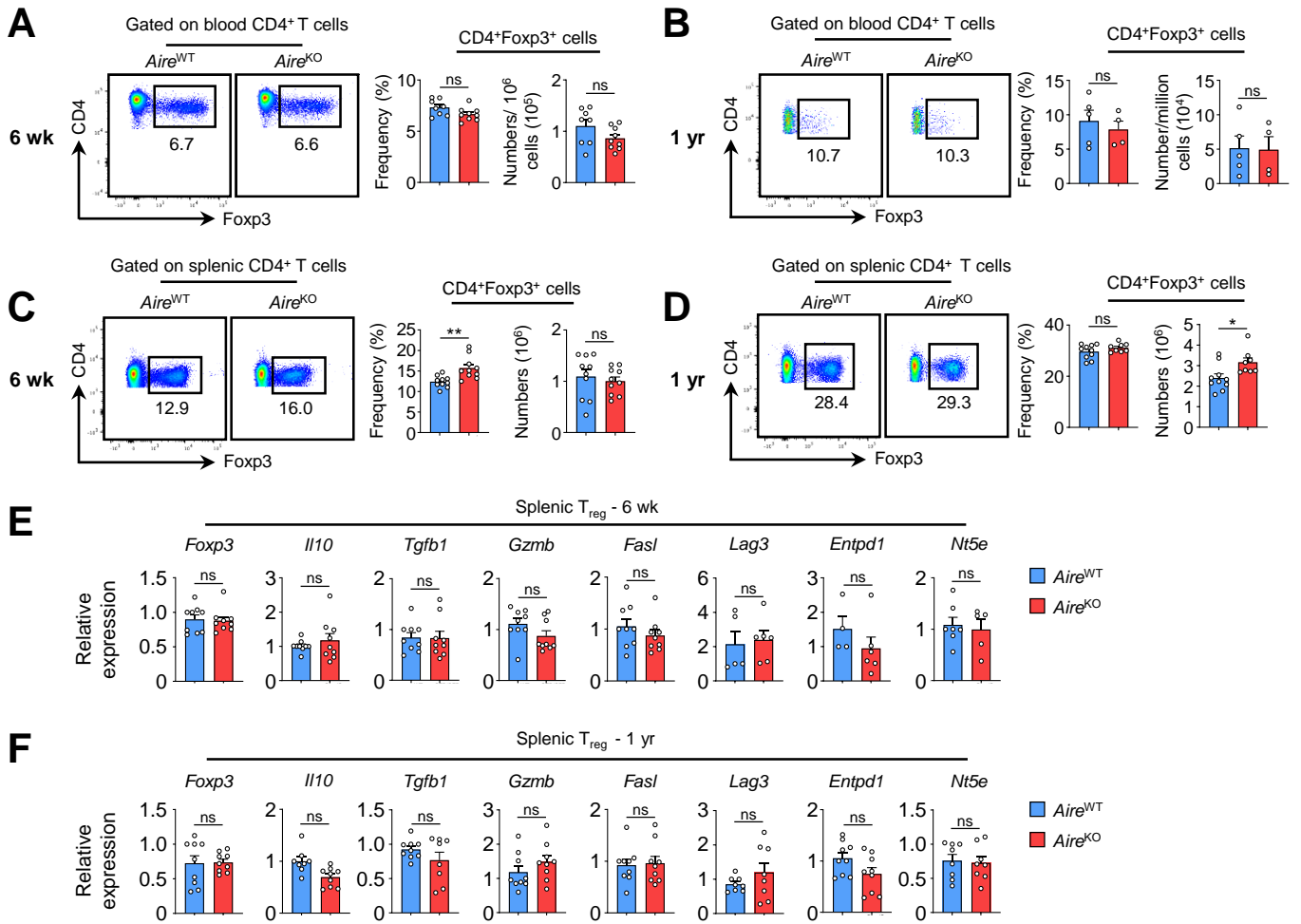
Fig. S3

Fig. S4

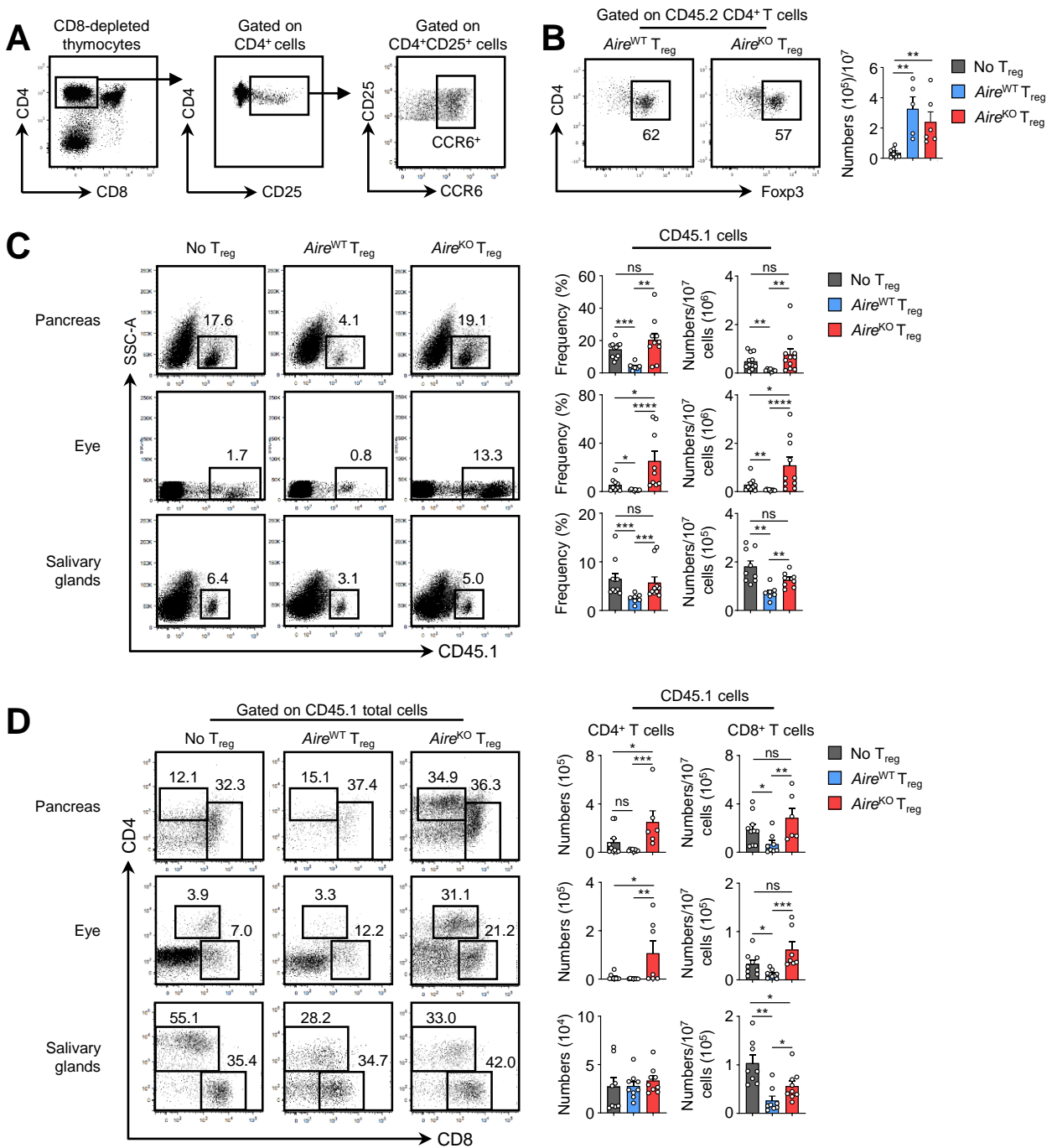
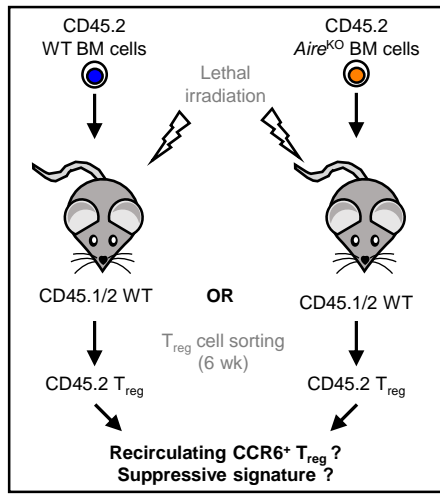
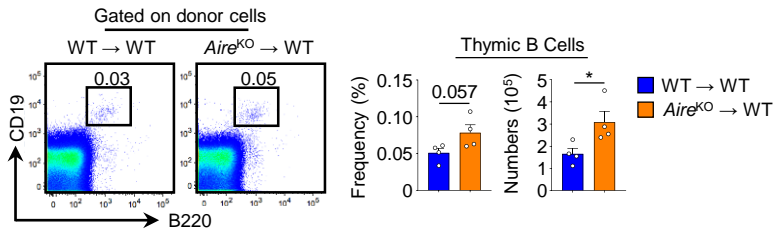


Fig. S5

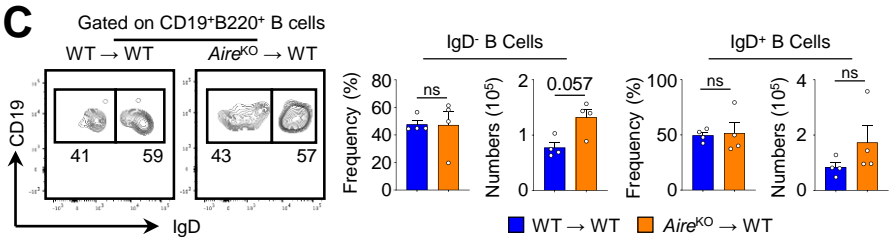
A



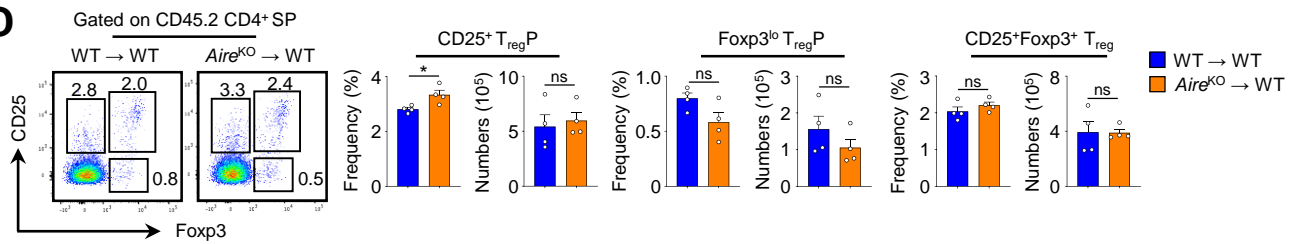
B



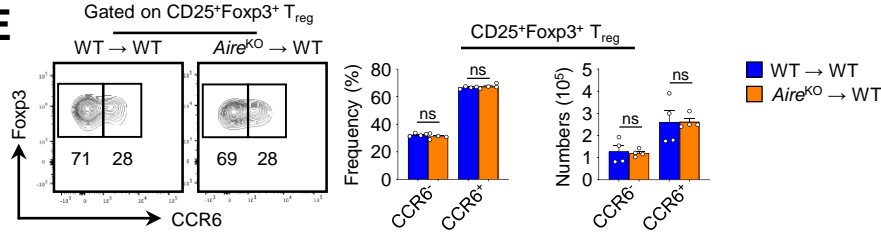
C



D



E



F

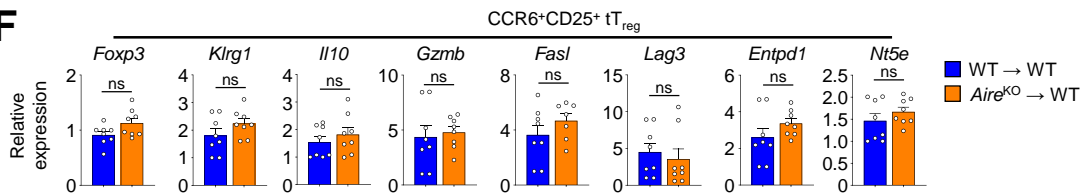


Fig. S6

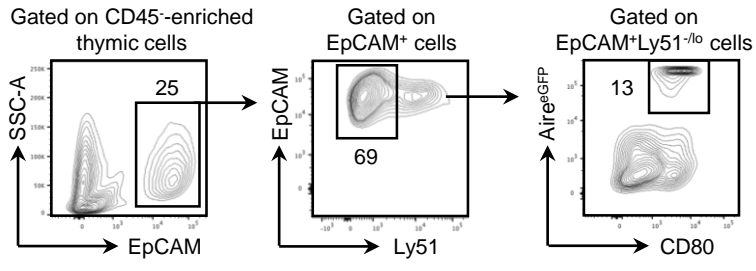


Fig. S7

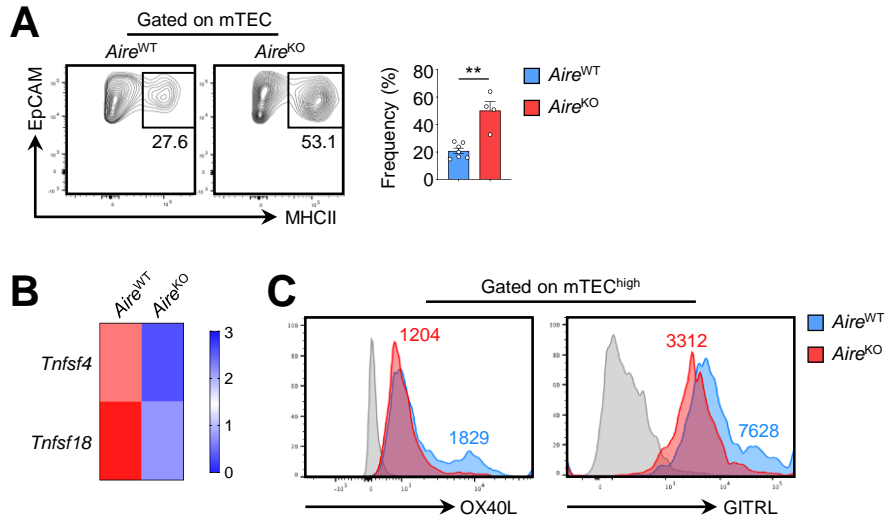


Table S1

Gene	<i>Aire</i>^{WT} mice	<i>Aire</i>^{KO} mice
<i>Il10</i>	3.09 ± 0.44	0.31 ± 0.19
<i>Gzmb</i>	25.57 ± 6.90	4.83 ± 1.84
<i>Fasl</i>	1.35 ± 0.66	0.92 ± 0.15
<i>Lag3</i>	4.29 ± 0.53	2.07 ± 0.45
<i>Entpd1</i>	10.57 ± 0.19	5.43 ± 0.38
<i>Nt5e</i>	69.74 ± 11.42	59.41 ± 7.12
<i>Prdm1</i>	18.78 ± 3.56	2.84 ± 0.06
<i>Klrg1</i>	60.16 ± 9.26	12.96 ± 2.67
<i>Tigit</i>	77.14 ± 16.33	23.54 ± 1.83
<i>Ctla4</i>	259.10 ± 19.43	156.50 ± 2.15
<i>Lgals1</i>	421.5 ± 20.12	244.0 ± 3.59
<i>Tbx21</i>	5.22 ± 1.64	2.2 ± 0.32
<i>Irf4</i>	20.71 ± 1.10	13.22 ± 1.40
<i>Pparg</i>	2.54 ± 0.09	0.87 ± 0.39
<i>Id2</i>	192.5 ± 25.10	34.59 ± 2.99
<i>Cxcr3</i>	58.30 ± 14.08	14.94 ± 2.71
<i>Ccr4</i>	35.47 ± 5.00	11.08 ± 0.12
<i>Ccr8</i>	256.6 ± 35.04	136.7 ± 3.35
<i>Ccr1</i>	3.67 ± 1.31	0.34 ± 0.13
<i>Ccr2</i>	39.94 ± 2.88	7.26 ± 0.64

Table S2

Antibody	Clone	Fluorochrome	Supplier	Dilution
B220	RA3-6B2	PerCP	Biolegend	1/200
CD45.1	A20	BV421	Biolegend	1/600
CD45.1	A20	PerCP Cy5.5	BD Biosciences	1/200
CD45.2	104	AF488	Biolegend	1/200
CD4	RM4.5	FITC	BD Biosciences	1/200
CD4	RM4.5	APC	Biolegend	1/200
CD4	GK1.5	APC Cy7	Invitrogen	1/200
CD4	RM4.5	BV421	BD Biosciences	1/200
CD8 α	53.6.7	PeCy7	BD Biosciences	1/600
CD8 α	53.6.7	PB	BD Biosciences	1/200
CD25	PC61	PerCP Cy5.5	BD Biosciences	1/200
CD25	PC61	APC	Biolegend	1/200
CD25	PC61	PeCy7	Biolegend	1/400
CCR6	29-2L17	PE	Biolegend	1/300
CCR6	29-2L17	PerCP Cy5.5	Biolegend	1/200
CD44	IM7	PerCP Cy5.5	eBioscience	1/200
CD19	1D3	PeCy7	BD Biosciences	1/300
CD69	H1.2F3	PE	Biolegend	1/300
IA/IE	M5/114.15.2	BV605	BD Biosciences	1/1000
GITRL	YGL386	PE	Biolegend	1/200
OX40L	RM134L	APC	eBioscience	1/200
CD80	16-10A1	PerCP Cy5.5	Biolegend	1/200
EpCAM	G8.8	PeCy7	Biolegend	1/3000
Foxp3	FKJ-16s	PE	eBioscience	1/200
Foxp3	FKJ-16s	APC	Invitrogen	1/200
Foxp3	FKJ-16s	AF488	Invitrogen	1/150
IgD	11-26c.2a	PE	BD Biosciences	1/300
Ly51	6C3	PE	Biolegend	1/3000
UEA1		FITC	Vector Laboratories	1/800

Table S3

Primers	Sequence	Tm (°C)	Amplicon size (bp)	Accession number
<i>Actin</i> - Forward	CAGAAGGAGATTACTGCTCTGGCT	58.2	93	NM_007393.5
<i>Actin</i> - Reverse	GGAGCCACCGATCCACACA	59.9		
<i>Foxp3</i> - Forward	CCCACCTACAGGCCCTTCTC	61.1	71	NM_001199347.1 NM_001199348.1 NM_054039.2
<i>Foxp3</i> - Reverse	GGCATGGGCATCCACAGT	58.4		
<i>Klrg1</i> - Forward	CGAGGAATGGTAGCCACTGTTAC	57.3	163	NM_016970
<i>Klrg1</i> - Reverse	CCGATCCAGTAAAAGTCCTGACC	57.1		
<i>Il10</i> – Forward	GAATTCCCTGGGTGAGAAGC	55.7	105	NM_010548.2
<i>Il10</i> – Reverse	CTCTTCACCTGCTCCACTGC	58.1		
<i>Gzmb</i> - Forward	GAAAACAATGAAAAGCAGCTAACTACA	56.9	69	NM_013542.3
<i>Gzmb</i> - Reverse	TCTAGGGACGATGGGTAATCAGA	56.3		
<i>Fasl</i> - Forward	TCAGTCTTGCAACAACCAGC	55.9	310	NM_001205243.1 NM_010177
<i>Fasl</i> - Reverse	AGACAATATTCCTGGTGCCC	54.7		
<i>Lag3</i> - Forward	CTGGGACTGCTTTGGGAAG	55.9	167	NM_008479.2
<i>Lag3</i> - Reverse	GGTTGATGTTGCCAGATAACCC	56.2		
<i>Entpd1</i> - Forward	TACCACCCCATCTGGTCATT	55.7	168	NM_001304721.1 NM_009848.4
<i>Entpd1</i> - Reverse	GGACGTTTTGTTGGTTGGT	56.0		
<i>Nt5e</i> - Forward	CAAATCCCACACAACCACTG	54.3	158	NM_011851.4
<i>Nt5e</i> - Reverse	TGCTCACTTGGTCACAGGAC	56.9		
<i>Tgfb1</i> - Forward	CAGACATTCGGGAAGCAGTG	57.9	145	NM_011577.2
<i>Tgfb1</i> - Reverse	AGCCGGTTACCAAGGTAACG	57.3		