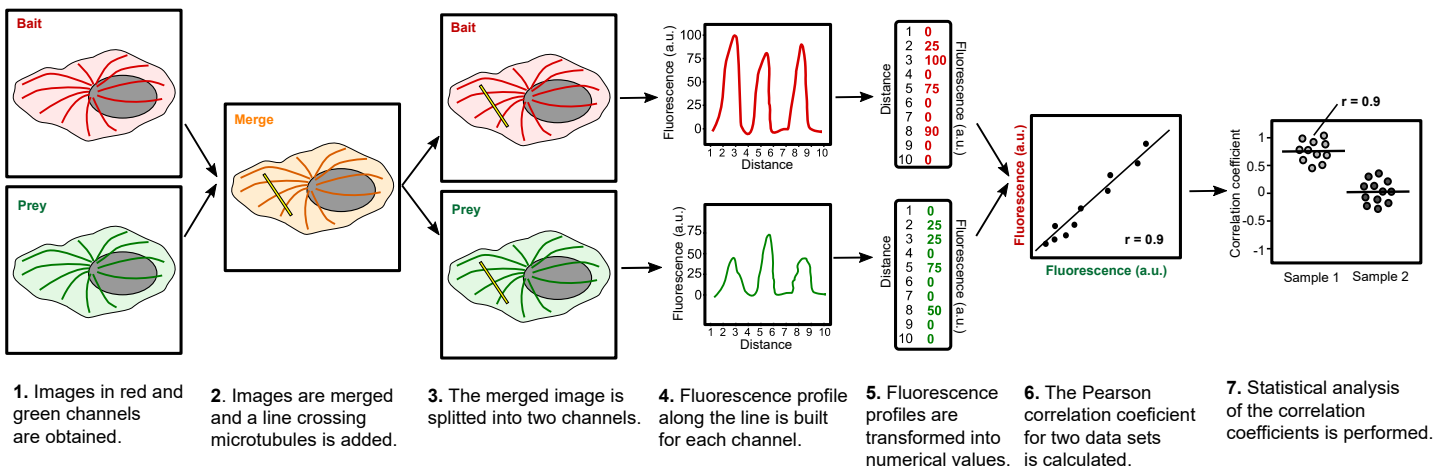
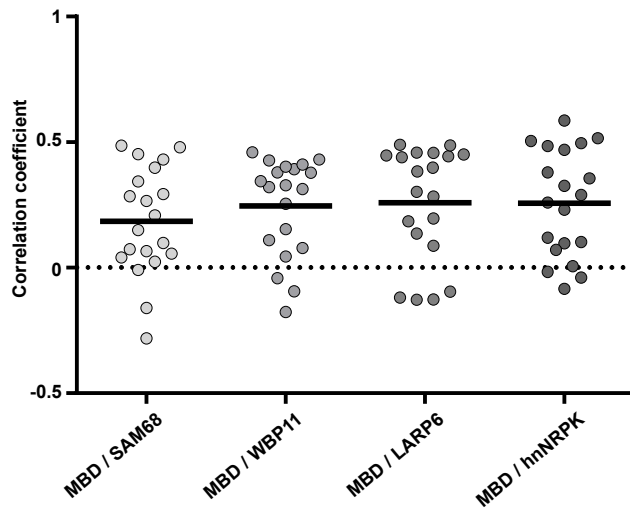
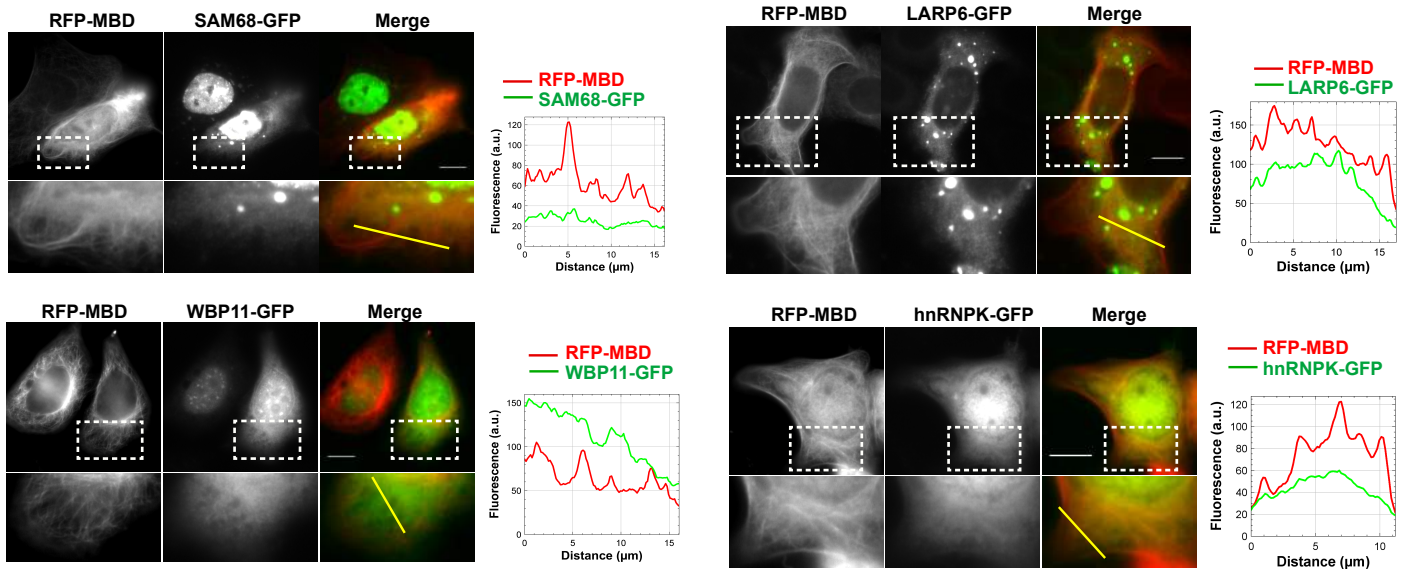


Microtubule bench principle

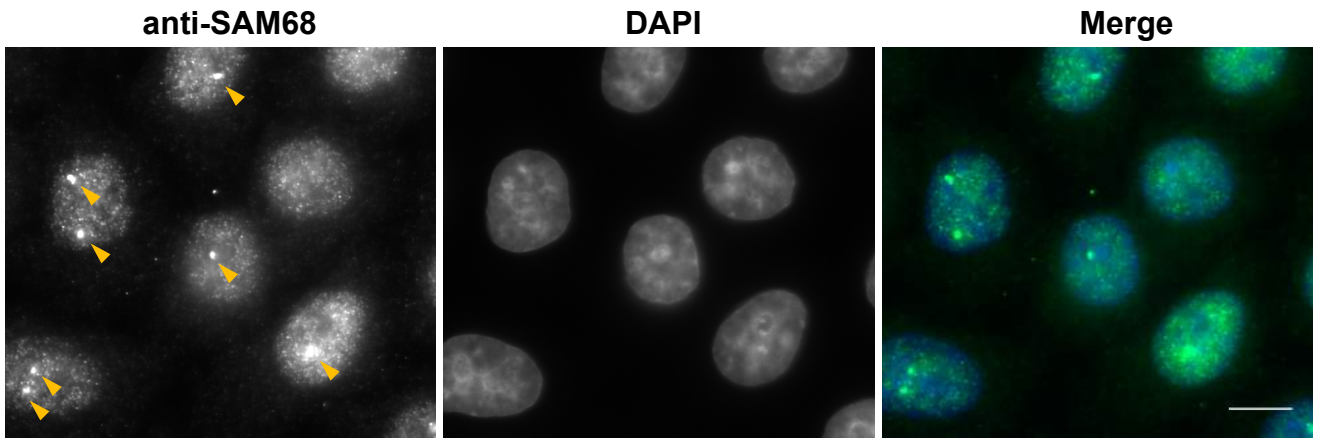


Calculation of the correlation coefficient

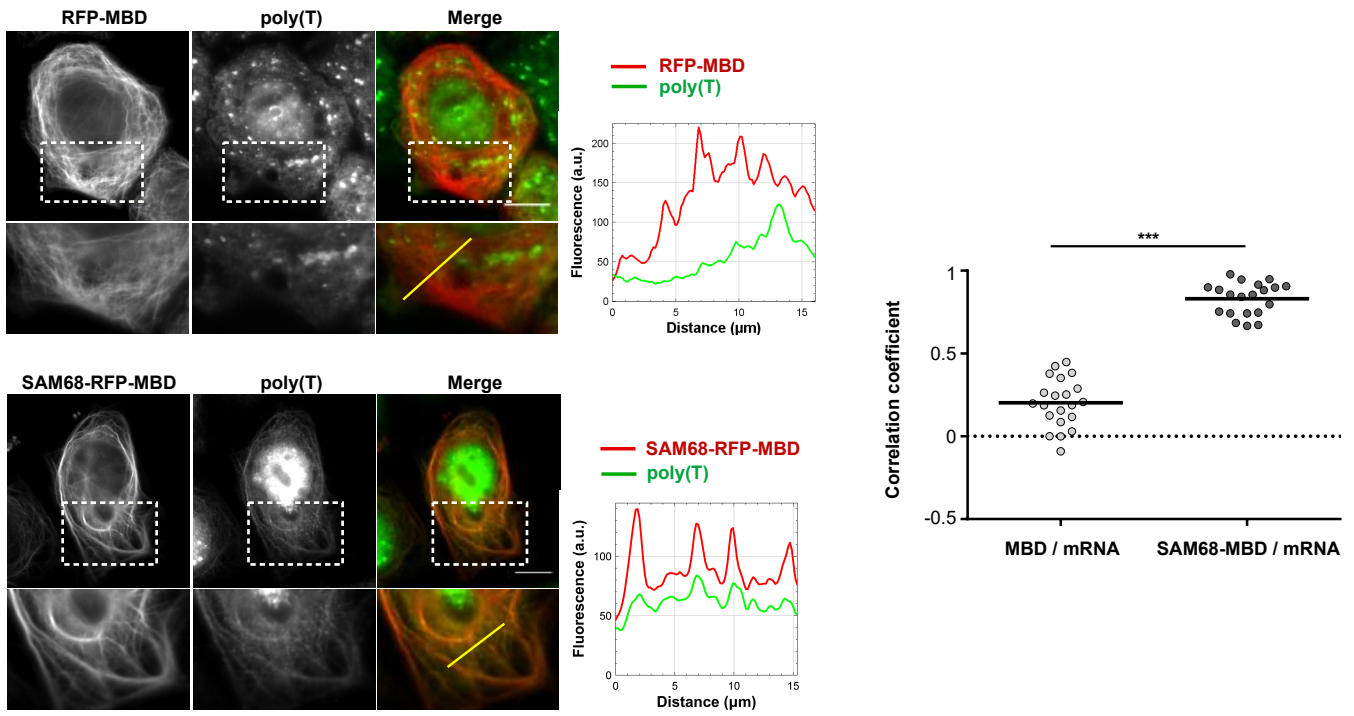
Supplementary Figure S1



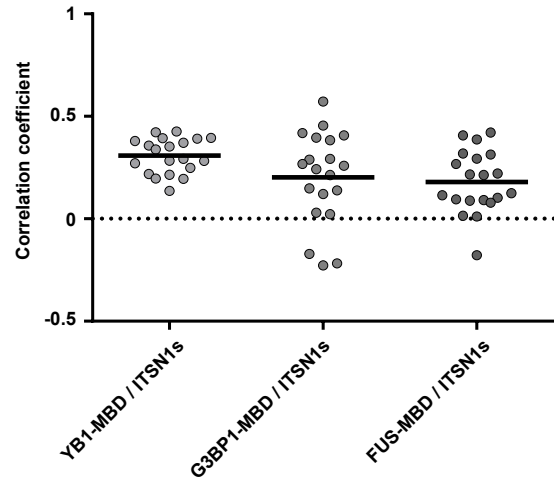
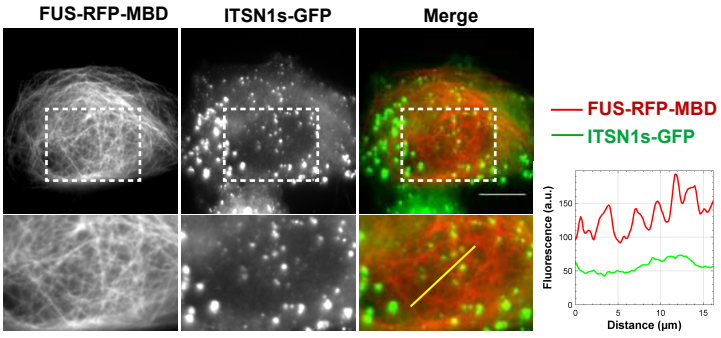
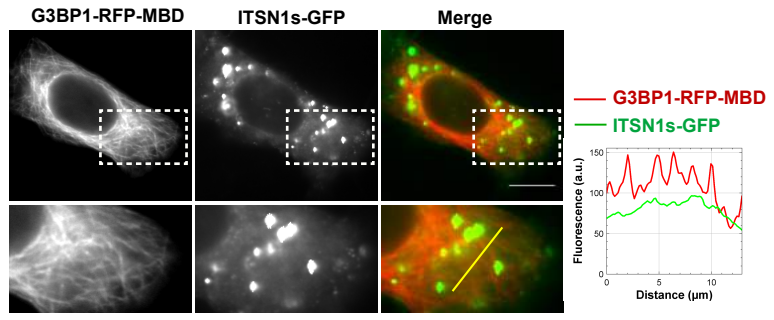
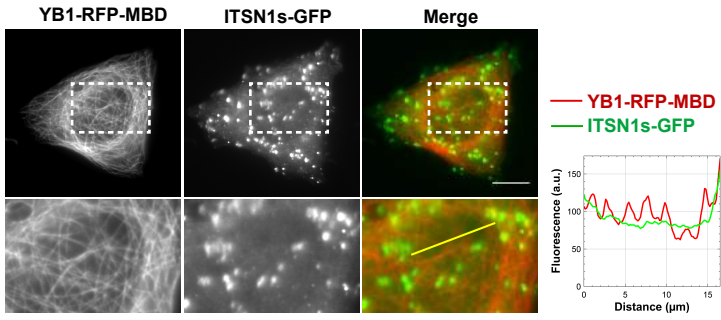
Supplementary Figure S2



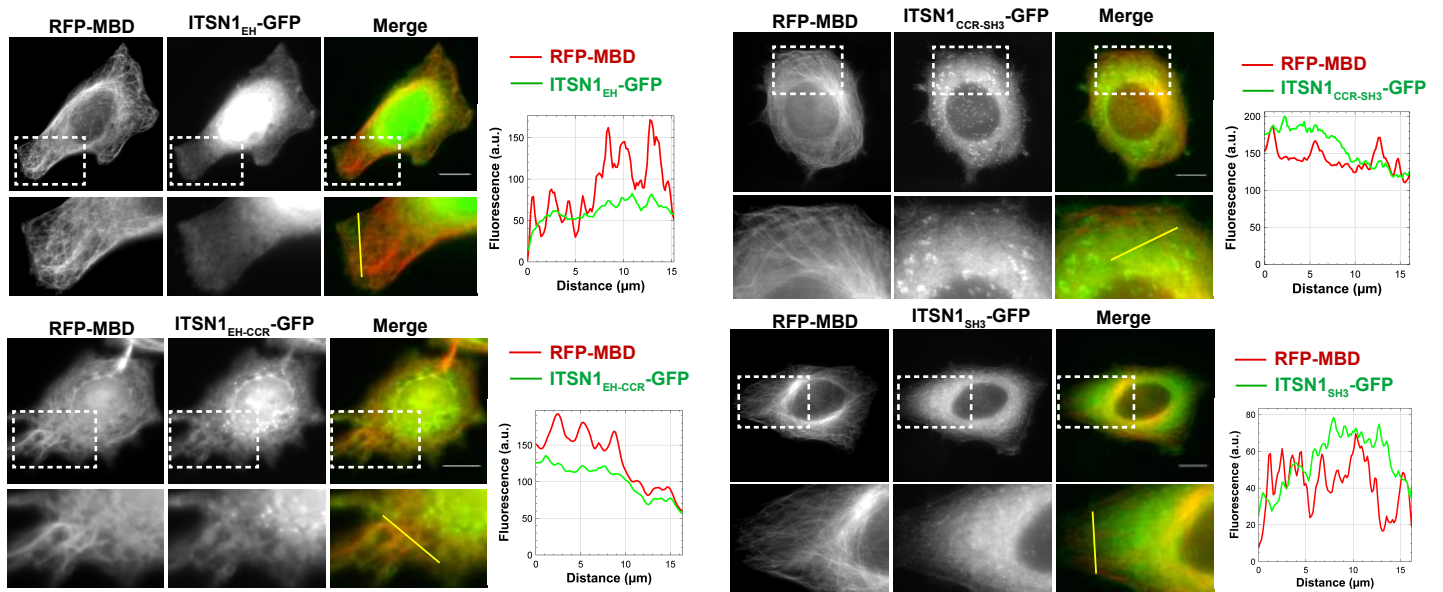
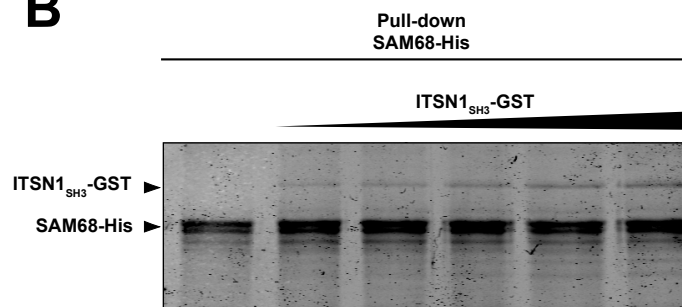
Supplementary Figure S3



Supplementary Figure S4



Supplementary Figure S5

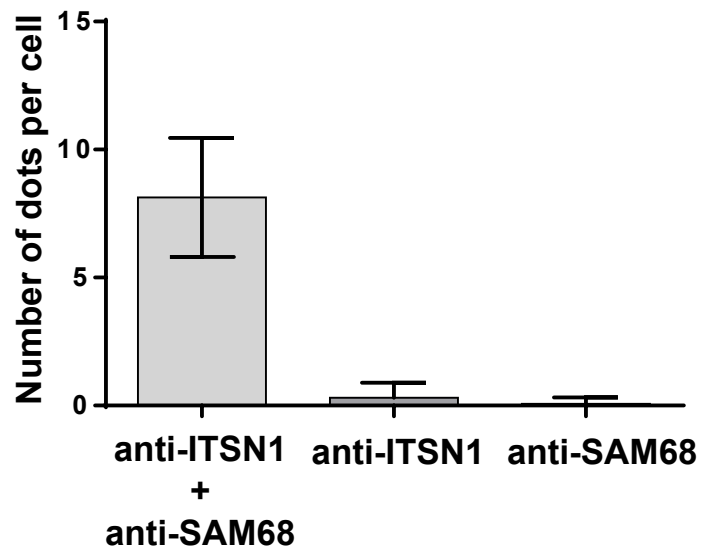
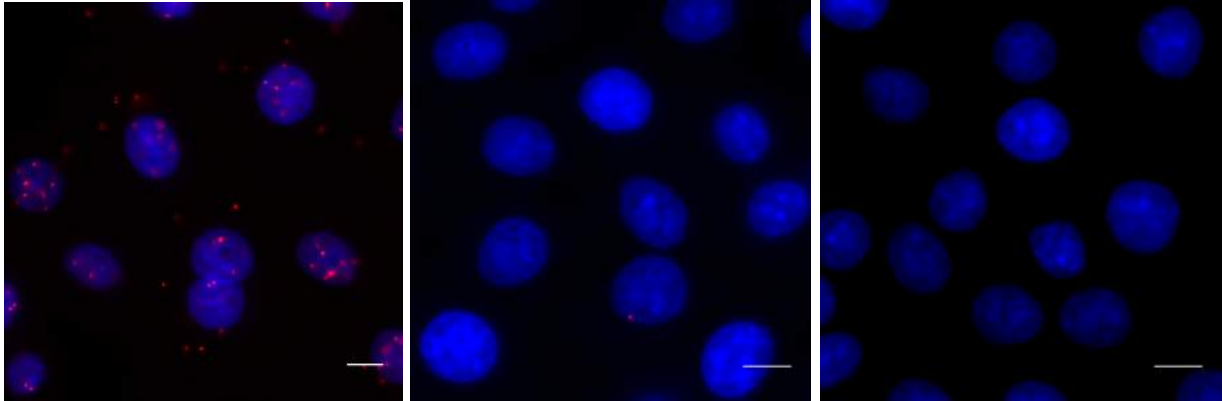
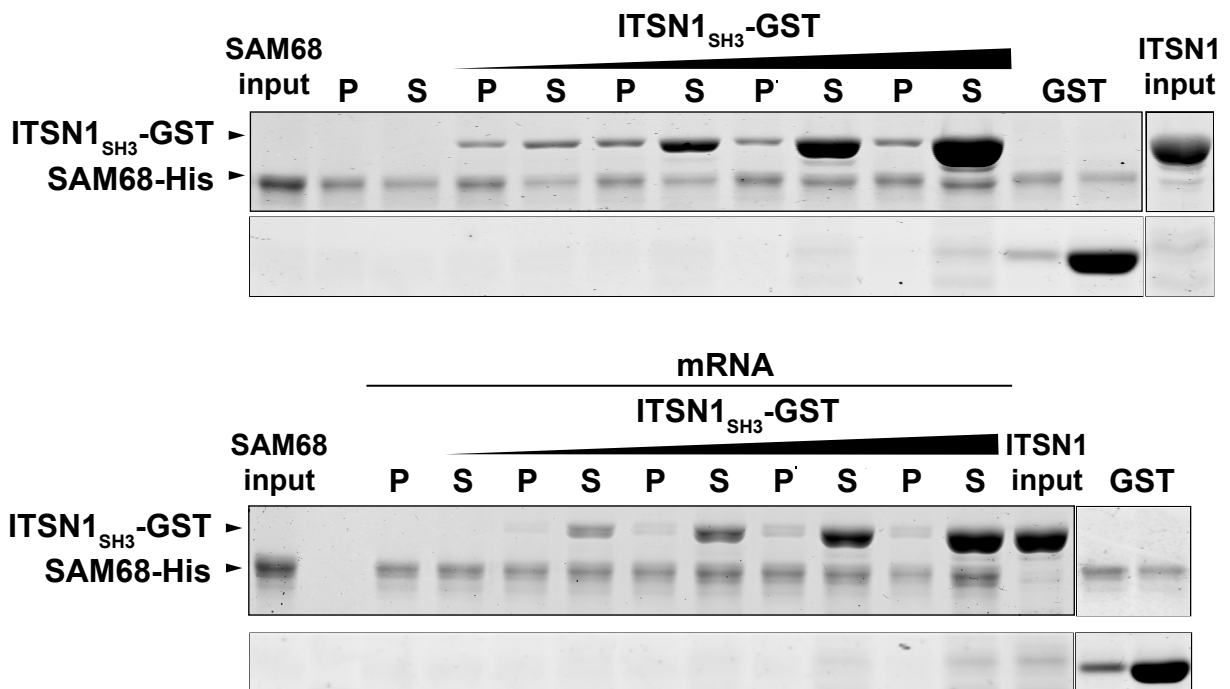
A**B****Supplementary Figure S6**

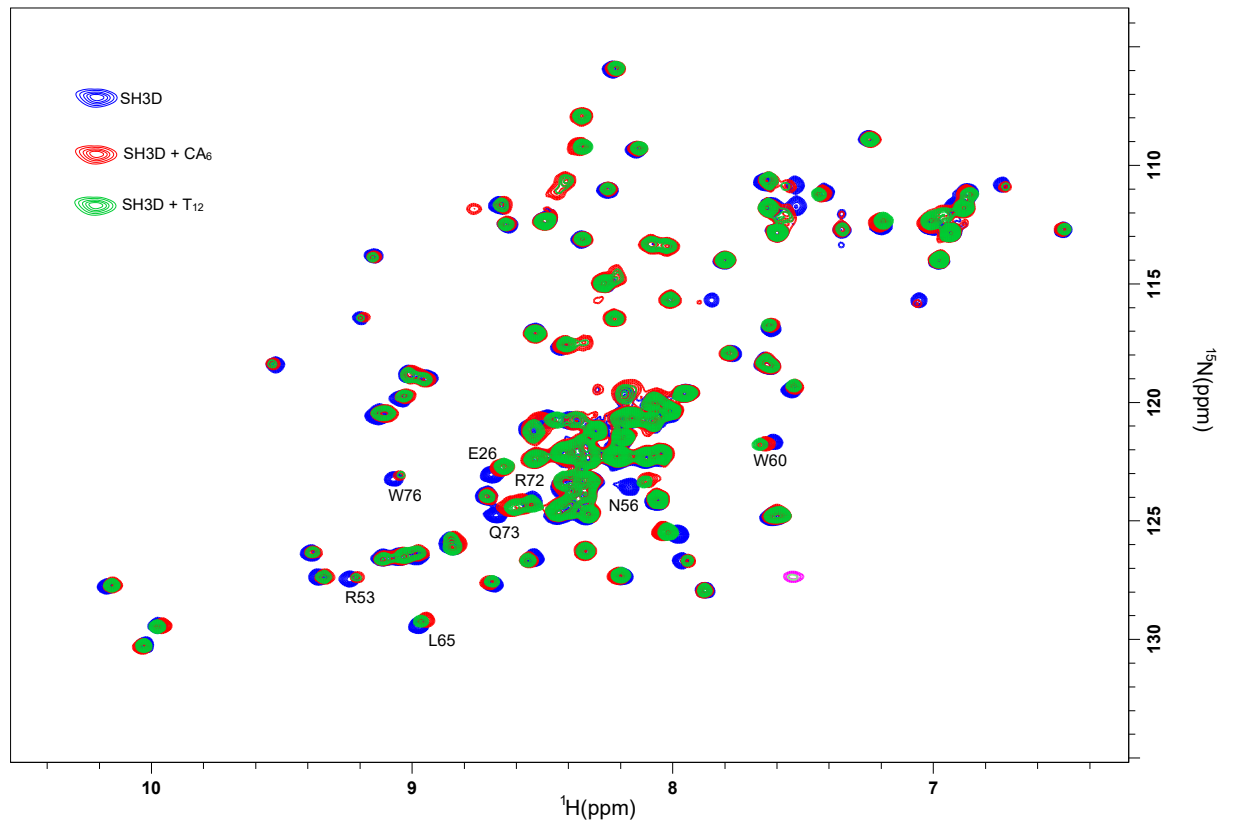
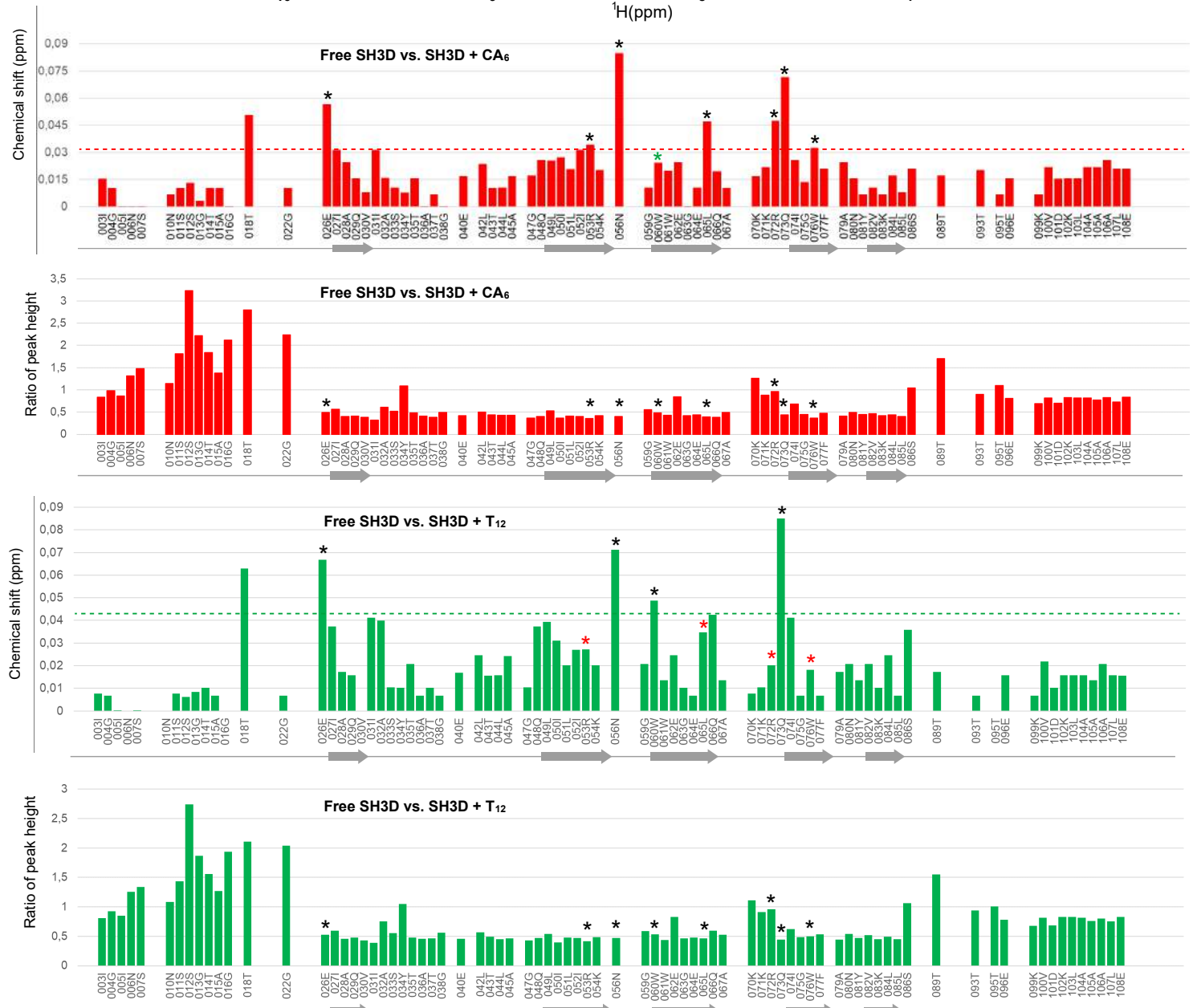
A

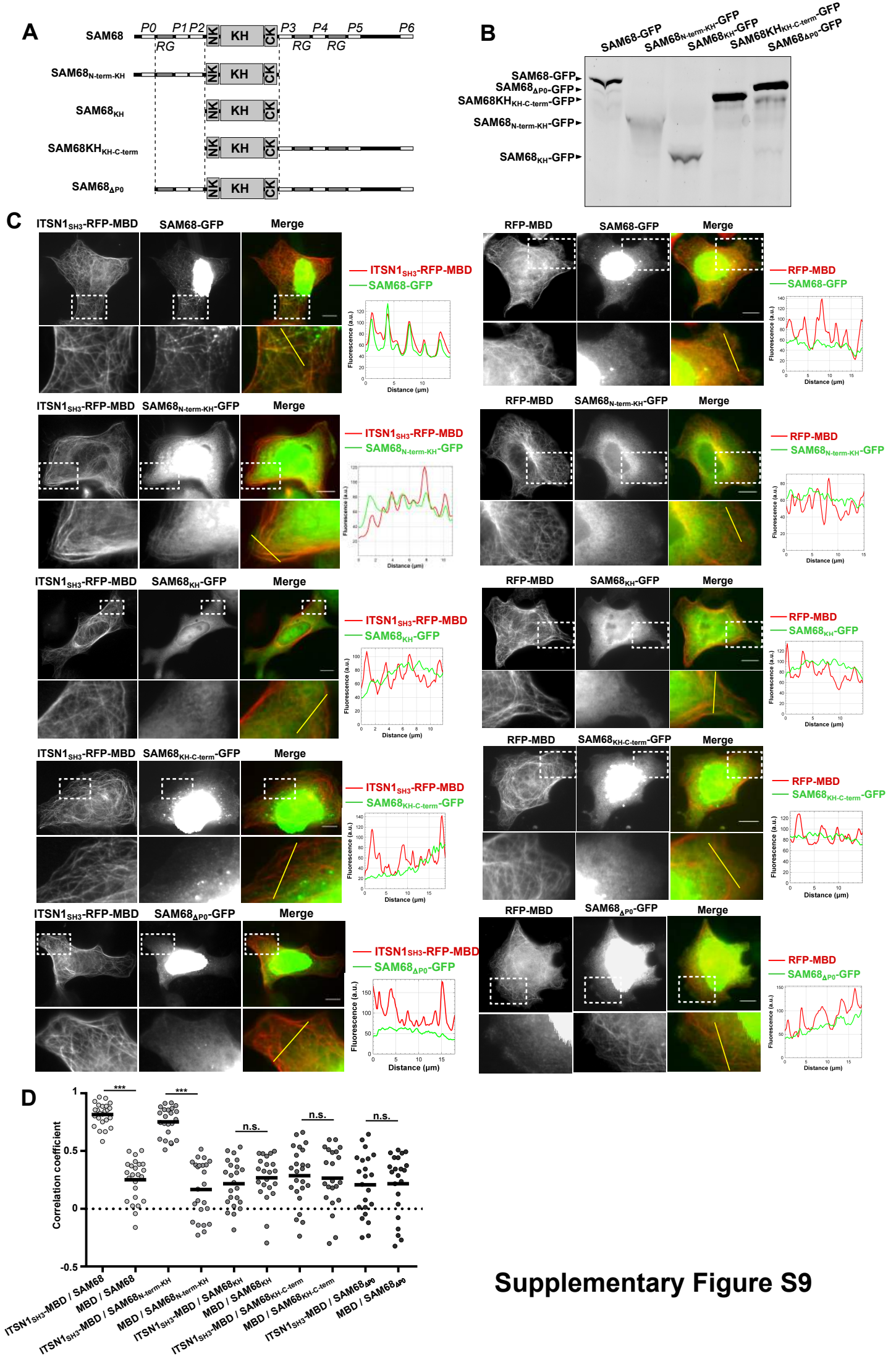
anti-ITSN1 + anti-SAM68

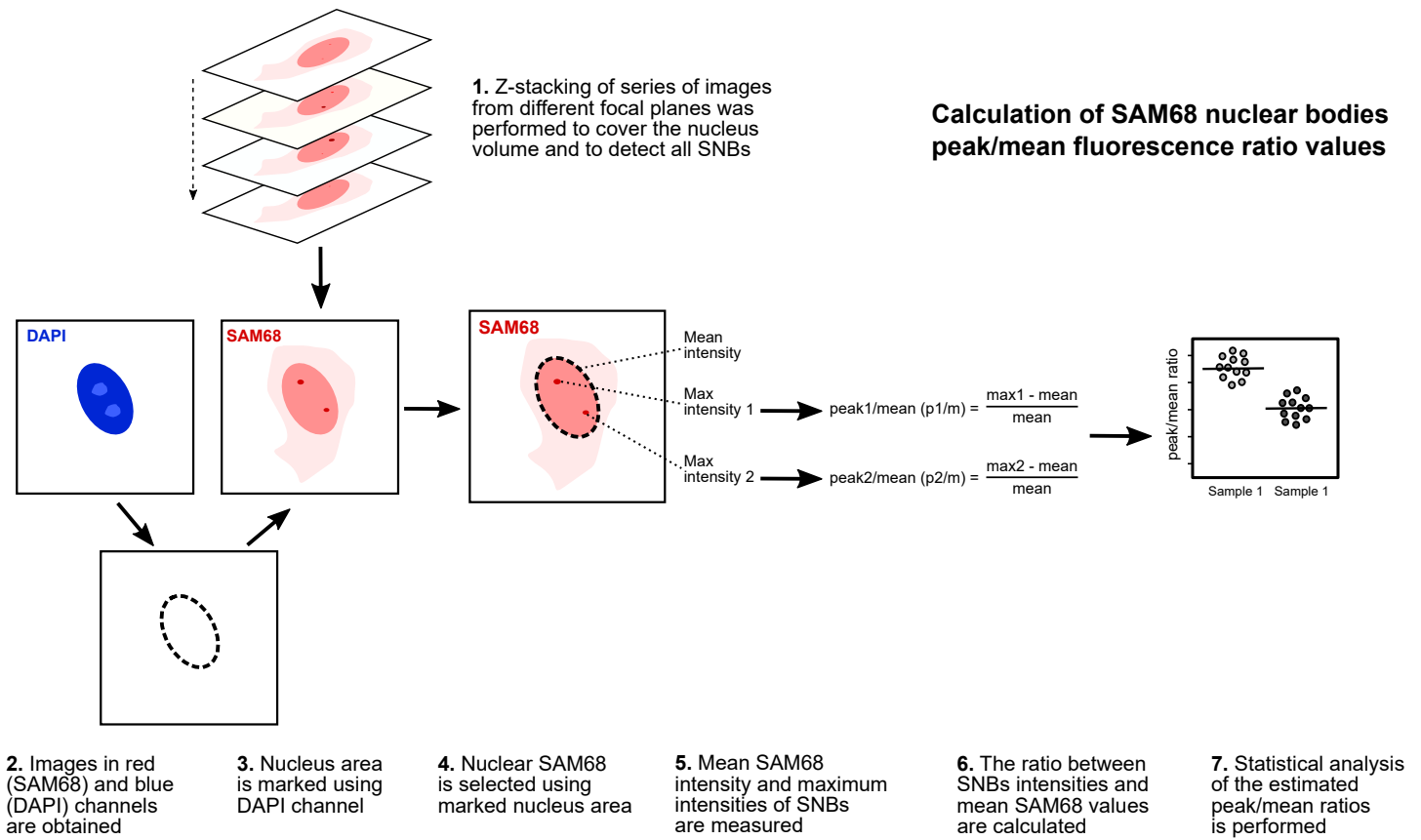
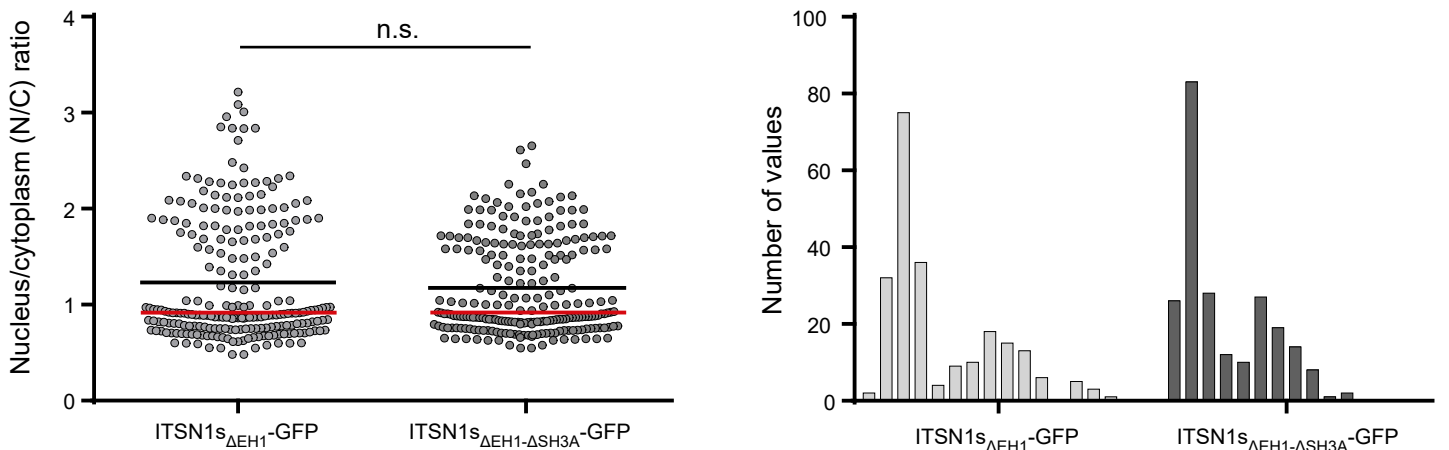
anti-ITSN1

anti-SAM68

**B****Supplementary Figure S7**

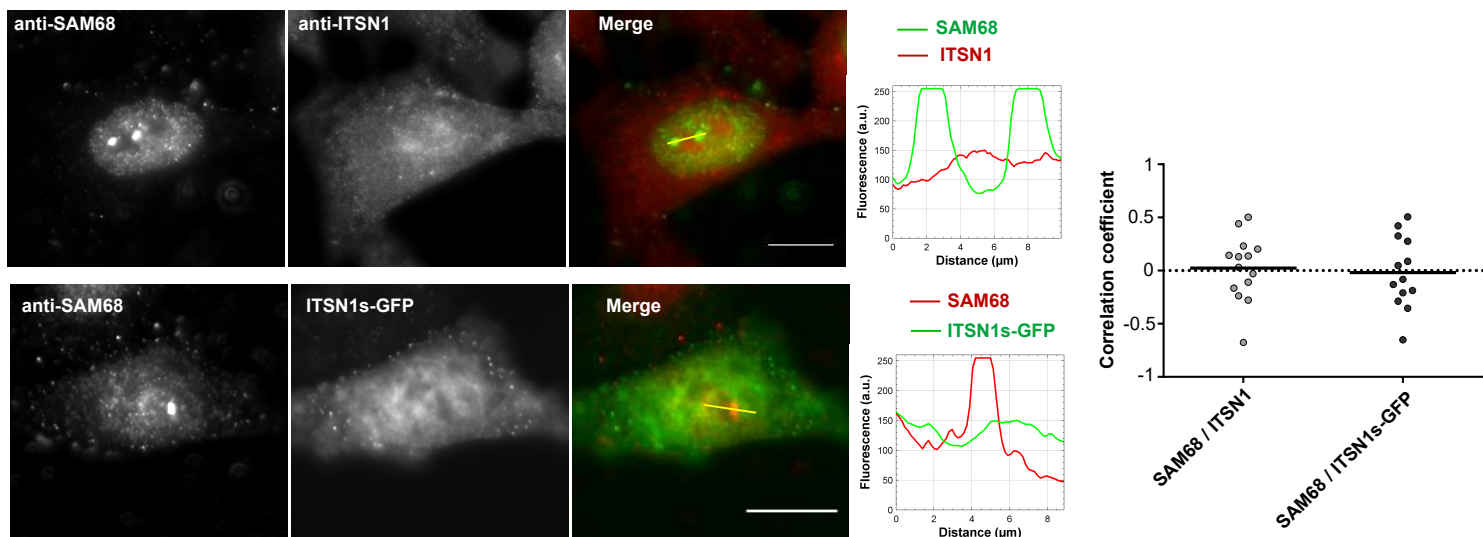
A**B****Supplementary Figure S8**



A**B**

The scatter plot of variation, mean (black line), and median (red line) values of nucleus/cytoplasm (N/C) ratios for ITSN1s-GFP constructs. n.s. - non-significant.

The frequency distribution histogram of nucleus/cytoplasm (N/C) ratios for ITSN1s-GFP constructs.

C

Supplementary Figure S10

Supplementary Table 1. The list of human proteins containing three or more SH3 domains							
NCBI gene ID	Gene symbol	Full name	Other names	NCBI protein ID	Number of SH3 domains	Nuclear localization	Nuclear localization evidence
23268	DNMBP	dynamamin binding protein	TUBA; CTRCT48; ARHGEF36	NP_056036.1	6	Found	Uhlen et al., 2010
6453	ITSN1	intersectin 1	ITSN; SH3D1A; SH3P17	NP_003015.2	5	Found	Alvici et al., 2018; Uhlen et al., 2010
50618	ITSN2	intersectin 2	SWA; SWAP; SH3D1B; SH3P18; PRO2015	NP_006268.2	5	Not found	
152503	SH3D19	SH3 domain containing 193	EBP; EVE1; Kryn; Eve-1; SH3P19	NP_001009555.3	5	Found	Uhlen et al., 2010
9644	SH3PXD2A	SH3 and PX domains 2A	FISH; TKS5; SH3MD1	NP_055446.2	5	Not found	
285590	SH3PXD2B	SH3 and PX domains 2B	FTHS; HOFI; TKS4; TSK4; FAD49; KIAA1295	NP_001017995.1	4	Found	Uhlen et al., 2010
57630	SH3RF1	SH3 domain containing ring finger 1	POSH; RNF142; SH3MD2	NP_065921.2	4	Not found	
344558	SH3RF3	SH3 domain containing ring finger 3	POSH2; SH3MD4	NP_001092759.1	4	Found	Uhlen et al., 2010
23504	RIMBP2	RIMS binding protein 2	RBP2; RIM-BP2; PPP1R133	NP_001338155.1	3	Not found	
85376	RIMBP3	RIMS binding protein 3	RIM-BP3; RIMBP3A; RIMBP3.1; RIM-BP3.1; RIM-BP3.A	NP_056487.1	3	Not found	
9256	TSPOAP1	TSPO associated protein 1	PRAX1; BZRAP1; PBR-IP; PRAX-1; RIMBP1; RIM-BP1	NP_004749.2	3	Not found	
23607	CD2AP	CD2 associated protein	CMS	NP_036252.1	3	Not found	
4690	NCK1	NCK adaptor protein 1	NCK; nck-1; NCKalpha	NP_006144.1	3	Found	Lawe, Hahn, & Wong, 1997
8440	NCK2	NCK adaptor protein 2	GRB4; NCKbeta	NP_003572.2	3	Found	Jahn et al., 2001
79729	SH3D21	SH3 domain containing 21	C1orf113	NP_001156002.1	3	Found	Uhlen et al., 2010
30011	SH3KBP1	SH3 domain containing kinase binding protein 1	HSB1; AGMX2; CIN85; GIG10; HSB-1; IMD61; MIG18; CD2BP3	NP_001340821.1	3	Not found	
153769	SH3RF2	SH3 domain containing ring finger 2	HEPP1; POSHER; RNF158; PPP1R39	NP_689763.4	3	Found	Kim et al., 2013; Uhlen et al., 2010
10580	SORBS1	sorbin and SH3 domain containing 1	CAP; FLAF2; R85FL; SH3D5; SORB1; SH3P12	NP_001030126.1	3	Found	Lebre et al., 2001; Uhlen et al., 2010
8470	SORBS2	sorbin and SH3 domain containing 2	ARGBP2; PRO0618	NP_001257700.1	3	Found	Wang, Golemis, & Kruh, 1997; Uhlen et al., 2010
10174	SORBS3	sorbin and SH3 domain containing 3	SCAM1; SH3D4; SCAM-1; vinexin	NP_005766.3	3	Found	Uhlen et al., 2010

Supplementary Table 2. The list of human RNA-binding proteins containing more than five proline motifs										
NCBI gene ID	Gene symbol	Full name	Other names	NCBI protein ID	RNA-binding domain	Number of PxxP motifs	Number of RxxPxxP motifs	Number of PxxPxR motifs	Database	Nuclear localization
4940	OAS3	2'-5'-oligoadenylate synthetase 3	p100; p100OAS	NP_006178.2	2-5-oligoadenylate_synth	7	0	0	QuickGO	Found
22803	XRN2	5'-3' exoribonuclease 2		NP_001304889.1	5_3_exoribonuclease	5	1	0	QuickGO	Found
54464	XRN1	5'-3' exoribonuclease 1	SEP1	NP_061874.3	5_3_exoribonuclease	7	0	0	QuickGO	Not found
23536	ADAT1	adenosine deaminase tRNA specific 1	HADAT1	NP_036223.2	A_deamin	5	0	0	QuickGO	Found
2058	EPRS	glutamyl-prolyl-tRNA synthetase	EARS; PARS; QARS; QPRS; HLD15; PIG32; GLUPRORS	NP_004437.2	aa-tRNA-synth	9	0	0	QuickGO	Not found
54913	RPP25	ribonuclease P and MRP subunit p25		NP_060263.2	Alba	6	0	0	QuickGO	Found
9716	AQR	aquarius intron-binding spliceosomal factor	IBP160; fSAP164	NP_055506.1	Aquarius_N	5	0	0	QuickGO	Found
4076	CAPRIN1	cell cycle associated protein 1	M11S1; GPIAP1; RNG105; GPIP137; GRIP137; p137GPI	NP_005889.3	Caprin-1_C	6	1	1	QuickGO	Not found
22794	CASC3	CASC3 exon junction complex subunit	BTZ; MLN51	NP_031385.2	CASC3	12	1	2	QuickGO	Found
51087	YBX2	Y-box binding protein 2	BPC; MSY2; CSDA3; CONTRIN	NP_057066.2	CSD	8	2	1	RBPDB/AttrACT	Found
27254	CSDC2	cold shock domain containing C2	PIPPIN; dJ347H13.2	NP_055275.1	CSD	5	0	0	RBPDB	Found
7157	TP53	tumor protein p53	P53; BCC7; LFS1; BMFS5; TRP53	NP_000537.3	CTD	6	0	0	QuickGO	Found
104	ADARB1	adenosine deaminase RNA specific B1	RED1; ADAR2; DRABA2; DRADA2	NP_056648.1	dsRBD	5	0	0	QuickGO	Found
3609	ILF3	interleukin enhancer binding factor 3	CBTF; DRBF; MMP4; MPP4; NF90; NFAR; NF110; NF90a; NF90b; NF90c; NFAR2; TCP80;	NP_060090.2	dsRBD	5	0	0	QuickGO	Found

			DRBP76; NF110b; NFAR-1; NFAR-2; NFAR90; TCP110; MPP4110; NF90ctv; NFAR110; MPHOSPH4; NF-AT- 90							
6780	STAU1	stau1 double-stranded RNA binding protein 1	STAU; PPP1R150	NP_00130606 4.1	dsRBD	6	0	0	QuickGO	Not found
23405	DICER1	dicer 1, ribonuclease III	DCR1; GLOW; MNG1; Dicer; HERNA; RMSE2; Dicer1e; K12H4.8- LIKE	NP_085124.2	dsRBD; PAZ	9	0	1	QuickGO	Not found
54487	DGCR8	DGCR8 microprocessor complex subunit	Gy1; pasha; DGCRK6; C22orf12	NP_073557.3	dsRBDx2	7	0	0	QuickGO	Found
27067	STAU2	stau1 double-stranded RNA binding protein 2	39K2; 39K3	NP_00115785 2.1	dsRBDx4	5	0	0	QuickGO	Found
6651	SON	SON DNA binding protein	SON3; BASS1; DBP- 5; NREBP; TOKIMS; C21orf50	NP_620305.2	DSRM	36	0	0	QuickGO	Found
103	ADAR	adenosine deaminase RNA specific	DSH; AGS6; G1P1; IFI4; P136; ADAR1; DRADA; DSRAD; IFI- 4; K88DSRBP	NP_001102.3	DSRM; ADEAMc	6	0	0	AttrACT/QuickGO	Found
1660	DHX9	DExH-box helicase 9	LKP; RHA; DDX9; NDH2; NDHII	NP_001348.2	DSRM; HrpA	5	0	0	AttrACT/QuickGO	Found
23293	SMG6	SMG6 nonsense mediated mRNA decay factor	EST1A; SMG-6; C17orf31; hSMG5/7a	NP_060045.4	EST1; PIN	8	0	0	QuickGO	Found
26065	LSM14A	LSM14A mRNA processing body assembly factor	RAP55; FAM61A; RAP55A; C19orf13	NP_00110756 5.1	FDF	6	0	2	QuickGO	Not found
92345	NAF1	nuclear assembly factor 1 ribonucleoprotein		NP_612395.2	Gar1/Naf1	10	1	0	QuickGO	Found
31778 1	DDX51	DEAD-box helicase 51		NP_778236.2	Helicase	9	0	0	QuickGO	Found
9704	DHX34	DExH-box helicase 34	HRH1; DDX34	NP_055496.2	Helicase	9	2	0	QuickGO	Found
11325	DDX42	DEAD-box helicase 42	RHELP; RNAHP; SF3B8; DDX42P; SF3b125	NP_031398.2	Helicase	8	0	1	QuickGO	Found

79039	DDX54	DEAD-box helicase 54	DP97	NP_00110479 2.1	Helicase	6	1	0	QuickGO	Found
64794	DDX31	DEAD-box helicase 31	PPP1R25	NP_073616.6	Helicase	5	1	0	QuickGO	Found
9785	DHX38	DEAH-box helicase 38	RP84; DDX38; PRP16; PRPF16	NP_054722.2	Helicase	5	1	1	QuickGO	Found
22907	DHX30	DExH-box helicase 30	DDX30; RETCOR; NEDMIAL	NP_619520.1	Helicase	5	1	1	QuickGO	Not found
6832	SUPV3L1	Suv3 like RNA helicase	SUV3	NP_003162.2	Helicase; SUV3	5	0	1	AttrACT/QuickGO	Found
26057	ANKRD17	ankyrin repeat domain 17	GTAR; MASK2; NY- BR-16	NP_115593.3	KH	20	0	1	RBPDB/QuickGO	Found
22889	KHDC4	KH domain containing 4, pre-mRNA splicing factor	BLOM7; KIAA0907; SNORA80EHG	NP_055764.2	KH	12	0	0	QuickGO	Found
10657	KHDRBS1	KH RNA binding domain containing, signal transduction associated 1	p62; p68; Sam68	NP_006550.1	KH	8	1	1	RBPDB/AttrACT/Quick GO	Found
54882	ANKHD1	ankyrin repeat and KH domain containing 1	MASK; MASK1; VBARP; PP2500	NP_060217.1	KH	14	0	1	RBPDB/AttrACT/Quick GO	Not found
8165	AKAP1	A-kinase anchoring protein 1	AKAP; PRKA1; AKAP84; TDRD17; AKAP121; AKAP149; D-AKAP1; PPP1R43; SAKAP84	NP_003479.1	KH	8	0	0	RBPDB/AttrACT/Quick GO	Not found
20255 9	KHDRBS2	KH RNA binding domain containing, signal transduction associated 2	SLM1; SLM-1	NP_00133755 1.1	KH	5	2	2	RBPDB/AttrACT	Not found
7536	SF1	splicing factor 1	BBP; MBBP; ZFM1; ZNF162; D11S636; ZCCHC25	NP_004621.2	KH; Znf_CCHC	24	0	0	RBPDB/AttrACT/Quick GO	Found
9513	FXR2	FMR1 autosomal homolog 2	FXR2P; FMR1L2	NP_004851.2	KHx2	6	2	0	RBPDB/AttrACT/Quick GO	Not found
92312	MEX3A	mex-3 RNA binding family member A	RKHD4; MEX-3A; RNF162	NP_00108719 4.1	KHx2; Znf_CCCH	11	2	0	RBPDB/QuickGO	Not found
39966 4	MEX3D	mex-3 RNA binding family member D	MEX3; TINO; RKHD1; MEX-3D; RNF193; OK/SW- cl.4	NP_976049.3	KHx2; Znf_RING	15	2	1	RBPDB/QuickGO	Found
84206	MEX3B	mex-3 RNA binding family member B	RKHD3; MEX-3B; RNF195	NP_115622.2	KHx2; Znf_RING	6	0	0	RBPDB/QuickGO	Found
51320	MEX3C	mex-3 RNA binding family member C	RKHD2; BM-013; MEX-3C; RNF194	NP_057710.3	KHx2; Znf_RING	13	2	1	RBPDB/QuickGO	Not found

3190	HNRNPK	heterogeneous nuclear ribonucleoprotein K	AUKS; CSBP; TUNP; HNRPK	NP_002131.2	KHx3	5	3	3	RBPDB/AttRACT/QuickGO	Found
80114	BICC1	BicC family RNA binding protein 1	BICC; CYSRD	NP_001073981.1	KHx3; SAM	5	0	0	RBPDB/QuickGO	Found
8570	KHSRP	KH-type splicing regulatory protein	p75; FBP2; KSRP; FUBP2	NP_003676.2	KHx4	18	1	0	RBPDB/AttRACT/QuickGO	Found
8880	FUBP1	far upstream element binding protein 1	FBP; FUBP; hDH V	NP_001290362.1	KHx4	14	0	0	RBPDB/QuickGO	Found
23367	LARP1	La ribonucleoprotein domain family member 1	LARP	NP_056130.2	La	15	1	1	RBPDB/QuickGO	Found
55132	LARP1B	La ribonucleoprotein domain family member 1B	LARP2	NP_060548.2	La	7	0	1	RBPDB/QuickGO	Found
23185	LARP4B	La ribonucleoprotein domain family member 4B	LARP5; KIAA0217	NP_001338206.1	La; RRM	8	0	0	RBPDB/QuickGO	Not found
113251	LARP4	La ribonucleoprotein domain family member 4	PP13296	NP_055970.1	La; RRM	5	0	0	RBPDB/QuickGO	Not found
6628	SNRPB	small nuclear ribonucleoprotein polypeptides B and B1	COD; CCMS; SNRPB1; SmB/B'; Sm-B/B'; snRNP-B; SmB/SmB'	NP_937859.1	LSm	6	1	0	RBPDB/QuickGO	Found
6638	SNRPN	small nuclear ribonucleoprotein polypeptide N	SMN; PWCR; SM-D; sm-N; RT-LI; HCERN3; SNRNP-N; SNURF-SNRPN	NP_003088.1	LSm	6	1	0	RBPDB	Found
134353	LSM11	LSM11, U7 small nuclear RNA associated		NP_775762.1	LSm	5	1	0	RBPDB/QuickGO	Found
4686	NCBP1	nuclear cap binding protein subunit 1	NCBP; Sto1; CBP80	NP_001338433.1	MIF4G-like	5	0	0	QuickGO	Found
190	NROB1	nuclear receptor subfamily 0 group B member 1	AHC; AHX; DSS; GTD; HHG; AHCH; DA; DAX-1; NROB1; SRXY	NP_000466.2	NR_Repeatx4	5	1	0	QuickGO	Found
65083	NOL6	nucleolar protein 6	NRAP; UTP22; bA311H10.1	NP_075068.2	Nrap	9	1	1	QuickGO	Found
219988	PATL1	PAT1 homolog 1, processing body mRNA decay factor	Pat1b; hPat1b	NP_689929.2	Pat-C	7	0	1	QuickGO	Found
55124	PIWIL2	piwi like RNA-mediated gene silencing 2	CT80; HILI; mili; PIWIL1L	NP_001129193.1	PAZ	6	0	0	QuickGO	Found
23381	SMG5	SMG5 nonsense mediated mRNA decay factor	EST1B; SMG-5; LPTS-RP1	NP_056142.2	PIN	6	0	0	QuickGO	Found

9698	PUM1	pumilio RNA binding family member 1	PUMH; HSPUM; PUMH1; PUML1; SCA47	NP_00101849 4.1	PUM	6	0	0	RBPDB/AttRACT/QuickGO	Found
10250	SRRM1	serine and arginine repetitive matrix 1	160-KD; POP101; SRM160	NP_00129037 7.1	PWI	16	8	4	RBPDB/QuickGO	Found
3508	IGHMBP2	immunoglobulin mu DNA binding protein 2	HCSA; HMN6; CATF1; CMT2S; SMARD1; SMUBP2; ZFAND7	NP_002171.2	R3H; Znf_AN1	5	0	0	AttRACT/QuickGO	Found
29102	DROSHA	drosha ribonuclease III	RN3; ETOH12; RNASEN; RANSE3L; RNASE3L; HSA242976	NP_037367.3	RIBOc; Rnc	24	1	1	QuickGO	Found
60528	ELAC2	elaC ribonuclease Z 2	ELC2; HPC2; COXPD17	NP_060597.4	RibonucZ	5	0	0	QuickGO	Found
5442	POLRMT	RNA polymerase mitochondrial	APOLMT; MTRNAP; MTRPOL; h-mtRPOL	NP_005026.3	RNA_POL	10	2	0	QuickGO	Not found
5430	POLR2A	RNA polymerase II subunit A	POLR2, POLRA, RPB1, RPBh1, RPO2, RPOL2, RpIILS, hRPB220, hsRPB1	NP_000928.1	RNAP_II_Rpb1	57	1	0	QuickGO	Found
23067	SETD1B	SET domain containing 1B, histone lysine methyltransferase	KMT2G; Set1B	NP_00134027 4.1	RRM	63	3	4	RBPDB	Found
56252	YLPM1	YLP motif containing 1	ZAP3; ZAP113; PPP1R169; C14orf170	NP_062535.2	RRM	59	2	0	QuickGO	Found
15543 5	RBM33	RNA binding motif protein 33	PRR8	NP_444271.2	RRM	40	3	1	RBPDB/QuickGO	Found
23082	PPRC1	PPARG related coactivator 1	PRC	NP_055877.3	RRM	38	2	1	RBPDB/AttRACT/QuickGO	Found
9739	SETD1A	SET domain containing 1A, histone lysine methyltransferase	Set1; KMT2F; Set1A	NP_055527.1	RRM	33	3	4	RBPDB	Found
57466	SCAF4	SR-related CTD associated factor 4	SRA4; SFRS15	NP_065757.1	RRM	30	1	1	QuickGO	Found
23112	TNRC6B	trinucleotide repeat containing adaptor 6B		NP_00115597 3.1	RRM	21	1	0	QuickGO	Found
4288	MKI67	marker of proliferation Ki-67	KIA; MIB-; MIB-1; PPP1R105	NP_002408.3	RRM	20	5	1	QuickGO	Found

11052	CPSF6	cleavage and polyadenylation specific factor 6	CFIM; CFIM68; CFIM72; HPBRII-4; HPBRII-7	NP_00128787 6.1	RRM	19	0	0	RBPDB/QuickGO	Found
13352 2	PPARGC1 B	PPARG coactivator 1 beta	PERC; ERRL1; PGC1B; PGC-1(beta)	NP_573570.3	RRM	14	2	1	RBPDB	Found
79171	RBM42	RNA binding motif protein 42		NP_077297.2	RRM	14	1	0	RBPDB/AttRACT/QuickGO	Found
8888	MCM3AP	minichromosome maintenance complex component 3 associated protein	GANP; SAC3; MAP80; PNRIID	NP_003897.2	RRM	12	1	0	RBPDB	Found
51593	SRRT	serrate, RNA effector molecule	ARS2; ASR2; serrate	NP_056992.4	RRM	12	0	1	RBPDB/QuickGO	Found
22985	ACIN1	apoptotic chromatin condensation inducer 1	ACN; ACINUS; fSAP152	NP_055792.1	RRM	11	1	0	RBPDB/QuickGO	Found
27327	TNRC6A	trinucleotide repeat containing adaptor 6A	GW1; FAME6; GW182; TNRC6; CAGH26	NP_055309.2	RRM	10	0	0	RBPDB/QuickGO	Found
23283	CSTF2T	cleavage stimulation factor subunit 2 tau variant	CstF-64T	NP_056050.1	RRM	9	0	0	RBPDB/QuickGO	Found
84875	PARP10	poly(ADP-ribose) polymerase family member 10	ARTD10	NP_116178.2	RRM	8	1	1	RBPDB	Found
23592	LEMD3	LEM domain containing 3	MAN1	NP_055134.2	RRM	6	0	0	RBPDB	Found
79869	CPSF7	cleavage and polyadenylation specific factor 7	CFIm59	NP_079087.3	RRM	5	0	1	RBPDB/QuickGO	Found
11030	RBPMS	RNA binding protein, mRNA processing factor	HERMES	NP_00100871 0.1	RRM	5	1	0	RBPDB/QuickGO	Found
9667	SAFB2	scaffold attachment factor B2		NP_055464.1	RRM	5	2	0	RBPDB/QuickGO	Found
8867	SYNJ1	synaptojanin 1	EIEE53; INPP5G; PARK20	NP_003886.3	RRM	19	2	7	RBPDB	Not found
57055	DAZ2	deleted in azoospermia 2	pDP1678	NP_065096.2	RRM	18	0	0	RBPDB	Not found
57054	DAZ3	deleted in azoospermia 3	pDP1679	NP_065097.2	RRM	15	0	0	RBPDB	Not found
57135	DAZ4	deleted in azoospermia 4	pDP1680; pDP1681	NP_00100537 5.1	RRM	14	0	0	RBPDB	Not found
8871	SYNJ2	synaptojanin 2	INPP5H	NP_003889.1	RRM	12	3	3	RBPDB	Not found
1975	EIF4B	eukaryotic translation initiation factor 4B	EIF-4B; PRO1843	NP_00128775 0.1	RRM	8	1	1	RBPDB/AttRACT/QuickGO	Not found

10495	ENOX2	ecto-NOX disulfide-thiol exchanger 2	APK1; tNOX; COVA1	NP_872114.1	RRM	6	1	0	RBPDB	Not found
54625	PARP14	poly(ADP-ribose) polymerase family member 14	BAL2; ARTD8; pART8; PARP-14	NP_060024.2	RRM	6	1	1	RBPDB	Not found
27037	TRMT2A	tRNA methyltransferase 2 homolog A	HTF9C	NP_073564.3	RRM	6	0	0	RBPDB/QuickGO	Not found
9908	G3BP2	G3BP stress granule assembly factor 2		NP_987101.1	RRM	5	1	1	RBPDB/AttRACT/QuickGO	Not found
22828	SCAF8	SR-related CTD associated factor 8	RBM16	NP_001273117.1	RRM; CID	24	1	0	RBPDB	Found
84456	L3MBTL3	L3MBTL histone methyl-lysine binding protein 3	MBT1; MBT-1	NP_115814.1	RRM; La	8	0	1	RBPDB	Found
58517	RBM25	RNA binding motif protein 25	S164; NET52; RNPC7; Snu71; RED120; fSAP94	NP_067062.1	RRM; PWI	8	1	0	RBPDB/AttRACT/QuickGO	Found
10594	PRPF8	pre-mRNA processing factor 8	PRP8; RP13; HPRP8; PRPC8; SNRNP220	NP_006436.3	RRM; U5-snRNA; U6-snRNA; RNaseH-like	9	0	0	QuickGO	Found
282996	RBM20	RNA binding motif protein 20		NP_001127835.2	RRM; Znf_C2H2x2	14	1	2	RBPDB	Found
54439	RBM27	RNA binding motif protein 27	Psc1; ARRS1; ZC3H18; ZC3H20	NP_061862.1	RRM; Znf_CCCH	12	1	0	RBPDB/QuickGO	Found
64852	TUT1	terminal uridylyl transferase 1, U6 snRNA-specific	PAPD2; RBM21; TENT1; URLC6; TUTase; STARPAP	NP_073741.3	RRM; Znf_CCCH	10	1	0	RBPDB/AttRACT/QuickGO	Found
55696	RBM22	RNA binding motif protein 22	Cwc2; ZC3H16; fSAP47	NP_060517.1	RRM; Znf_CCHC; Znf_CCCH	7	0	0	RBPDB/QuickGO	Found
2130	EWSR1	EWS RNA binding protein 1	EWS; EWS-FLI1; bK984G1.4	NP_053733.2	RRM; Znf_RanBP2	13	2	0	RBPDB/QuickGO	Found
4850	CNOT4	CCR4-NOT transcription complex subunit 4	NOT4; NOT4H; CLONE243	NP_001177779.1	RRM; Znf_RING	5	0	0	RBPDB/AttRACT/QuickGO	Not found
57690	TNRC6C	Trinucleotide repeat-containing gene 6C protein		NP_001136112.1	RRMx1	20	0	0	RBPDB/QuickGO	Found
146713	RBFOX3	RNA binding fox-1 homolog 3	FOX3; NEUN; FOX-3; HRNBP3	NP_001076044	RRMx1	6	1	0	RBPDB/QuickGO	Found
6421	SFPQ	splicing factor proline and glutamine rich	PSF; POMP100; PPP1R140	NP_005057.1	RRMx2	20	0	1	RBPDB/AttRACT/QuickGO	Found
10262	SF3B4	splicing factor 3b subunit 4	AFD1; Hsh49; SAP49; SF3b49	NP_005841.1	RRMx2	17	2	2	RBPDB/QuickGO	Found

22849	CPEB3	cytoplasmic polyadenylation element binding protein 3		NP_055727.3	RRMx2	13	1	0	RBPDB/QuickGO	Found
26528	DAZAP1	DAZ associated protein 1		NP_733829.1	RRMx2	9	1	0	RBPDB/AttRACT/QuickGO	Found
132864	CPEB2	cytoplasmic polyadenylation element binding protein 2	CPEB-2; CPE-BP2; hCPEB-2	NP_001170853.1	RRMx2	8	1	0	RBPDB/AttRACT/QuickGO	Found
55599	RNPC3	RNA binding region (RNP1, RRM) containing 3	RNP; IGHD5; RBM40; SNRNP65	NP_060089.1	RRMx2	8	0	0	RBPDB	Found
10180	RBM6	RNA binding motif protein 6	3G2; g16; DEF3; DEF-3; HLC-11; NY-LU-12	NP_005768.1	RRMx2	7	1	1	RBPDB/AttRACT/QuickGO	Found
64506	CPEB1	cytoplasmic polyadenylation element binding protein 1	CPEB; CPEB-1; h-CPEB; CPE-BP1; hCPEB-1	NP_085097.3	RRMx2	6	1	0	RBPDB/AttRACT	Found
3191	HNRNPL	heterogeneous nuclear ribonucleoprotein L	HNRPL; hnRNP-L; P/OKcl.14	NP_001524.2	RRMx2	6	0	0	RBPDB/AttRACT/QuickGO	Found
55269	PSPC1	paraspeckle component 1	PSP1	NP_001035879.1	RRMx2	6	0	0	RBPDB/QuickGO	Found
80315	CPEB4	cytoplasmic polyadenylation element binding protein 4	CPE-BP4; hCPEB-4	NP_085130.2	RRMx2	5	1	0	RBPDB/AttRACT/QuickGO	Found
9665	MARF1	meiosis regulator and mRNA stability factor 1	LKAP; LMKB; PPP1R34; KIAA0430	NP_055462.2	RRMx2	9	0	0	RBPDB	Not found
27303	RBMS3	RNA binding motif single stranded interacting protein 3		NP_001003793.1	RRMx2	5	0	0	RBPDB/AttRACT/QuickGO	Not found
8241	RBM10	RNA binding motif protein 10	S1-1; TARPS; GPATC9; ZRANB5; GPATCH9; DXS8237E	NP_005667.2	RRMx2; Znf_C2H2; Znf_RanBP2	5	1	1	RBPDB/QuickGO	Found
64062	RBM26	RNA binding motif protein 26	ARRS2; SE70-2; ZC3H17; PRO1777; C13orf10; PPP1R132	NP_001273560.1	RRMx2; Znf_CCCH	14	0	0	RBPDB/QuickGO	Found
1617	DAZ1	deleted in azoospermia 1	DAZ; SPGY	NP_004072.3	RRMx3	16	0	0	RBPDB	Found
125950	RAVER1	ribonucleoprotein, PTB binding 1		NP_001353103.1	RRMx3	11	0	2	RBPDB/QuickGO	Found
80004	ESRP2	epithelial splicing regulatory protein 2	RBM35B	NP_001352193.1	RRMx3	8	0	0	RBPDB/AttRACT/QuickGO	Found

54845	ESRP1	epithelial splicing regulatory protein 1	RBM35A; RMB35A; DFNBP109	NP_060167.2	RRMx3	6	0	0	RBPDB/AttrACT/QuickGO	Found
22827	PUF60	poly(U) binding splicing factor 60	FIR; VRJS; RoBPI; SIAHBP1	NP_510965.1	RRMx3	6	0	0	RBPDB/QuickGO	Found
29890	RBM15B	RNA binding motif protein 15B	OTT3; HsOTT3; HUMAGCGB	NP_037418.3	RRMx3	6	1	0	RBPDB/QuickGO	Found
11189	CELF3	CUGBP Elav-like family member 3	CAGH4; ERDA4; ETR-1; TNRC4; BRUNOL1	NP_009116.3	RRMx3	5	0	0	QuickGO	Found
56853	CELF4	CUGBP Elav-like family member 4	CELF-4; BRUNOL4	NP_001340669.1	RRMx3	5	0	0	AttrACT/QuickGO	Found
60680	CELF5	CUGBP Elav-like family member 5	CELF-5; BRUNOL5; BRUNOL-5	NP_068757.2	RRMx3	5	0	0	AttrACT	Found
166863	RBM46	RNA binding motif protein 46	CT68	NP_659416.1	RRMx3	5	0	1	RBPDB/AttrACT	Not found
23013	SPEN	spen family transcriptional repressor	MINT; SHARP; RBM15C; HIAA0929	NP_055816.2	RRMx4	37	0	1	RBPDB/QuickGO	Found
10137	RBM12	RNA binding motif protein 12	SWAN; SCZD19; HRIHFB2091	NP_006038.2	RRMx4	18	0	0	RBPDB/QuickGO	Found
80336	PABPC1L	poly(A) binding protein cytoplasmic 1 like	EPAB; PABPC1L1; C20orf119; dJ1069P2.3	NP_001118228.1	RRMx4	6	0	1	RBPDB	Not found
60677	CELF6	CUGBP Elav-like family member 6	BRUNOL6	NP_443072.3	RRMx5	6	0	0	AttrACT	Not found
9904	RBM19	RNA binding motif protein 19	Mrd1	NP_001140171.1	RRMx6	5	0	0	RBPDB/QuickGO	Found
57805	CCAR2	cell cycle and apoptosis regulator 2	DBC1; DBC-1; NET35; p30DBC; p30 DBC; KIAA1967	NP_066997.3	S1	7	2	1	QuickGO	Found
1659	DHX8	DEAH-box helicase 8	DDX8; Dhr2; HRH1; PRP22; PRPF22	NP_004932.1	S1	7	1	0	RBPDB/QuickGO	Found
6830	SUPT6H	SPT6 homolog, histone chaperone and transcription elongation factor	SPT6; SPT6H; emb-5	NP_001307684.1	S1	5	1	0	RBPDB/QuickGO	Found
55095	SAMD4B	sterile alpha motif domain containing 4B	SMGB; Smaug2	NP_060498.2	SAM	7	1	0	RBPDB/QuickGO	Not found
201191	SAMD14	sterile alpha motif domain containing 14		NP_777580.1	SAM	6	0	0	RBPDB	Not found

10992	SF3B2	splicing factor 3b subunit 2	Cus1; SF3b1; SAP145; SF3B145; SF3b150	NP_006833.2	SAP	17	1	1	QuickGO	Found
11100	HNRNPU L1	heterogeneous nuclear ribonucleoprotein U like 1	E1BAP5; E1B-AP5; HNRPUL1	NP_008971.2	SAP; SPRY	12	0	0	QuickGO	Found
3192	HNRNPU	heterogeneous nuclear ribonucleoprotein U	SAFA; HNRPU; SAF-A; U21.1; pp120; EIEE54; GRIP120; hnRNP U; HNRNPU-AS1	NP_114032.2	SAP; SPRY	7	0	1	AttrACT/QuickGO	Found
10523	CHERP	calcium homeostasis endoplasmic reticulum protein	SRA1; DAN16; SCAF6	NP_006378.3	SURP	22	1	1	RBPDB/QuickGO	Not found
10291	SF3A1	splicing factor 3a subunit 1	PRP21; PRPF21; SAP114; SF3A120	NP_005868.1	SURPx2	21	0	0	RBPDB/QuickGO	Found
23518	R3HDM1	R3H domain containing 1	R3HDM	NP_00126972.7.1	SUZ	14	0	0	QuickGO	Found
7011	TEP1	telomerase associated protein 1	TP1; TLP1; p240; TROVE1; VAULT2	NP_009041.2	TROVE	12	1	4	RBPDB	Found
25929	GEMIN5	gem nuclear organelle associated protein 5	GEMIN-5	NP_056280.2	WD40_repeat	9	2	0	QuickGO	Found
64848	YTHDC2	YTH domain containing 2	CAHL; hYTHDC2	NP_073739.3	YTH	8	0	1	RBPDB/QuickGO	Found
51441	YTHDF2	YTH N6-methyladenosine RNA binding protein 2	CAHL; HGRG8; NY-REN-2	NP_057342.2	YTH	5	0	0	RBPDB/QuickGO	Found
25394 3	YTHDF3	YTH N6-methyladenosine RNA binding protein 3		NP_689971.4	YTH	5	0	0	RBPDB/QuickGO	Found
54915	YTHDF1	YTH N6-methyladenosine RNA binding protein 1	C20orf21	NP_060268.2	YTH	7	0	0	RBPDB/QuickGO	Not found
23131	GPATCH8	G-patch domain containing 8	GPATC8; KIAA0553	NP_00100290.9.1	zf-C2H2	14	0	1	QuickGO	Found
8175	SF3A2	splicing factor 3a subunit 2	PRP11; SAP62; PRPF11; SF3a66	NP_009096.2	Znf_C2H2	32	0	0	QuickGO	Found
8470	SORBS2	sorbin and SH3 domain containing 2	ARGBP2; PRO0618	NP_00125770.0.1	Znf_C2H2	14	0	3	QuickGO	Found
6631	SNRPC	small nuclear ribonucleoprotein polypeptide C	U1C; Yhc1	NP_003084.1	Znf_C2H2	9	0	0	RBPDB/QuickGO	Found
90850	ZNF598	zinc finger protein 598	HEL2	NP_835461.2	Znf_C2H2	11	1	1	QuickGO	Not found
85441	HELZ2	helicase with zinc finger 2	PDIP-1; PRIC285	NP_00103241.2.2	Znf_C2H2	9	0	1	QuickGO	Not found
79724	ZNF768	zinc finger protein 768		NP_078947.3	Znf_C2H2x10	10	2	0	QuickGO	Found

29803	REPIN1	replication initiator 1	AP4; RIP60; ZNF464; Zfp464	NP_037532.2	Znf_C2H2x15	7	1	0	QuickGO	Found
7756	ZNF207	zinc finger protein 207	BuGZ; hBuGZ	NP_00109197 7.1	Znf_C2H2x2	21	0	0	QuickGO	Found
27332	ZNF638	zinc finger protein 638	ZFML; NP220; Zfp638	NP_00101497 2.1	Znf_C2H2x2; RRMx2	8	1	0	RBPDB/AttRACT/Quick GO	Found
23217	ZFR2	zinc finger RNA binding protein 2	KIAA1086	NP_055989.1	Znf_C2H2x3	20	0	1	RBPDB	Found
25946	ZNF385A	zinc finger protein 385A	HZF; RZF; ZFP385; ZNF385	NP_00112443 9.1	Znf_C2H2x3	8	2	0	QuickGO	Found
16303 3	ZNF579	zinc finger protein 579		NP_689813.2	Znf_C2H2x8	12	0	3	QuickGO	Found
5514	PPP1R10	protein phosphatase 1 regulatory subunit 10	p99; FB19; R111; CAT53; PNUIS; PP1R10	NP_002705.2	Znf_CCCH	17	0	3	RBPDB/QuickGO	Found
12424 5	ZC3H18	zinc finger CCCH-type containing 18	NHN1	NP_00128126 9.1	Znf_CCCH	16	0	1	RBPDB/QuickGO	Found
23144	ZC3H3	zinc finger CCCH-type containing 3	ZC3HDC3	NP_055932.2	Znf_CCCH	14	0	2	RBPDB	Found
19644 1	ZFC3H1	zinc finger C3H1-type containing	CSRC2; PSRC2; CCDC131	NP_659419.3	Znf_CCCH	13	0	1	QuickGO	Found
80149	ZC3H12A	zinc finger CCCH-type containing 12A	Reg1; MCPIP; MCPIP1; MCPIP-1; dJ423B22.1	NP_00131047 9.1	Znf_CCCH	12	0	2	RBPDB/QuickGO	Found
34015 2	ZC3H12D	zinc finger CCCH-type containing 12D	TFL; p34; MCPIP4; C6orf95; dJ281H8.1	NP_997243.2	Znf_CCCH	10	2	0	RBPDB	Found
23091	ZC3H13	zinc finger CCCH-type containing 13	Xio; KIAA0853	NP_00107025 6.1	Znf_CCCH	9	1	1	RBPDB/QuickGO	Found
9931	HELZ	helicase with zinc finger	DHRC; DRHC; HUMORF5	NP_00131737 6.1	Znf_CCCH	21	1	4	RBPDB/QuickGO	Not found
85463	ZC3H12C	zinc finger CCCH-type containing 12C	MCPIP3	NP_203748.1	Znf_CCCH	7	1	2	RBPDB	Not found
94059	LENG9	leukocyte receptor cluster member 9		NP_945339.2	Znf_CCCH	6	0	1	RBPDB	Not found
80742	PRR3	proline rich 3	CAT56	NP_079539.2	Znf_CCCH	6	0	1	RBPDB/QuickGO	Not found
55621	TRMT1	tRNA methyltransferase 1	TRM1; MRT68	NP_060192.1	Znf_CCCH	6	0	0	RBPDB/QuickGO	Not found
34055 4	ZC3H12B	zinc finger CCCH-type containing 12B	MCPIP2; CXorf32	NP_00101088 8.3	Znf_CCCH	6	1	0	RBPDB	Not found
14904 1	RC3H1	ring finger and CCCH-type domains 1	RNF198; ROQUIN	NP_00128777 9.1	Znf_CCCH; Znf_RING	19	4	0	RBPDB/AttRACT/Quick GO	Not found

54542	RC3H2	ring finger and CCCH-type domains 2	MNAB; RNF164	NP_001094058.1	Znf_CCCH; Znf_RING	13	1	0	RBPDB/QuickGO	Not found
23211	ZC3H4	zinc finger CCCH-type containing 4	C19orf7	NP_055983.1	Znf_CCCHx2	39	1	1	RBPDB/QuickGO	Found
376940	ZC3H6	zinc finger CCCH-type containing 6	ZC3HDC6	NP_940983.2	Znf_CCCHx2	14	0	0	RBPDB	Found
7538	ZFP36	ZFP36 ring finger protein	TTP; GOS24; GOS24; TIS11; NUP475; zfp-36; RNF162A	NP_003398.3	Znf_CCCHx2	10	1	0	RBPDB/AttRACT/QuickGO	Found
79882	ZC3H14	zinc finger CCCH-type containing 14	SUT2; MRT56; UKp68; MSUT-2; NY-REN-37	NP_079100.2	Znf_CCCHx2	8	0	1	RBPDB/QuickGO	Found
678	ZFP36L2	ZFP36 ring finger protein like 2	BRF2; ERF2; ERF-2; TIS11D; RNF162C	NP_008818.3	Znf_CCCHx2	9	0	0	RBPDB/AttRACT/QuickGO	Not found
23318	TUT4	terminal uridylyl transferase 4	PAPD3; TENT3A; ZCCHC11	NP_001009881.1	Znf_CCCHx3	15	3	0	QuickGO	Found
64718	UNKL	unk like zinc finger	ZC3H5L; C16orf28; ZC3HDC5L	NP_001180317.2	Znf_CCCHx3	8	1	1	RBPDB	Not found
84872	ZC3H10	zinc finger CCCH-type containing 10	ZC3HDC10	NP_116175.1	Znf_CCCHx3	5	0	0	RBPDB/AttRACT/QuickGO	Not found
7681	MKRN3	makorin ring finger protein 3	CPPB2; D15S9; RNF63; ZFP127; ZNF127	NP_005655.1	Znf_CCCHx3; Znf_RING	6	0	1	RBPDB	Not found
4154	MBNL1	muscleblind like splicing regulator 1	EXP; MBNL	NP_066368.2	Znf_CCCHx4	6	0	1	RBPDB/AttRACT/QuickGO	Found
10150	MBNL2	muscleblind like splicing regulator 2	MBLL; MBLL39; PRO2032	NP_659002.1	Znf_CCCHx4	5	0	0	RBPDB/QuickGO	Found
55796	MBNL3	muscleblind like splicing regulator 3	CHCR; MBLX; MBXL; MBLX39	NP_060858.2	Znf_CCCHx4	6	0	0	RBPDB/QuickGO	Not found
23264	ZC3H7B	zinc finger CCCH-type containing 7B	RoXaN; ROXAN1	NP_060060.3	Znf_CCCHx5	9	0	0	RBPDB/QuickGO	Not found
85451	UNK	unk zinc finger	ZC3H5; UNKEMPT; ZC3HDC5	NP_001073888.2	Znf_CCCHx5	8	0	0	RBPDB/QuickGO	Not found
5930	RBBP6	RB binding protein 6, ubiquitin ligase	PACT; MY038; P2P-R; RBQ-1; SNAMA	NP_008841.2	Znf_CCHC	13	0	2	QuickGO	Found
23089	PEG10	paternally expressed 10	EDR; HB-1; Mar2; RTL2; MEF3L; Mart2; RGAG3; SIRH1	NP_001165908.1	Znf_CCHC	12	0	1	QuickGO	Found
55596	ZCCHC8	zinc finger CCHC-type containing 8		NP_060082.2	Znf_CCHC	6	0	0	QuickGO	Found

79670	TUT7	terminal uridylyl transferase 7	PAPD6; TENT3B; ZCCHC6	NP_078893.2	Znf_CCHCx3	7	3	0	QuickGO	Found
84186	ZCCHC7	zinc finger CCHC-type containing 7	AIR1; HSPC086	NP_001276050.1	Znf_CCHCx4	5	0	1	QuickGO	Found
9169	SCAF11	SR-related CTD associated factor 11	SIP1; CASP11; SFRS2IP; SRRP129; SRSF2IP	NP_004710.2	Znf_RING	5	0	0	QuickGO	Found
9666	DZIP3	DAZ interacting zinc finger protein 3	UURF2; PPP1R66; hRUL138	NP_055463.1	Znf_RING	6	0	1	QuickGO	Not found
131405	TRIM71	tripartite motif containing 71	LIN41; LIN-41	NP_001034200.1	Znf_RING	5	1	1	QuickGO	Not found
10270	AKAP8	A-kinase anchoring protein 8	AKAP-8; AKAP95; AKAP 95; AKAP-95	NP_005849.1	Znf-C2H2	5	1	0	QuickGO	Found
58508	KMT2C	lysine methyltransferase 2C	HALR; MLL3; KLEFS2	NP_733751.2	Znf-RanBP2	62	2	3	QuickGO	Found
7916	PRRC2A	proline rich coiled-coil 2A	G2; BAT2; D6S51; D6S51E	NP_004629.3		68	5	6	QuickGO	Found
23524	SRRM2	serine/arginine repetitive matrix 2	CWF21; Cwc21; 300-KD; SRL300; SRm300; HSPC075	NP_057417.3		32	2	4	RBPDB/QuickGO	Found
2316	FLNA	filamin A	FLN; FMD; MNS; OPD; ABPX; CSBS; CVD1; FGS2; FLN1; NHBP; OPD1; OPD2; XLVD; XMVD; FLN-A; ABP-280	NP_001104026.1		31	0	5	QuickGO	Found
57666	FBRSL1	fibrosin like 1		NP_001136113.1		27	4	3	QuickGO	Found
51729	WBP11	WW domain binding protein 11	NPWBP; SIPP1; WBP-11; PPP1R165	NP_057396.1		27	3	2	QuickGO	Found
27043	PELP1	proline, glutamate and leucine rich protein 1	MNAR; P160	NP_055204.4		26	3	0	QuickGO	Found
11083	DIDO1	death inducer-obliterator 1	BYE1; DIO1; DATF1; DIDO2; DIDO3; DIO-1; DATF-1; C20orf158; dJ885L7.8	NP_149072.2		25	0	0	QuickGO	Found
11273	ATXN2L	ataxin 2 like	A2D; A2LG; A2LP; A2RP	NP_009176.2		24	0	0	QuickGO	Found
55339	WDR33	WD repeat domain 33	NET14; WDC146	NP_060853.3		22	2	0	QuickGO	Found

1981	EIF4G1	eukaryotic translation initiation factor 4 gamma 1	P220; EIF4F; EIF4G; EIF4GI; PARK18; EIF-4G1	NP_886553.3		21	2	1	QuickGO	Found
1107	CHD3	chromodomain helicase DNA binding protein 3	ZFH; Mi-2a; SNIBCPS; Mi2-ALPHA	NP_001005273.1		18	0	1	QuickGO	Found
54954	FAM120C	family with sequence similarity 120C	ORF34; CXorf17	NP_060318.4		18	0	0	QuickGO	Found
10075	HUWE1	HECT, UBA and WWE domain containing E3 ubiquitin protein ligase 1	MULE; Ib772; LASU1; MRXST; UREB1; HECTH9; URE-B1; ARF-BP1; HSPC272	NP_113584.3		18	0	0	QuickGO	Found
7791	ZYX	zyxin	ESP-2; HED-2	NP_003452.1		18	0	0	QuickGO	Found
8621	CDK13	cyclin dependent kinase 13	CHED; CDC2L; CDC2L5; hCDK13; CHDFIDD	NP_003709.3		17	1	0	QuickGO	Found
10915	TCERG1	transcription elongation regulator 1	Urn1; CA150; TAF2S	NP_006697.2		17	2	1	QuickGO	Found
6942	TCF20	transcription factor 20	AR1; SPBP; TCF-20	NP_005641.1		17	0	2	QuickGO	Found
57142	RTN4	reticulon 4	ASY; NSP; NOGO; RTN-X; NSP-CL; RTN4-A; RTN4-C; RTN4-B1; RTN4-B2; NI220/250; Nbla00271; Nbla10545	NP_065393.1		15	1	2	QuickGO	Found
311	ANXA11	annexin A11	ALS23; AN1; CAP50; CAP-50	NP_001148.1		13	0	0	QuickGO	Found
79080	CCDC86	coiled-coil domain containing 86		NP_077003.1		12	0	0	QuickGO	Found
25962	VIRMA	vir like m6A methyltransferase associated	MSTP054; fSAP121; KIAA1429	NP_056311.2		12	3	3	QuickGO	Found
9530	BAG4	BCL2 associated athanogene 4	SODD; BAG-4	NP_004865.1		11	1	1	QuickGO	Found
1759	DNM1	dynamin 1	DNM; EIEE31	NP_004399.2		11	2	4	QuickGO	Found
4204	MECP2	methyl-CpG binding protein 2	RS; RTS; RTT; PPMX; MR6; MRX79; MRXSL; AUTSX3; MRXS13	NP_004983.1		11	0	0	QuickGO	Found

5591	PRKDC	protein kinase, DNA-activated, catalytic subunit	HYRC; p350; DNAPK; DNP1; HYRC1; IMD26; XRCC7; DNAPKc; DNA-PKC; DNA-PKcs	NP_008835.5		11	0	0	QuickGO	Found
9898	UBAP2L	ubiquitin associated protein 2 like	NICE4; NICE-4	NP_055662.3		11	0	0	QuickGO	Found
27340	UTP20	UTP20 small subunit processome component	DRIM; 1A6/DRIM	NP_055318.2		11	0	1	QuickGO	Found
6829	SUPT5H	SPT5 homolog, DSIF elongation factor subunit	SPT5; SPT5H; Tat-CT1	NP_003160.2		10	0	1	QuickGO	Found
118	ADD1	adducin 1	ADDA	NP_001341690.1		9	0	0	QuickGO	Found
23246	BOP1	BOP1 ribosomal biogenesis factor		NP_056016.1		9	0	1	QuickGO	Found
81608	FIP1L1	factor interacting with PAPOLA and CPSF1	Rhe; FIP1; hFip1	NP_112179.2		9	0	0	QuickGO	Found
10514	MYBBP1A	MYB binding protein 1a	P160; PAP2; Pol5	NP_001099008.1		9	0	1	QuickGO	Found
22864	R3HDM2	R3H domain containing 2	CAG6; PR01365	NP_001317050.1		9	0	0	QuickGO	Found
23076	RRP1B	ribosomal RNA processing 1B	Nnp1; RRP1; NNP1L; KIAA0179; PPP1R136	NP_055871.1		9	0	1	QuickGO	Found
6949	TCOF1	treacle ribosome biogenesis factor 1	TCS; MFD1; TCS1; treacle	NP_001128715.1		9	0	0	QuickGO	Found
7015	TERT	telomerase reverse transcriptase	TP2; TRT; CMM9; EST2; TCS1; hTRT; DKCA2; DKCB4; hEST2; PFBMFT1NP_937983.2	NP_937983.2		9	2	3	QuickGO	Found
63893	UBE2O	ubiquitin conjugating enzyme E2 O	E2-230K	NP_071349.3		9	0	1	QuickGO	Found
57602	USP36	ubiquitin specific peptidase 36	DUB1	NP_001308220.1		9	1	0	QuickGO	Found
904	CCNT1	cyclin T1	CCNT; CYCT1; HIVE1	NP_001231.2		8	0	0	QuickGO	Found
4150	MAZ	MYC associated zinc finger protein	PUR1; ZF87; Pur-1; SAF-1; SAF-2; SAF-3; Zif87; ZNF801	NP_001036004.1		8	0	0	QuickGO	Found

310	ANXA7	annexin A7	SNX; ANX7; SYNEXIN	NP_004025.1		7	0	0	QuickGO	Found
984	CDK11B	cyclin dependent kinase 11B	p58; PK58; CDK11; CLK-1; CDC2L1; PITSLREA; p58CLK- 1; CDK11-p46; CDK11-p58; p58CDC2L1; CDK11- p110	NP_001778.2		7	1	1	QuickGO	Found
23019	CNOT1	CCR4-NOT transcription complex subunit 1	NOT1; CDC39; NOT1H; AD-005	NP_057368.3		7	1	0	QuickGO	Found
5394	EXOSC10	exosome component 10	p2; p3; p4; RRP6; PMSCL; Rrp6p; PM- Scl; PMSCL2; PM/Scl-100	NP_00100199 8.1		7	0	0	QuickGO	Found
3428	IFI16	interferon gamma inducible protein 16	PYHIN2; IFNGIP1	NP_00135179 6.1		7	0	0	QuickGO	Found
23028	KDM1A	lysine demethylase 1A	AOF2; CPRF; KDM1; LSD1; BHC110	NP_00100999 9.1		7	0	0	QuickGO	Found
56257	MEPCE	methylphosphate capping enzyme	BCDIN3	NP_062552.2		7	0	1	QuickGO	Found
4928	NUP98	nucleoporin 9	ADIR2; NUP96; NUP196	NP_00135205 5.1		7	1	0	QuickGO	Found
5586	PKN2	protein kinase N2	PAK2; PRK2; STK7; Pak-2; PRKCL2; PRO2042	NP_006247.1		7	0	1	QuickGO	Found
6733	SRPK2	SRSF protein kinase 2	SFRSK2	NP_00133766 9.1		7	0	0	QuickGO	Found
23272	TASOR	transcription activation suppressor	RAP140; TASOR1; se89-1; C3orf63; FAM208A	NP_00135256 4.1		7	0	1	QuickGO	Found
7175	TPR	translocated promoter region, nuclear basket protein		NP_003283.2		7	4	1	QuickGO	Found
7343	UBTF	upstream binding transcription factor	UBF; UBF1; UBF2; UBF-1; CONDBA; NOR-90	NP_055048.1		7	0	1	QuickGO	Found
8531	YBX3	Y-box binding protein 3	CSDA; DBPA; CSDA1; ZONAB	NP_003642.3		7	1	0	QuickGO	Found
1106	CHD2	chromodomain helicase DNA binding protein 2	EEOC	NP_001262.3		6	0	0	QuickGO	Found

79066	METTL16	methyltransferase like 16	METT10D	NP_076991.3		6	2	1	QuickGO	Found
9221	NOLC1	nucleolar and coiled-body phosphoprotein 1	P130; NOPP130; NOPP140; NS5ATP13	NP_001271317.1		6	0	1	QuickGO	Found
25957	PNISR	PNN interacting serine and arginine rich protein	SFRS18; HSPC306; SRrp130; C6orf111; bA98I9.2	NP_001309334.1		6	0	1	QuickGO	Found
10155	TRIM28	tripartite motif containing 28	KAP1; TF1B; RNF96; TIF1B; PPP1R157	NP_005753.1		6	0	1	QuickGO	Found
23350	U2SURP	U2 snRNP associated SURP domain containing	SR140; fSAPa	NP_001073884.1		6	2	0	QuickGO	Found
9875	URB1	URB1 ribosome biogenesis homolog	NPA1; C21orf108	NP_055640.2		6	0	1	QuickGO	Found
23	ABCF1	ATP binding cassette subfamily F member 1	ABC27; ABC50	NP_001020262.1		5	0	0	QuickGO	Found
58509	CACTIN	cactin, spliceosome C complex subunit	fSAPc; C19orf29; NY-REN-24	NP_001074012.1		5	0	1	QuickGO	Found
9343	EFTUD2	elongation factor Tu GTP binding domain containing 2	MFDM; MFDGA; Snu114; Snrp116; SNRNP116; U5-116KD	NP_004238.3		5	0	0	QuickGO	Found
57727	NCOA5	nuclear receptor coactivator 5	CIA; bA465L10.6	NP_066018.1		5	0	0	QuickGO	Found
54888	NSUN2	NOP2/Sun RNA methyltransferase 2	MISU; MRT5; SAKI; TRM4	NP_060225.4		5	0	0	QuickGO	Found
10940	POP1	POP1 homolog, ribonuclease P/MRP subunit	ANXD2	NP_001139332.1		5	0	0	QuickGO	Found
51535	PPHLN1	periphilin 1	CR; HSPC206; HSPC232	NP_057572.5		5	0	0	QuickGO	Found
57109	REXO4	REX4 homolog, 3'-5' exonuclease	REX4; XPMC2; XPMC2H	NP_065118.2		5	0	0	QuickGO	Found
57794	SUGP1	SURP and G-patch domain containing 1	RBP; SF4; F23858	NP_757386.2		5	0	0	QuickGO	Found
81550	TDRD3	tudor domain containing 3		NP_001139542.1		5	2	0	QuickGO	Found
9100	USP10	ubiquitin specific peptidase 10	UBPO	NP_001259004.1		5	0	0	QuickGO	Found
134430	WDR36	WD repeat domain 36	GLC1G; UTP21; TAWDRP; TA-WDRP	NP_644810.1		5	0	0	QuickGO	Found

55135	WRAP53	WD repeat containing antisense to TP53	DKCB3; TCAB1; WDR79	NP_060551.2		5	0	1	QuickGO	Found
23215	PRRC2C	proline rich coiled-coil 2C	XTP2; BAT2D1; BAT2L2; BAT2-iso	NP_055987.2		34	2	3	QuickGO	Not found
2317	FLNB	filamin B	AOI; FH1; SCT; TAP; LRS1; TABP; FLN-B; FLN1L; ABP-278; ABP-280	NP_00115778.9.1		32	0	6	QuickGO	Not found
7373	COL14A1	collagen type XIV alpha 1 chain	UND	NP_066933.1		28	1	1	QuickGO	Not found
6311	ATXN2	ataxin 2	ATX2; SCA2; TNRC13	NP_002964.4		26	2	2	QuickGO	Not found
7145	TNS1	tensin 1	TNS; MXRA6; MST091; MST122; MST127; MSTP091; MSTP122; MSTP127; PPP1R155	NP_072174.3		25	0	3	QuickGO	Not found
1729	DIAPH1	diaphanous related formin 1	DIA1; DRF1; DFNA1; LFHL1; SCBMS; hDIA1	NP_005210.3		24	1	1	QuickGO	Not found
165904	XIRP1	xin actin binding repeat containing 1	Xin; CMYA1	NP_919269.2		22	1	0	QuickGO	Not found
4035	LRP1	LDL receptor related protein 1	APR; KPA; LRP; A2MR; CD91; APOER; LRP1A; TGFBFR5; IGFBP3R; IGFBP-3R; IGFBP3R1	NP_002323.2		20	1	2	QuickGO	Not found
79868	ALG13	ALG13 UDP-N-acetylglucosaminyltransferase subunit	CDG1S; EIEE36; MDS031; TDRD13; CXorf45; GLT28D1; YGL047W	NP_00109339.2.1		19	0	1	QuickGO	Not found
8672	EIF4G3	eukaryotic translation initiation factor 4 gamma 3	eIF4G 3; eIF4GII; eIF-4G 3	NP_00118573.0.1		18	1	1	QuickGO	Not found
84726	PRRC2B	proline rich coiled-coil 2B	BAT2L; BAT2L1; LQFBS-1; KIAA0515	NP_037450.2		18	2	5	QuickGO	Not found
22999	RIMS1	regulating synaptic membrane exocytosis 1	RIM; RIM1; CORD7; RAB3IP2	NP_055804.2		18	3	3	QuickGO	Not found
23255	MTCL1	microtubule crosslinking factor 1	SOGA2; CCDC165; KIAA0802	NP_056025.2		17	2	0	QuickGO	Not found

22862	FNDC3A	fibronectin type III domain containing 3A	HUGO; FNDC3; bA203116.1; bA203116.5	NP_00107314 1.1		13	0	2	QuickGO	Not found
2194	FASN	fatty acid synthase	FAS; OA-519; SDR27	NP_004095.4		12	0	1	QuickGO	Not found
10749	KIF1C	kinesin family member 1C	SAX2; LTXS1; SATX2; SPAX2; SPG58	NP_006603.2		12	1	2	QuickGO	Not found
11196	SEC23IP	SEC23 interacting protein	P125; P125A; MSTP053	NP_009121.1		12	0	0	QuickGO	Not found
23196	FAM120A	family with sequence similarity 120A	OSSA; C9orf10; HBVPTPAP	NP_055427.2		11	1	1	QuickGO	Not found
1778	DYNC1H1	dynein cytoplasmic 1 heavy chain 1	p22; DHC1; DNCL; DYHC; HL-3; CMT20; DHC1a; DNCH1; DNECL; Dnchc1; SMALED1	NP_001367.2		10	0	1	QuickGO	Not found
831	CAST	calpastatin	BS-17; PLACK	NP_001741.4		9	0	0	QuickGO	Not found
26093	CCDC9	coiled-coil domain containing 9		NP_056418.1		9	1	0	QuickGO	Not found
26058	GIGYF2	GRB10 interacting GYF protein 2	GYF2; PERQ2; PERQ3; PARK11; TNRC15	NP_00109661 7.1		9	1	0	QuickGO	Not found
4134	MAP4	microtubule associated protein 4		NP_002366.2		9	1	0	QuickGO	Not found
54726	OTUD4	OTU deubiquitinase 4	HIN1; DUBA6; HSHIN1	NP_00135298 6.1		9	1	0	QuickGO	Not found
5339	PLEC	plectin	HD1; PCN; EBS1; EBSO; PLTN; EBSMD; EBSND; EBSOG; EBSPA; PLEC1; LGMD2Q; PLEC1b; LGMDR17	NP_000436.2		9	0	2	QuickGO	Not found
7205	TRIP6	thyroid hormone receptor interactor 6	OIP1; OIP-1; ZRP-1; TRIP-6; TRIP6i2	NP_003293.2		9	1	0	QuickGO	Not found
25510 1	CFAP65	cilia and flagella associated protein 65	CCDC108	NP_919278.2		8	0	0	QuickGO	Not found
64778	FNDC3B	fibronectin type III domain containing 3B	FAD104; PRO4979; YVTM2421	NP_073600.3		8	1	2	QuickGO	Not found
23499	MACF1	microtubule actin crosslinking factor 1	ACF7; LIS9; MACF; OFC4; ABP620	NP_036222.3		8	1	0	QuickGO	Not found

9138	ARHGEF1	Rho guanine nucleotide exchange factor 1	LSC; GEF1; LBCL2; SUB1.5; P115-RHOGEF	NP_945353.1		6	1	1	QuickGO	Not found
722	C4BPA	complement component 4 binding protein alpha	PRP; C4BP	NP_000706.1		6	0	0	QuickGO	Not found
10985	GCN1	GCN1 activator of EIF2AK4	GCN1L; GCN1L1; PRIC295	NP_006827.1		6	1	0	QuickGO	Not found
63897	HEATR6	HEAT repeat containing 6	ABC1	NP_071353.4		6	0	0	QuickGO	Not found
14998 6	LSM14B	FT005; LSM13; FAM61B; RAP55B; C20orf40; bA11M20.3	LSM family member 14B	NP_653304.2		6	0	1	QuickGO	Not found
84273	NOA1	nitric oxide associated 1	MTG3; hNOA1; C4orf14; hAtNOS1; mAtNOS1	NP_115689.1		6	1	0	QuickGO	Not found
9475	ROCK2	Rho associated coiled-coil containing protein kinase 2	ROCK-II	NP_004841.2		6	0	0	QuickGO	Not found
6238	RRBP1	ribosome binding protein 1	RRp; hES; ES130; ES/130	NP_00135254.2.1		6	0	0	QuickGO	Not found
79048	SECISBP2	SECIS binding protein 2	SBP2	NP_076982.3		6	0	0	QuickGO	Not found
11180	WDR6	WD repeat domain 6		NP_060501.4		6	0	3	QuickGO	Not found
51143	DYNC1LI1	dynein cytoplasmic 1 light intermediate chain 1	LIC1; DLC-A; DNCL11	NP_057225.2		5	0	2	QuickGO	Not found
10539	GLRX3	glutaredoxin 3	GRX3; GRX4; GLRX4; PICOT; TXNL2; TXNL3	NP_00118679.7.1		5	0	0	QuickGO	Not found
2804	GOLGB1	golgin B1	GCP; GCP372; GOLIM1	NP_00124341.5.1		5	0	0	QuickGO	Not found
23708	GSPT2	G1 to S phase transition 2	GST2; ERF3B	NP_060564.2		5	1	1	QuickGO	Not found
4644	MYO5A	myosin VA	GS1; MYO5; MYH12; MYR12	NP_000250.3		5	0	0	QuickGO	Not found
55311 5	PEF1	penta-EF-hand domain containing 1	ABP32; PEF1A	NP_036524.1		5	0	0	QuickGO	Not found
55086	RADX	RPA1 related single stranded DNA binding protein, X-linked	CXorf57	NP_060485.4		5	0	1	QuickGO	Not found
81844	TRIM56	tripartite motif containing 56	RNF109	NP_112223.1		5	0	0	QuickGO	Not found
55833	UBAP2	ubiquitin associated protein 2	UBAP-2	NP_060919.3		5	0	0	QuickGO	Not found