

Deleting interleukin-10 from myeloid cells exacerbates atherosclerosis in *ApoE*^{-/-} mice.

Marco Orecchioni^{1*}, Dennis Wolf², Vasantika Suryawanshi¹, Holger Winkels³, Kouji Kobiyama⁴, Jeffrey Makings¹, William B. Kiosses⁵, and Klaus Ley^{*1,6,7}

Affiliations

¹ La Jolla Institute for Immunology, La Jolla, CA 92037 USA

² Cardiology and Angiology I, Medical Center – University of Freiburg, Faculty of Medicine, University of Freiburg, Germany

³ Department of Cardiology, Faculty of Medicine and University Hospital Cologne, University of Cologne, Cologne, Germany

⁴ Division of Vaccine Science, Department of Microbiology and Immunology, The Institute of Medical Science, The University of Tokyo, Japan

⁵ Histology and Microscopy Core Facility, La Jolla Institute for Immunology, La Jolla, CA 92037 USA

⁶ Department of Bioengineering, University of California San Diego, La Jolla, CA, 92093, USA

⁷ Immunology Center of Georgia (IMMCG), Augusta University, Augusta, GA, 30912 USA

* Contacts: Marco Orecchioni Ph.D., Instructor, La Jolla Institute for Immunology, 9420 Athena Circle Drive, La Jolla, CA 92037, USA, (858) 405-3781 (tel.), morecchioni@lji.org; Klaus Ley, M.D., Co-Director, Immunology Center of Georgia (IMMCG). Professor of Physiology, Augusta University, 1410 Laney Walker Blvd, CN4315 Augusta, GA 30912; (858)-472-7253 (tel.); email kley@augusta.edu

Supplementary Figures

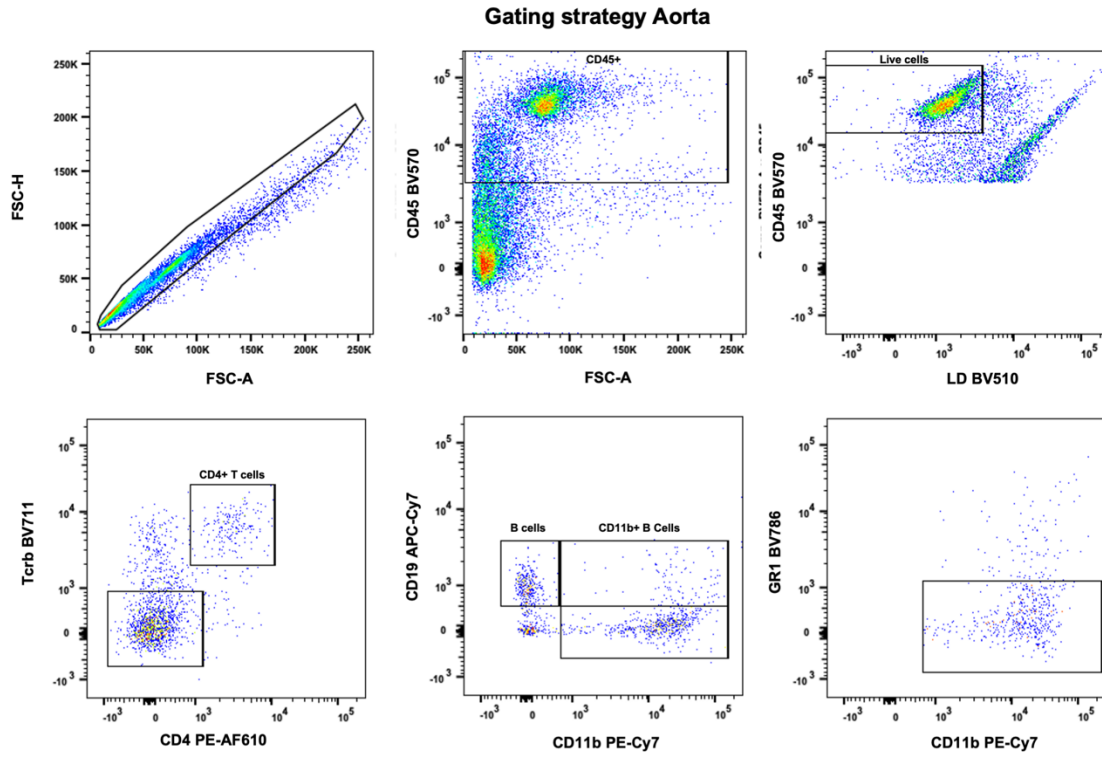


Figure S1. Aorta gating strategy. Applied gating strategy for the identification of the aortic immune cells shown as a dot plots.

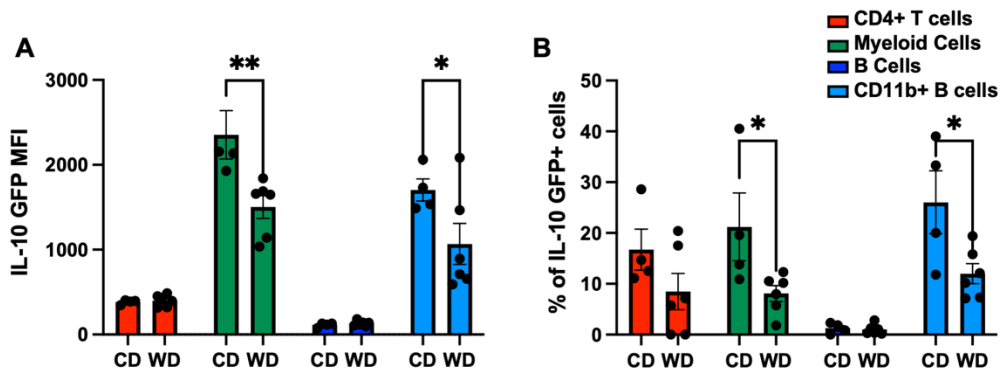


Figure S2. IL-10 expression decreases in WD fed *Vert-X Apoe^{-/-}* aortic leukocytes. IL-10 GFP⁺ expression reported as **A**) MFI or **B**) % of parent cell type in leukocyte from aorta of *Vert-X Apoe^{-/-}* mice challenged with a lipid-rich diet (WD 8 weeks, n= 5) or kept in chow diet (CD 16 weeks, n= 5). Data are presented as mean ± SEM. P value was calculated by Two-way Anova test with Tuckey's correction for multiple comparison * p < 0.05, ** p < 0.01.

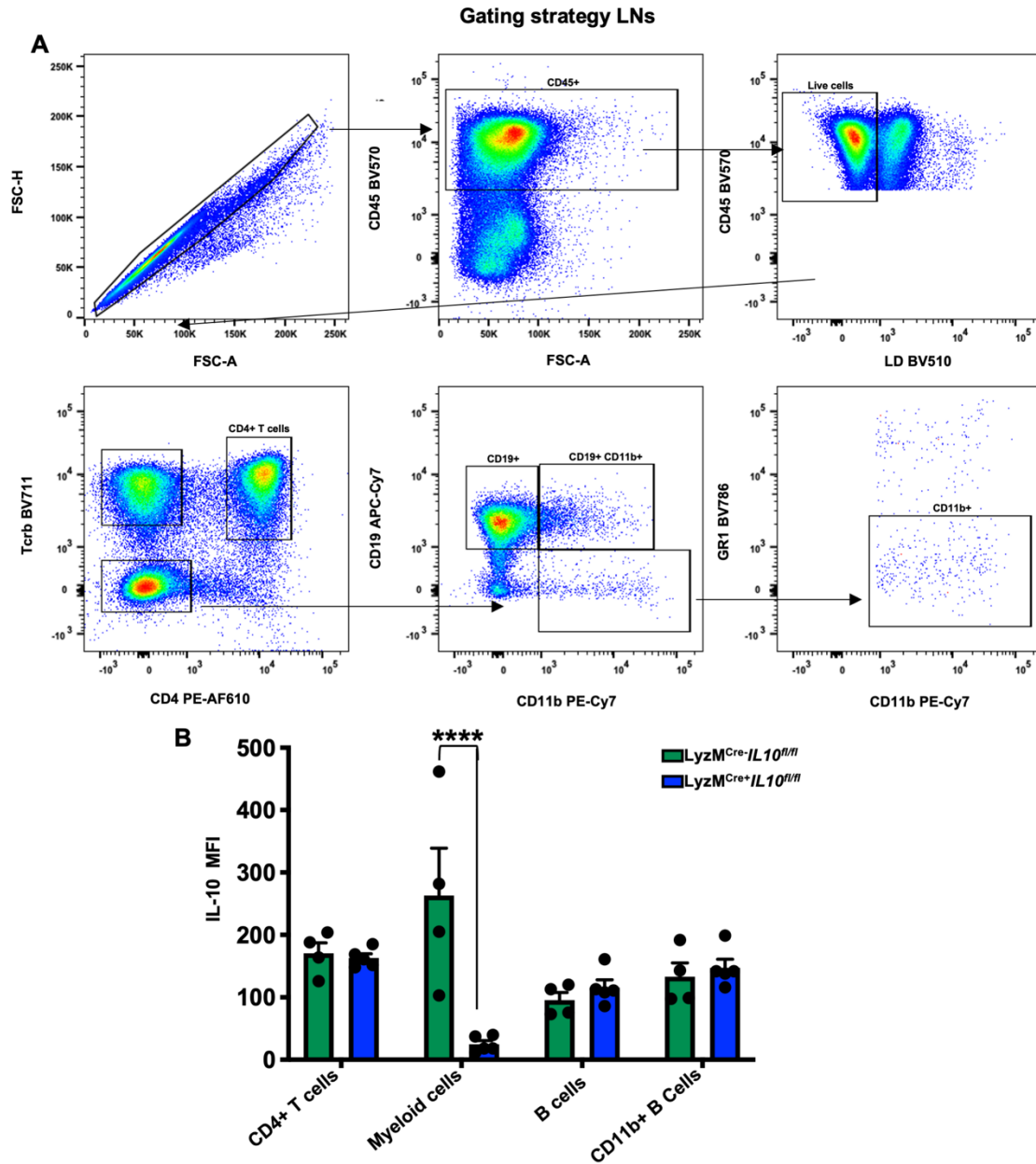


Figure S3. LNs gating strategy and myeloid IL-10 depletion specificity in *LyzM^{Cre+}IL10^{fl/fl} Apoe^{-/-}* mice. **A) Gating strategy applied for the identification of the main LN leukocyte populations shown as a dot plots. **B**) IL-10 intracellular staining in LNs harvested from in *LyzM^{Cre+}IL10^{fl/fl} Apoe^{-/-}* or *LyzM^{Cre-}IL10^{fl/fl} Apoe^{-/-}* mice (n= 4). Data are presented as mean ± SEM. P value was calculated by Two-way Anova test with Tuckey's correction for multiple comparison. **** p < 0.0001.**

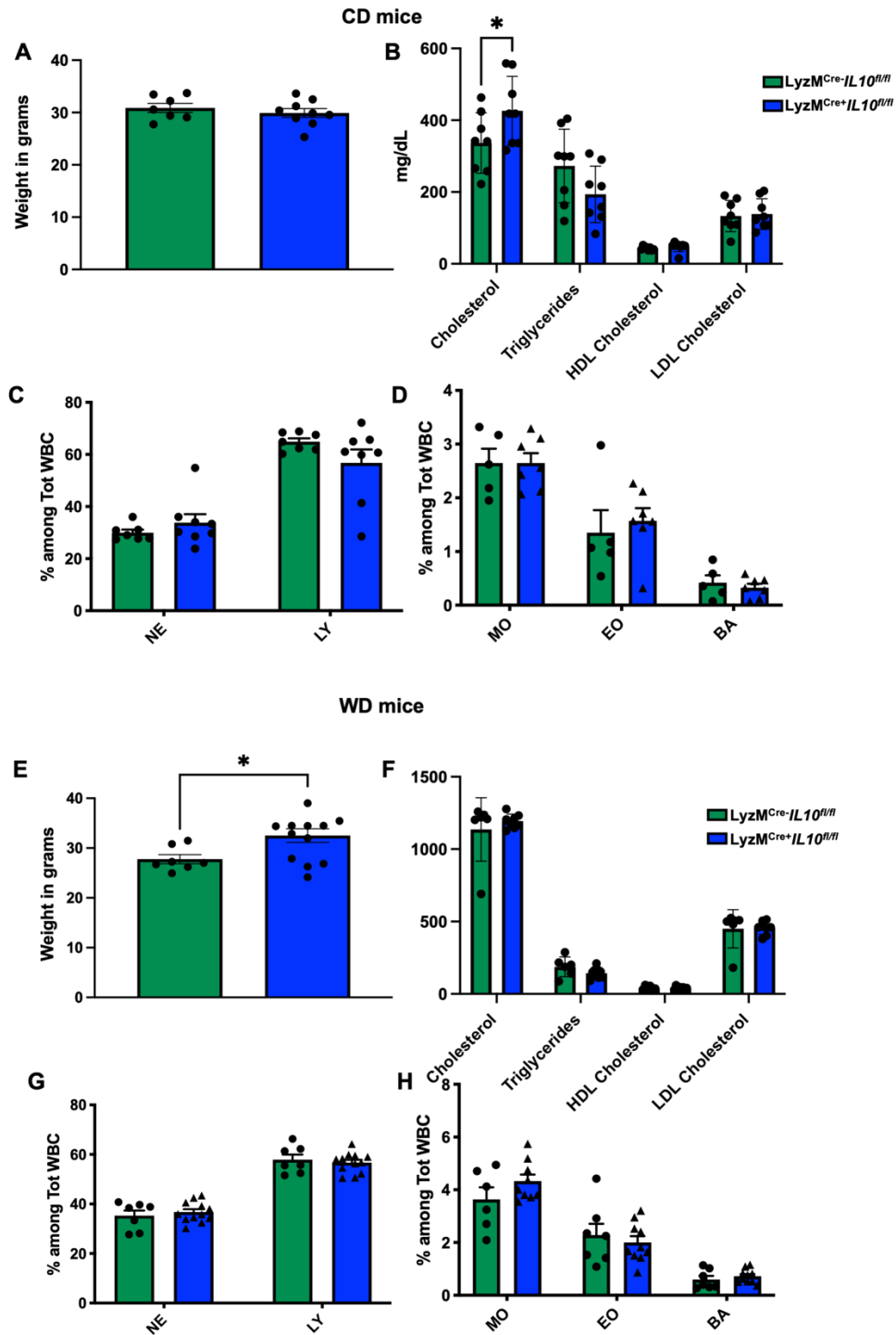


Figure S4. Body weight and hematological parameters. A-G) Body weight, plasma lipid content and hematological parameters analysis from *LyzM^{Cre}+IL10^{fl/fl} Apoe^{-/-}* or *LyzM^{Cre}-IL10^{fl/fl} Apoe^{-/-}* mice fed A-D) CD for 25 weeks (n= 5/8) or E-H) WD for 12 weeks (n= 8/11). Neutrophils (NE), Lymphocytes (LY), Monocytes (MO), Eosinophils (EO) and Basophils (BA) % among total white blood cells is reported. P value was calculated by two-way Anova with Tukey's correction for multiple comparison test. * p < 0.05.