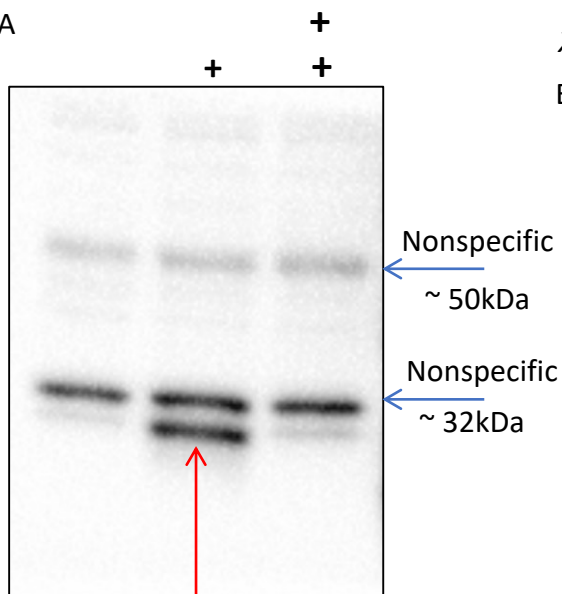


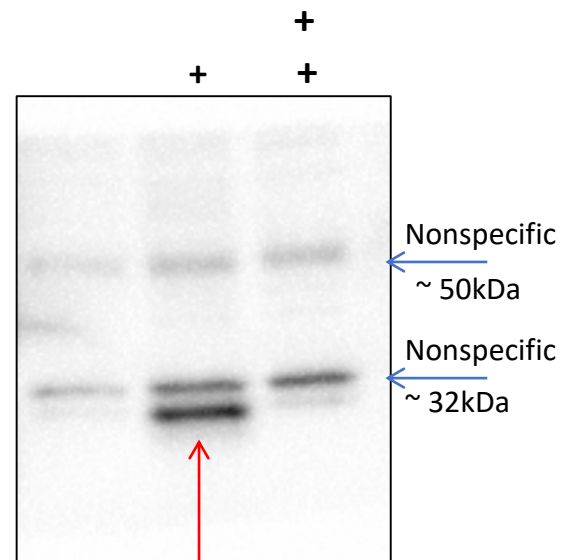
A

XBP1 siRNA
ER stress
(MDG-132)



unspliced XBP1 ~ 29kDa

XBP1 siRNA
ER stress
(ALLN)



unspliced XBP1 ~ 29kDa

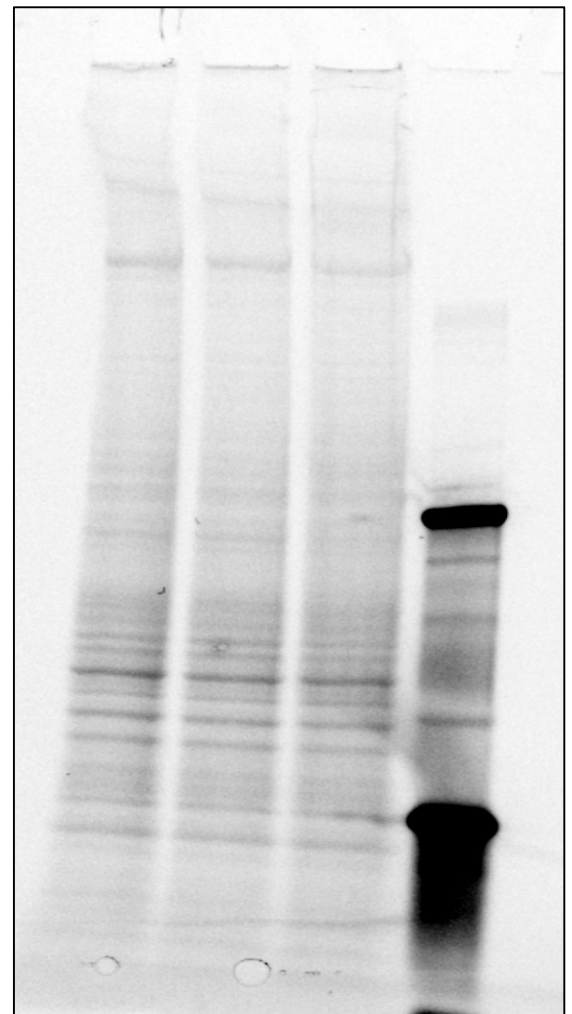
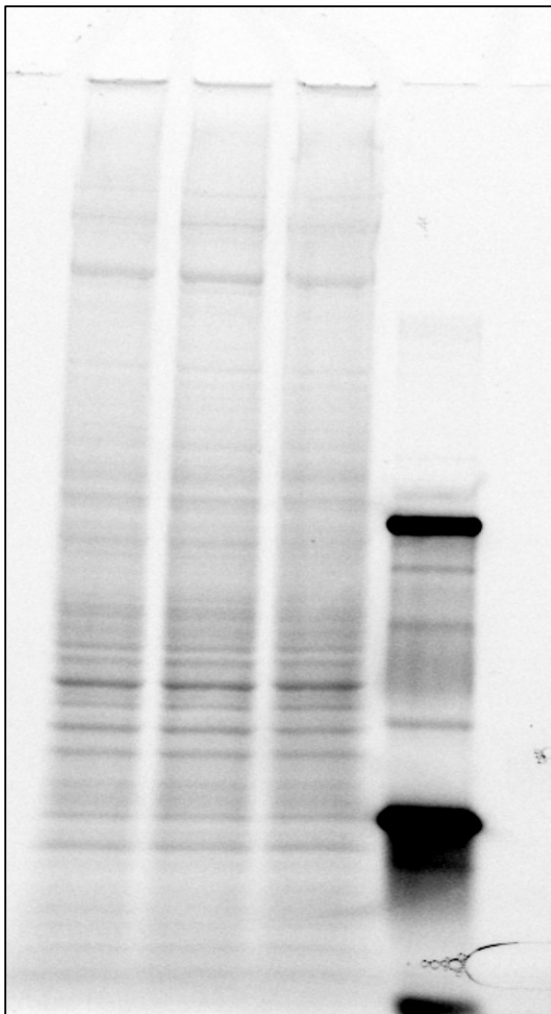


Figure S1A. Validation of antibody against **unspliced** XBP1 (NBP1-77681; Novus Biological USA, diluted at 1:700) with siRNA against XBP1 (Ambion assay id s14915). To induce ER stress and prevent proteasomal degradation of unspliced XBP1, HeLa cells were treated for 6 hours with calpain and proteasome inhibitors MDG-132 and ALLN (Sigma) at 2 μ M and 100 μ M final concentrations, respectively.

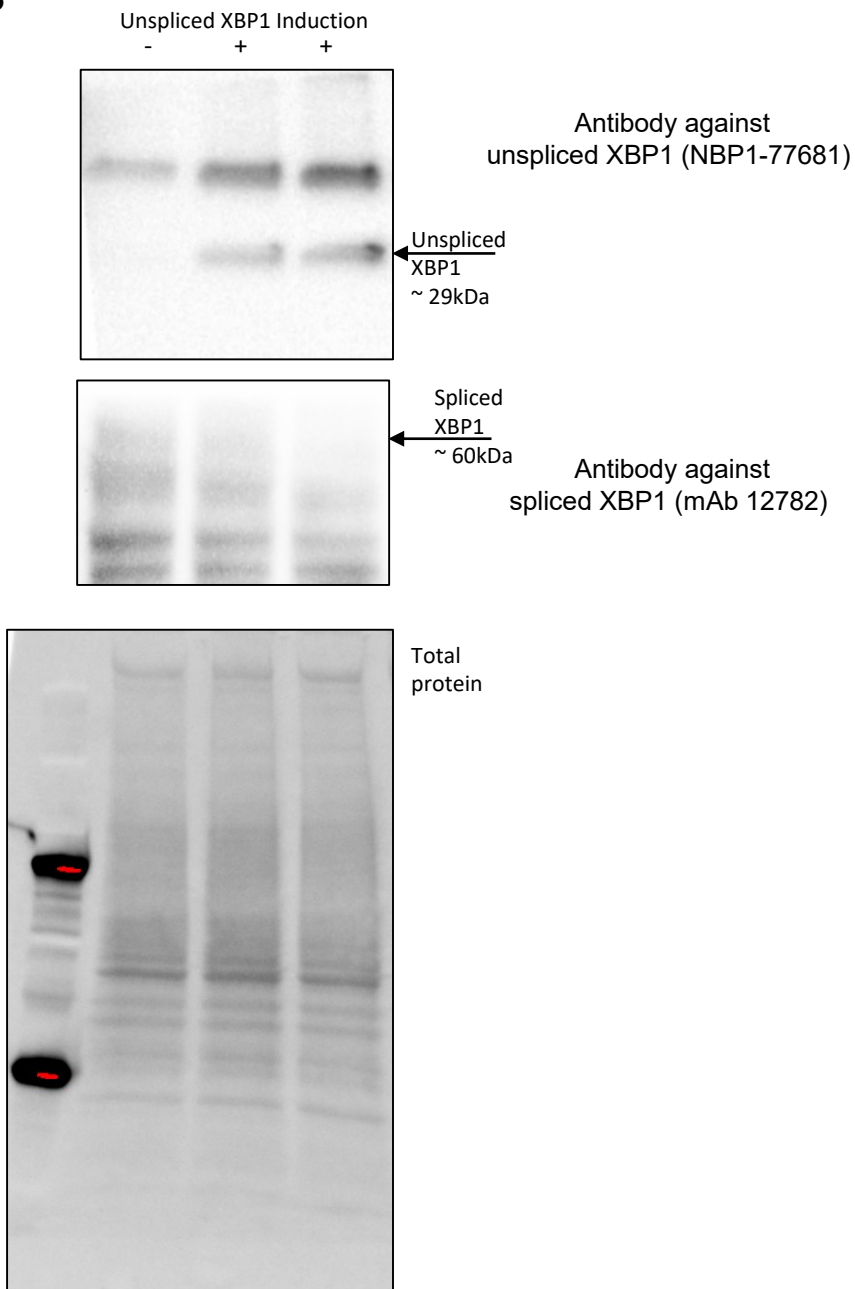
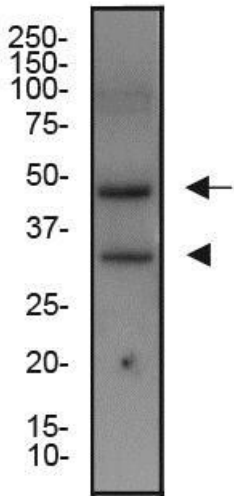
B

Figure S1B. Upon 24 hours induction, the HeLa-XBP1u cell line accumulates XBP1u but not XBP1s as shown in WB analysis.

C



Producer description:

Western Blot: XBP1 Antibody [NBP1-77681] - Total protein from HeLa cells was separated on a 12% gel by SDS-PAGE, transferred to PVDF membrane and blocked in 5% non-fat milk in TBST. The membrane was probed with 1.0 ug/ml anti-XBP1 in block buffer and detected with an anti-rabbit HRP secondary antibody using chemiluminescence. Arrow delineates XBP1s and arrowhead XBP1u.

https://www.novusbio.com/products/xbp1-antibody_nbp1-77681#protocols-faqs

Immunogen

A genomic peptide made to an internal region of the human XBP1 protein (within residues 100-250). [Swiss-Prot P17861]

Localization

Nucleus

Specificity

This antibody is specific for both XBP1s and XBP1u.

Figure S1C. Novus Biologicals description for XBP1 Antibody [NBP1-77681].