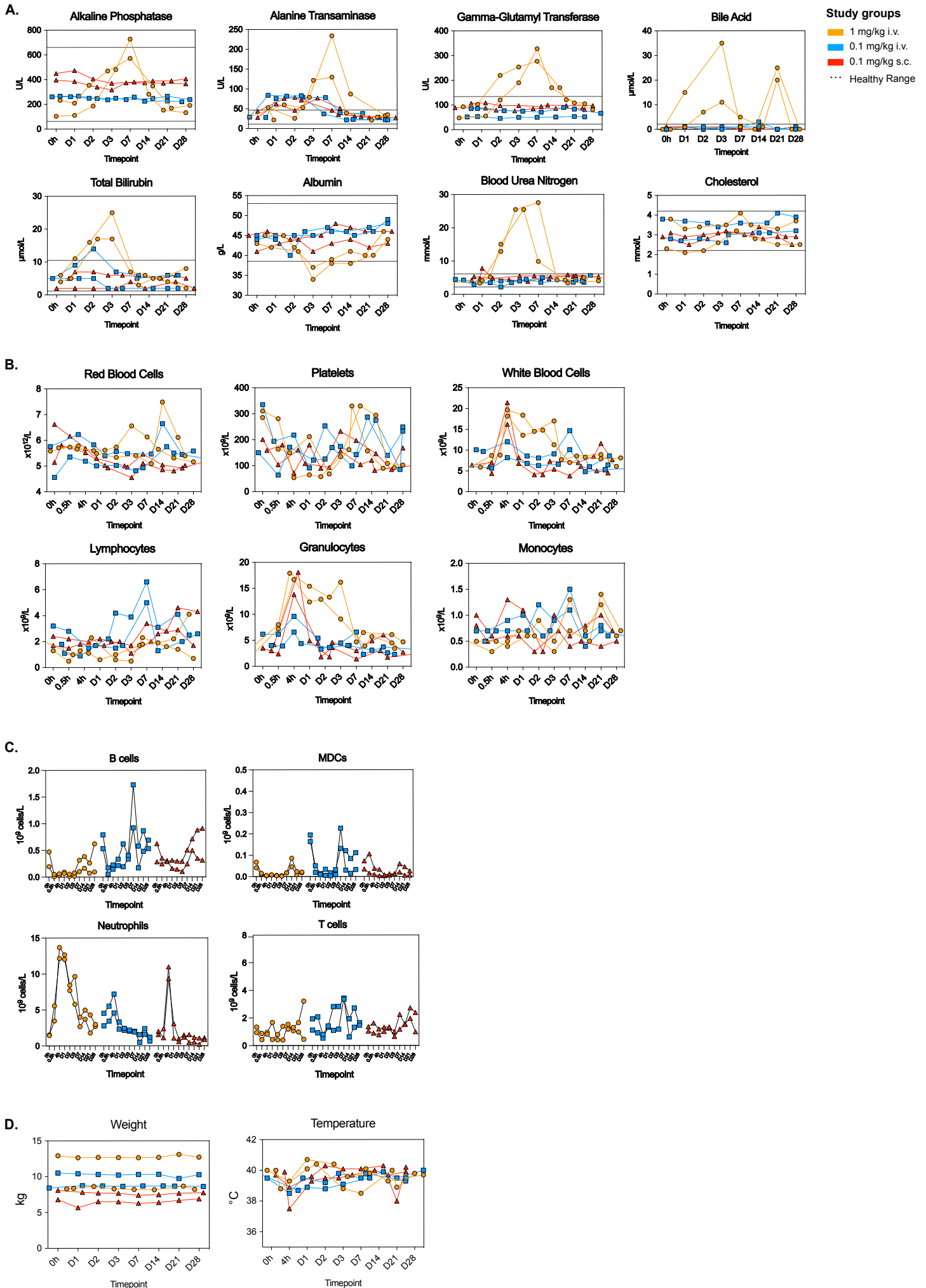
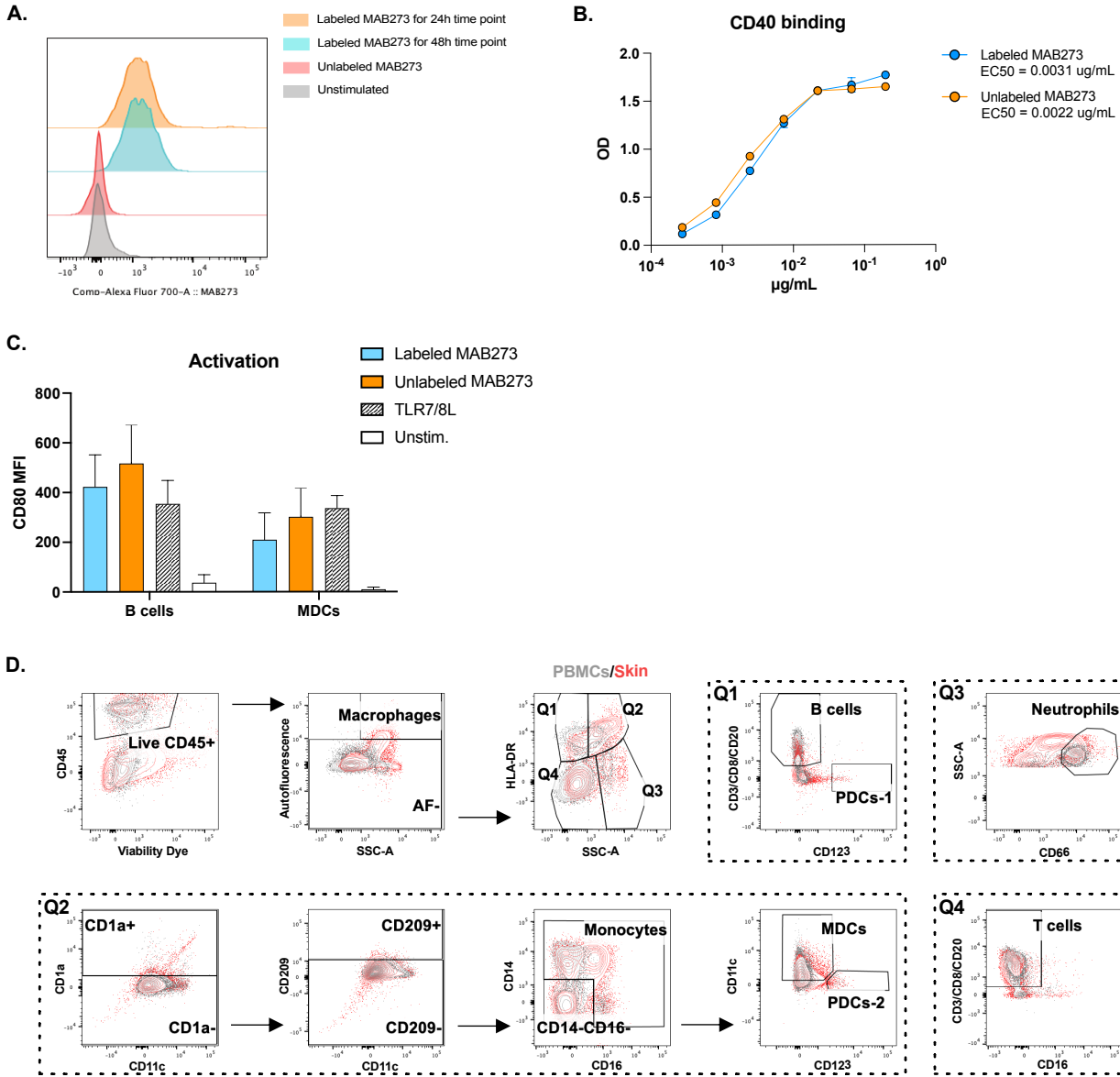


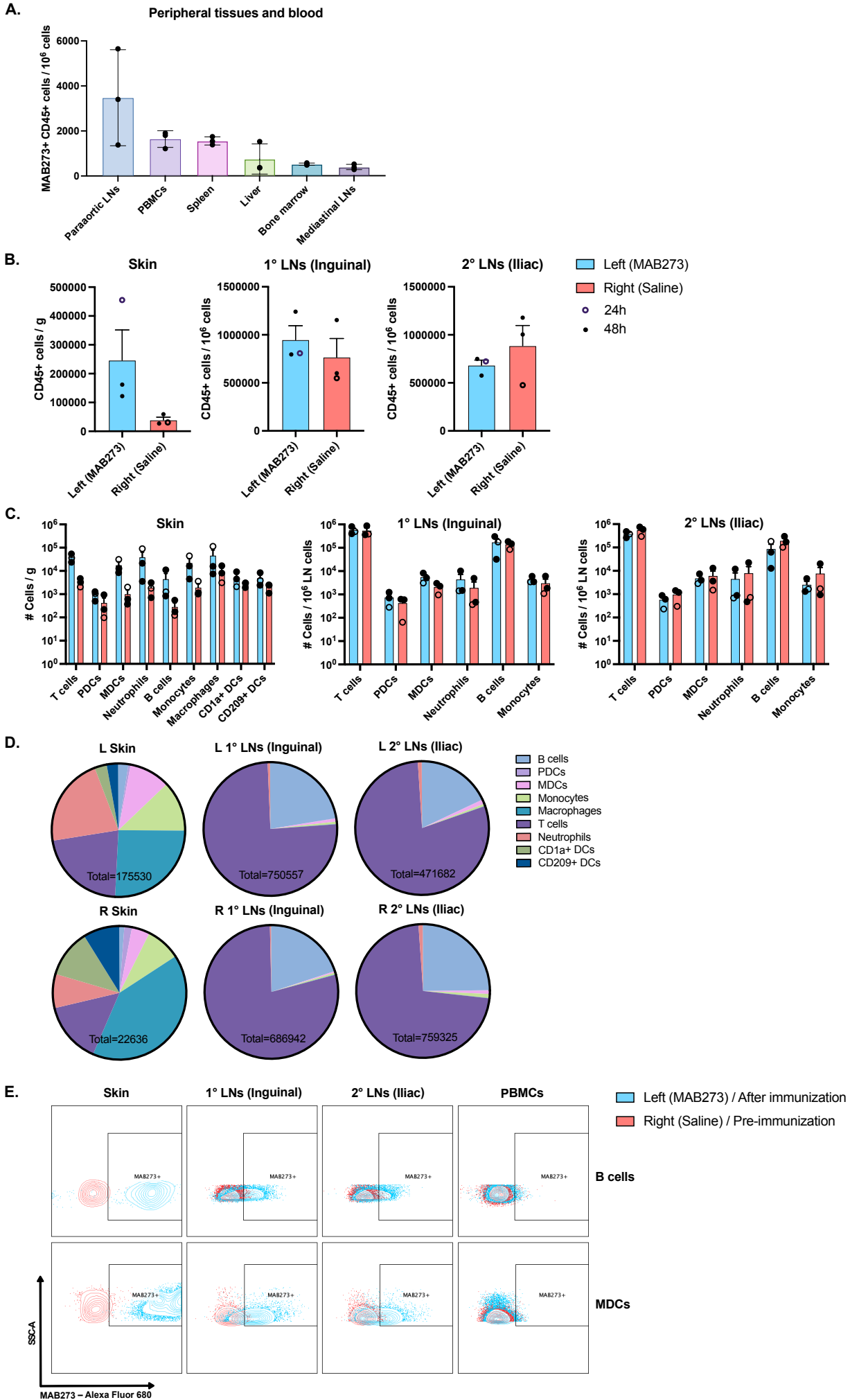
Supplementary Figure 2



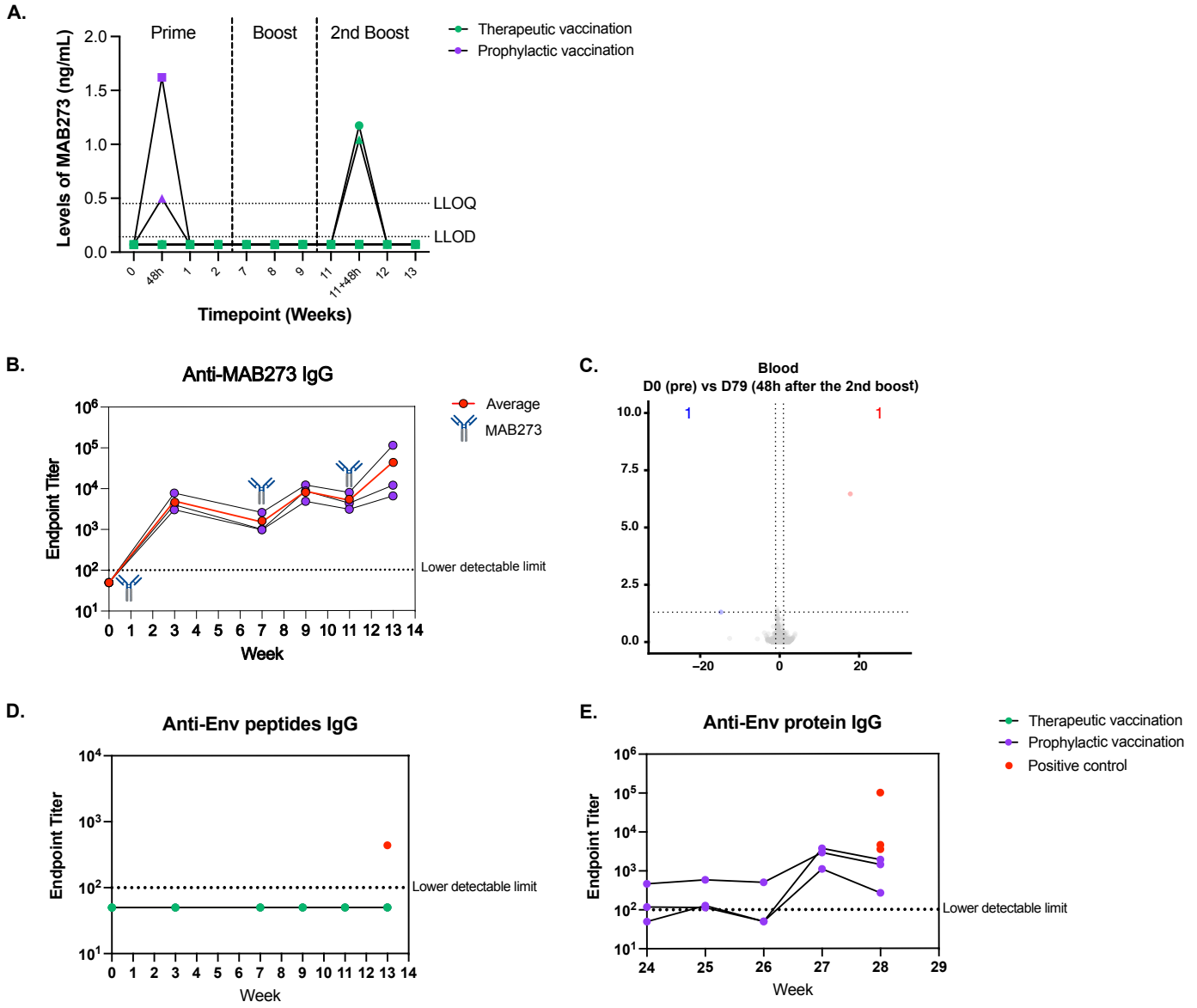
Supplementary Figure 3



Supplementary Figure 4



Supplementary Figure 5



Supplementary Table 1

Antibody	Fluorochrome	Clone	Company	Antibody	Fluorochrome	Clone	Company
Phenotype of innate immune cells				Antigen-specific T cells surface			
CD40	FITC	5C3	Biologend	OX40	BV510	L106	BD
NKq2a	PE	Z199	Beckman	CCR7	BV786	G043H7	Biologend
CD80	BV421	L307.4	BD	CD103	FITC	2G5	Beckman
CCR7	PE-Dazzle 594	G043H7	Biologend	CD8a	BV711	RPA-T8	Biologend
CD123	PerCp-Cy5.5	7G3	BD	CD4	PE-Cy5.5	S3.5	Invitrogen
CD3	APC-Cy7	SP34-2	BD	CD45RA	BV650	5H9	BD
CD66	APC	TET2	Miltenyi	Antigen-specific T cells intracellular			
CD70	BV786	Ki-24	BD	4-1BB	APC	4B4-1	BD
HLA-DR	BV650	L243	Biologend	IL-2	PE	MQ1-17H12	BD
CD11c	PE-Cy7	3.9	Biologend	CD69	ECD	TP1.55.3	Beckman
CD16	AF700	3G8	BD	CD3	APC-Cy7	SP34.2	BD
CD20	BV605	2H7	Biologend	IFNg	AF700	B27	Biologend
CD14	BV510	M5E2	Biologend	B cell proliferation			
Labeled antibody tracking				HLA-DR	PE-Cy5.5	Tu36	ThermoFisher
CD1a	PE	SK9	BD	CD3	APC-Cy7	SP34-2	BD
CD209	PerCP-Cy5.5	DCN46	BD	CD20	BV605	2H7	Biologend
CD40	FITC	5C3	Biologend	CD40	FITC	5C3	Biologend
CD11c	PE-Cy7	3.9	Biologend	CD40L competition			
CD14	BV711	M5E2	Biologend	Streptavidin	PE		Biologend
CD66	APC	TET2	Miltenyi	CD3	APC-Cy7	SP34-2	BD
CD45	BV605	D058-1283	BD	HLA-DR	PE-Cy5.5	Tu36	ThermoFisher
CCR7	PE-Dazzle 594	G043H7	Biologend	CD11c	PE-Cy7	3.9	Biologend
CD3	APC-Cy7	SP34-2	BD	CD20	BV605	2H7	Biologend
CD8	APC-Cy7	RPA-T8	BD	CD14	BV510	M5E2	Biologend
CD20	APC-Cy7	L27	BD	CD16	BV421	3G8	Biologend
HLA-DR	PE-Cy5.5	Tu36	ThermoFisher				
CD123	BV510	6H6	Biologend				
CD80	BV650	L307.4	BD				
CD16	BV421	3G8	Biologend				