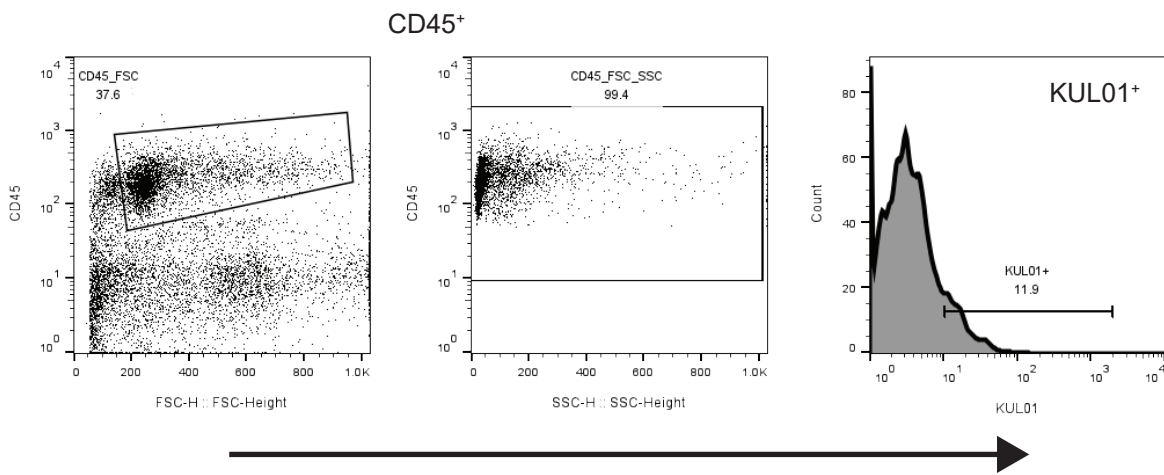
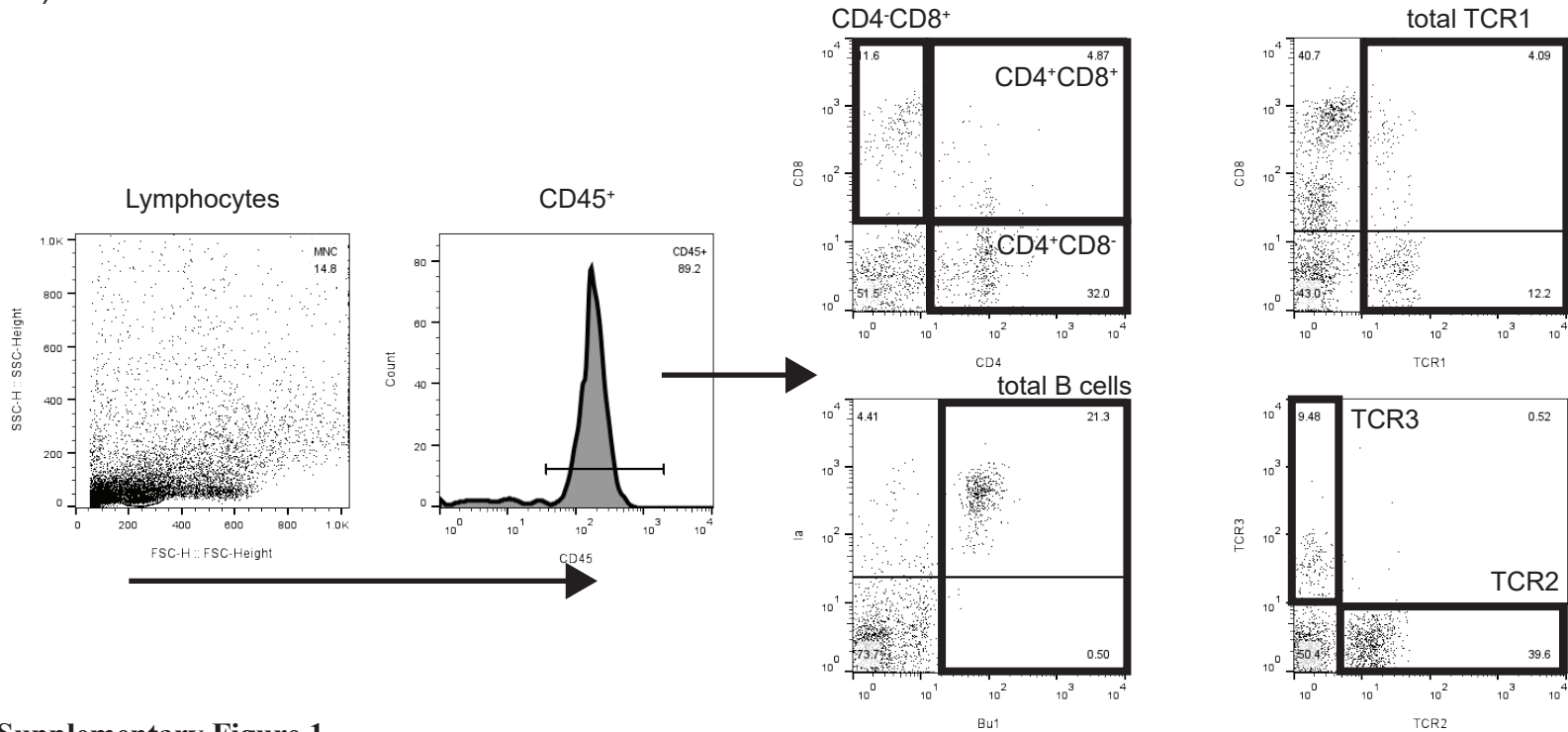


a)



b)



### Supplementary Figure 1

**Gating strategy used for flow cytometry analysis.** a) All CD45<sup>+</sup> cells were analyzed for expression of the chicken macrophage marker KUL01. b) In separate stainings CD45<sup>+</sup> lymphocytes were analyzed for expression of CD4 and CD8 $\alpha$  (top left), TCR1 (top right), chicken B cell marker Bu1 (bottom left) and TCR2 and TCR3 (bottom right).