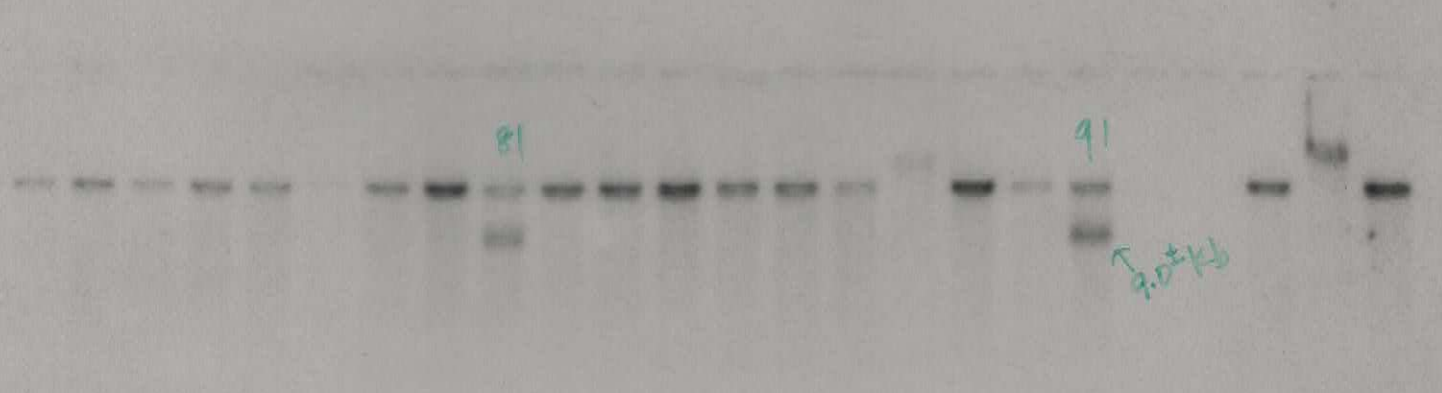
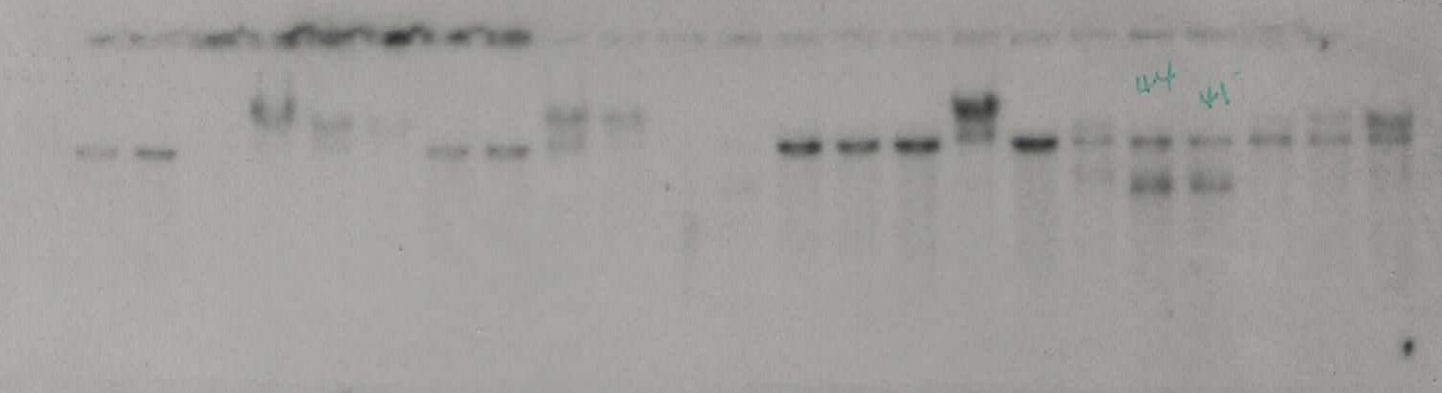


G5 1-96

EcoRI digest Rosg 25 pmol Pp, 300/1000

SrtA-G5 Flip.

100%  
100%



→ GS 17-144 EcorI digest, Rosa. prota P. 5x 9/11 exp. 7/8/18

99

101

110

112

119

122

126

137

127

181

180

160

GS → 145-192 EcorI digest, Rosa. prota P. 5x 9/11 exp. 7/8/18

**Supplementary Figure 1 | Southern blot of embryonic stem cells (ESCs) to screen for uLIPSTIC cassette insertion.** The uLIPSTIC cassette carrying the lox-stop-lox *G<sub>5</sub>Thy1.1* followed by mSrtA-PDGFR<sub>tm</sub> fused to FLAG tag was cloned into the Ai9 *Rosa26* targeting plasmid and this was used as template for homologous recombination in ESCs. Insertion of the uLIPSTIC cassette was assessed in 192 ESCs by Southern blotting using a <sup>32</sup>P-labeled probe annealing upstream of the left arm after EcoRI digestion. Wildtype ESCs show a 15.6 kb fragment, while ESCs carrying the insertion exhibit an extra EcoRI restriction site, resulting in a 7.4 kb fragment upon enzymatic digestion.