

Supplementary data

**Characterization of bioactive metabolites and antioxidant activities in solid and liquid fractions of fresh Duckweed (*Wolffia globosa*) subjected to different cell wall rupture methods**

**Nitesh Kumar Yadav<sup>1</sup>, Arun Bhai Patel<sup>1\*</sup>, Sourabh Debbarma<sup>2</sup>, M. Bhargavi Priyadarshini<sup>3</sup>, Himanshu Priyadarshi<sup>4</sup>**

1. Department of Aquaculture, College of Fisheries, Central Agriculture University (Imphal) Lembucherra, Tripura (West) 799210
2. Department of Aquatic Health & Environment, College of Fisheries, Central Agriculture University (Imphal) Lembucherra, Tripura (West) 799210
3. Department of Fish Processing Technology & Engineering, College of Fisheries, Central Agriculture University (Imphal) Lembucherra, Tripura (West) 799210
4. Department of Fish Genetics and Reproduction, College of Fisheries, Central Agriculture University (Imphal) Lembucherra, Tripura (West) 799210

**\*Corresponding author:**

Arun Bhai Patel

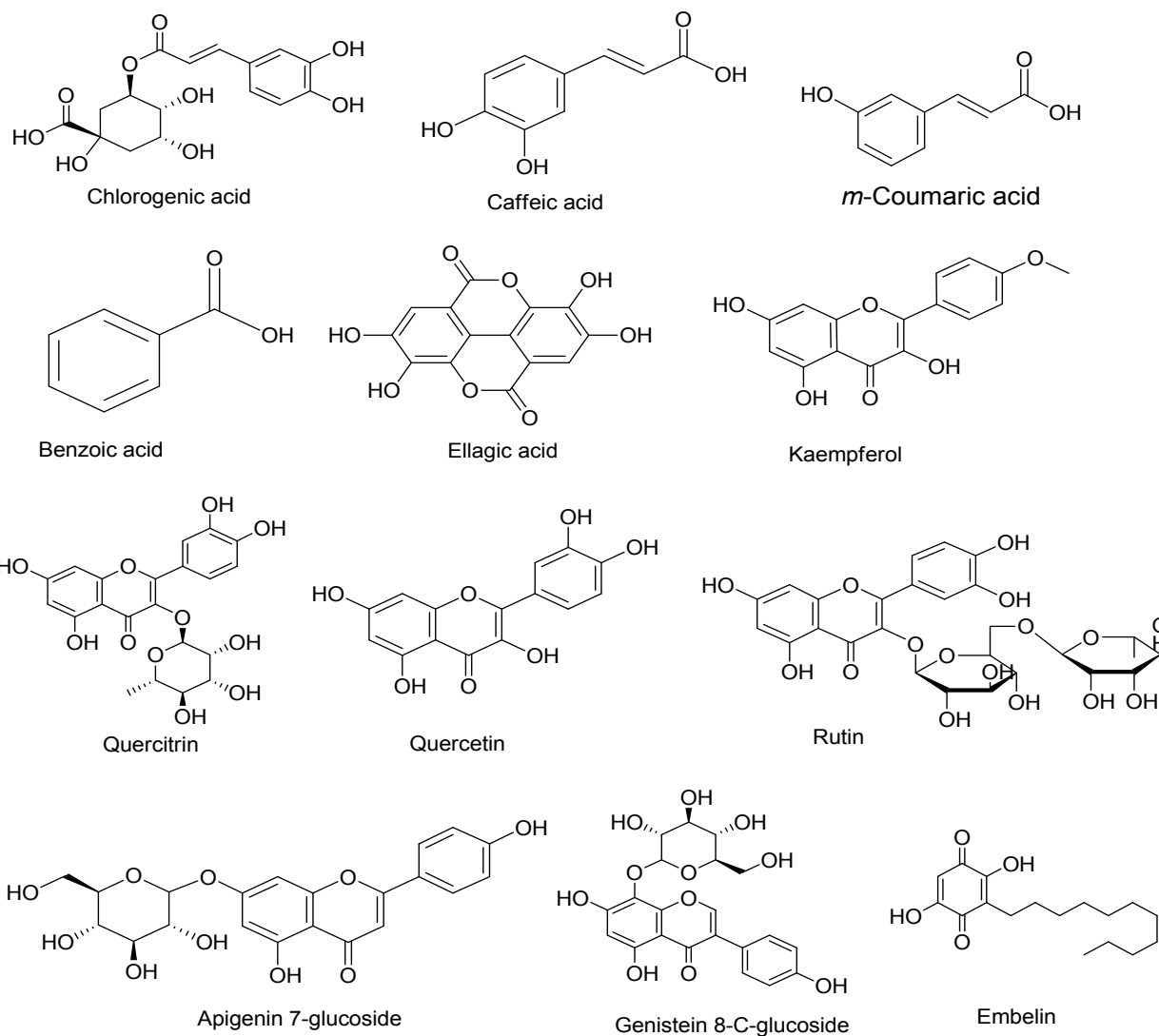
Department of Aquaculture

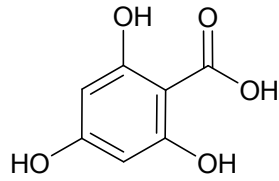
College of Fisheries, Central Agricultural University (Imphal), Lembucherra, Agartala, Tripura-799210, India

Email: [arun.b.patel@gmail.com](mailto:arun.b.patel@gmail.com)

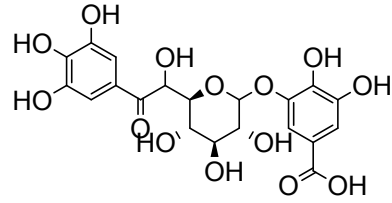
Mobile.No: +91 9436540812

**Figure S1. Chemical structures of tentatively identified phenolic compounds in wolffia filtrate and residue samples using LC-ESI-QTOF-MS/MS**

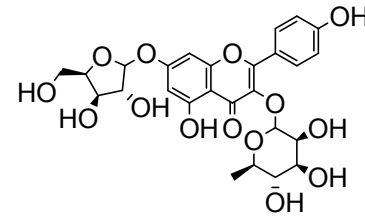




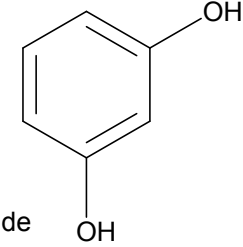
2,4,6-Trihydroxybenzoic acid



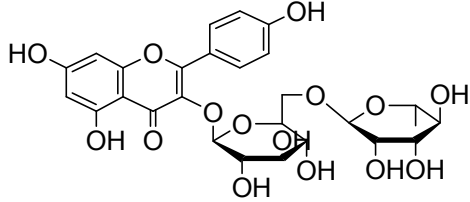
Gallic acid 3-O-(6-galloylglucoside)



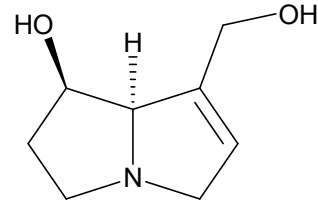
Kaempferol 3-rhamnoside 7-xyloside



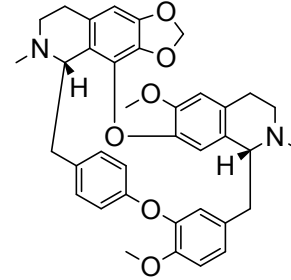
Resorcinol



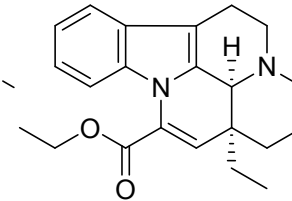
Nicotiflorin



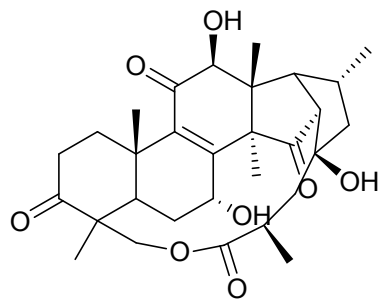
Retronecine



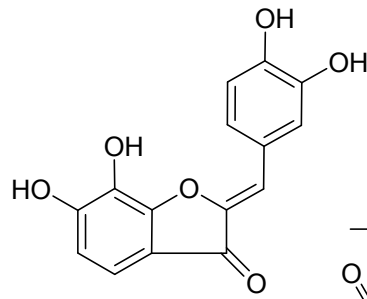
Cepharanthine



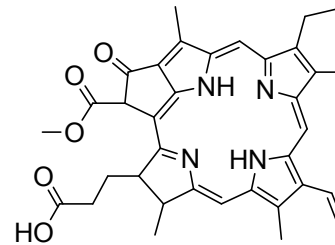
Vinpocetine



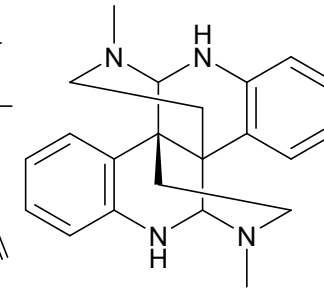
Ganosporelactone A



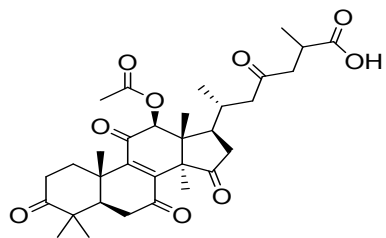
Maritimetin



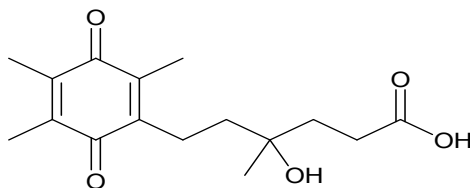
Pheophorbide a



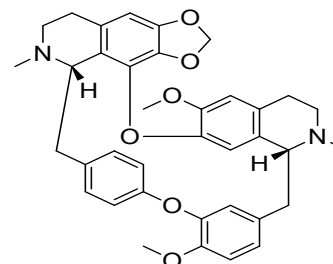
Calycanthine



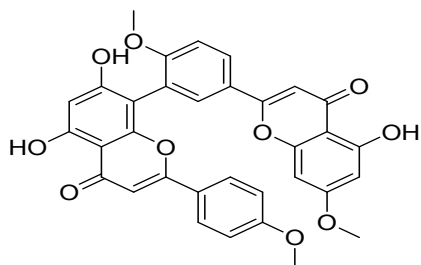
Ganoderic acid F



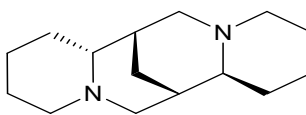
Tocopheronic acid



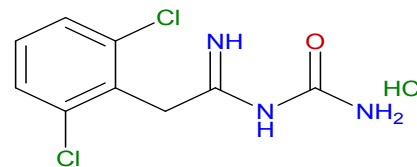
Cepharanthine



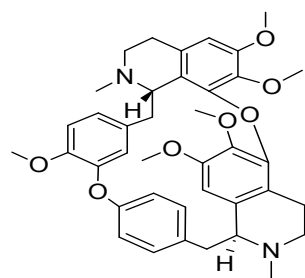
Sciadopitysin



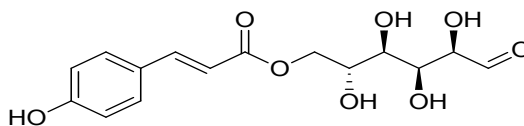
(-)-Sparteine



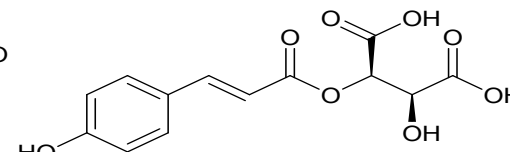
Terminaline



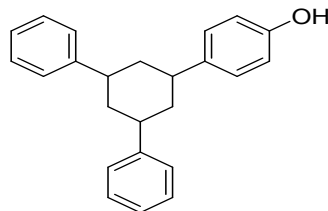
Thalidasine



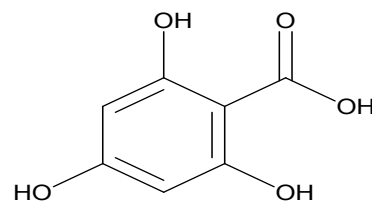
6-O-*p*-Coumaroyl-D-glucose



Mono-*trans-p* coumaroylmesotartaric acid

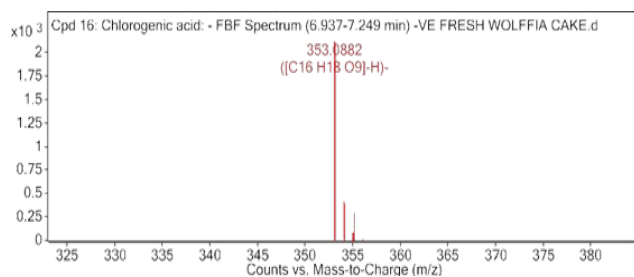


4-(3,5-Diphenylcyclohexyl)phenol

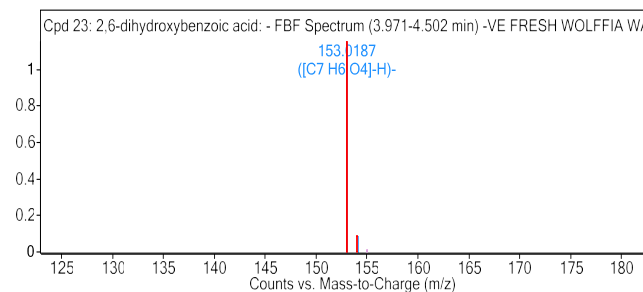


2,4,6-Trihydroxybenzoic acid

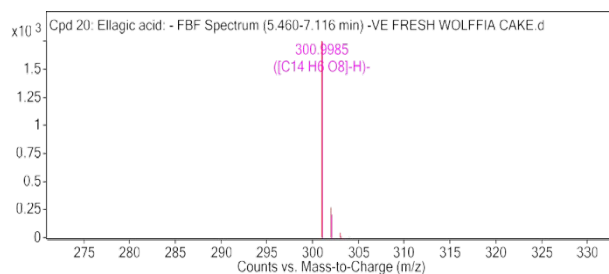
**Figure S2. MS/MS data of phenolic compounds tentatively identified in wolffia samples using LC-ESI-QTOF-MS/MS**



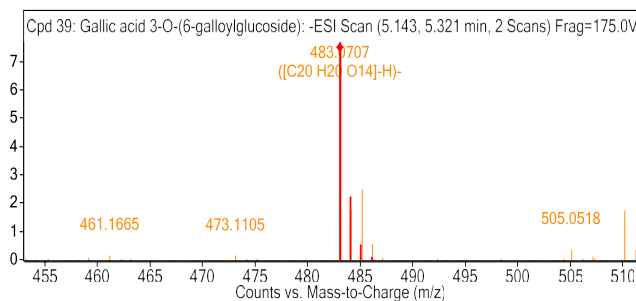
**Chlorogenic acid**



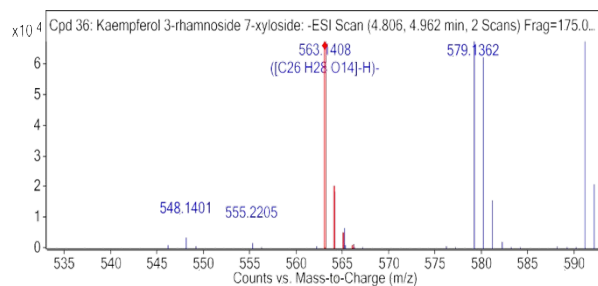
**2,6-dihydroxybenzoic acid**



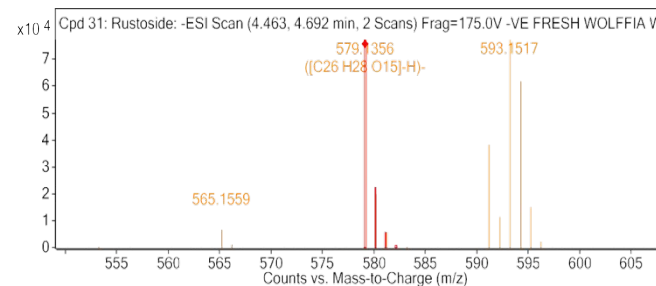
**Ellagic acid**



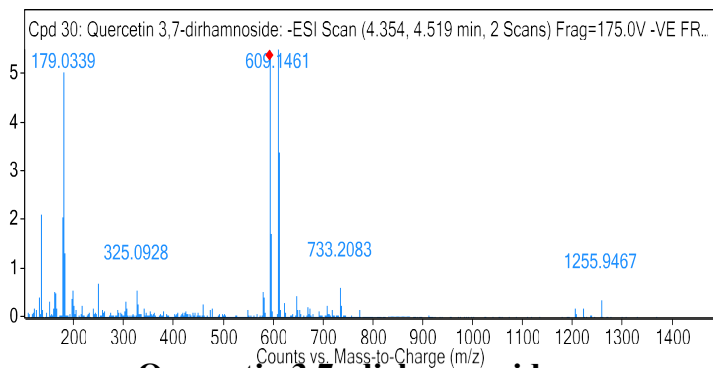
**Gallic acid 3-O-(6-galloylglucoside)**



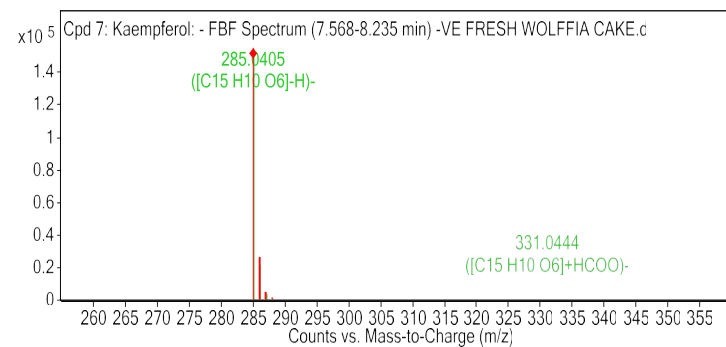
**Kaempferol 3- rhamnoside 7-xyloside**



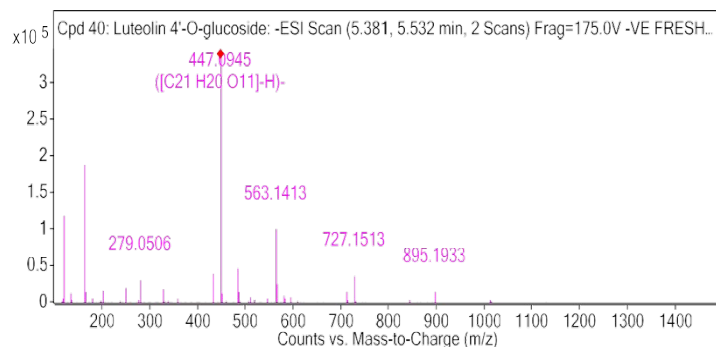
**Rustoside**



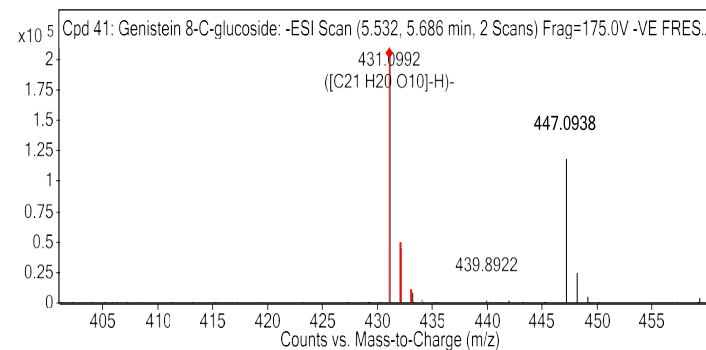
**Quercetin 3,7-dirhamnoside**



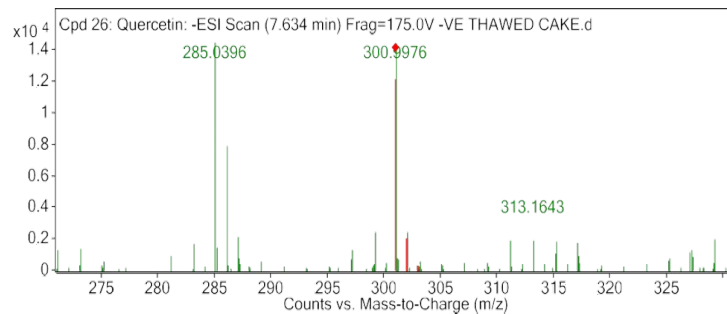
**Kaempferol**



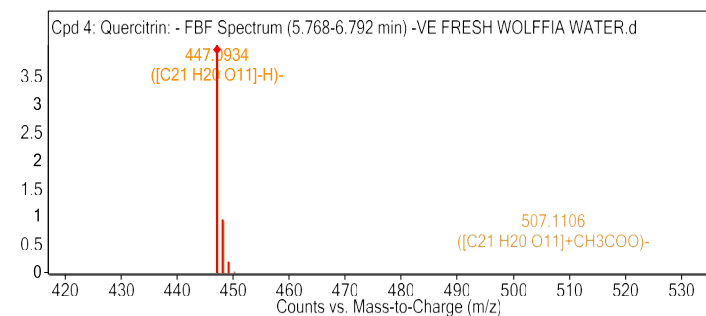
**Luteolin 4'-O-glucoside**



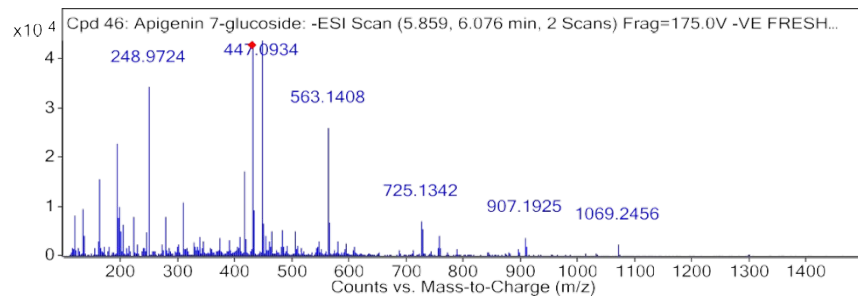
**Genistein 8-C-glucoside**



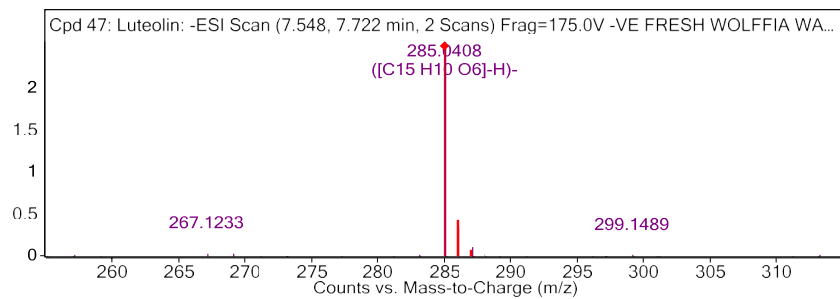
**Quercetin**



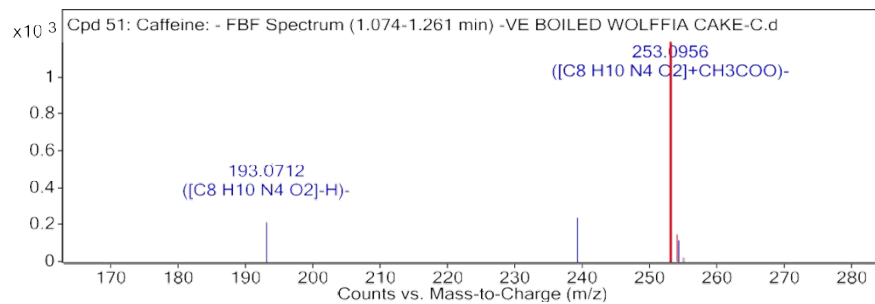
**Quercitrin**



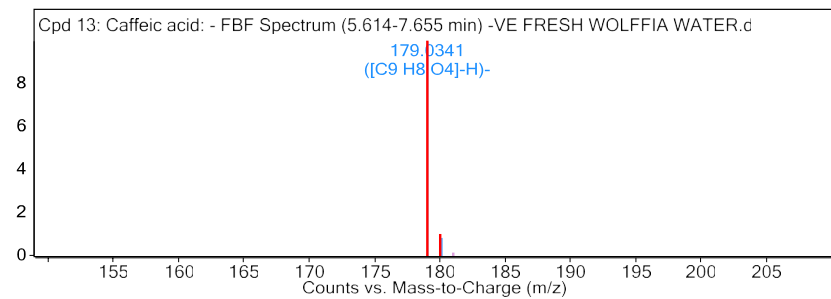
**Apigenin 7-glucoside**



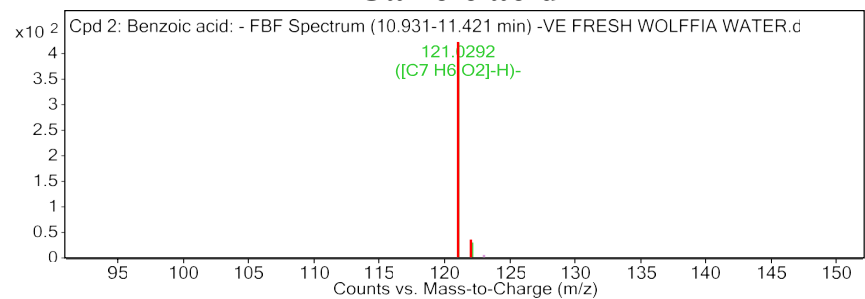
**Luteolin**



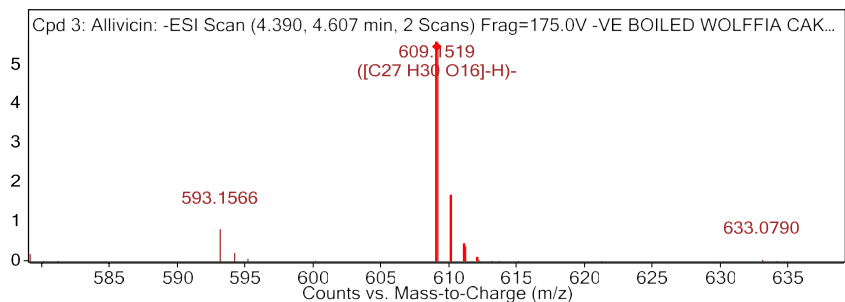
**Caffeine**



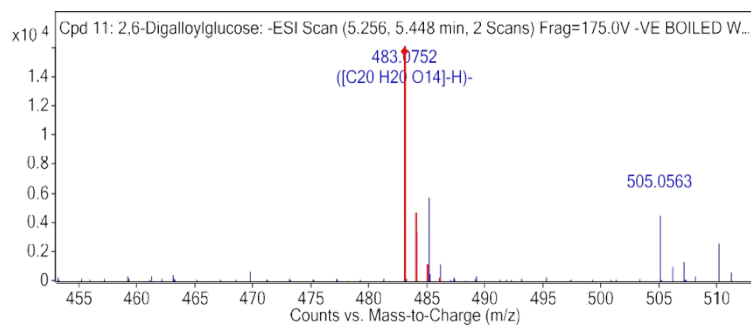
**Caffeic acid**



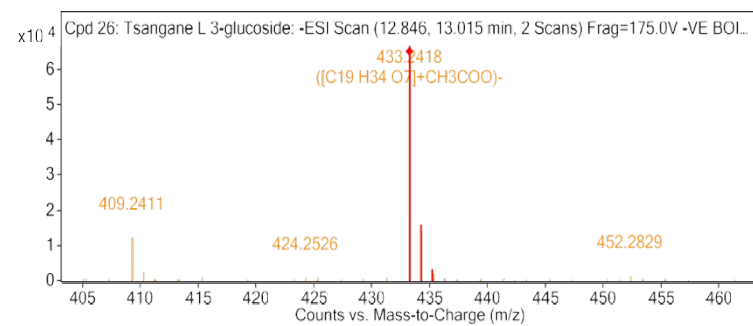
**Benzoic acid**



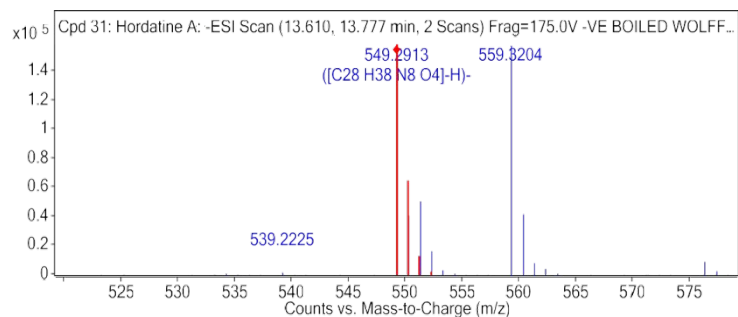
**Allivcin**



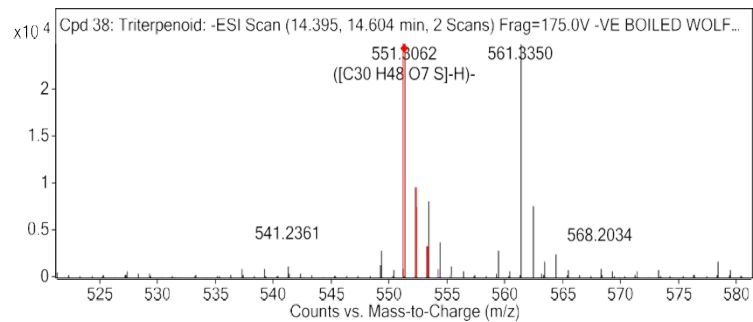
**2,6-Digalloylglucose**



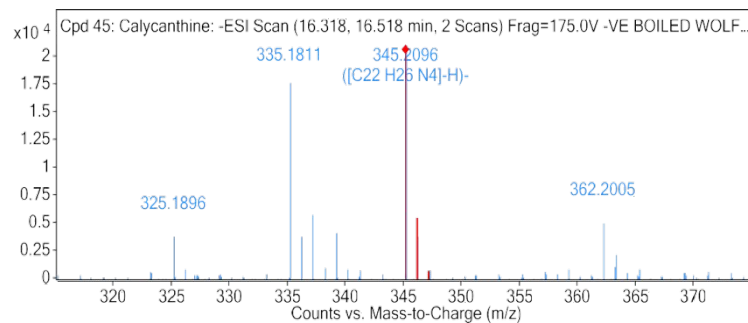
**Tsangane L 3-glucoside**



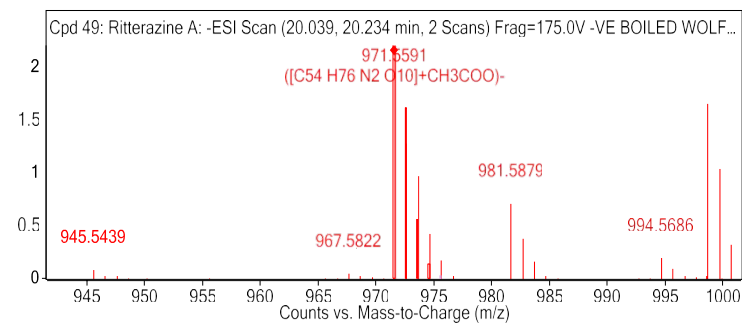
**Hordatine A**



**Triterpenoid**

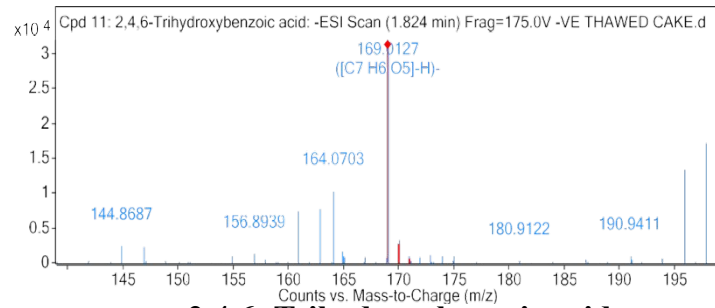


**Calycanthine**

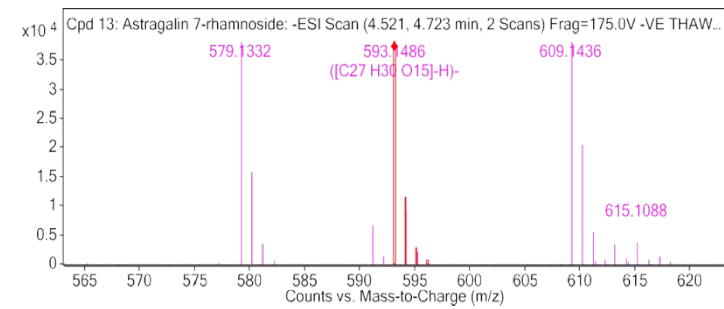


**Ritterazine A**

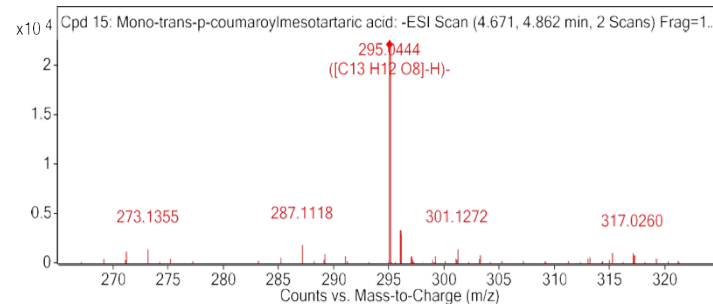




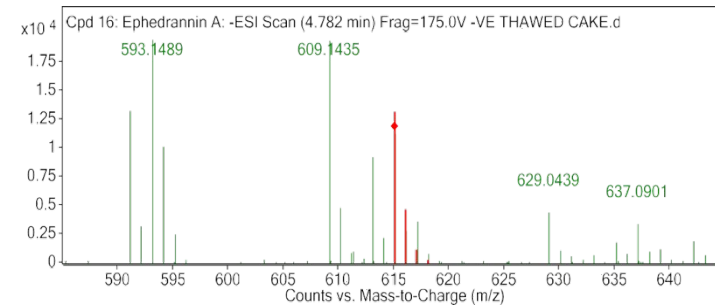
**2,4,6- Trihydroxybenzoic acid**



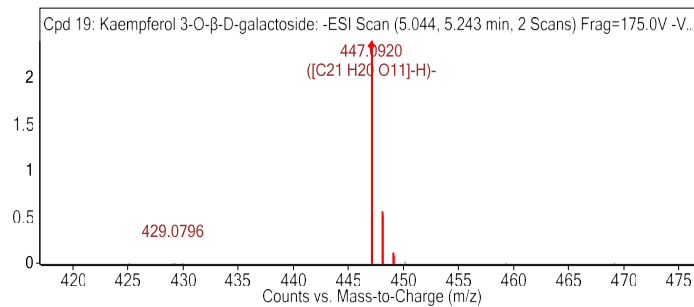
**Astragalin 7- rhamnoside**



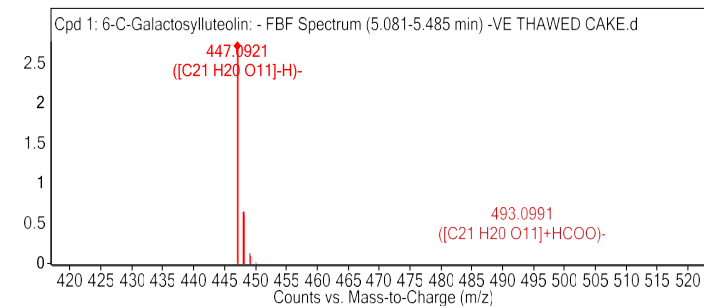
**Mono-trans-p-coumaroylmesotartaric acid**



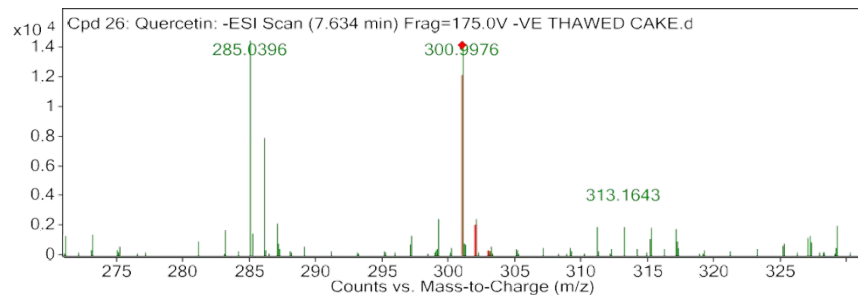
**Ephedrannin A**



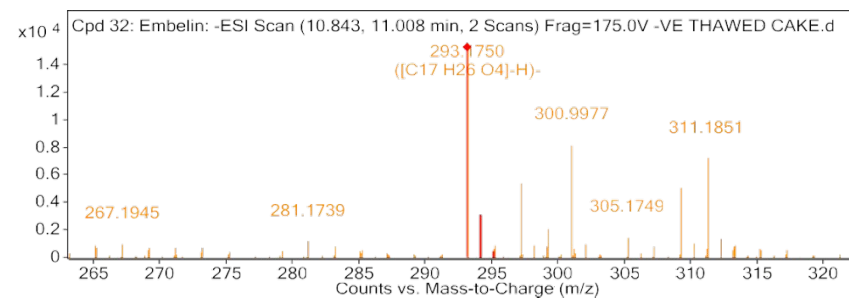
**Kaempferol 3-O-β-D- galactoside**



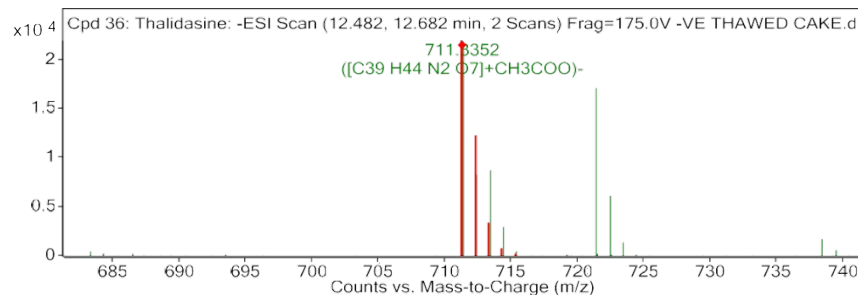
**6-C-Galactosylluteolin**



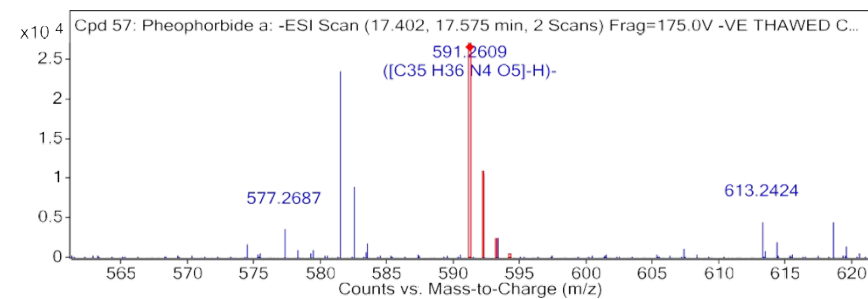
**Quercetin**



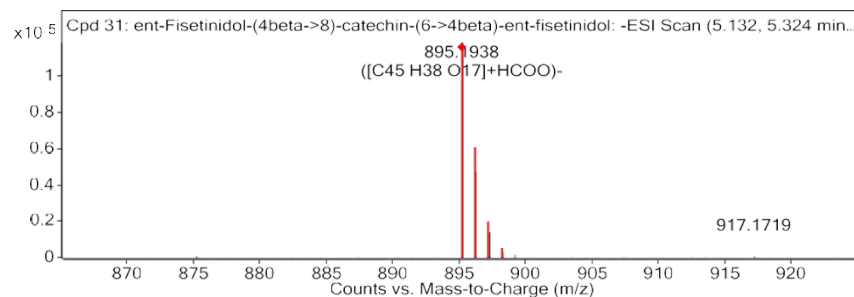
**Embelin**



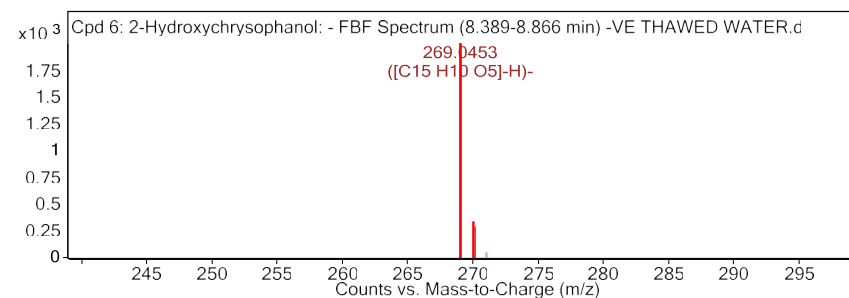
**Thalidasine**



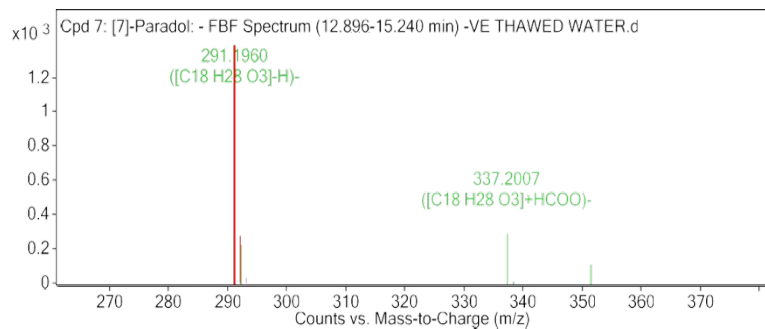
**Pheophorbide a**



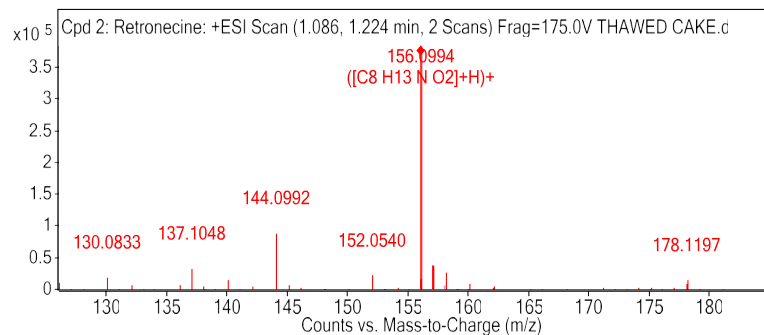
**ent-Fisetinidol- (4beta->8)-catechin-(6->4beta)-ent-fisetinidol**



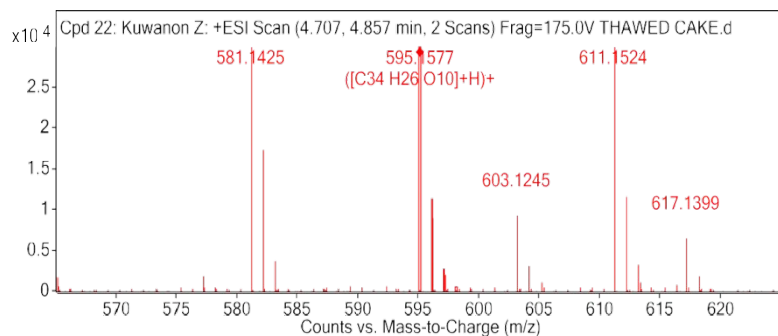
**2-Hydroxychrysophanol**



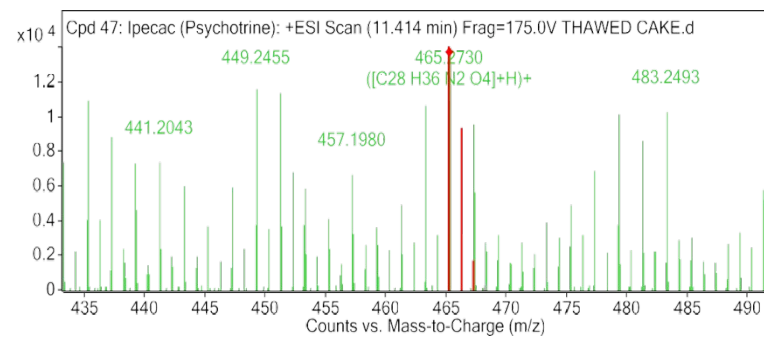
**[7]-Paradol**



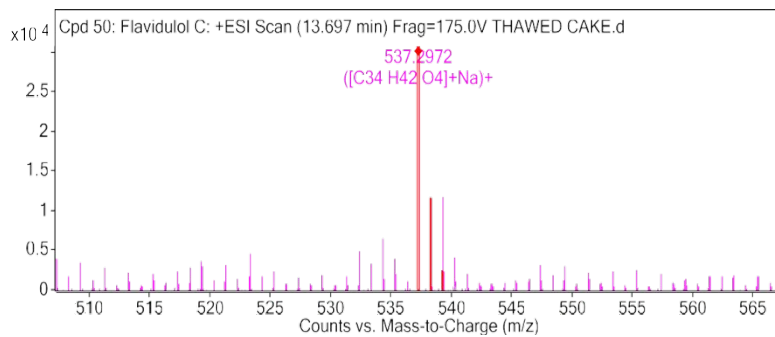
**Retronecine**



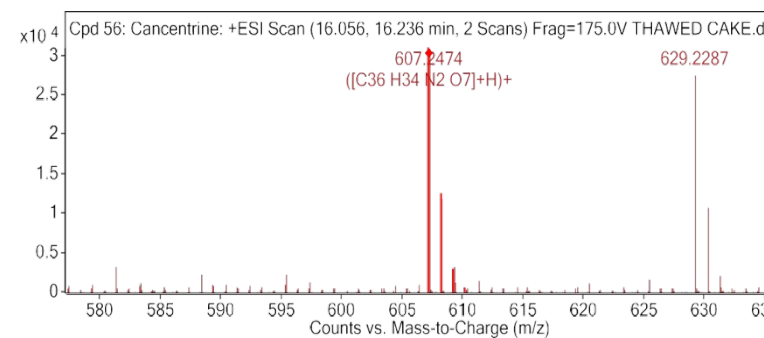
**Kuwanon Z**



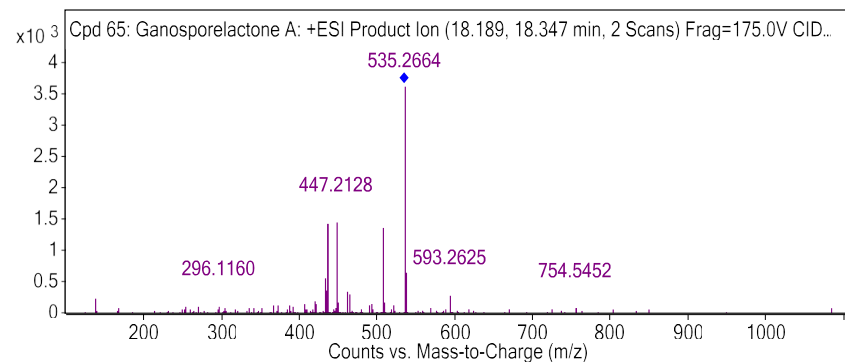
**Ipecac (Psychotrine)**



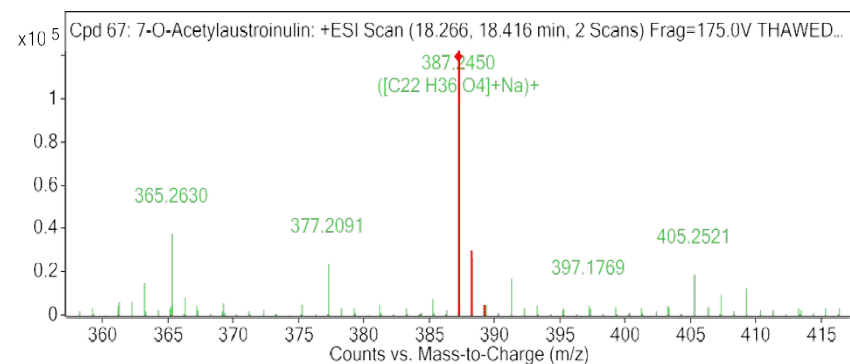
**Flavidulol C**



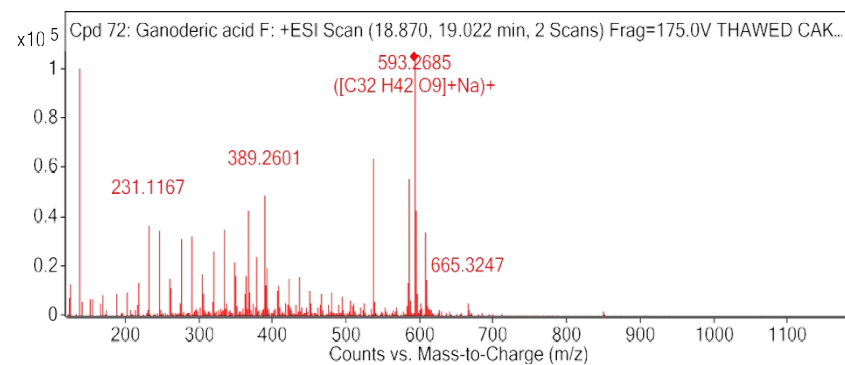
**Cancentrine**



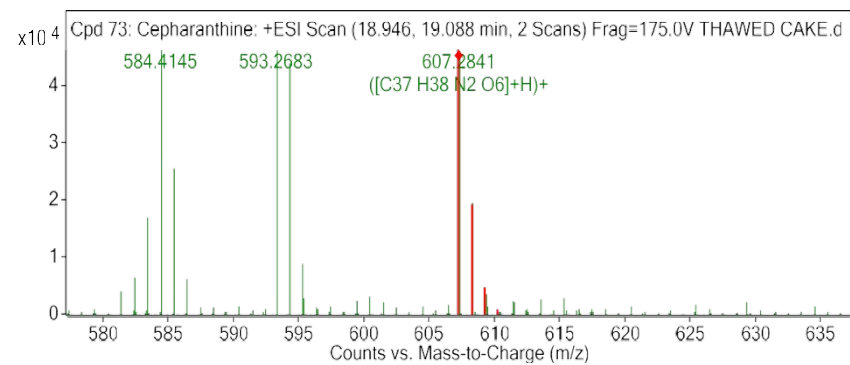
**Ganosporelactone A**



**7-O-Acetylaustroinulin**



**Ganoderic acid F**



**Cepharanthine**