

Figure S1.

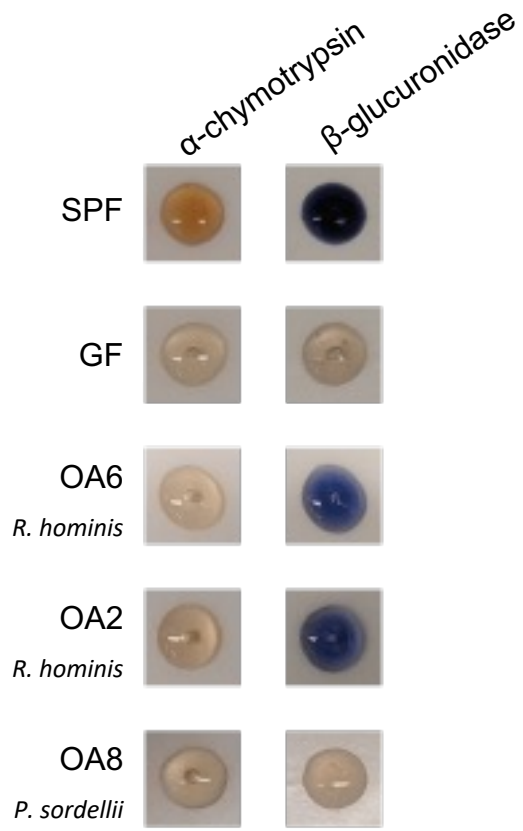


Figure S2.

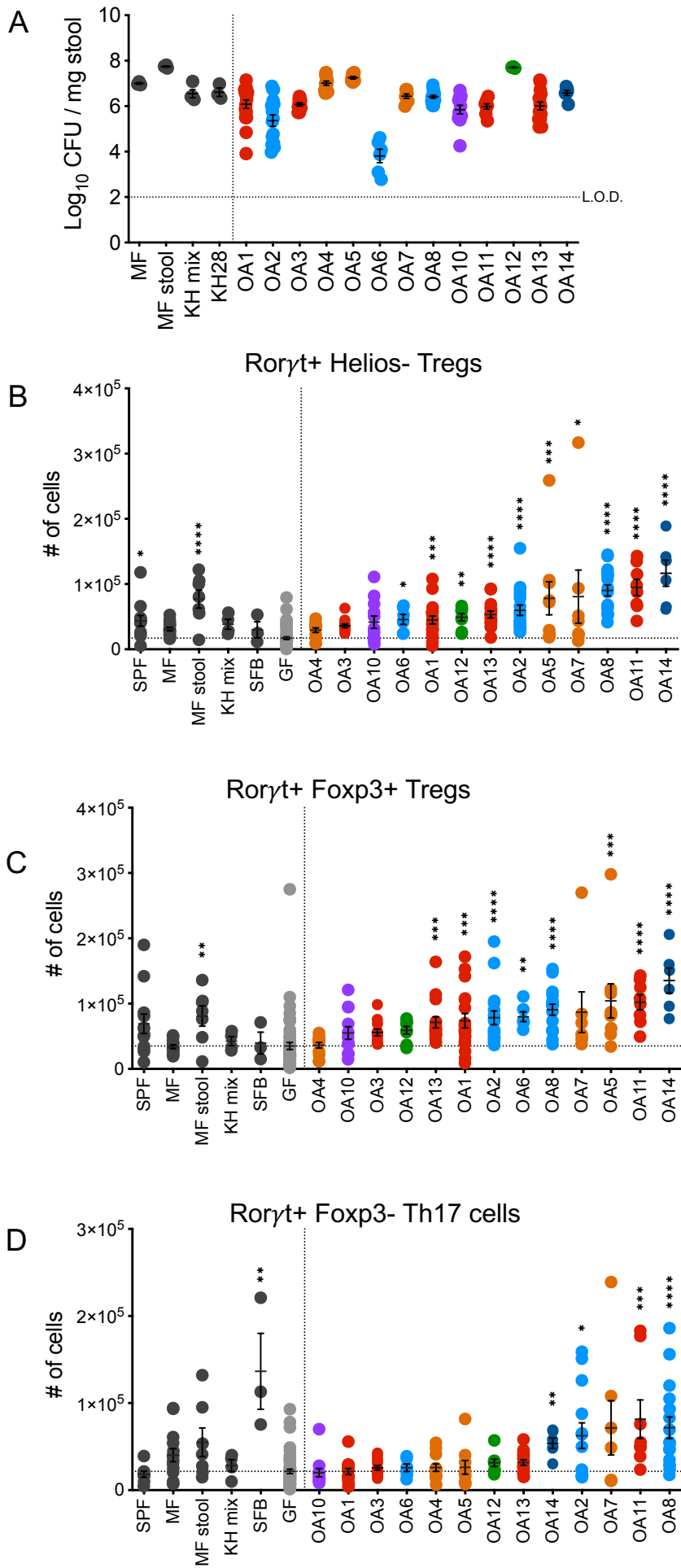


Figure S3.

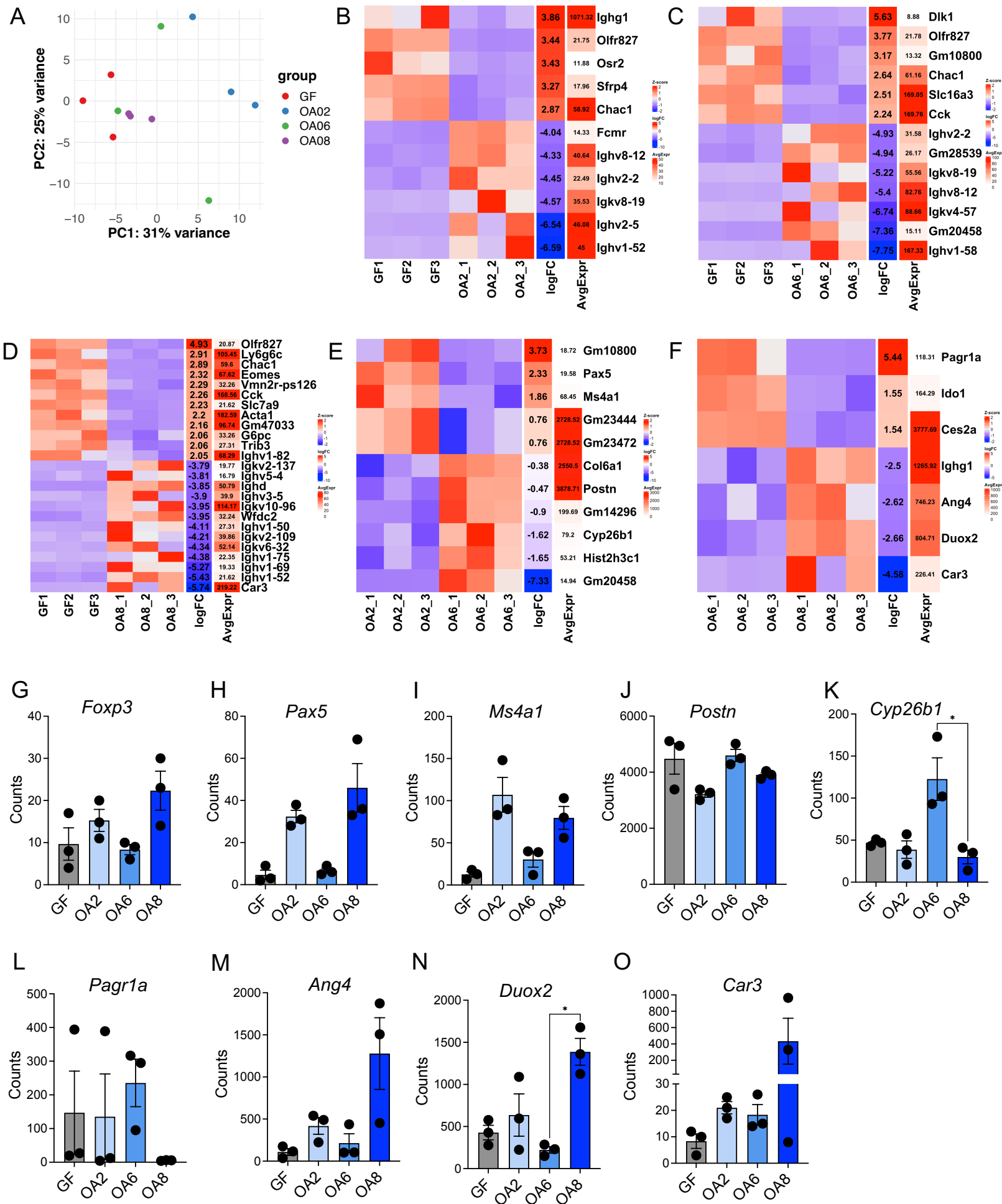


Figure S4.

P

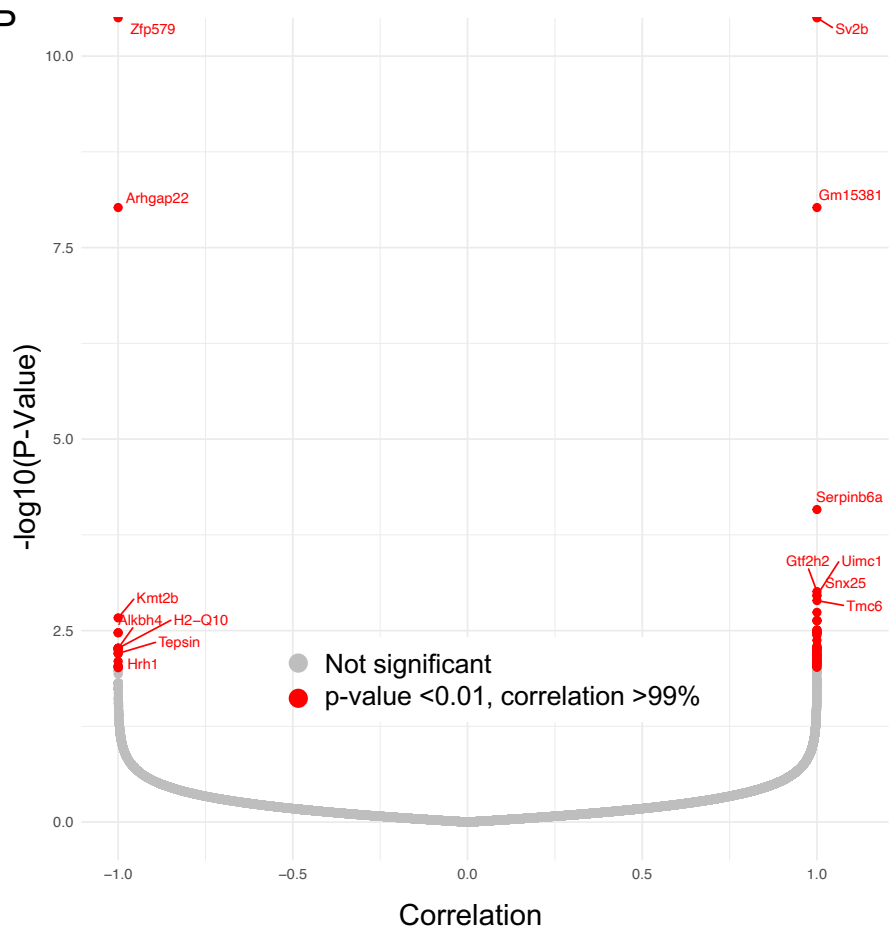


Figure S5.

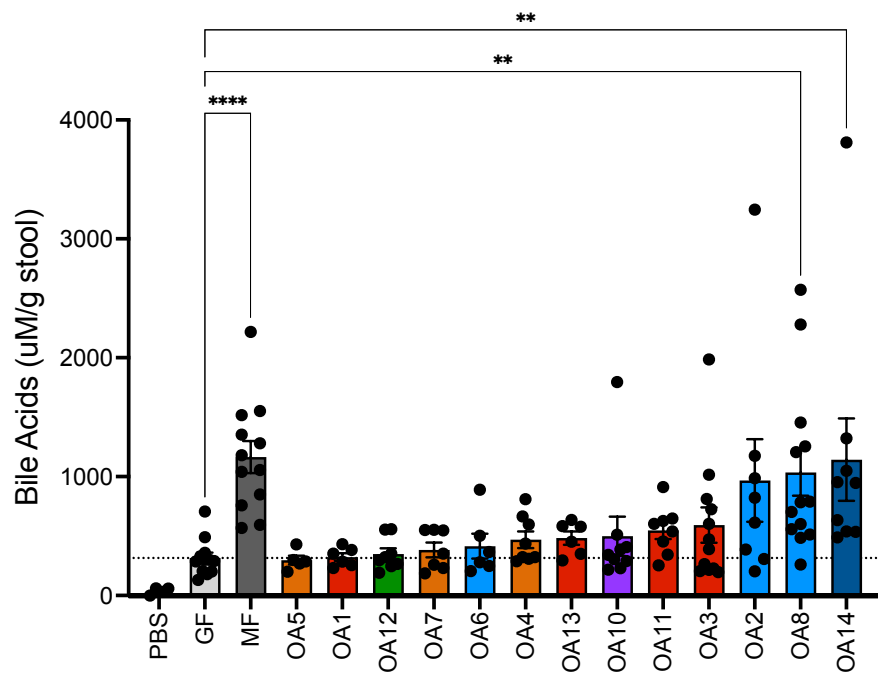


Figure S6.

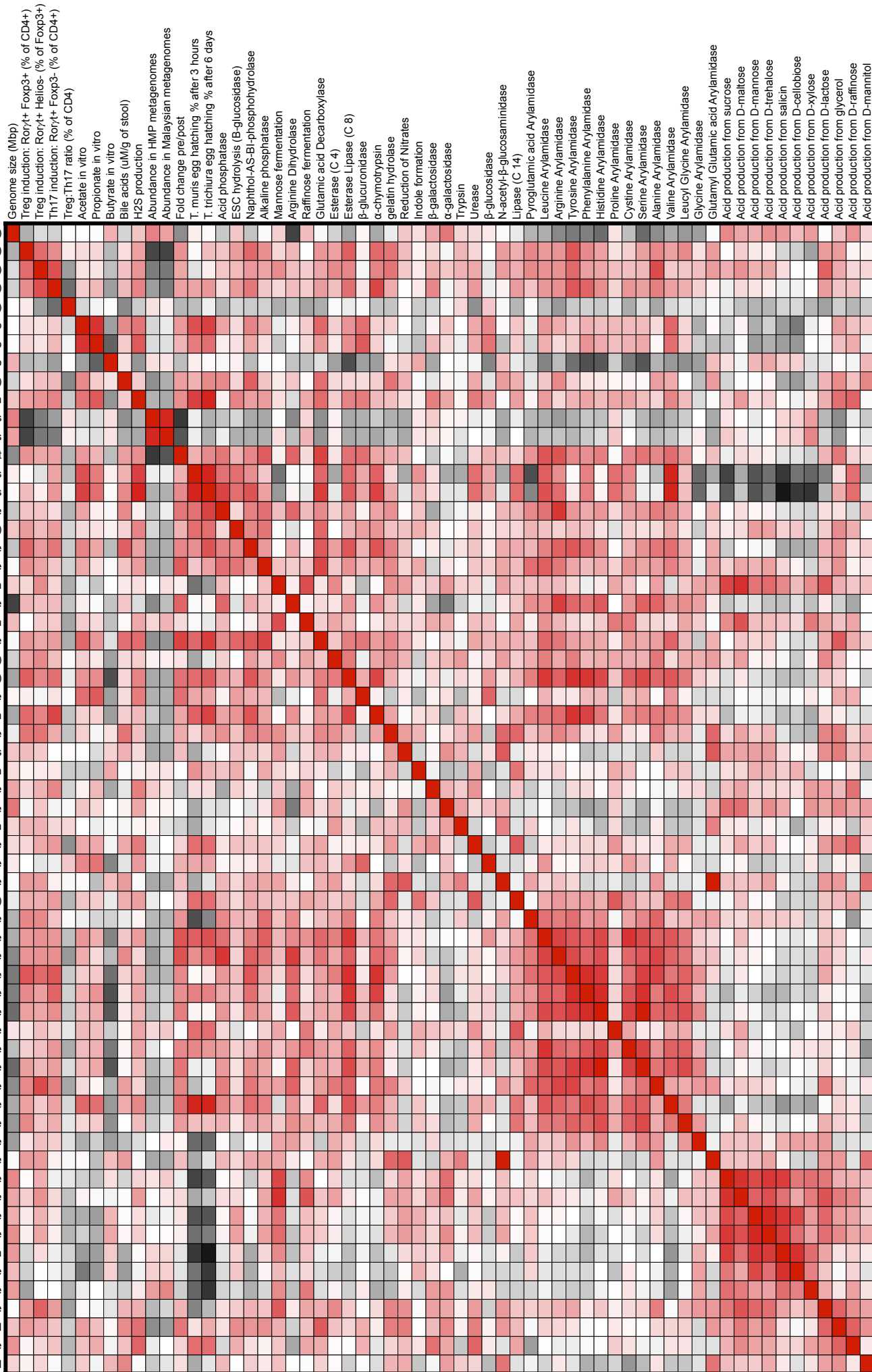
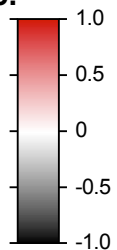
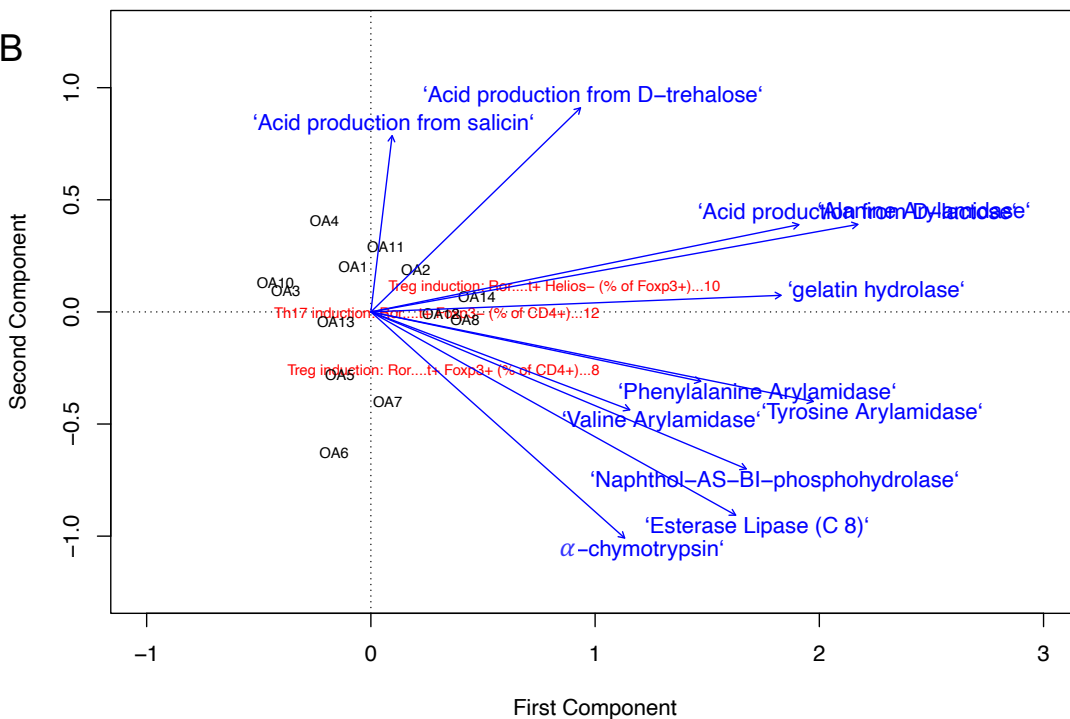


Figure S7.

A

Explanatory variables used for dbRDA	ANOVA for each explanatory variable
Valine arylamidase	Pr(>F) = 0.003
$\alpha$ -chymotrypsin	Pr(>F) = 0.004
Alanine Arylamidase	Pr(>F) = 0.001
Tyrosine Arylamidase	Not significant
Esterase Lipase (C 8)	Pr(>F) = 0.028
Acid production from D-lactose	Pr(>F) = 0.002
Phenylalanine Arylamidase	Pr(>F) = 0.029
Naphthol-AS-BI-phosphohydrolase	Pr(>F) = 0.007
Gelatin hydrolase	Not significant
Acid production from salicin	Pr(>F) = 0.049
Acid production from D-trehalose	Pr(>F) = 0.045

B



- ANOVA for dbRDA model: Pr(>F) = 0.009
- ANOVA for dbRDA component 1: Pr(>F) = 0.013 Explains 85% of the variance. Component 2 is not significant.
- Proportion of constrained variance > 0.99

C

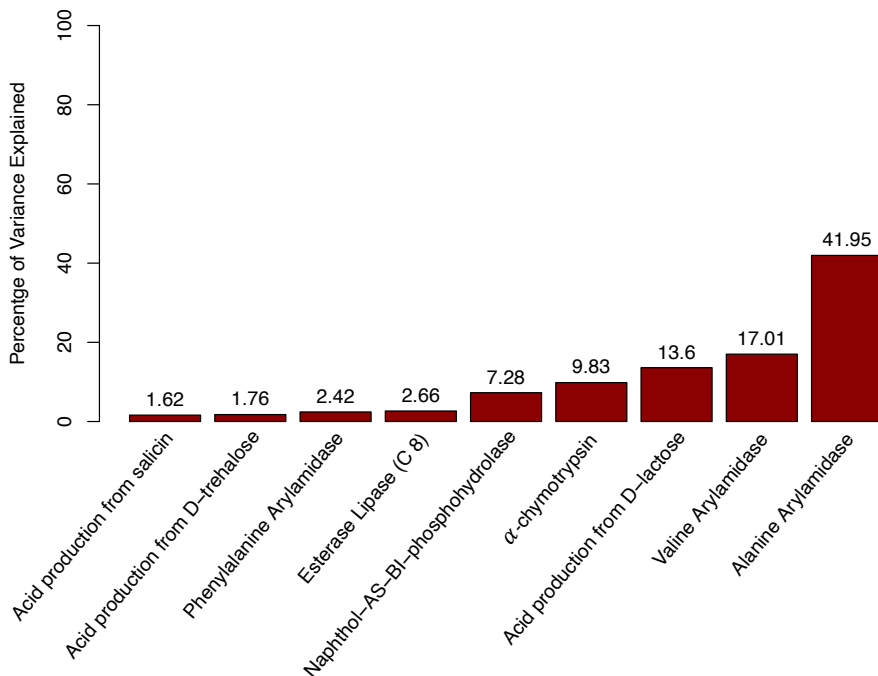


Figure S8.

