

Suppl. Table 1. List of antibodies

Antibody	Isotype	Host	Company	Catalog number	Dilutions	RRID #
Primary antibodies						
Endothelin B receptor	IgG	Rabbit	Alomone	AER-002	1:500, 1:200, 1:50	AB_203984
Endothelin B receptor	IgG	Rabbit	Abcam	ab117529	1:500, 1:200, 1:50	AB_1090207
Endothelin B receptor	IgG	Rabbit	GeneTex	GTX17408	1:500, 1:200, 1:50	AB_374462
Rabbit Isotype control	IgG	Rabbit	Invitrogen	31235	1:200	AB_243593
Chicken Isotype control	IgY	Chicken	Abcam	ab50579	1:200	not available
Anti-GFP	IgY	Chicken	Abcam	ab13970	1:200	AB_300798
Smooth muscle actin, Clone EPR5368	IgG	Rabbit	Abcam	ab124964	1:50	AB_11129103
Endothelin 1	IgG	Rabbit	Abcam	ab113697	1:200	not available
HuC/HuD, Clone EPR19098	IgG	Rabbit	Abcam	ab184267	1:200	AB_2864321
S100 beta, Clone 4C4.9	IgG2a	Mouse	Abcam	ab4066	1:200	AB_304258
S100 beta, Clone EP1576Y	IgG	Rabbit	Abcam	ab52642	1:200	AB_882426
MHCII	IgG2b κ	Mouse	Novus	NBP2-45312	1:200	not available
MPO	IgG	Rabbit	Abcam	ab9535	1:100	AB_307322
CD68, Clone FA-11	IgG2a	Rat	Bio-Rad	MCA1957T	1:200	AB_322219
Peripherin	IgY	Chicken	Novus	NBP1-05423	1:200	AB_1556333
GFAP	IgY	Chicken	Abcam	ab4674	1:200	AB_304558
Chromogranin A	IgG	Rabbit	Abcam	ab15160	1:200	AB_301704
Secondary antibodies						
anti-rabbit, Alexa 488	IgG	Donkey	Invitrogen	A21206	1:400	AB_2535792
anti-mouse, Alexa 488	IgG	Donkey	Invitrogen	A21202	1:400	AB_141607
anti-mouse, Alexa 568	IgG	Donkey	Invitrogen	A10037	1:400	AB_2534013
anti-rat, Alexa 488	IgG	Donkey	Invitrogen	A21208	1:400	AB_2535794
anti-chicken, Alexa 568	IgY	Goat	Invitrogen	A11041	1:400	AB_2534098
anti-rabbit, Cy5	IgG	Goat	Invitrogen	A10523	1:400	AB_2534032
anti-mouse, IRDye 680RD		Donkey	Li-Cor	926-68072	1:5000	AB_10953628
anti-rabbit, IRDye 800CW		donkey	Li-Cor	926-32212	1:5000	AB_621847
anti-goat, IRDye 680RD		donkey	Li-Cor	926-68074	1:5000	AB_10956736
anti-chicken, IRDye 680RD		donkey	Li-Cor	926-68075	1:5000	AB_10974977
NucBlue Fixed Cell Ready Probe Reagent (DAPI)			Thermo Fisher	R37606	2drops/1 ml	not available

Suppl. Table 2. Taqman PCR Assays

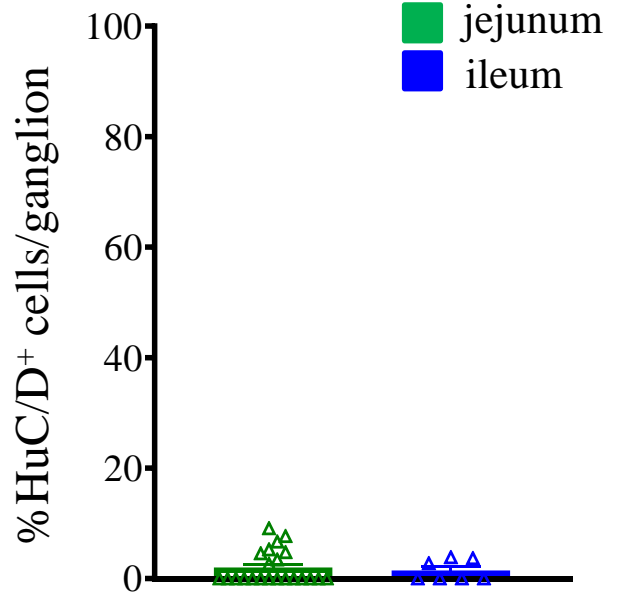
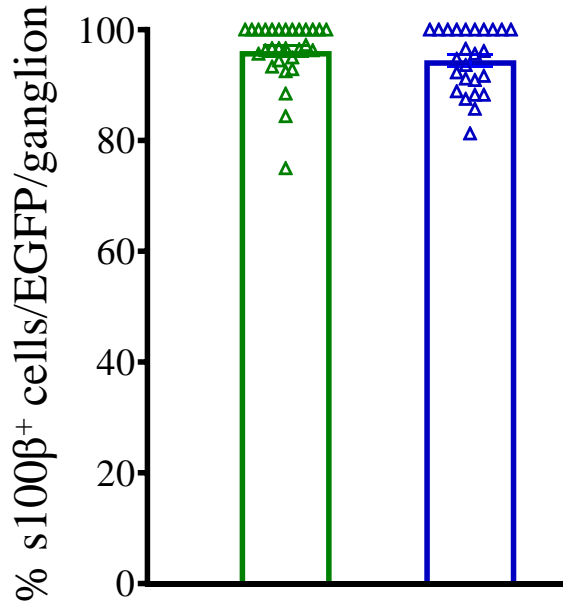
ASSAY name	Assay ID	Ref Seq Link
ednra	Mm01243719_m1	https://www.ncbi.nlm.nih.gov/nuccore/NM_010332.2
ednrb (Endothelin receptor type B)	Mm00432989_m1	https://www.ncbi.nlm.nih.gov/nuccore/NM_001136061.2
endothelin 1 (ET1)	Mm00438656_m1	https://www.ncbi.nlm.nih.gov/nuccore/NM_010104.3
endothelin 2 (ET2)	Mm00432983_m1	https://www.ncbi.nlm.nih.gov/nuccore/NM_007902.2
endothelin 3 (ET3)	Mm00432987_m1	https://www.ncbi.nlm.nih.gov/nuccore/NM_007903.4
nestin	Mm00450205_m1	https://www.ncbi.nlm.nih.gov/nuccore/NM_016701.3
GFAP	Mm01253033_m1	https://www.ncbi.nlm.nih.gov/nuccore/NM_001131020.1
proteolipid protein 1 (plp1)	Mm01297210_m1	https://www.ncbi.nlm.nih.gov/nuccore/NM_001290561.1
Sox10	Mm00569909_m1	https://www.ncbi.nlm.nih.gov/nuccore/NM_011437.1
ENTPD2	Mm00515450_m1	https://www.ncbi.nlm.nih.gov/nuccore/NM_009849.2
s100beta	Mm00485897_m1	https://www.ncbi.nlm.nih.gov/nuccore/NM_009115.3
GDNF	Mm00599849_m1	https://www.ncbi.nlm.nih.gov/nuccore/NM_001301332.1

Suppl. Fig. 1

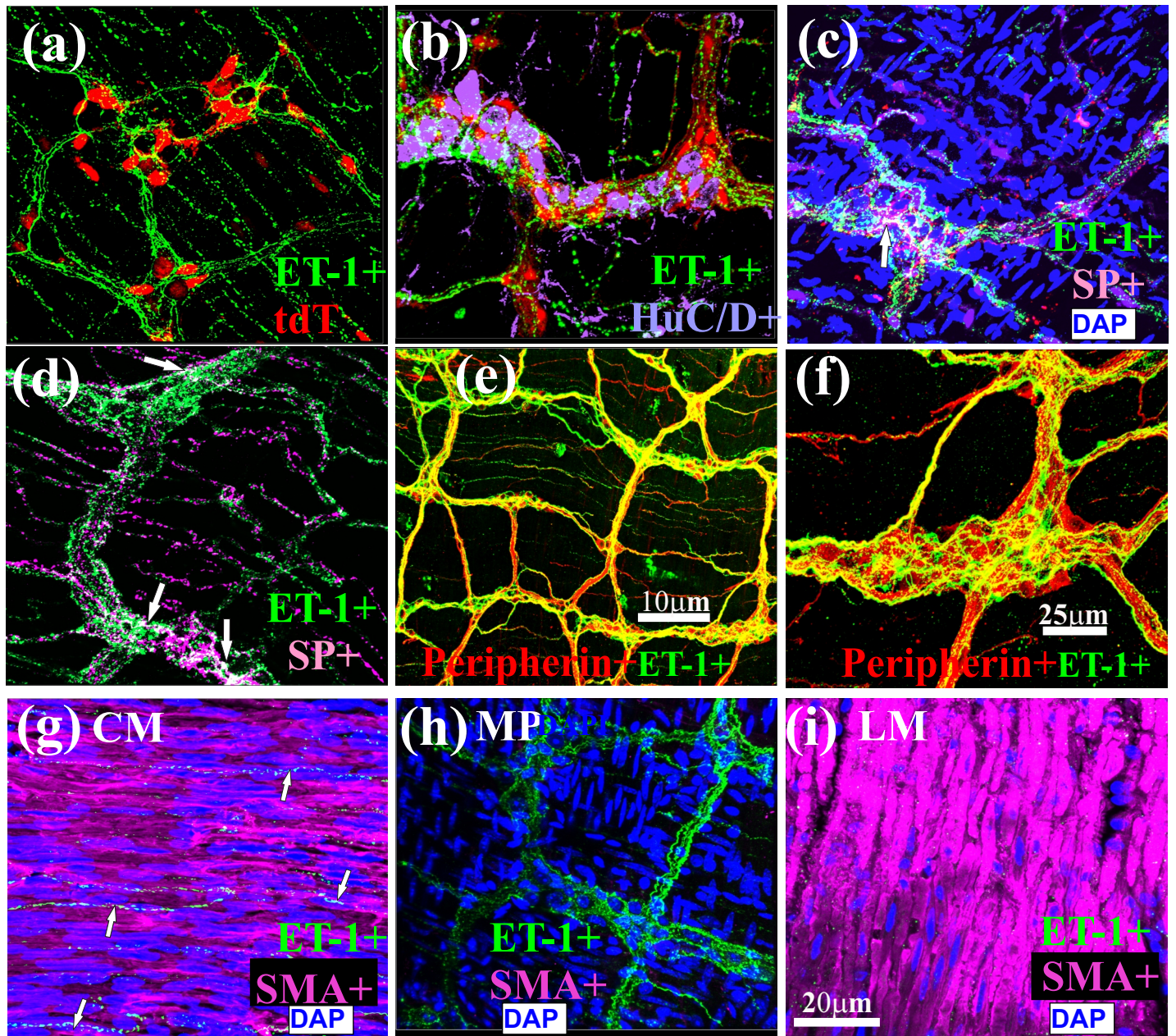
Tg(Ednrb-EGFP)EP59Gsat/Mmucd mice

(a)

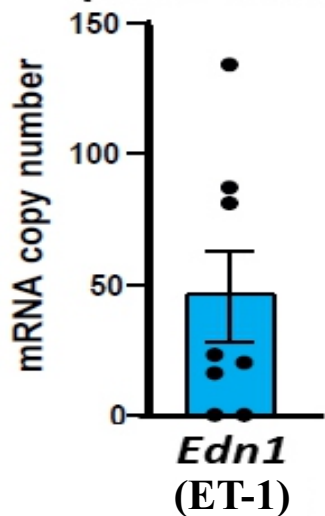
(b)



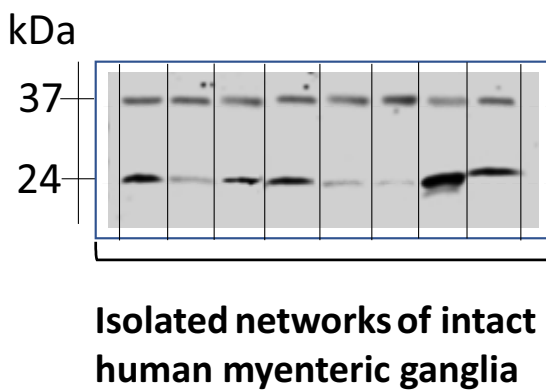
Suppl. Fig. 2



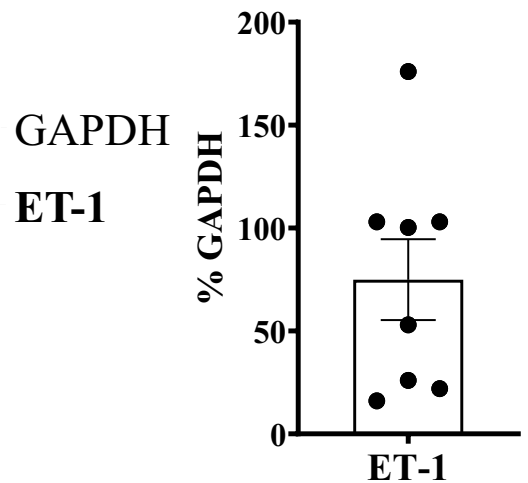
(j) RiboTag
(ChAT-Neurons)



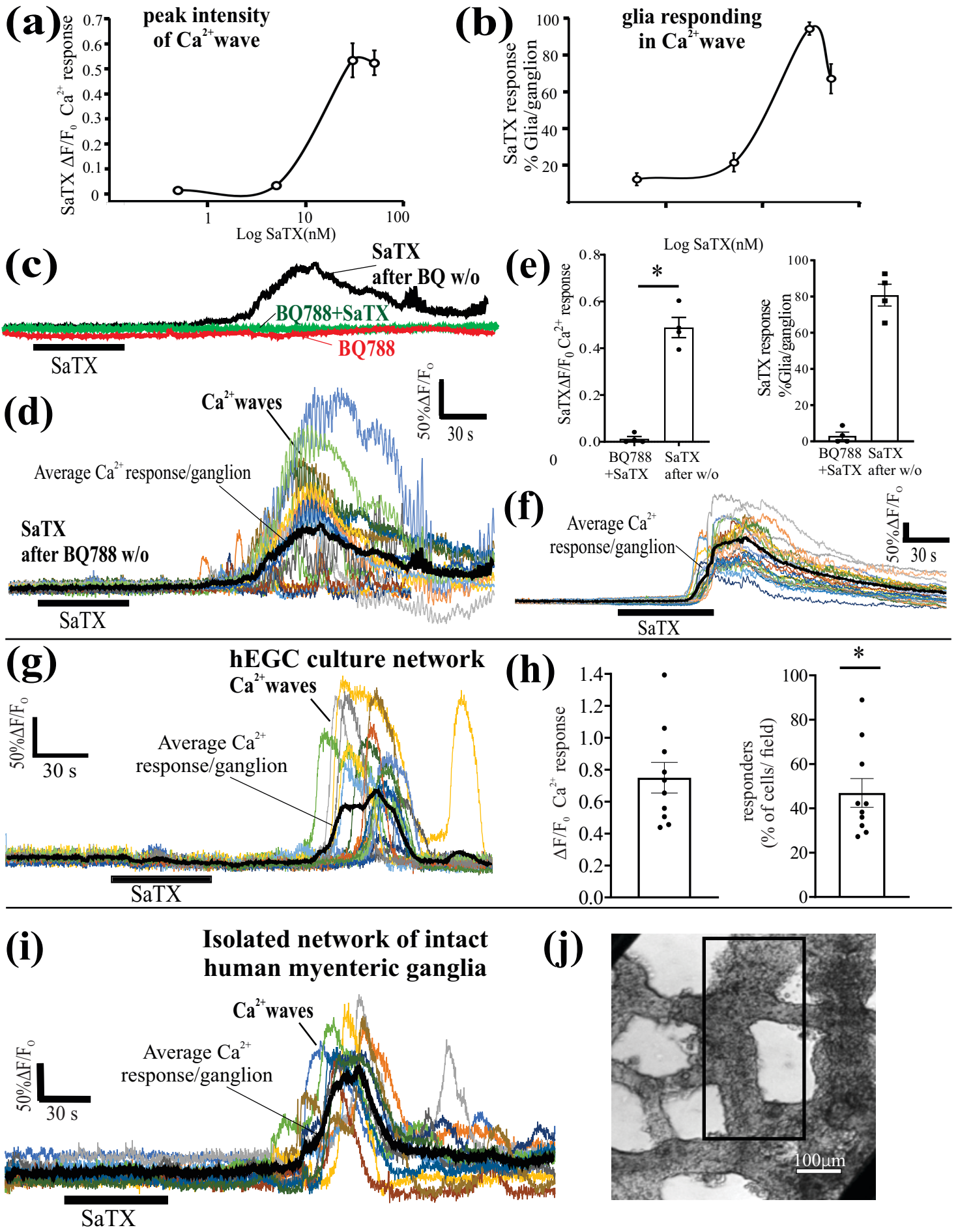
(k)



(l)



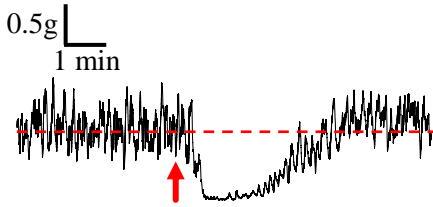
Suppl. Fig. 3 **Sox10^{CreERT2}; GCaMP5g-tdT mice**



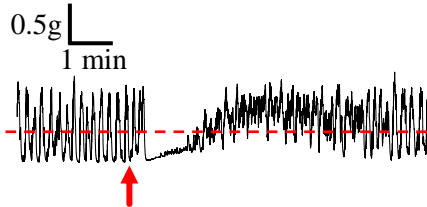
Suppl. Fig. 4

CM Relaxation

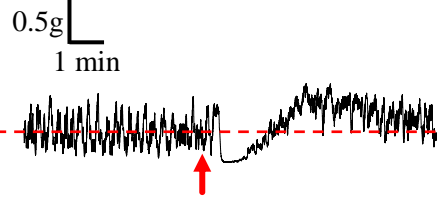
(a) SaTX



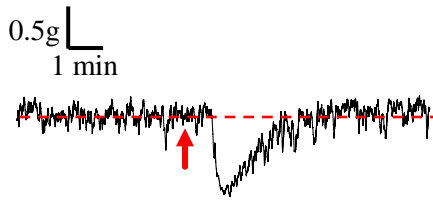
(b) SaTX



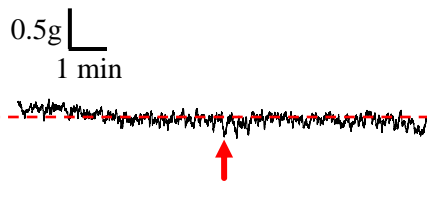
(c) SaTX



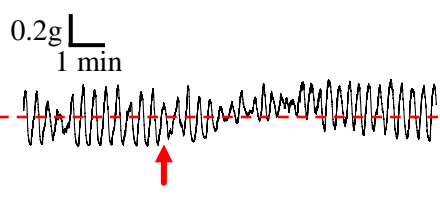
(d) SaTX



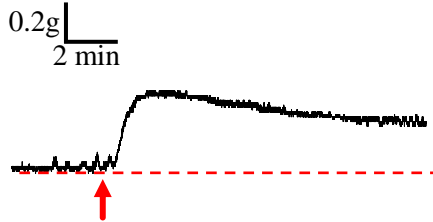
(e) BQ788 + SaTX



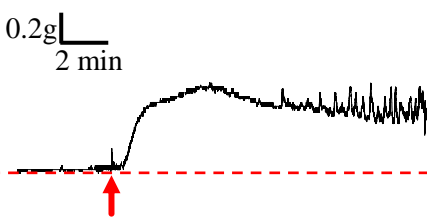
(f) SaTX + TTX



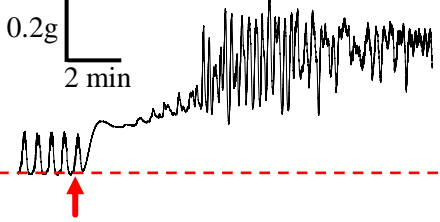
(g) ET-1



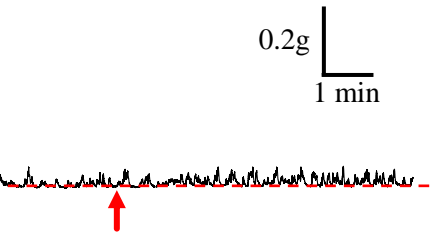
(h) ET-1



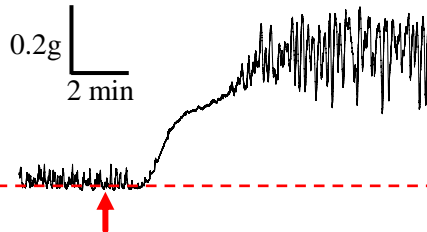
(i) TTX + ET-1



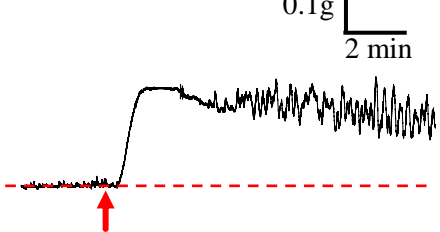
(j) BQ788



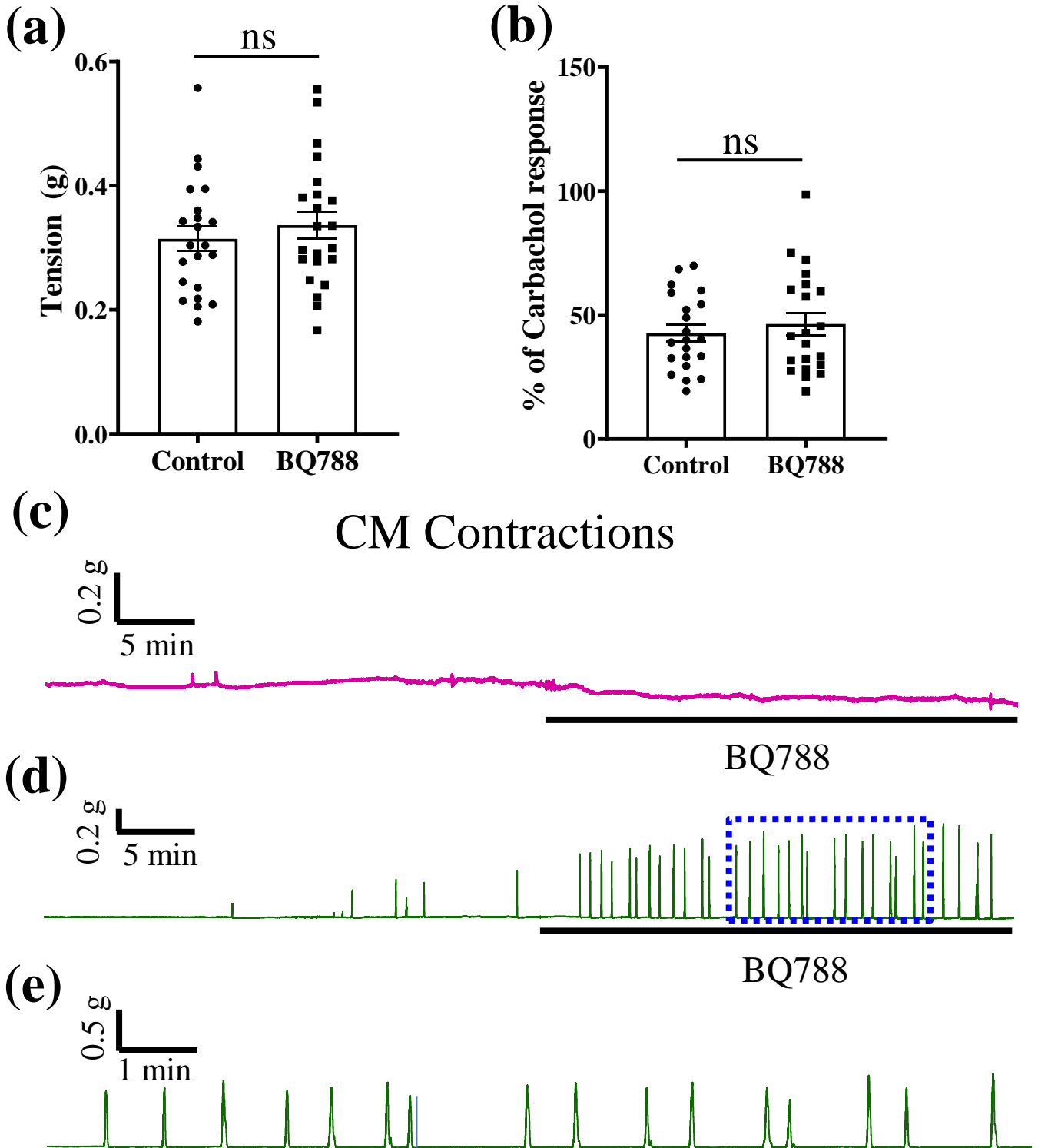
(k) BQ788 + ET1



(l) ET-1

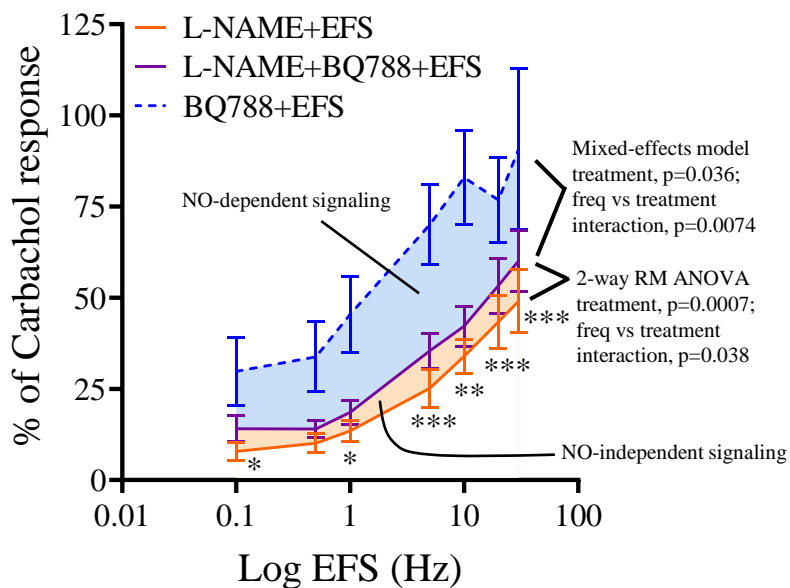


Resting Tension

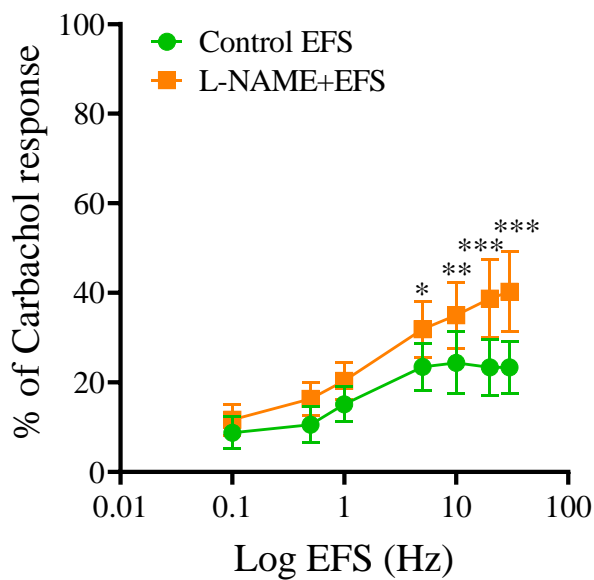


Suppl. Fig. 6

(a)

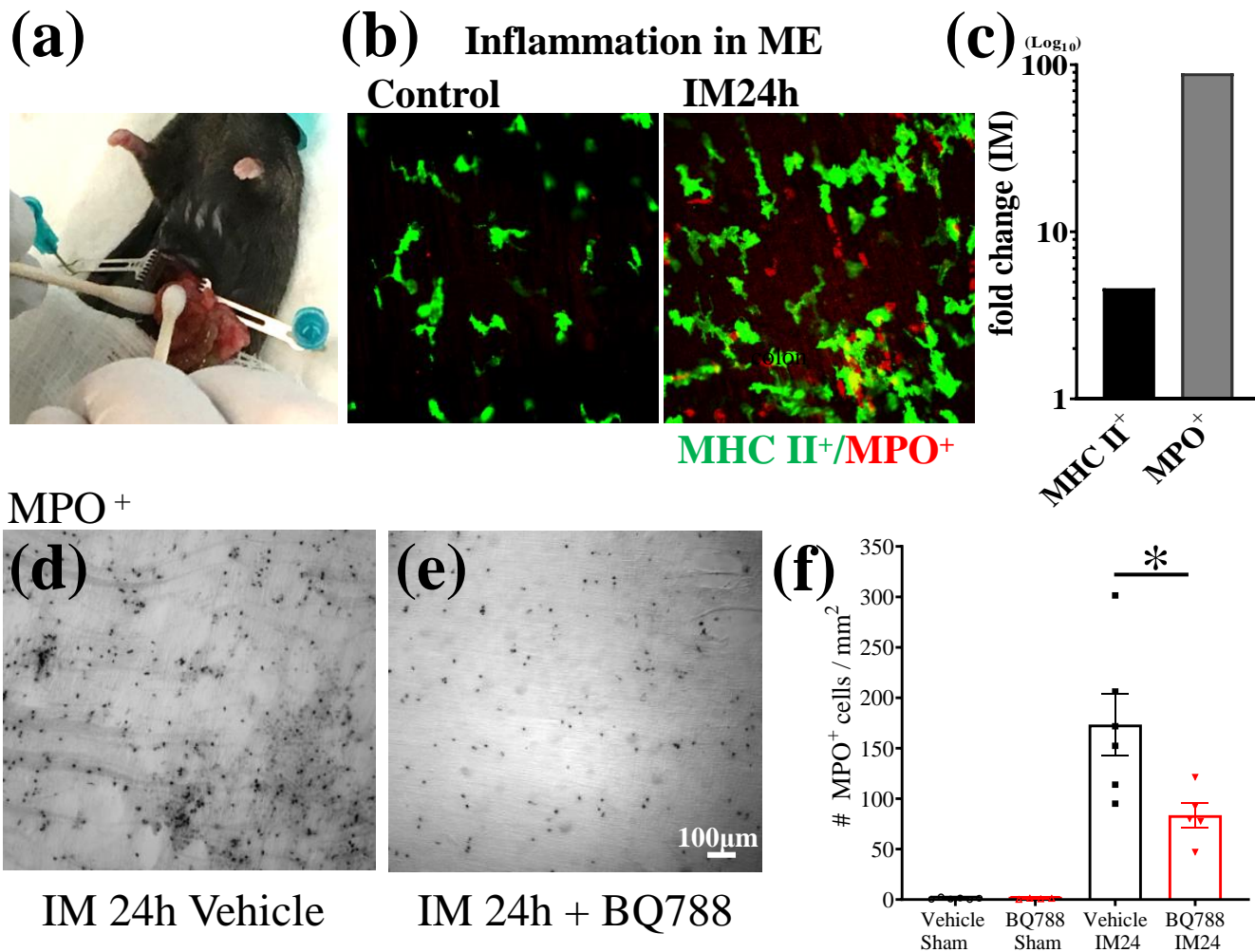


(b)



Suppl. Fig. 7

In Vivo effects of ETB_R antagonism



Suppl. Fig. 8

