

## Supplemental Online Content

Griffin BR, Vaughan-Sarrazin M, Shi Q, et al. Blood pressure, readmission, and mortality among patients hospitalized with acute kidney injury. *JAMA Netw Open*. 2024;7(5):e2410824. doi:10.1001/jamanetworkopen.2024.10824

**eTable 1.** Patient Characteristics Based on First Blood Pressure After Discharge

**eFigure 1.** Unadjusted Absolute Mortality Rates Over Time From Hospital Discharge for All Blood Pressure Categories

**eFigure 2.** Unadjusted Absolute Readmission Rates Over Time From Hospital Discharge for All Blood Pressure Categories

**eTable 2.** ACEI/ARB Stratification: Hazard Ratios and 99% Confidence Intervals for Mortality and Readmission Over Time, by Blood Pressure Category

**eFigure 3.** Predicted Monthly Mortality Rates Over Time From Hospital Discharge for an “Average” Patient, With All Variables in the Model Except the Blood Pressure Category Set to Mean Values, for All Blood Pressure Categories in Those Who Did and Did Not Have an ACEI/ARB Prescribed Within 90 Days

**eTable 3.** In Patients Without CHF at Baseline, Adjusted Hazard Ratios and 99% Confidence Intervals for Mortality and All-Cause Hospital Readmission Over Time, by Blood Pressure Category

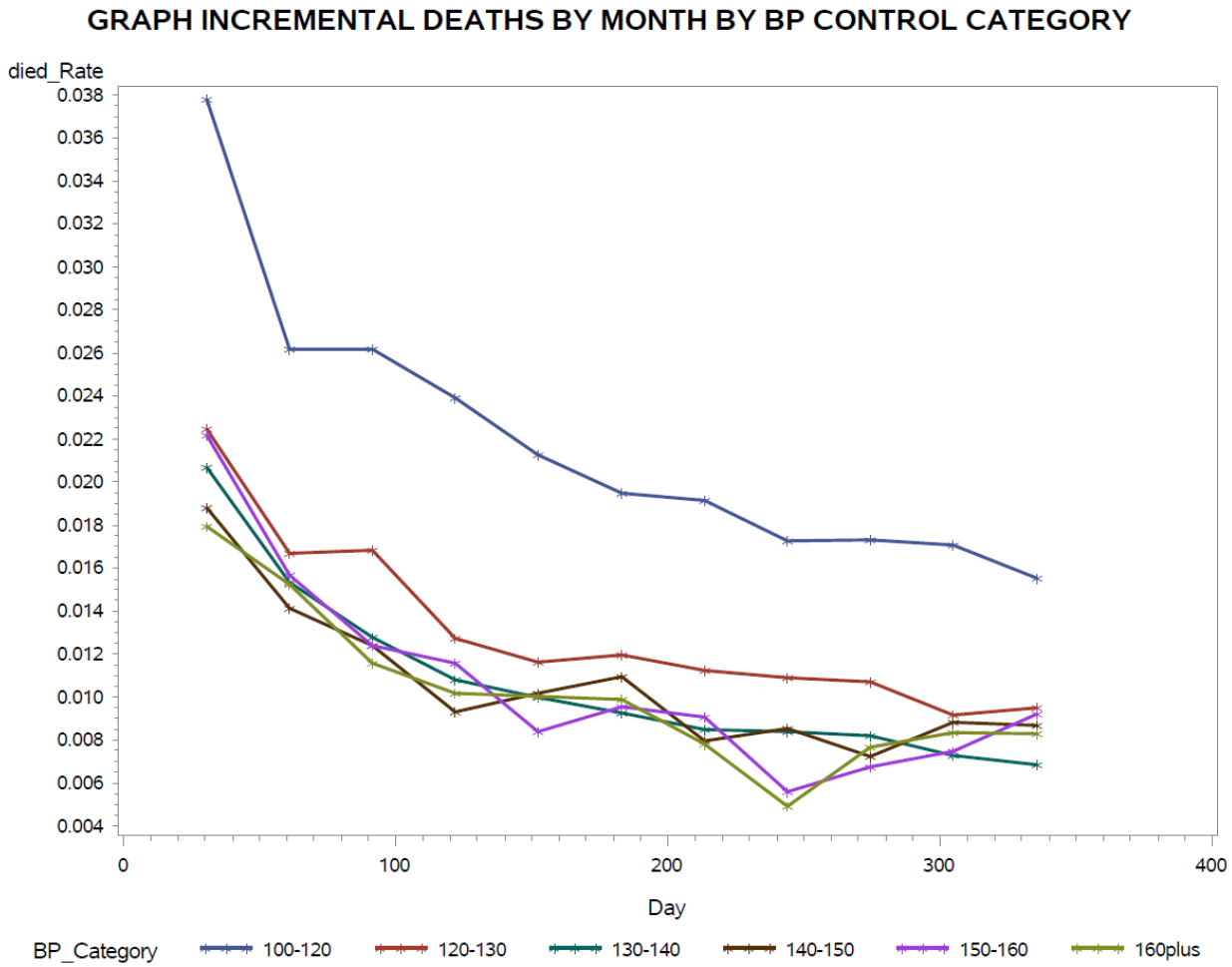
**eTable 4.** AKI Stage Stratification: Hazard Ratios and 95% Confidence Intervals for Mortality and Readmission Over Time, by Blood Pressure Category

This supplemental material has been provided by the authors to give readers additional information about their work.

**eTable 1.** Patient Characteristics Based on First Blood Pressure After Discharge

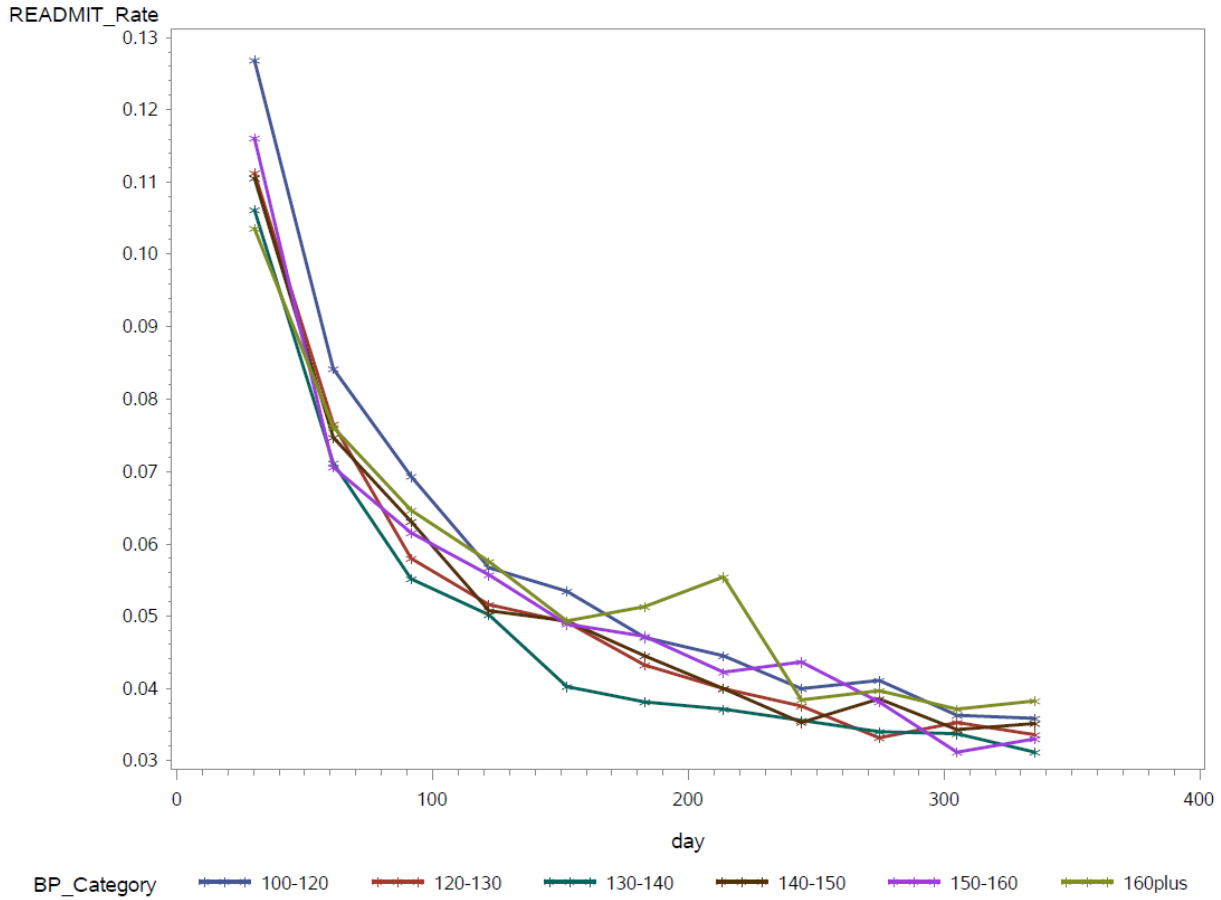
Characteristics*	<120 n=24,074	120-129 N=20,063	130-139 N=18,678	140-149 N=9,995	150-159 N=4,887	≥160 N=3,263	p-value
Age (years)							<.001
<45	546 (2.3)	472 (2.4)	410 (2.2)	143 (1.4)	65 (1.3)	26 (0.8)	
45-59	3,050 (12.7)	2,844 (14.2)	2,560 (13.7)	1,394 (13.9)	634 (13.0)	428 (13.1)	
60-64	3,247 (13.5)	2,814 (14.0)	2,546 (13.6)	1,394 (13.9)	697 (14.3)	448 (13.7)	
65-69	5,618 (23.3)	4,562 (22.7)	4,415 (23.6)	2,325 (23.3)	1,174 (24.0)	779 (23.9)	
70-74	4,385 (18.2)	3,504 (17.5)	3,351 (17.9)	1,818 (18.2)	895 (18.3)	570 (17.5)	
75-84	4,597 (19.1)	3,800 (18.9)	3,531 (18.9)	1,829 (18.3)	925 (18.9)	641 (19.6)	
>84	2,631 (10.9)	2,067 (10.3)	1,865 (10.0)	1,092 (10.9)	497 (10.2)	371 (11.4)	
Black Race	4,490 (18.9)	4,595 (19.1)	4,418 (22.0)	4,398 (23.5)	2,619 (26.2)	1,377 (28.2)	<.001
ACEI/ARB use within 60 days of discharge	10,041 (41.7)	8,366 (41.7)	8,090 (43.3)	4,713 (47.2)	2,370 (48.5)	1,719 (52.7)	<.001
Unexplained Weight Loss	1,941 (8.1)	1,274 (6.3)	1,061 (5.7)	552 (5.5)	254 (5.2)	174 (5.3)	<.001
Dementia	1,285 (5.3)	1,026 (5.1)	918 (4.9)	483 (4.8)	249 (5.1)	154 (4.7)	0.3
Congestive Heart Failure	8,383 (34.8)	5,314 (26.5)	4,412 (23.6)	2,491 (24.9)	1,208 (24.7)	808 (24.8)	<.001
Chronic Lung Disease	9,184 (38.1)	6,893 (34.4)	6,082 (32.6)	3,094 (31.0)	1,509 (30.9)	920 (28.2)	<.001
Baseline serum creatinine, mean (SD)	1.3 ± 0.6	1.3 ± 0.7	1.3 ± 0.8	1.4 ± 0.9	1.5 ± 1.0	1.7 ± 1.1	<.001
Discharge serum creatinine, mean (SD)	1.4 ± 1.2	1.5 ± 1.3	1.6 ± 1.4	1.7 ± 1.6	1.8 ± 1.6	2.0 ± 1.8	<.001
Renal Replacement Therapy During Admission	231 (1.0)	211 (1.1)	208 (1.1)	152 (1.5)	79 (1.6)	57 (1.8)	<.001
Tobacco Use	5439 (22.5)	4345 (21.7)	3858 (20.7)	2060 (20.6)	984 (20.1)	625 (19.2)	<.001
Albumin (g/g)							<.001
≤ 1.9	590 (2.5)	405 (2.0)	348 (1.9)	211 (2.1)	91 (1.9)	84 (2.6)	
2.0 -2.4	1,767 (7.3)	1,290 (6.4)	1,148 (6.1)	624 (6.2)	341 (7.0)	239 (7.3)	
2.5 – 4.4	20,676 (85.9)	17,314 (86.3)	16,227 (86.9)	8,699 (87.0)	4,234 (86.6)	2,812 (86.2)	
≥ 4.5	1,041 (4.3)	1,054 (5.3)	955 (5.1)	461 (4.6)	221 (4.5)	128 (3.9)	
Bilirubin (mg/dL)							<.001
≤ 1.9	22,312 (92.7)	18,875 (94.1)	17,729 (94.9)	9,560 (95.6)	4,713 (96.4)	3,162 (96.9)	
2.0 - 2.9	959 (4.0)	699 (3.5)	542 (2.9)	233 (2.3)	107 (2.2)	63 (1.9)	
3.0 – 4.9	464 (1.9)	306 (1.5)	249 (1.3)	111 (1.1)	41 (0.8)	26 (0.8)	
5.0 – 7.9	202 (0.8)	89 (0.4)	101 (0.5)	53 (0.5)	17 (0.3)	7 (0.2)	
≥ 8.0	137 (0.6)	94 (0.5)	57 (0.3)	38 (0.4)	9 (0.2)	5 (0.2)	
Blood Urea Nitrogen (mg/dL)							<.001
< 16.9	3,699 (15.4)	3,262 (16.3)	2,826 (15.1)	1,375 (13.8)	566 (11.6)	343 (10.5)	
17-19	1,939 (8.1)	1,699 (8.5)	1,558 (8.3)	780 (7.8)	369 (7.6)	213 (6.5)	
20-39	11,248 (46.7)	9,411 (46.9)	8,711 (46.6)	4,527 (45.3)	2,247 (46.0)	1,476 (45.2)	
40-79	5,697 (23.7)	4,563 (22.7)	4,492 (24.0)	2,639 (26.4)	1,348 (27.6)	974 (29.8)	
≥ 80	1,491 (6.2)	1,128 (5.6)	1,091 (5.8)	674 (6.7)	357 (7.3)	257 (7.9)	
Hematocrit							<.001
41-49%	21,751 (90.4)	18,374 (91.6)	16,982 (90.9)	9,138 (91.4)	4,465 (91.4)	3,026 (92.7)	
<40.9% OR ≥50%	2,323 (9.6)	1,689 (8.4)	1,696 (9.1)	857 (8.6)	422 (8.6)	237 (7.3)	
AKI Stage							<.001
1	19,301 (80.2)	15,843 (79.0)	14,672 (78.6)	7,659 (76.6)	3,700 (75.7)	2,413 (74.0)	
2	2,448 (10.2)	2,053 (10.2)	1,836 (9.8)	941 (9.4)	432 (8.8)	245 (7.5)	
3	2,325 (9.7)	2,167 (10.8)	2,170 (11.6)	1,395 (14.0)	755 (15.4)	605 (18.5)	
Proteinuria during hospital episode							<.001
normal	8187 (34.0)	6332 (31.6)	5255 (28.1)	2528 (25.3)	1118 (22.9)	677 (20.8)	
mild	11168 (46.4)	9597 (47.8)	8990 (48.1)	4848 (48.5)	2285 (46.8)	1560 (47.8)	
heavy	2492 (10.4)	2545 (12.7)	2894 (15.5)	1847 (18.5)	1123 (23.0)	758 (23.2)	
missing	2227 (9.3)	1589 (7.9)	1539 (8.2)	772 (7.7)	361 (7.4)	268 (8.2)	

**eFigure 1.** Unadjusted Absolute Mortality Rates Over Time From Hospital Discharge for All Blood Pressure Categories



**eFigure 2.** Unadjusted Absolute Readmission Rates Over Time From Hospital Discharge for All Blood Pressure Categories

**GRAPH INCREMENTAL READMISSION BY MONTH BY BP CONTROL CATEGORY**



**eTable 2.** ACEI/ARB Stratification: Hazard Ratios and 99% Confidence Intervals for Mortality and Readmission Over Time, by Blood Pressure Category

**A. No ACEI/ARB Within 60 Days**

		Systolic Blood Pressure (mm Hg)						
		<120	120-129	130-139	140-149	150-159	≥160	
<b>Days From Hospital Discharge</b>	<b>Mortality</b>	<b>60</b>	1.97 (1.45-2.66) p < 0.001	1.20 (0.88-1.64) p = 0.1	1.08 (0.78-1.48) p = 0.5	0.95 (0.67-1.36) p = 0.7	1.13 (0.76-1.69) p = 0.4	Reference
		<b>90</b>	1.91 (1.42-2.58) p < 0.001	1.17 (0.86-1.58) p = 0.2	1.01 (0.74-1.38) p = 0.9	0.92 (0.65-1.30) p = 0.5	1.07 (0.73-1.58) p = 0.6	
		<b>120</b>	1.86 (1.39-2.50) p < 0.001	1.13 (0.83-1.53) p = 0.3	0.94 (0.69-1.29) p = 0.6	0.89 (0.63-1.25) p = 0.4	1.02 (0.69-1.49) p = 0.9	
		<b>180</b>	1.77 (1.31-2.38) p < 0.001	1.06 (0.78-1.45) p = 0.6	0.83 (0.60-1.14) p = 0.1	0.83 (0.58-1.18) p = 0.2	0.91 (0.60-1.39) p = 0.6	
		<b>270</b>	1.63 (1.19-2.24) p < 0.001	0.97 (0.69-1.37) p = 0.8	0.68 (0.47-0.98) p = 0.006	0.74 (0.49-1.14) p = 0.07	0.78 (0.45-1.34) p = 0.2	
		<b>365</b>	1.51 (1.05-2.15) p = 0.003	0.89 (0.59-1.33) p = 0.4	0.56 (0.36-0.86) p < 0.001	0.67 (0.39-1.14) p = 0.051	0.66 (0.32-1.36) p = 0.1	
	<b>Readmission</b>	<b>60</b>	1.18 (1.00-1.39) p = 0.011	1.20 (0.88-1.64) p = 0.1	1.21 (0.96-1.52) p = 0.03	1.16 (0.90-1.49) p = 0.1	1.27 (0.95-1.70) p=0.03	Reference
		<b>90</b>	1.12 (0.95-1.32) p = 0.07	1.17 (0.86-1.58) p = 0.2	1.12 (0.90-1.40) p = 0.2	1.14 (0.89-1.45) p = 0.2	1.20 (0.91-1.58) p = 0.09	
		<b>120</b>	1.07 (0.91-1.26) p = 0.3	1.13 (0.83-1.53) p = 0.3	1.04 (0.84-1.29) p = 0.6	1.12 (0.88-1.42) p = 0.2	1.13 (0.86-1.48) p = 0.3	
		<b>180</b>	0.97 (0.82-1.14) p = 0.6	1.06 (0.78-1.45) p = 0.6	0.89 (0.71-1.12) p = 0.2	1.08 (0.84-1.38) p = 0.4	1.00 (0.75-1.34) p > 0.99	
		<b>270</b>	0.83 (0.69-1.01) p = 0.014	0.97 (0.69-1.37) p = 0.8	0.71 (0.54-0.93) p = 0.001	1.02 (0.75-1.39) p = 0.9	0.84 (0.57-1.23) p = 0.2	
		<b>365</b>	0.72 (0.57-0.90) p < 0.001	0.89 (0.59-1.33) p = 0.4	0.57 (0.41-0.79) p < 0.001	0.97 (0.65-1.43) p = 0.8	0.70 (0.42-1.16) p = 0.07	

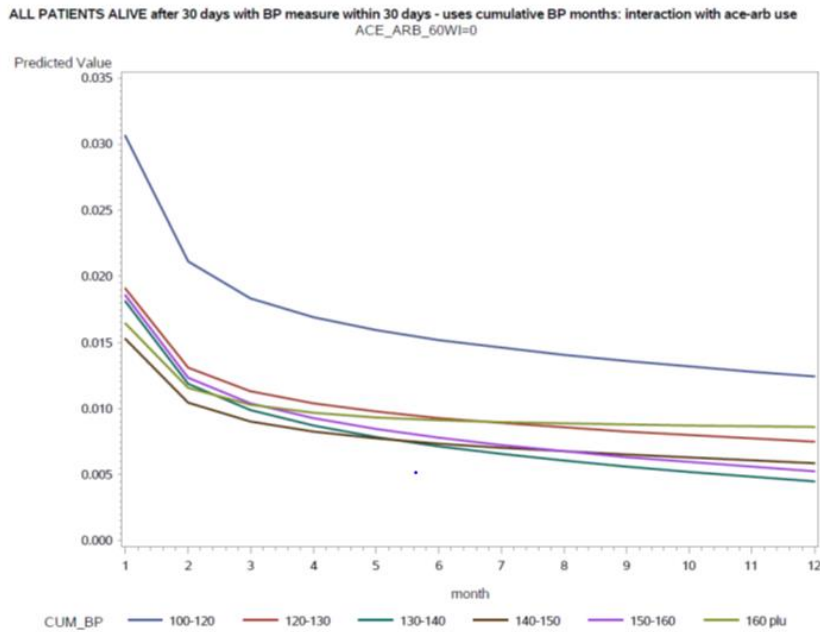
**B. ACEI/ARB Within 60 Days**

		Systolic Blood Pressure (mm Hg)						
		<120	120-129	130-139	140-149	150-159	≥160	
<b>Days From Hospital Discharge</b>	<b>Mortality</b>	<b>60</b>	2.19 (1.77-2.70) p < 0.001	1.37 (1.10-1.71) p < 0.001	1.02 (0.86-1.21) p = 0.8	1.02 (0.85-1.23) p = 0.8	1.07 (0.87-1.33) p = 0.4	Reference
		<b>90</b>	2.16 (1.76-2.66) p < 0.001	1.32 (1.06-1.64) p = 0.001	0.96 (0.82-1.14) p = 0.6	0.97 (0.81-1.16) p = 0.7	1.04 (0.85-1.28) p = 0.6	
		<b>120</b>	2.13 (1.74-2.61) p < 0.001	1.27 (1.03-1.57) p = 0.003	0.91 (0.77-1.08) p = 0.2	0.92 (0.77-1.11) p = 0.3	1.02 (0.83-1.25) p = 0.8	
		<b>180</b>	2.08 (1.69-2.55) p < 0.001	1.18 (0.95-1.47) p = 0.048	0.81 (0.68-0.97) p = 0.002	0.84 (0.69-1.02) p = 0.019	0.96 (0.77-1.21) p = 0.7	
		<b>270</b>	2.00 (1.59-2.51) p < 0.001	1.06 (0.82-1.36) p = 0.6	0.69 (0.56-0.84) p < 0.001	0.72 (0.57-0.92) p = 0.001	0.89 (0.66-1.21) p = 0.3	
		<b>365</b>	1.92 (1.47-2.51) p < 0.001	0.95 (0.69-1.29) p = 0.6	0.58 (0.45-0.74) p < 0.001	0.63 (0.46-0.85) p < 0.001	0.82 (0.55-1.23) p = 0.2	
	<b>Readmission</b>	<b>60</b>	1.32 (1.19-1.46) p < 0.001	1.14 (1.02-1.27) p = 0.002	1.08 (0.97-1.20) p = 0.06	1.17 (1.04-1.32) p < 0.001	1.16 (1.01-1.32) p = 0.005	Reference
		<b>90</b>	1.23 (1.11-1.36) p < 0.001	1.08 (0.98-1.20) p = 0.051	1.02 (0.92-1.14) p = 0.5	1.12 (1.00-1.26) p = 0.008	1.11 (0.98-1.27) p = 0.03	
		<b>120</b>	1.15 (1.04-1.27) p < 0.001	1.03 (0.93-1.14) p = 0.5	0.97 (0.88-1.08) p = 0.5	1.07 (0.96-1.20) p = 0.1	1.07 (0.94-1.22) p = 0.2	
		<b>180</b>	1.00 (0.90-1.11) p > 0.99	0.93 (0.83-1.04) p = 0.09	0.87 (0.78-0.98) p = 0.002	0.98 (0.87-1.11) p = 0.7	0.98 (0.85-1.14) p=0.8	
		<b>270</b>	0.81 (0.71-0.93) p < 0.001	0.80 (0.69-0.92) p < 0.001	0.75 (0.65-0.86) p < 0.001	0.86 (0.73-1.01) p = 0.02	0.87 (0.71-1.06) p = 0.08	
		<b>365</b>	0.66 (0.56-0.79) p < 0.001	0.68 (0.57-0.82) p < 0.001	0.64 (0.54-0.76) p < 0.001	0.76 (0.61-0.93) p = 0.001	0.77 (0.59-1.01) p = 0.013	

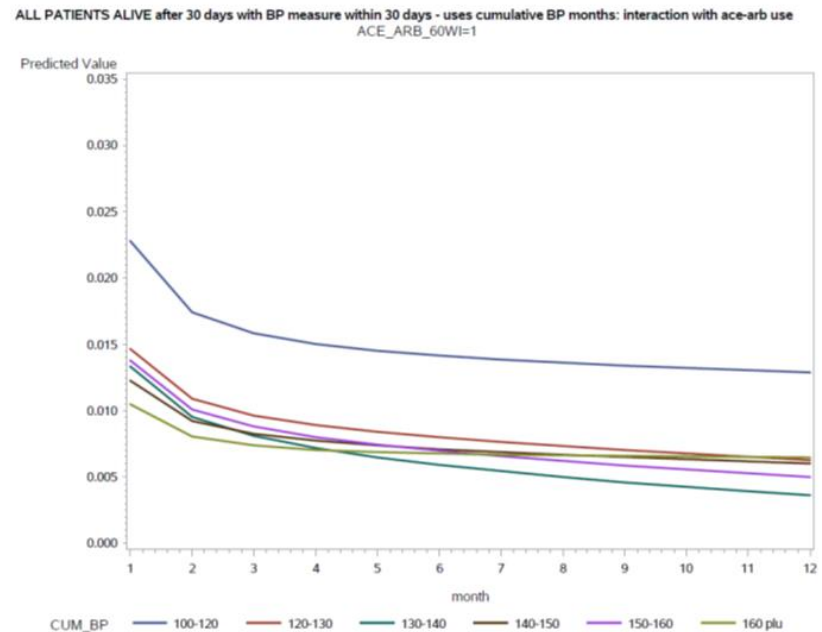
Models were adjusted for age, comorbidities (chronic lung disease, congestive heart failure, dementia, malignancy, unexplained weight loss), laboratory values (hematocrit, blood urea nitrogen, bilirubin, albumin), and kidney-specific variables (AKI stage, community-acquired vs in-hospital AKI, proteinuria during hospital episode, baseline creatinine, discharge creatinine).

**eFigure 3.** Predicted Monthly Mortality Rates Over Time From Hospital Discharge for an “Average” Patient, With All Variables in the Model Except the Blood Pressure Category Set to Mean Values, for All Blood Pressure Categories in Those Who Did and Did Not Have an ACEI/ARB Prescribed Within 90 Days

**A. No ACEI/ARB Use**



**B. ACEI/ARB Use**



**eTable 3.** In Patients Without CHF at Baseline, Adjusted Hazard Ratios and 99% Confidence Intervals for Mortality and All-Cause Hospital Readmission Over Time, by Blood Pressure Category

		Systolic Blood Pressure (mm Hg)					Reference	
		<120	120-129	130-139	140-149	150-159		≥160
Days From Hospital Discharge	Mortality	60	2.02 (1.63-2.51) p < 0.001	1.25 (1.00-1.57) p = 0.01	1.11 (0.88-1.39) p = 0.3	1.09 (0.85-1.41) p = 0.4	1.19 (0.89-1.60) p = 0.1	Reference
		90	2.00 (1.62-2.46) p < 0.001	1.21 (0.97-1.50) p = 0.03	1.03 (0.83-1.28) p = 0.7	1.07 (0.84-1.37) p = 0.5	1.13 (0.85-1.49) p = 0.3	
		120	1.97 (1.60-2.42) p < 0.001	1.16 (0.94-1.44) p = 0.07	0.96 (0.77-1.19) p = 0.6	1.05 (0.83-1.34) p = 0.6	1.07 (0.81-1.40) p = 0.5	
		180	1.92 (1.55-2.36) p < 0.001	1.08 (0.86-1.34) p = 0.4	0.84 (0.67-1.05) p = 0.04	1.02 (0.80-1.30) p = 0.9	0.95 (0.71-1.28) p = 0.7	
		270	1.84 (1.46-2.32) p < 0.001	0.96 (0.74-1.24) p = 0.7	0.68 (0.52-0.88) p < 0.001	0.97 (0.72-1.30) p = 0.8	0.81 (0.55-1.19) p = 0.2	
		365	1.77 (1.34-2.32) p < 0.001	0.86 (0.63-1.17) p = 0.2	0.55 (0.40-0.76) p < 0.001	0.92 (0.63-1.34) p = 0.6	0.68 (0.41-1.14) p = 0.054	
	Readmission	60	1.28 (1.15-1.42) p < 0.001	1.14 (1.02-1.27) p = 0.002	1.07 (0.96-1.20) p = 0.09	1.10 (0.98-1.24) p = 0.04	1.15 (1.00-1.31) p = 0.009	Reference
		90	1.21 (1.09-1.34) p < 0.001	1.09 (0.98-1.21) p = 0.04	1.02 (0.92-1.13) p = 0.6	1.06 (0.95-1.19) p = 0.2	1.11 (0.98-1.27) p = 0.04	
		120	1.14 (1.03-1.27) p = 0.001	1.04 (0.94-1.15) p = 0.3	0.97 (0.87-1.08) p = 0.5	1.03 (0.92-1.15) p = 0.5	1.08 (0.95-1.23) p = 0.1	
		180	1.03 (0.92-1.14) p = 0.5	0.95 (0.85-1.06) p = 0.2	0.88 (0.78-0.98) p = 0.002	0.96 (0.85-1.09) p = 0.4	1.01 (0.88-1.17) p = 0.8	
		270	0.87 (0.77-0.99) p = 0.007	0.83 (0.72-0.95) p < 0.001	0.75 (0.66-0.86) p < 0.001	0.87 (0.75-1.02) p = 0.02	0.92 (0.76-1.12) p = 0.3	
		365	0.74 (0.63-0.87) p < 0.001	0.72 (0.61-0.85) p < 0.001	0.65 (0.55-0.76) p < 0.001	0.79 (0.64-0.96) p = 0.002	0.84 (0.65-1.08) p = 0.08	

\* P-value < 0.05

Models were adjusted for age, comorbidities (chronic lung disease, congestive heart failure, dementia, malignancy, unexplained weight loss), laboratory values (hematocrit, blood urea nitrogen, bilirubin, albumin), and kidney-specific variables (AKI stage, community-acquired vs in-hospital AKI, proteinuria, baseline creatinine, discharge creatinine)

**eTable 4.** AKI Stage Stratification: Hazard Ratios and 95% Confidence Intervals for Mortality and Readmission Over Time, by Blood Pressure Category

A. Stage 1 AKI

		Systolic Blood Pressure (mm Hg)						
		<120	120-129	130-139	140-149	150-159		≥160
Days From Hospital Discharge	Mortality	60	2.21 (1.81-2.71) p < 0.001	1.38 (1.11-1.70) p < 0.001	1.21 (0.98-1.50) p = 0.02	1.14 (0.90-1.45) p = 0.1	1.22 (0.92-1.61) p = 0.07	Reference
		90	2.17 (1.78-2.64) p < 0.001	1.33 (1.08-1.63) p < 0.001	1.13 (0.92-1.40) p = 0.1	1.11 (0.88-1.40) p = 0.2	1.15 (0.89-1.50) p = 0.2	
		120	2.13 (1.75-2.59) p < 0.001	1.28 (1.04-1.56) p = 0.002	1.06 (0.86-1.30) p = 0.5	1.08 (0.86-1.35) p = 0.4	1.09 (0.84-1.42) p = 0.4	
		180	2.05 (1.68-2.50) p < 0.001	1.19 (0.96-1.46) p = 0.04	0.92 (0.74-1.14) p = 0.3	1.02 (0.80-1.29) p = 0.9	0.98 (0.74-1.30) p = 0.9	
		270	1.94 (1.56-2.40) p < 0.001	1.06 (0.84-1.34) p = 0.5	0.74 (0.58-0.95) p = 0.002	0.93 (0.70-1.24) p = 0.5	0.84 (0.58-1.20) p = 0.2	
		365	1.83 (1.43-2.33) p < 0.001	0.95 (0.71-1.26) p = 0.6	0.60 (0.45-0.82) p < 0.001	0.85 (0.59-1.22) p = 0.2	0.71 (0.44-1.15) p = 0.07	
	Readmission	60	1.33 (1.20-1.47) p < 0.001	1.20 (1.08-1.33) p < 0.001	1.13 (1.01-1.25) p = 0.004	1.17 (1.05-1.32) p < 0.001	1.19 (1.04-1.36) p = 0.001	Reference
		90	1.25 (1.13-1.39) p < 0.001	1.14 (1.03-1.26) p = 0.001	1.07 (0.96-1.19) p = 0.09	1.12 (1.01-1.26) p = 0.007	1.15 (1.01-1.30) p = 0.005	
		120	1.18 (1.07-1.31) p < 0.001	1.08 (0.98-1.20) p = 0.04	1.02 (0.92-1.13) p = 0.7	1.08 (0.96-1.20) p = 0.09	1.11 (0.97-1.26) p = 0.04	
		180	1.05 (0.95-1.17) p = 0.2	0.98 (0.88-1.09) p = 0.7	0.92 (0.83-1.03) p = 0.047	0.99 (0.88-1.12) p = 0.8	1.03 (0.89-1.18) p = 0.6	
		270	0.89 (0.78-1.00) p = 0.01	0.85 (0.74-0.96) p = 0.001	0.79 (0.69-0.90) p < 0.001	0.87 (0.75-1.01) p = 0.02	0.92 (0.76-1.11) p = 0.2	
		365	0.75 (0.64-0.87) p < 0.001	0.73 (0.62-0.86) p < 0.001	0.68 (0.58-0.80) p < 0.001	0.77 (0.63-0.93) p = 0.001	0.82 (0.64-1.06) p = 0.046	

B. Stage 2+3 AKI

		Systolic Blood Pressure (mm Hg)						
		<120	120-129	130-139	140-149	150-159		≥160
Days From Hospital Discharge	Mortality	60	2.20 (1.57-3.07) p < 0.001	1.33 (0.94-1.88) p = 0.04	1.16 (0.81-1.66) p = 0.3	1.00 (0.67-1.49) p = 0.9	1.31 (0.83-2.05) p = 0.13	Reference
		90	2.15 (1.55-2.98) p < 0.001	1.30 (0.92-1.82) p = 0.047	1.07 (0.76-1.52) p = 0.6	0.99 (0.67-1.46) p = 0.9	1.22 (0.79-1.88) p = 0.2	
		120	2.11 (1.53-2.91) p < 0.001	1.27 (0.91-1.77) p = 0.07	0.99 (0.70-1.40) p = 0.9	0.99 (0.68-1.44) p = 0.9	1.14 (0.74-1.76) p = 0.4	
		180	2.03 (1.46-2.81) p < 0.001	1.21 (0.86-1.71) p = 0.2	0.84 (0.59-1.21) p = 0.2	0.98 (0.65-1.45) p = 0.9	1.00 (0.62-1.62) p > 0.99	
		270	1.91 (1.33-2.75) p < 0.001	1.13 (0.75-1.69) p = 0.4	0.66 (0.43-1.03) p = 0.02	0.96 (0.58-1.59) p = 0.8	0.82 (0.43-1.57) p = 0.4	
		365	1.80 (1.17-2.77) p < 0.001	1.05 (0.64-1.73) p = 0.8	0.52 (0.30-0.91) p = 0.002	0.94 (0.49-1.82) p = 0.8	0.67 (0.28-1.59) p = 0.2	
	Readmission	60	1.15 (0.96-1.36) p = 0.04	0.99 (0.83-1.18) p = 0.9	0.93 (0.78-1.11) p = 0.3	1.02 (0.84-1.23) p = 0.8	1.00 (0.80-1.24) p = 0.9	Reference
		90	1.07 (0.90-1.26) p = 0.3	0.94 (0.79-1.11) p = 0.3	0.87 (0.73-1.03) p = 0.03	0.96 (0.80-1.16) p = 0.6	0.96 (0.78-1.19) p = 0.7	
		120	0.99 (0.84-1.17) p = 0.9	0.89 (0.75-1.05) p = 0.07	0.81 (0.68-0.96) p = 0.001	0.91 (0.75-1.09) p = 0.2	0.93 (0.75-1.16) p = 0.4	
		180	0.86 (0.72-1.03) p = 0.03	0.79 (0.66-0.95) p = 0.001	0.70 (0.59-0.85) p < 0.001	0.81 (0.66-1.00) p = 0.009	0.87 (0.68-1.12) p = 0.2	
		270	0.69 (0.55-0.87) p < 0.001	0.67 (0.53-0.85) p < 0.001	0.57 (0.46-0.72) p < 0.001	0.68 (0.52-0.90) p < 0.001	0.79 (0.56-1.12) p = 0.08	
		365	0.56 (0.42-0.75) p < 0.001	0.57 (0.42-0.77) p < 0.001	0.47 (0.35-0.63) p < 0.001	0.58 (0.40-0.83) p < 0.001	0.72 (0.45-1.14) p = 0.06	

Models were adjusted for age, comorbidities (chronic lung disease, congestive heart failure, dementia, malignancy, unexplained weight loss), laboratory values (hematocrit, blood urea nitrogen, bilirubin, albumin), and kidney-specific variables (AKI stage, community-acquired vs in-hospital AKI, proteinuria, baseline creatinine, discharge creatinine).