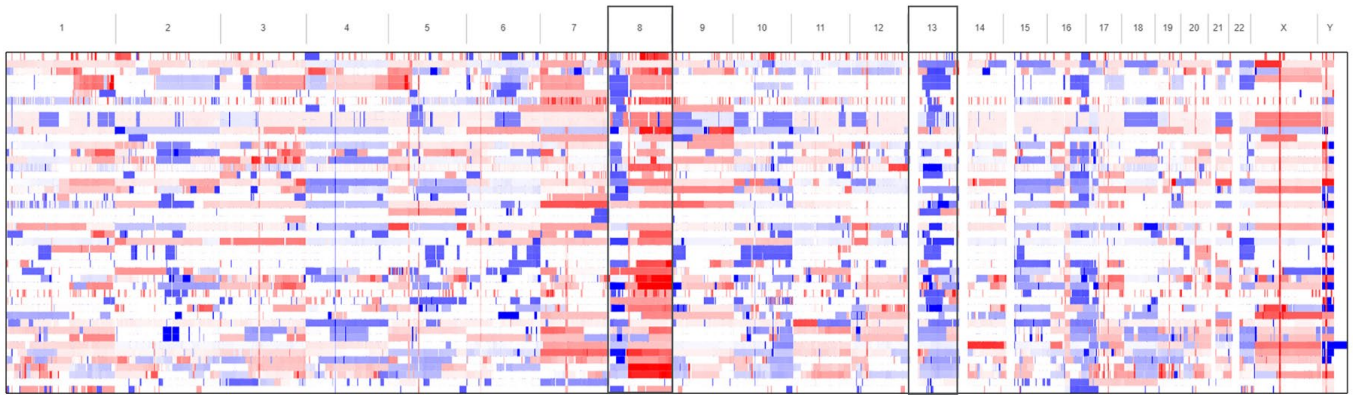


Figure S2

A

Chromosome gains and losses in MDA PCa PDX



B

PTEN and RB1 CNV and mRNA levels in MDA PCa PDXs

	PTEN	RB1
117-9	Gain	
133-4		
146-12	DeepDel	
152-1	DeepDel	
153-7	DeepDel	
163-A		
173-2		
174-6		
175-6		
178-11	DeepDel	
180-30		
183-A		
200-0		*
203-A	DeepDel	
250-15	DeepDel	ShalDel
265-8		
266-A		*
270-A		
274-2		
280-9		
285-3*		
306-14*		
316-1		
316-2		
320-1		
322-2		
327-2		
352-8*		
377-1		
118b		
177-8*		
315-8*		
144-4		
144-13		
146-10		
150-7		
155-2		
273-A		
277-6		
312-7		
328-5		
337-A		
342-8		
355-9		*
274-2	DeepDel	
280-9		
285-3		
306-14		
316-1		
316-2		
320-1		
322-2		
327-2		
352-8		
377-1		
118b		
177-8		
315-8		
144-4		
144-13		
146-10		
150-7		
155-2		
273-A		
277-6		
312-7		
328-5		
337-A		
342-8		
355-9		*

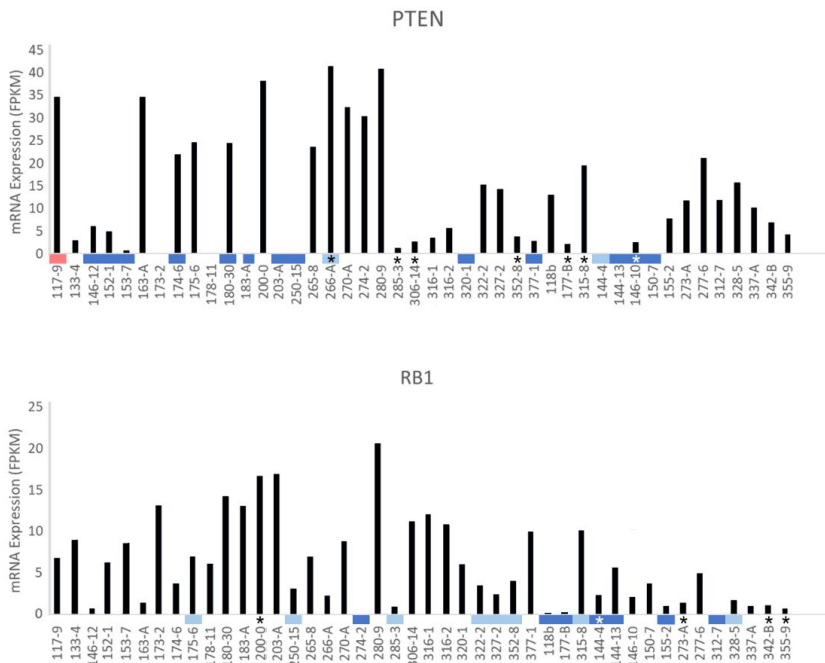


Fig S2. General copy number profile and association with expression for PTEN and RB1. A. Segmented copy number data obtained from whole genome sequencing. Chromosomal gains and losses in all chromosomes of all 44 MDA PCa PDX. Segment gains and losses are depicted in red or blue, respectively. **B. Correlation of copy number variation (CNV) with RNA expression of PTEN and RB1 in MDA PCa PDX cohort.** CNV of Phosphatase And Tensin Homolog (PTEN) and Retinoblastoma 1 (RB1), based on whole genome sequencing (WGS) data (left) and RNA expression levels (right). * indicates full or partial copy number/ transcript loss determined by manual inspection. FPKM: fragments per kilobase of transcript per million mapped reads.