

Figure S4

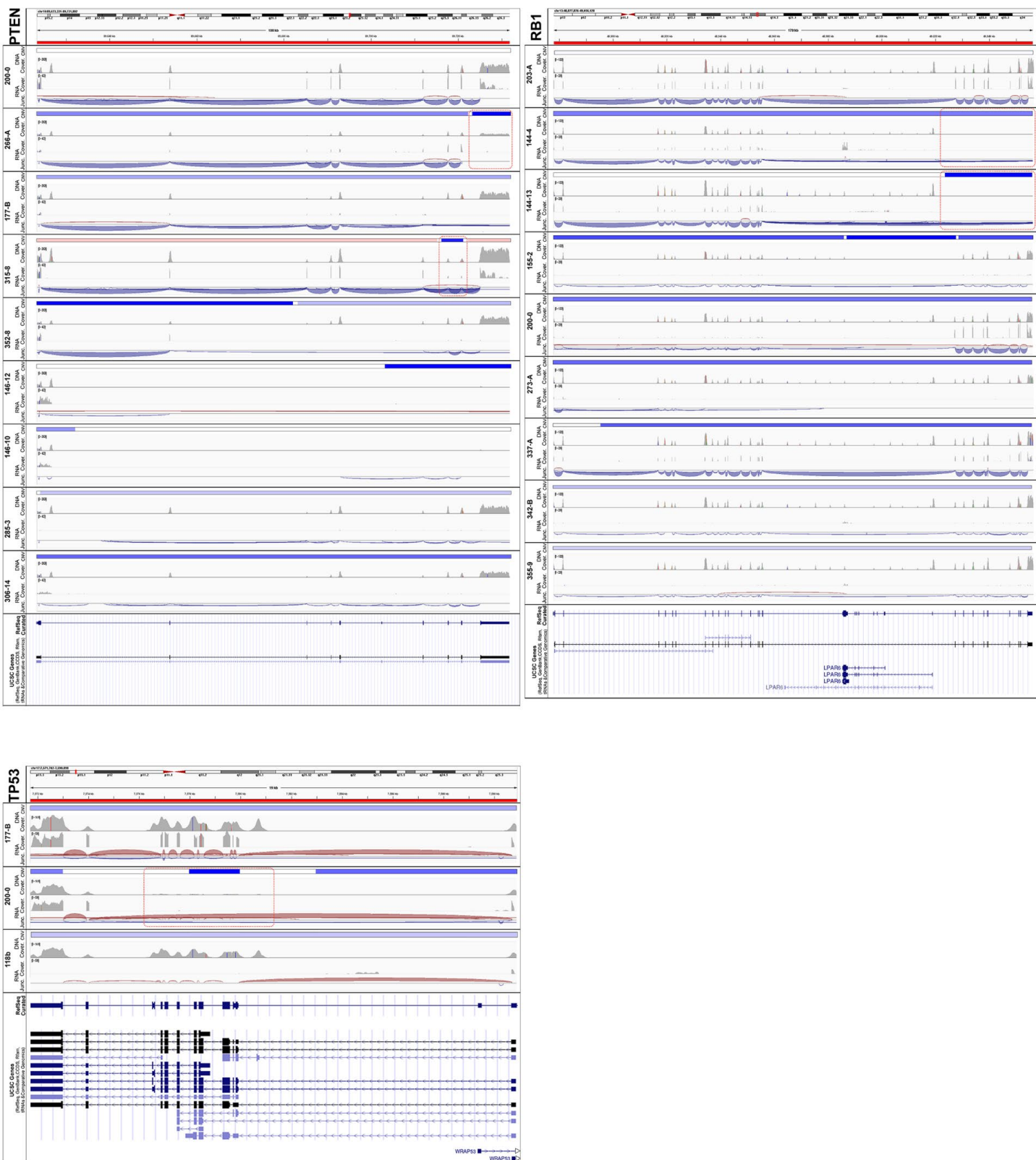


Fig S4. Detail of manually curated full or partial copy number/ transcript loss. Analysis was done for Phosphatase And Tensin Homolog (PTEN) and Retinoblastoma 1 (RB1) and Tumor Protein 53 (TP53) genes. DNA coverage (reads) and CNV, and RNA coverage (reads) and junctions are shown. Dotted red squares depict specific regions with null or reduced read at both DNA and RNA level.