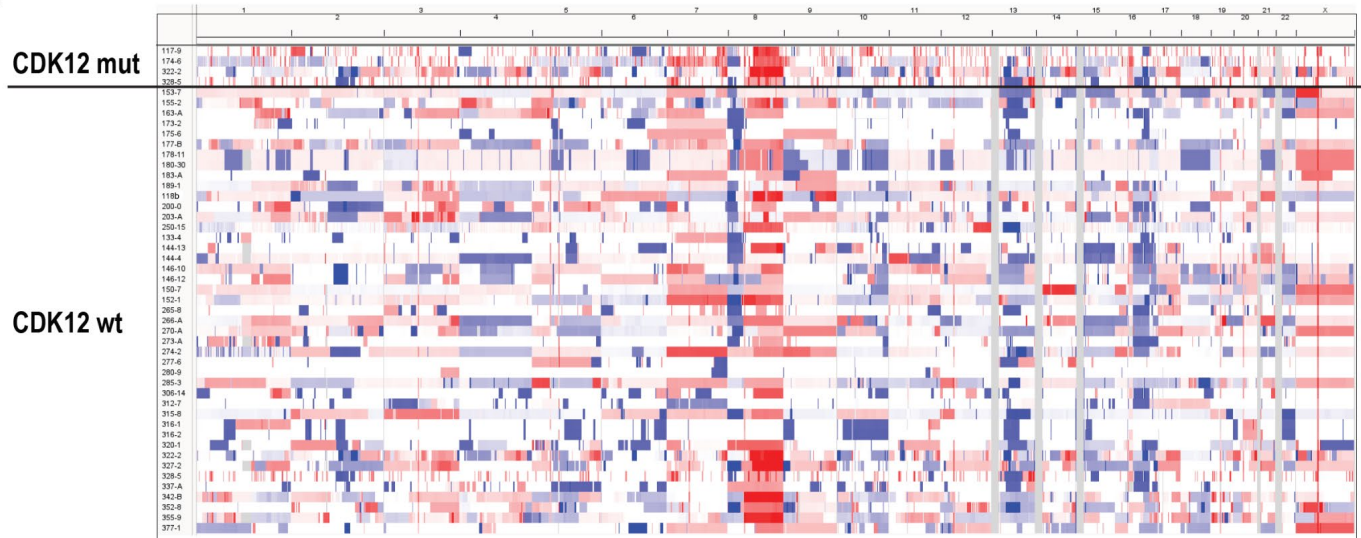
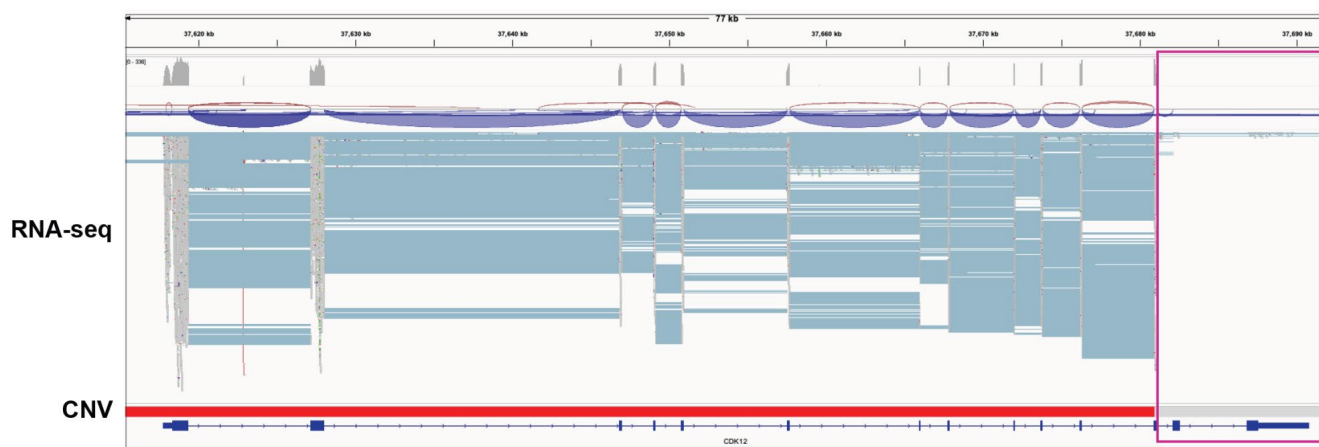


A

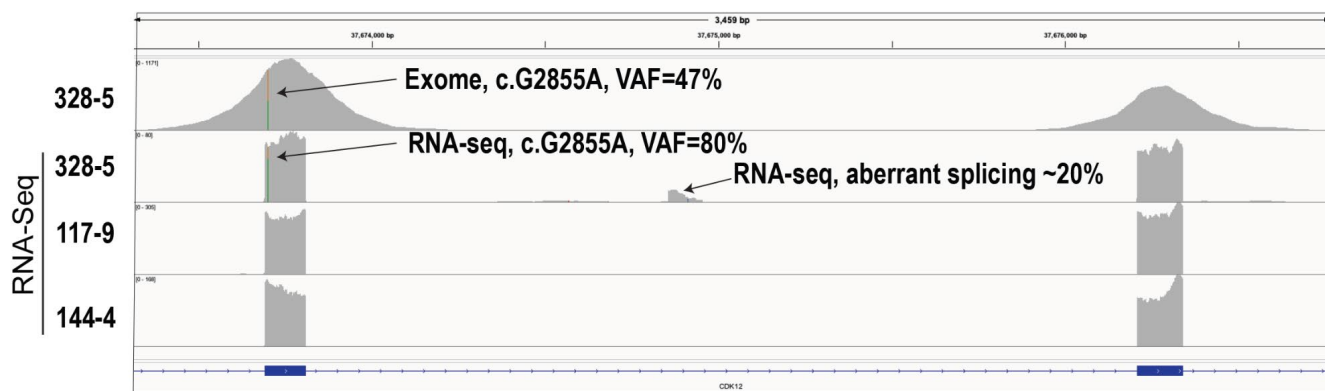


B

117-9



C



**Fig S5. CDK12 loss of function in MDA PCa PDX.** **A.** Segmented copy number data obtained from whole genome sequencing in all chromosomes for MDA PCa PDX grouped by CDK12 mutational status. MDA PCa PDX exhibit the typical CNV pattern associated with CDK12 loss of function. Typically, CDK12 loss of function in PCa is associated with biallelic mutations and a stereotypical copy number profile characterized by small focal gains caused by genomic instability linked to *CDK12* deficiency. **B.** Detail of manually curated CDK12 alteration exhibit as partial transcript loss (red rectangle) in MDA PCa 117-9. **C.** Detail of CDK12 mutation in MDA PCa 328-5 detected at both DNA and RNA levels. MDA PCa 144-4 and 117-9 are shown as reference.