

## Taipei Medical University Clinical Research Database (TMUCRD) – A Collaborative Hospital EHR Database Aligned with International Common Data Standards

### Supplement

#### Table of Contents

<b>Figure S1. TMUCRD Relationship Diagram .....</b>	<b>2</b>
<b>Table S1. Detailed information of laboratory tests from TMUCRD .....</b>	<b>3</b>

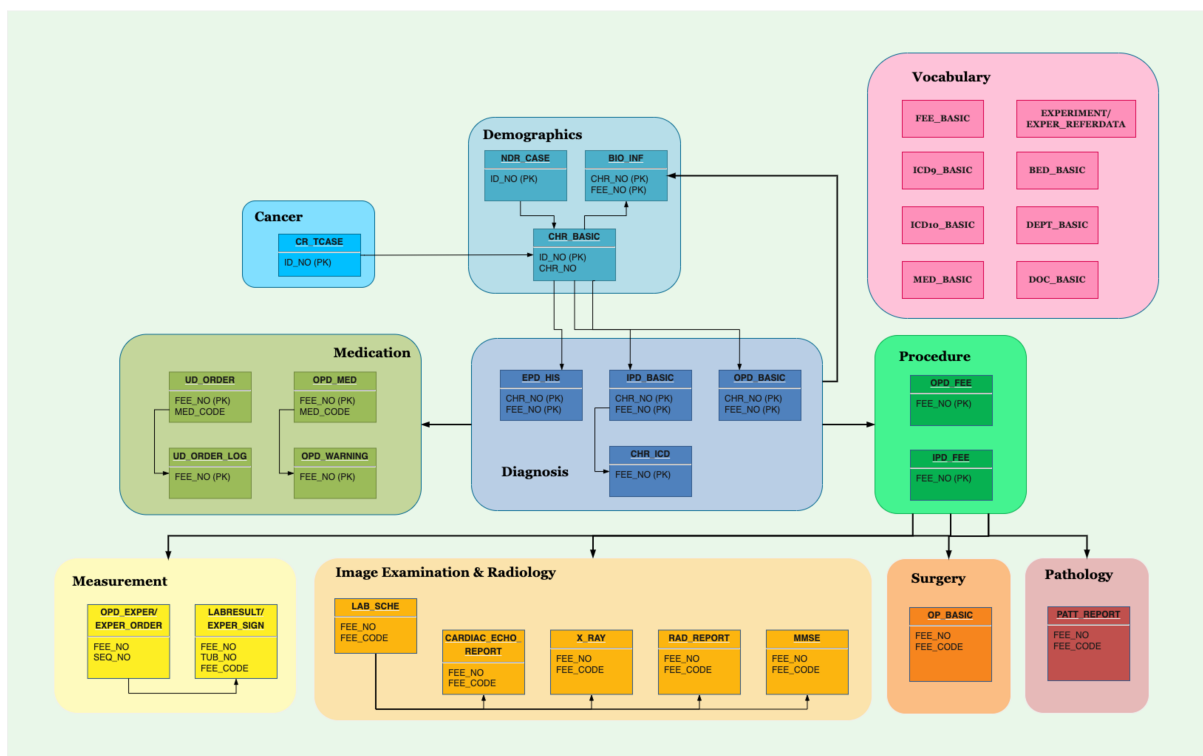


Figure S1. TMUCRD Relationship Diagram

Note: TMUCRD, Taipei Medical University Clinical Research Database;

**Table S1.** Detailed information of laboratory tests from TMUCRD

Year	WFH, n (million)	SHH, n (million)	TMUH, n (million)	#Patients, n (thousand)
2004	1.151	0	0	90.6
2005	1.010	0	0	84.8
2006	1.053	0	0	96
2007	1.138	0	0	98.2
2008	1.133	0.183	0	117.8
2009	1.200	0.724	0	159.9
2010	1.188	1.059	0	171.5
2011	1.011	1.280	0.062	162
2012	1.468	1.504	1.725	300.4
2013	1.557	1.670	1.963	315.5
2014	1.501	1.739	2.145	315.6
2015	2.825	1.873	2.335	350.9
2016	3.372	2.201	2.342	372.1
2017	3.428	2.485	2.384	377.6
2018	3.477	2.722	2.318	381.1
2019	3.636	3.025	2.277	392.1
2020	3.732	3.022	2.108	369.6
2021	3.799	3.038	2.208	359.2

**Note:** WFH, Wan-Fang Hospital; SHH, Shuang-Ho Hospital; TMUH, Taipei Medical University Hospital; TMUCRD, Taipei Medical University Clinical Research Database;