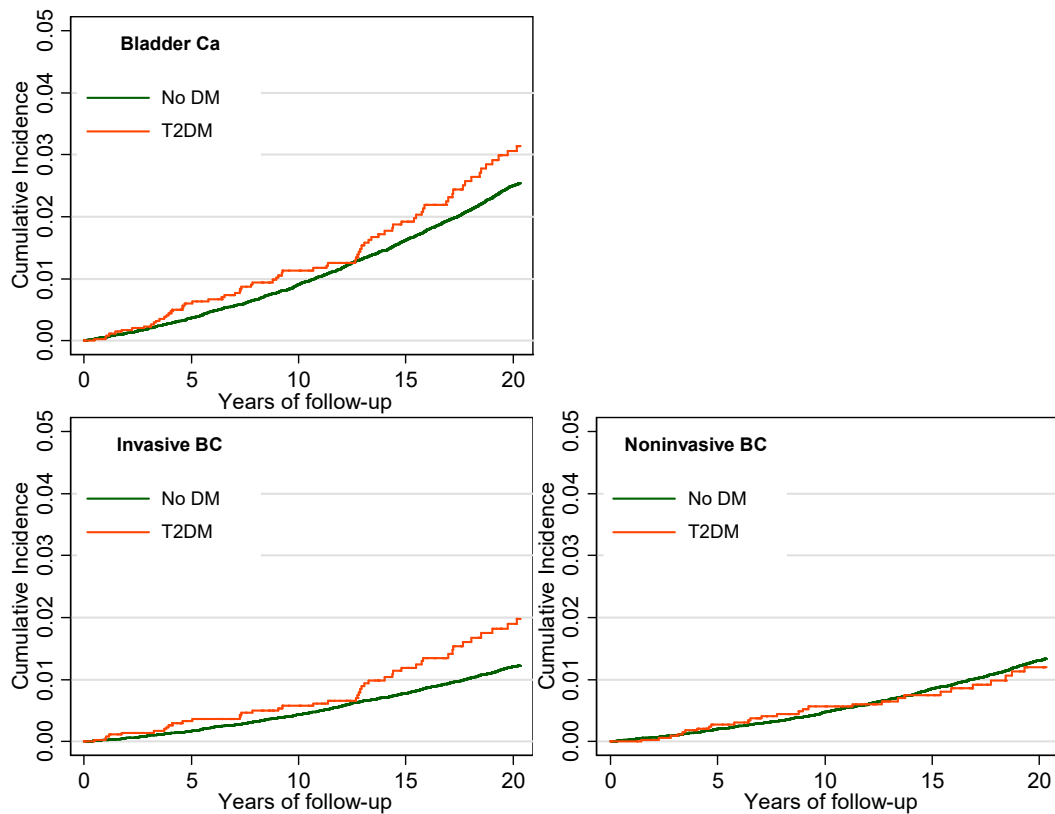


**SUPPLEMENTARY MATERIALS to:****European Journal of Epidemiology**

Article:

**P.A. van den Brandt “Diabetes and the risk of bladder cancer subtypes in men and women; results from the Netherlands Cohort Study”**

**Supplementary Figure S1.** Cumulative incidence (proportion) of overall bladder cancer, invasive and noninvasive bladder cancer, according to Type 2 diabetes mellitus (T2DM) status, Netherlands Cohort Study.