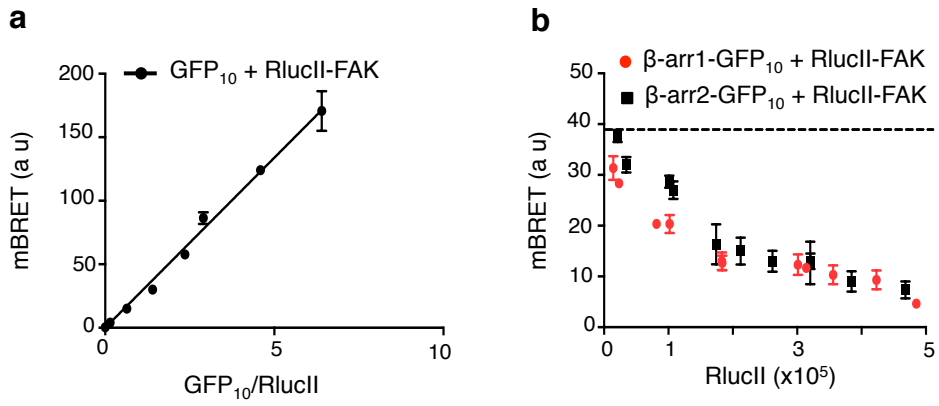
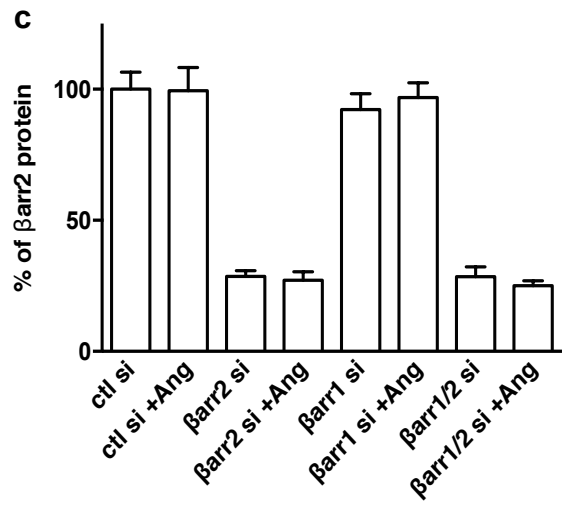
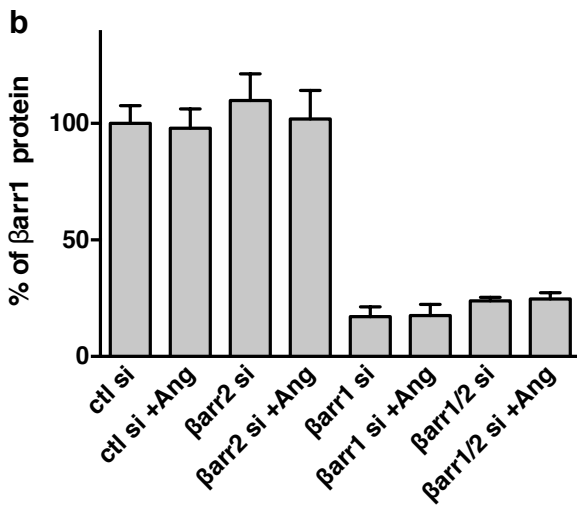
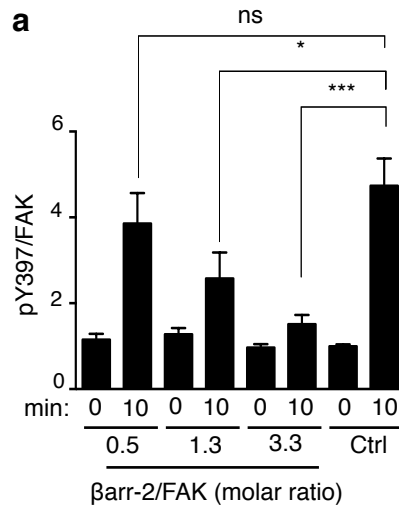


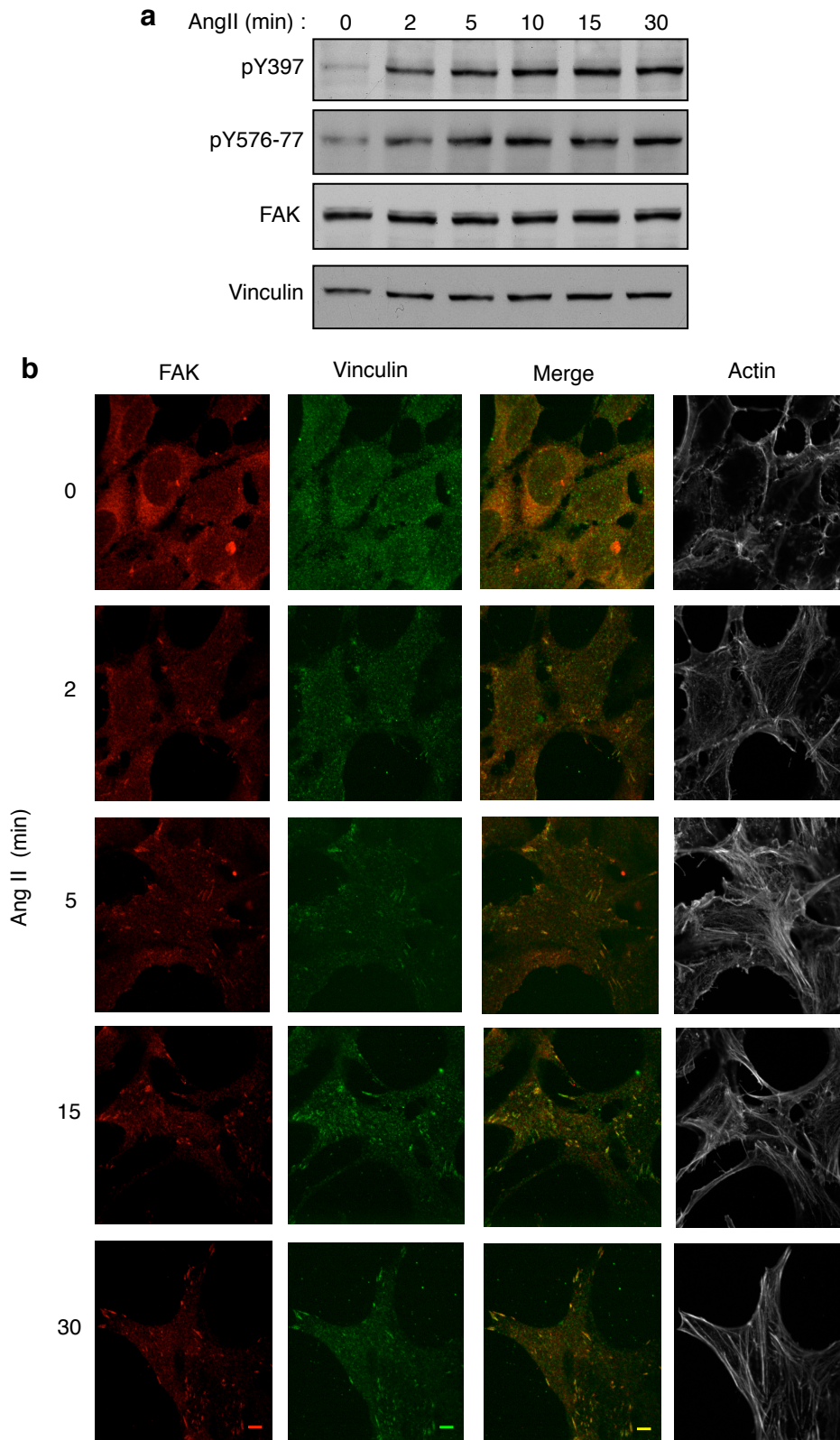
Supplementary Figure 1
Alexander et al- Ensen



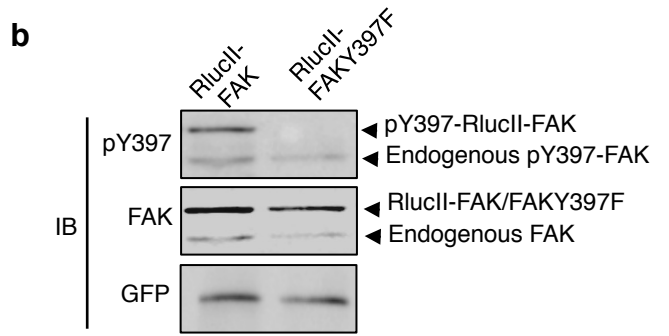
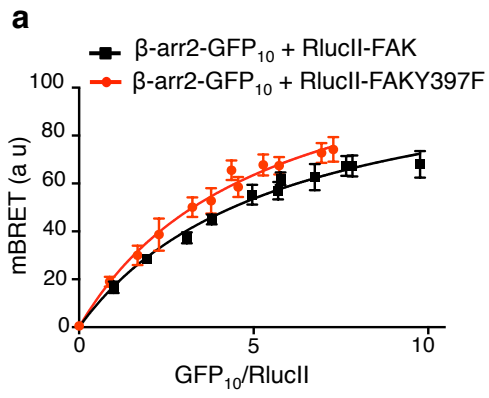
Supplementary Figure 2
Alexander et al- Ensen



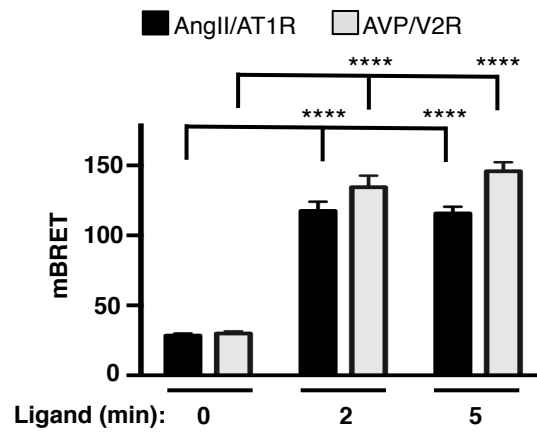
Supplementary Figure 3
Alexander et al- Enslin



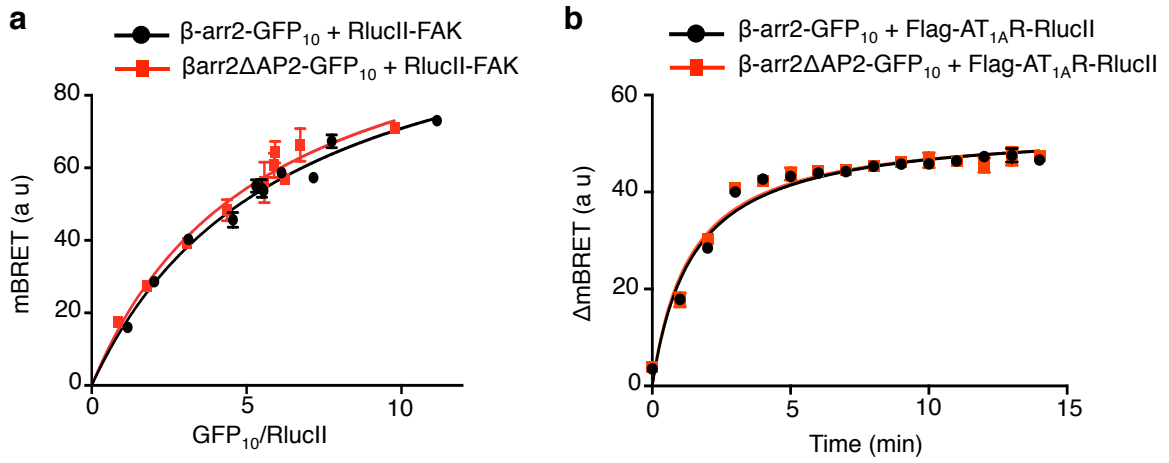
Supplementary Figure 4
Alexander et al- Enslin



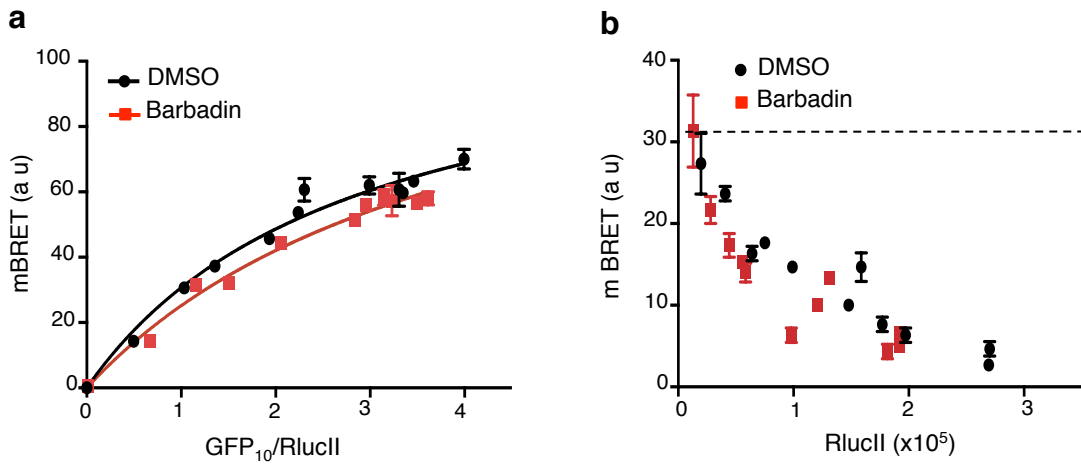
Supplementary Figure 5
 Alexander et al- Enslin



Supplementary Figure 6
Alexander et al- Enslin

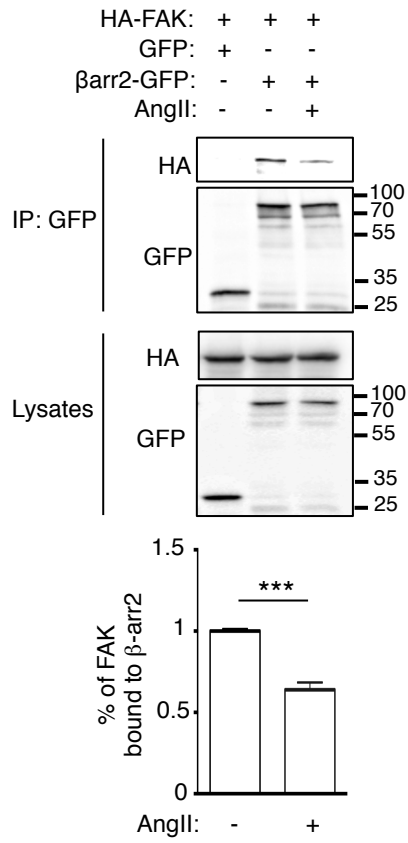


Supplementary Figure 7
Alexander et al- Ensen

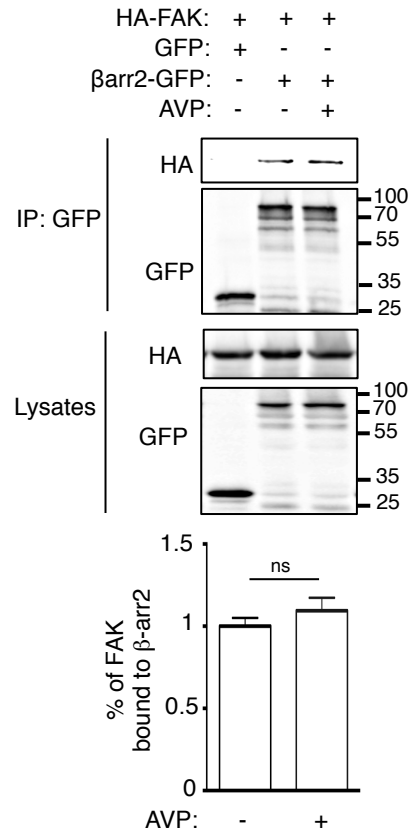


Supplementary Figure 8
Alexander et al- Ensen

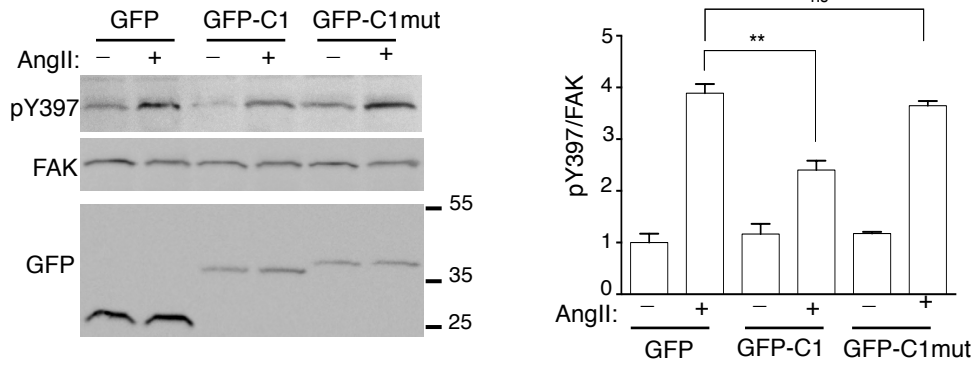
a



b



Supplementary Figure 9
Alexander et al- Enslin



Supplementary Figure 10
Alexander et al- Ensen

Plasmid	Primers
HA-FAK-Nter (1-402)	Forward primer: 5'CATCTAGCAAAGAATGGCTGCAGCATATCCATACGACGTCCCGGACT ACGCAGCTGCTTATCTTGA-3' Reverse primer: 5'-TCAAGATAAGCAGCTGCGTAGTCCGGGACGTCGTATGGATATGCTGC AGCCATTCTTTTGCTAGATG-3'
HA-FAK-ΔNter	Forward primer: 5'CACAGAATTCATGTATCCATACGACGTCCCGGACTACGCCGAGGAAGACACAA C-3' Reverse primer: 5'-ACCTGGTACCCACCCGATCCAGAG-3'
HA-FAK(376-1055)	Forward primer: 5'-GCACGGAATTCCTTTGGCCAACAATGAAAAGC-3' Reverse primer: 5'-CGGCGGTACCAGAGTTTTCTGAACAC-3'
RlucII-FAK	Forward primer: 5'-GAACCGGTGCGCCACCATGAC-3' Reverse primer: 5'-GAGATCCGGACTGCTCGTTCTT-3'
RlucII-FAKY397F	Forward primer: 5'-GAGACAGATGACTTTGCCGAGATCG -3' Reverse primer: 5'-CGATCTCGGCAAAGTCATCTGTCTC-3'
FAK-RLucII	Forward primer : 5'-GATCCGCTAGCATGGCAGCTGCTTATC-3' Reverse primer : 5'-ATATGGTACCGTGTGGCCGTGTCTG-3'
Gal4 AD FAK	Forward primer: 5'-TCGGGATCCTTGCTGCTTATCTT-3' Reverse primer: 5'-GGTGGATCCAGAGTTTTCTGAA-3'
Gal4 AD FAK-Nter	Forward primer: 5'-TCGGGATCCTTGCTGCTTATCTT 3' Reverse primer: 5'-GAAGGATCCTTAATCGATGATCTCGGCA-3'
Gal4 AD FAK-ΔNter	Forward primer: 5'-GGAGAATTCGAGGAAGACACATA-3' Reverse primer: 5'-GGTGGATCCAGAGTTTTCTGAA-3'
β-arrΔAP-2-GFP10	Forward primer: 5'-ACTTTGCCCGGCTTGCGCTGAAGGGGATG-3' Reverse primer: 5'-CATCCCCTTCAGCGCAAGCCGGGCAAAGT-3'
mCherry-β-arrΔAP-2	Forward primer: 5'-GAGGACTTTGCCCGGCTTGCGCTTAAGGGGATGAAGGATG-3' Reverse primer: 5'-CATCCTTCATCCCCTTAAGCGCAAGCCGGGCAAAGTCCTC-3'
HA-AT _{1A} R (DRY/AA)	Forward primer: 5'-TGTCTCAGCATCGCCGCTACCTGGCCATC-3' Reverse primer: 5'-GATGGCCAGGTAGGCGGCGATGCTGAGACA-3'

Supplementary Table 1. PCR Primers used to construct the different plasmids mentioned in the Methods section