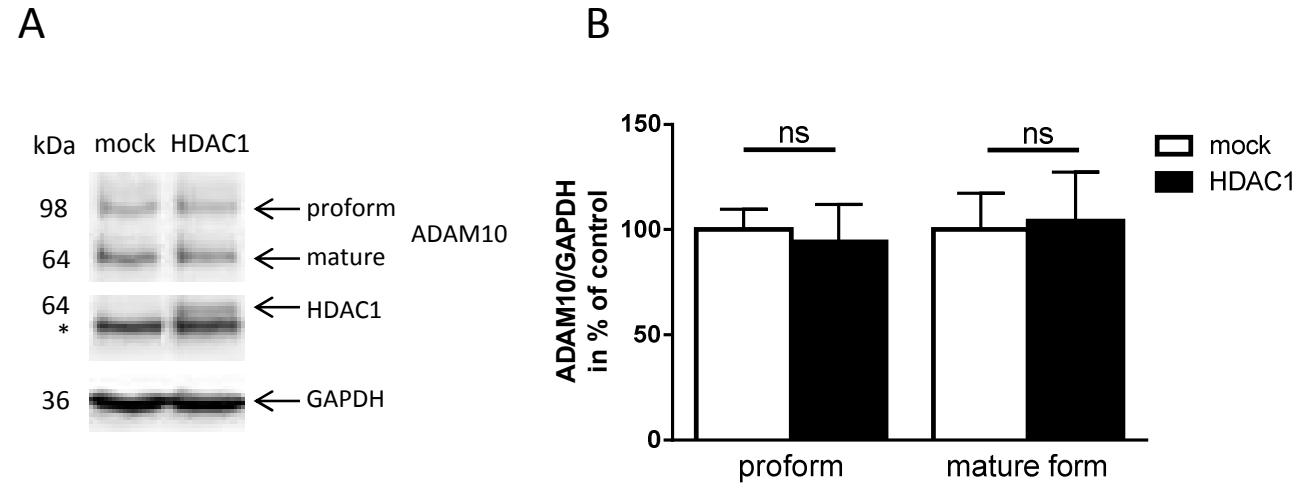


Suppl. Figure 3



Suppl. Figure 3: Effect of HDAC1 overexpression on protein levels of the proform and the mature form of ADAM10

SH-SY5Y cells were seeded on a 12-well plate at a density of 5×10^5 cells per well and transfected with either the HDAC1 expression vector or the control vector (mock). Subsequently, cells were incubated for 48 h. Preparation of whole cell lysates and western blotting was done as described before. A non-specific band in the HDAC1 western blot is labelled with an asterisk (*). Levels of each protein form (pro- or mature form) were normalized to values obtained for GAPDH. Values are given as mean \pm SD from two independent experiments conducted in quadruplicates. (ns, $p > 0.05$; Student's t-Test)