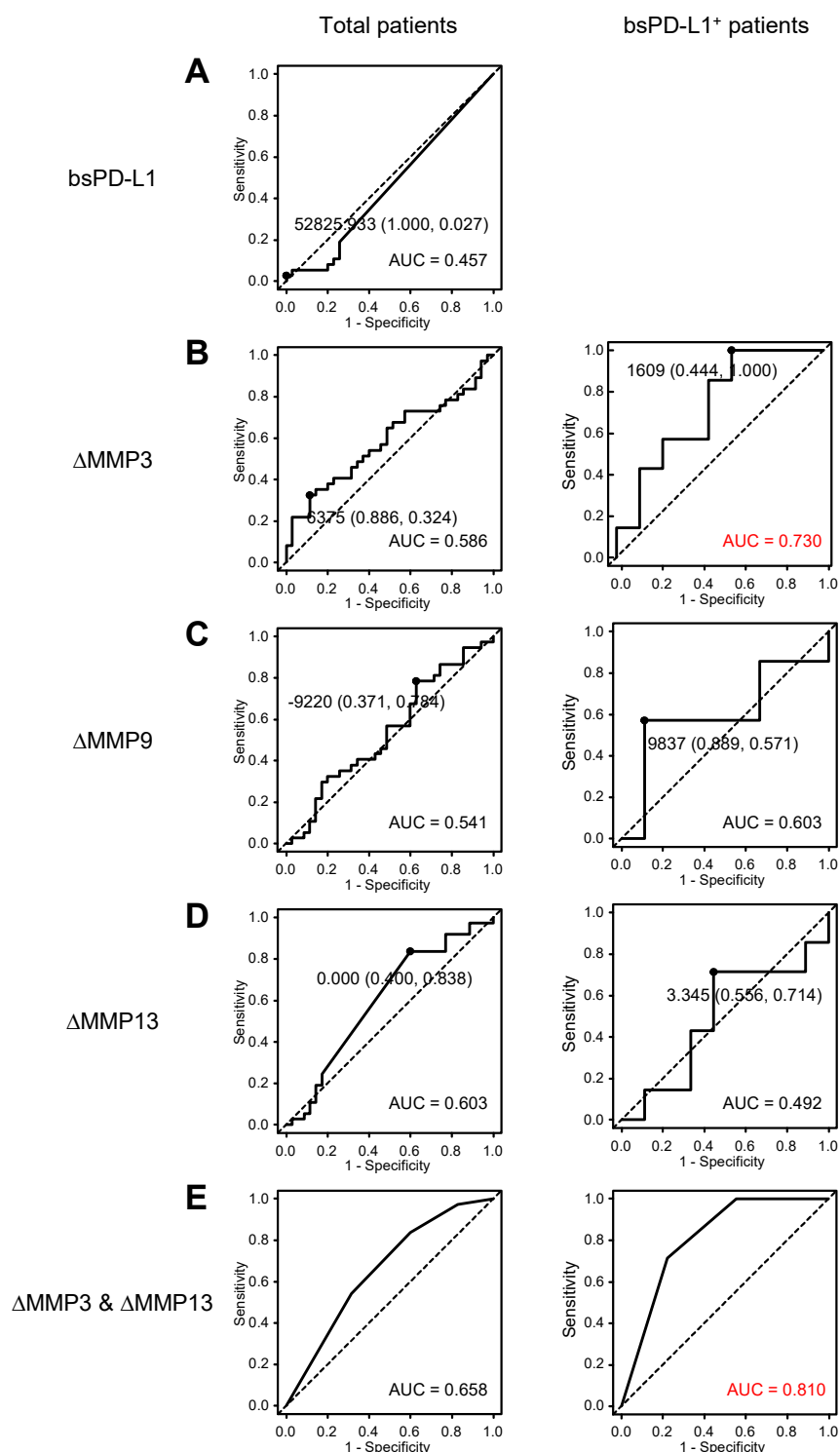


Supplementary Figure 3



ROC curves for OS in NSCLC patients. (A) ROC curves of bsPD-L1 in total patients (n = 72). (B) ROC curves of MMP3 change in total (n=72) and bsPD-L1⁺ (n = 16) patients. (C) ROC curves of MMP9 change in total (n=72) and bsPD-L1⁺ (n = 16) patients. (D) ROC curves of MMP13 change in total (n=72) and bsPD-L1⁺ (n = 16) patients. (E) Multivariate ROC curves of combined MMP3 and MMP13 changes in total (n=72) and bsPD-L1⁺ (n = 16) patients.