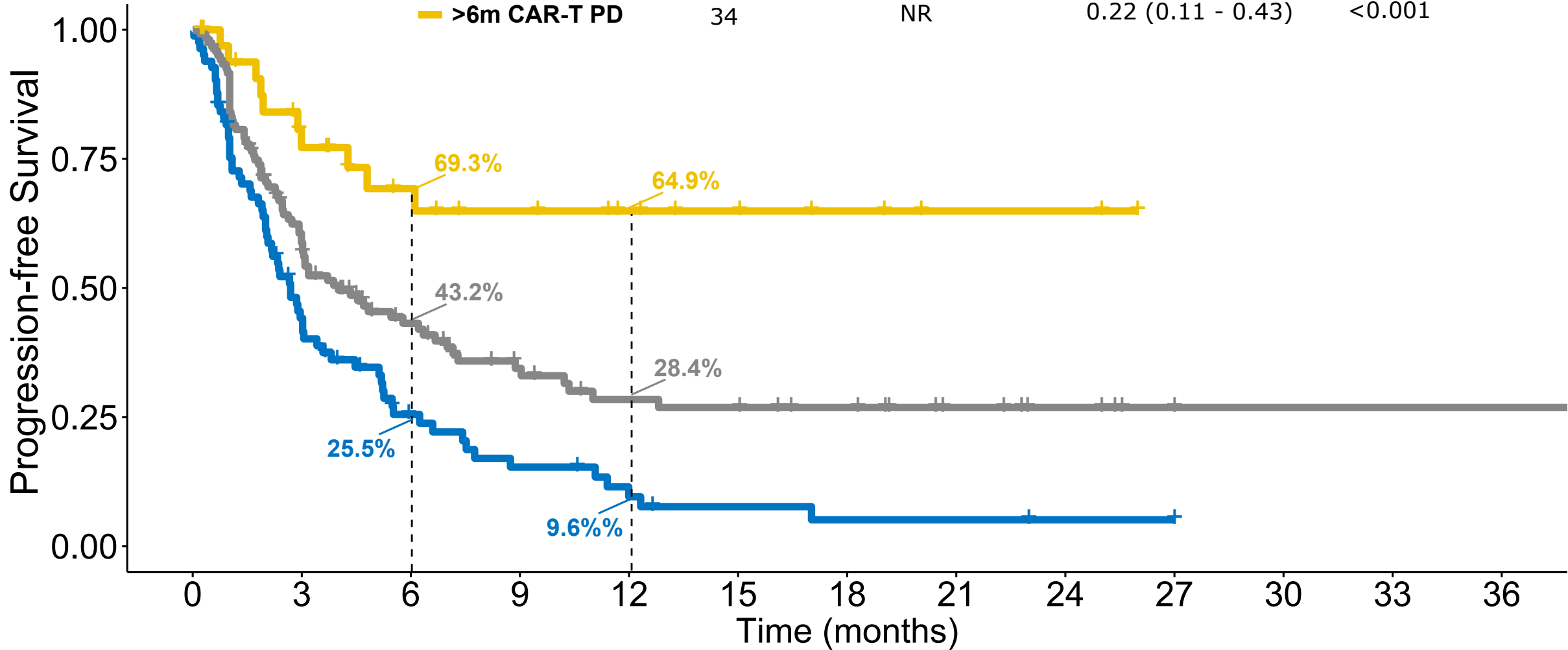


N. at risk

	0	3	6	9	12	15	18	21	24	27	30	33	36
<b>&lt;2m CAR-T PD</b>	120	93	57	34	26	23	19	14	9	4	1	1	1
<b>2-6m CAR-T PD</b>	83	52	32	17	11	7	7	6	5	4	2	0	0
<b>&gt;6m CAR-T PD</b>	34	27	23	15	11	8	5	2	2	0	0	0	0

Group	n	Median (CI95%)	HR (CI95%)	p.value
<2m CAR-T PD	82	2.69m (2.07 - 3.81)	Ref.	-
2-6m CAR-T PD	120	4.01m (3.02 - 7.00)	0.60 (0.43 - 0.83)	0.002
>6m CAR-T PD	34	NR	0.22 (0.11 - 0.43)	<0.001



N. at risk		0	3	6	9	12	15	18	21	24	27	30	33	36
<span style="color: blue;">■</span>	<2m CAR-T PD	120	65	38	24	18	17	14	9	6	2	1	1	1
<span style="color: grey;">■</span>	2-6m CAR-T PD	82	33	15	9	5	3	2	2	1	1	0	0	0
<span style="color: yellow;">■</span>	>6m CAR-T PD	34	22	16	12	9	6	4	2	2	0	0	0	0