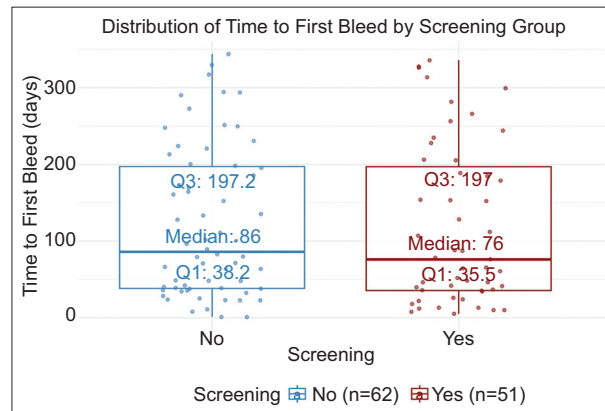


Supplementary material

Supplementary Table 1 Time to bleed after LVAD placement in both screened and unscreened cohort

	Screening (No)			Screening (Yes)		
	N	Mean (SD)	Median (IQR)	N	Mean (SD)	Median (IQR)
Time to 1st bleed (days)	62	121.53 (97.81)	86 (38-197)	51	118.08 (104.39)	76 (36-197)

LVAD, left ventricular assist device; IQR, interquartile range; SD, standard deviation



Supplementary Figure 1 Boxplot depicting time to first post-LVAD bleed in the endoscopy and no-preoperative-endoscopy cohorts. The boxplot on the left corresponds to the no-endoscopy cohort (median: 86 days, IQR: 38-197), while the one on the right represents the preoperative endoscopy cohort (median: 76 days, IQR: 36-197)
LVAD, left ventricular assist device; IQR, interquartile range