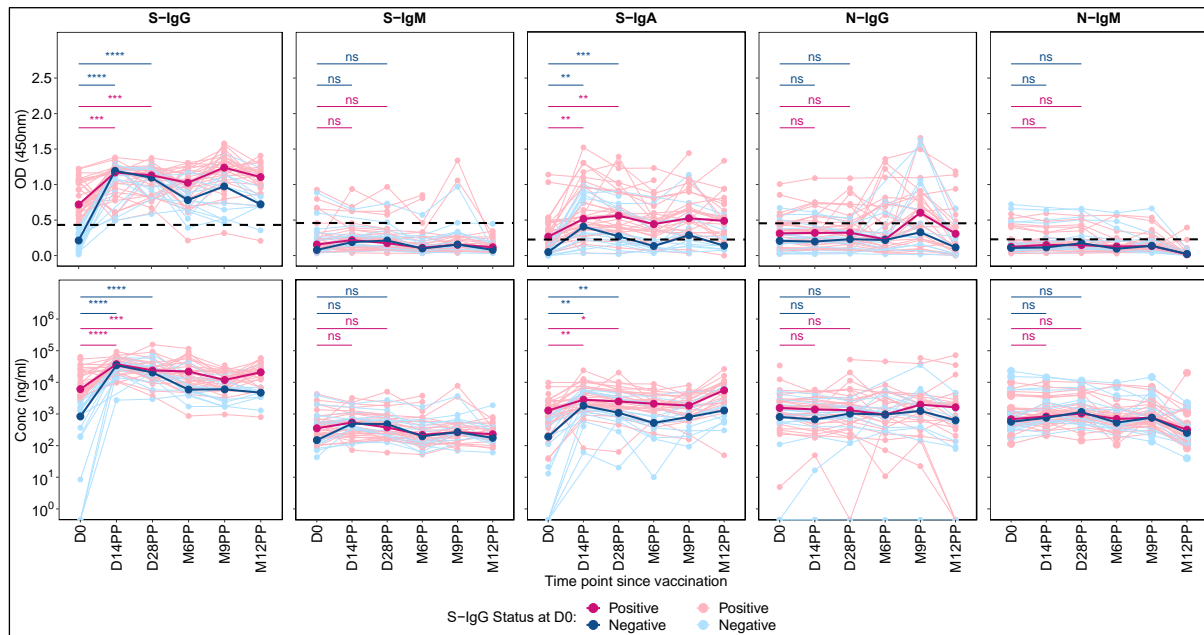


Supplementary Figures

Supplementary Figure 1: Comparative Profiling of Median Spike-Directed Antibody Responses Post-Janssen Janssen Ad26.COV2.S COVID-19 Vaccination Stratified by Baseline S-IgG Seropositivity, excluding all subjects with breakthrough infection



Supplementary Figure 1: Comparative Profiling of Median Spike-Directed Antibody Responses Post-Janssen Janssen Ad26.COV2.S COVID-19 Vaccination Stratified by Baseline S-IgG Seropositivity, excluding all subjects with breakthrough infection

Supplementary Figure 1 shows Individual profiles of subjects over time categorised by S-IgG baseline seropositivity, excluding break through subjects. Total participants, $n = 50$, Baseline S-IgG+, $n = 34$ and baseline S-IgG-, $n = 16$. Subjects are classified as S-IgG positive (shown in red) if their baseline S-IgG levels are at or above the established cutoff value and S-IgG negative (illustrated in blue) if below this threshold. Differences in antibody responses between D0 and D14PP as well as D0 and D28PP for each subgroup were assessed using a Wilcoxon test. Significance bars (red for baseline S-IgG positive and blue for baseline S-IgG negative) indicate the levels of significance; : 'ns' for $p > 0.05$ (non-significant), '*' for $p \leq 0.05$, '**' for $p < 0.01$, '***' for $p < 0.001$, and '****' for $p < 0.0001$.