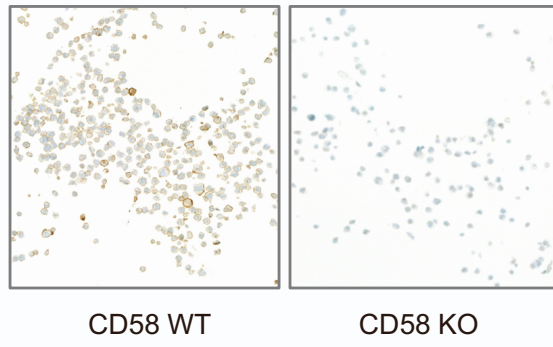


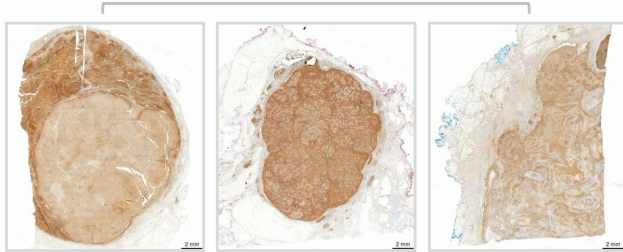
Figure S5

A

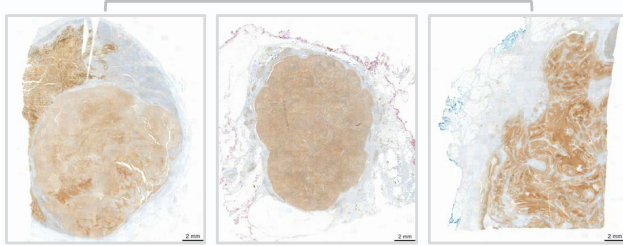


B

Melanoma  
CMTM6

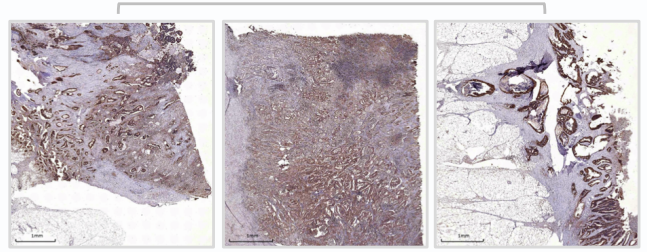


CD58

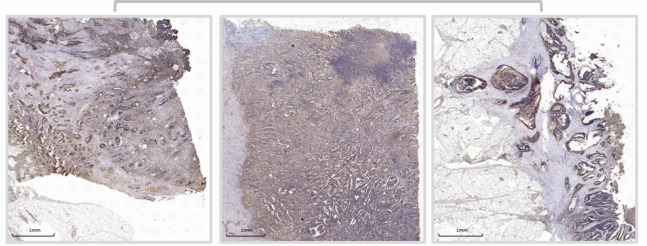


C

Colon cancer  
CMTM6



CD58



**Figure S5. Co-localization of CMTM6 and CD58 in human tumors, Related to Figure 4**

**(A)** IHC analysis of CD58 expression in WT and CD58 KO cells. Parental (WT) and CD58-knockout (CD58 KO) 8505C cells were fixed, formalin embedded, sectioned and loaded on slides. The prepared samples were stained with a monoclonal antibody (clone #126, Novus Biologicals) for CD58 (brown). The IHC analysis of the WT and CD58 KO cells demonstrates a high degree of specificity of the CD58 antibody.

**(B-C)** Sequential sections from tumor biopsies of three melanoma patients (B) and three colon cancer patients (C) were stained for CMTM6 and CD58, showing co-localization of CD58 with CMTM6. Scale bar: 2mm (B); 1mm (C).