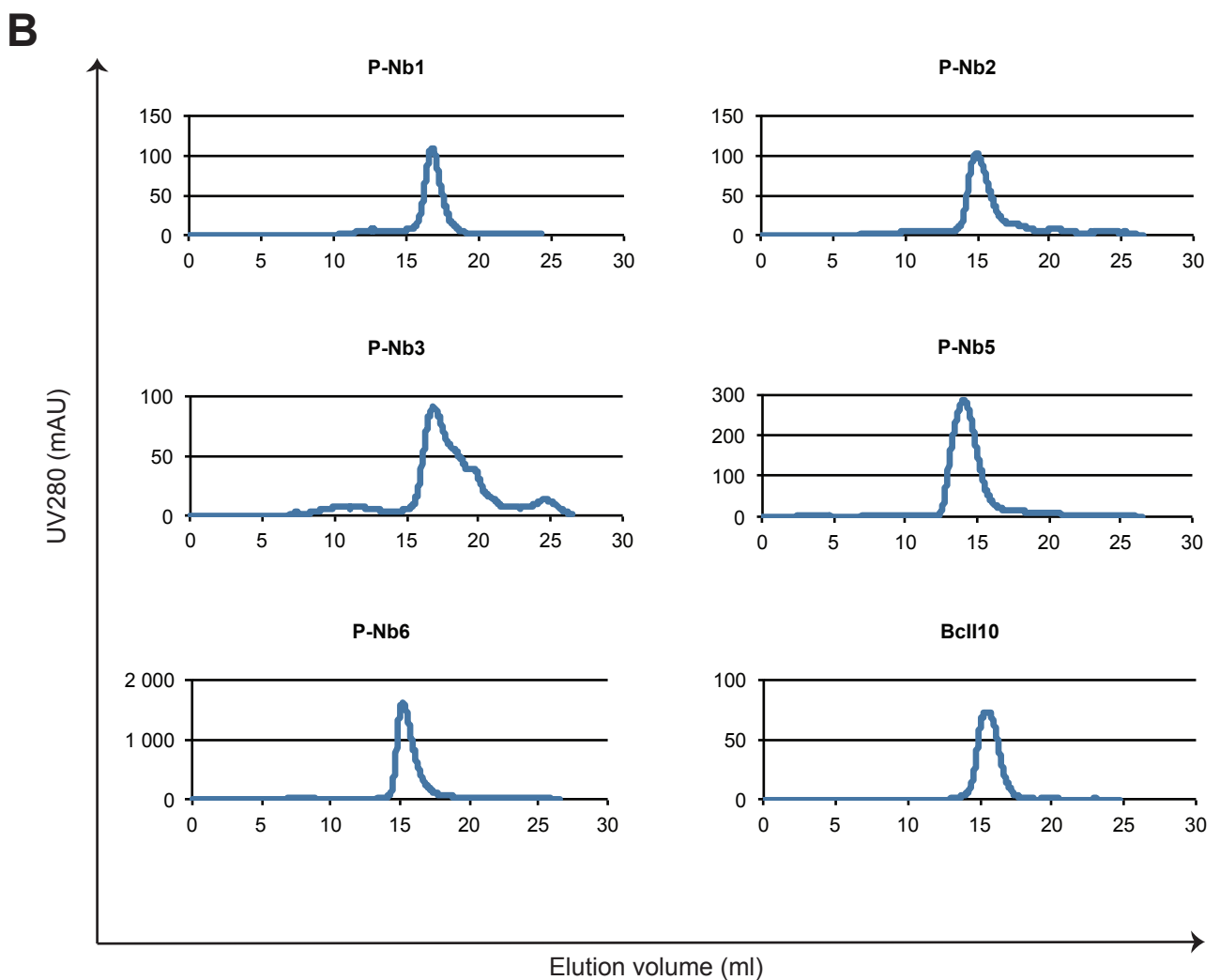
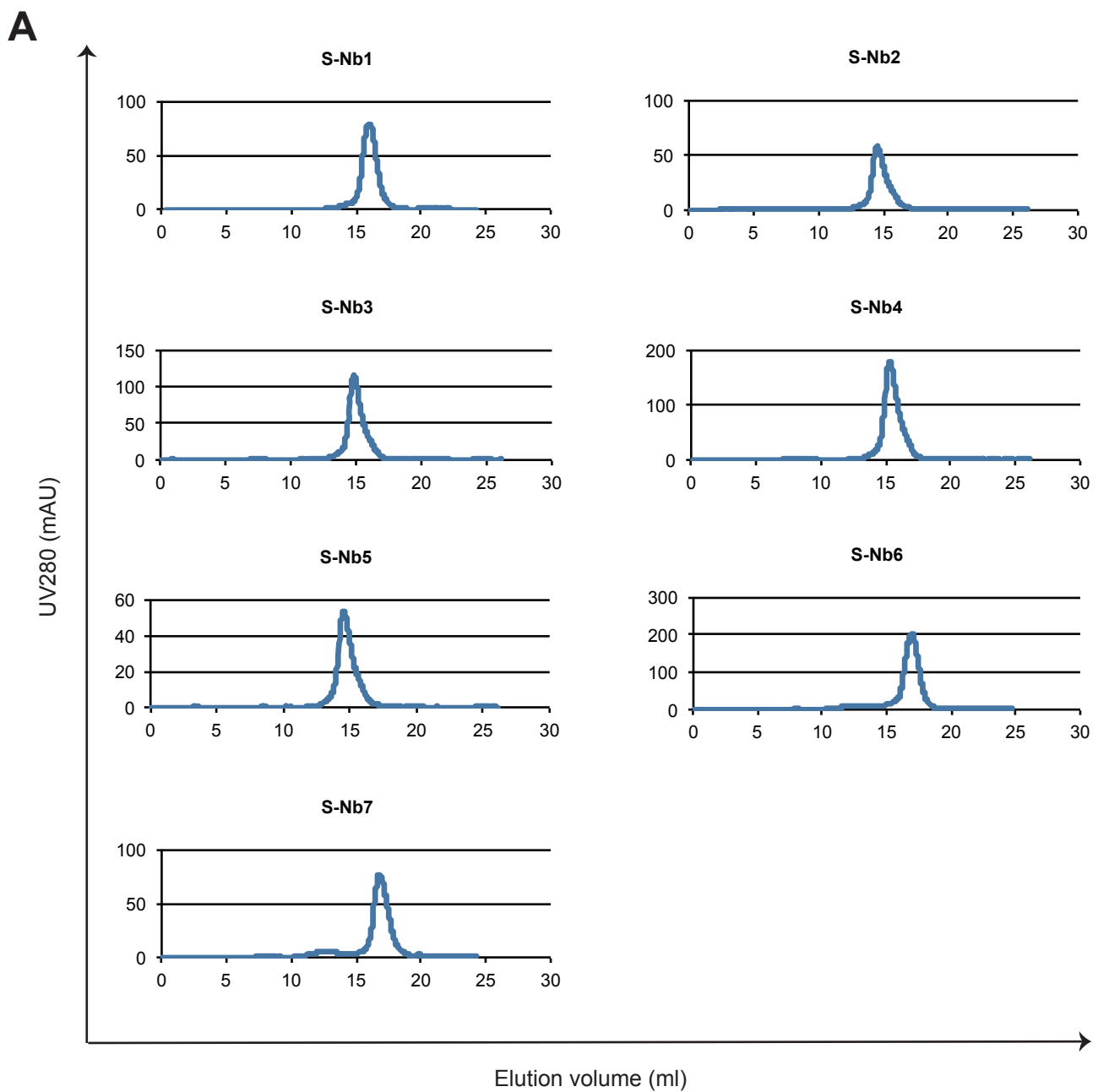


Online resource 2



Size exclusion chromatograms for Nanobodies from A) the staphylococcal selection and B) the phage display selection. The samples were eluted in 200 μ l fractions, and only the fractions in the middle of the peak corresponding to monomeric protein were collected. Nanobodies from the staphylococcal selection are denoted S-NbX and Nanobodies from the phage selection are denoted P-NbX. Bcl10 is the negative control Nanobody.