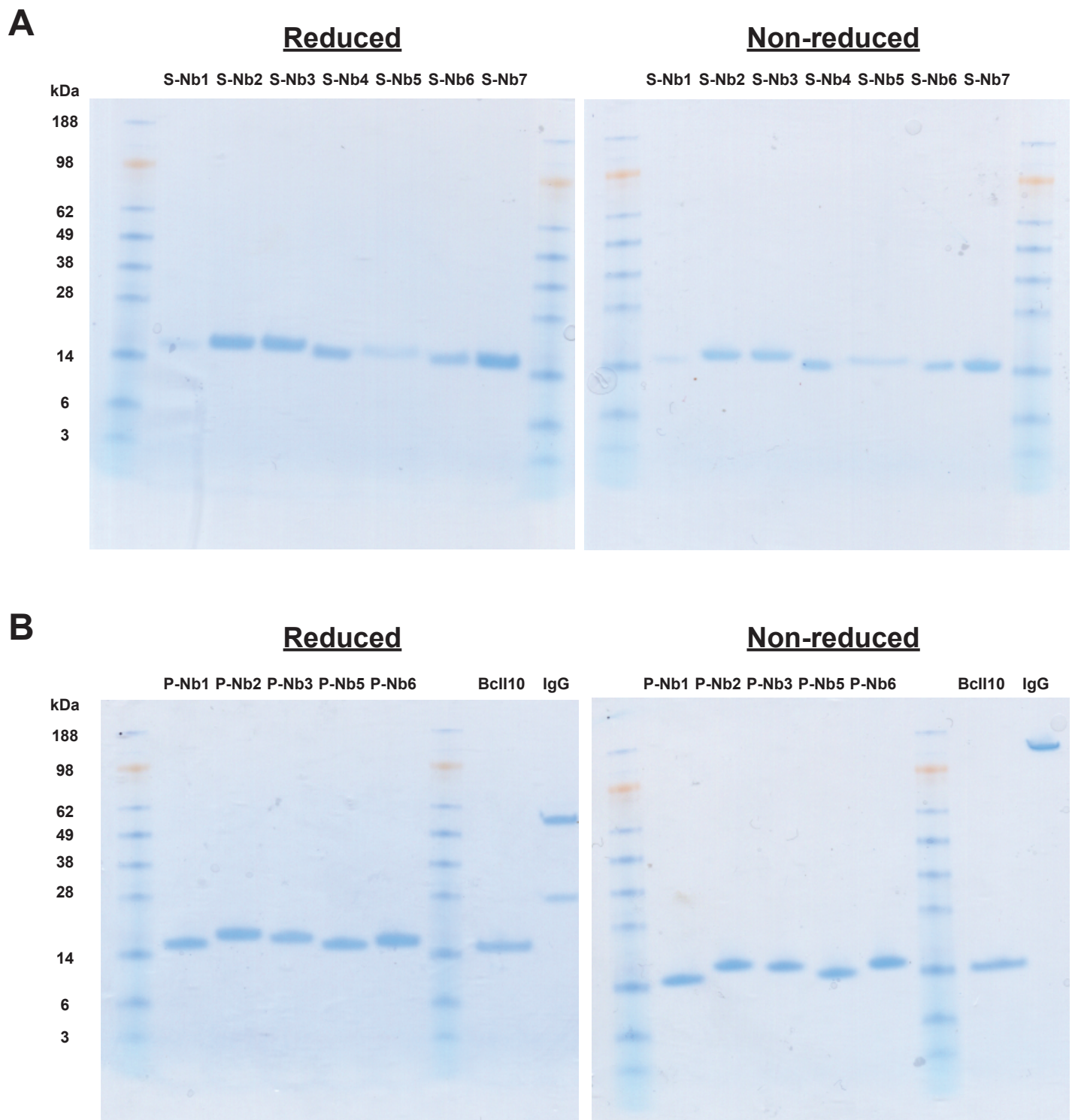


### Online resource 3



**SDS-PAGE gels with purified Nanobodies from staphylococcal selection (A) and phage selection (B).** Nanobodies were analyzed by SDS-PAGE under reducing as well as non-reducing conditions. As a control, a mouse IgG was included, giving rise to two bands under reducing conditions and a single band under non-reducing conditions. Nanobodies from the staphylococcal selection are denoted S-NbX and Nanobodies from the phage selection are denoted P-NbX. BclI10 is the negative control Nanobody.