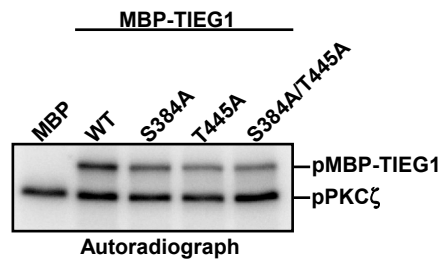


## Supplementary figure S1



**Supplementary figure S1:** Mutation of Ser 384 and/or Thr 445 to alanine reduces the phosphorylation of full-length TIEG1. MBP, MBP-TIEG wild type, MBP-TIEG S384A, MBP-TIEG1 T445A or MBP-TIEG1 S384A/T445A were incubated in the presence of [ $\gamma$ - $^{32}$ P]-ATP and recombinant PKC $\zeta$ . The reactions were separated by SDS-PAGE and the phosphorylated proteins were detected by autoradiography.