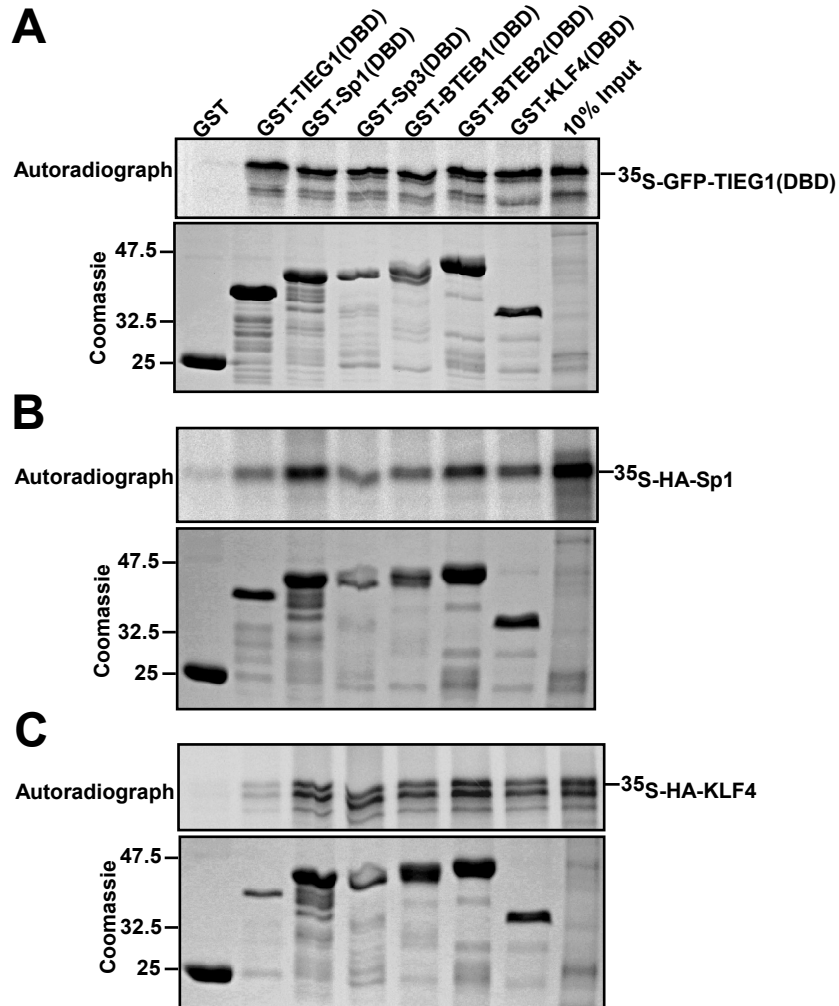


Supplementary figure S2



Supplementary figure S2: KLF family proteins have a strong tendency to homo- and heterodimerize. GST pull-down assays were carried out using bacterially expressed GST, or the indicated GST-tagged proteins, and *in vitro* translated either GFP-TIEG1(DBD) (A), full-length HA-Sp1 (B), or full-length HA-KLF4 (C). Autoradiographs are presented in the upper panels whereas Coomassie brilliant blue stained SDS-polyacrylamide gels are shown in the lower panels.