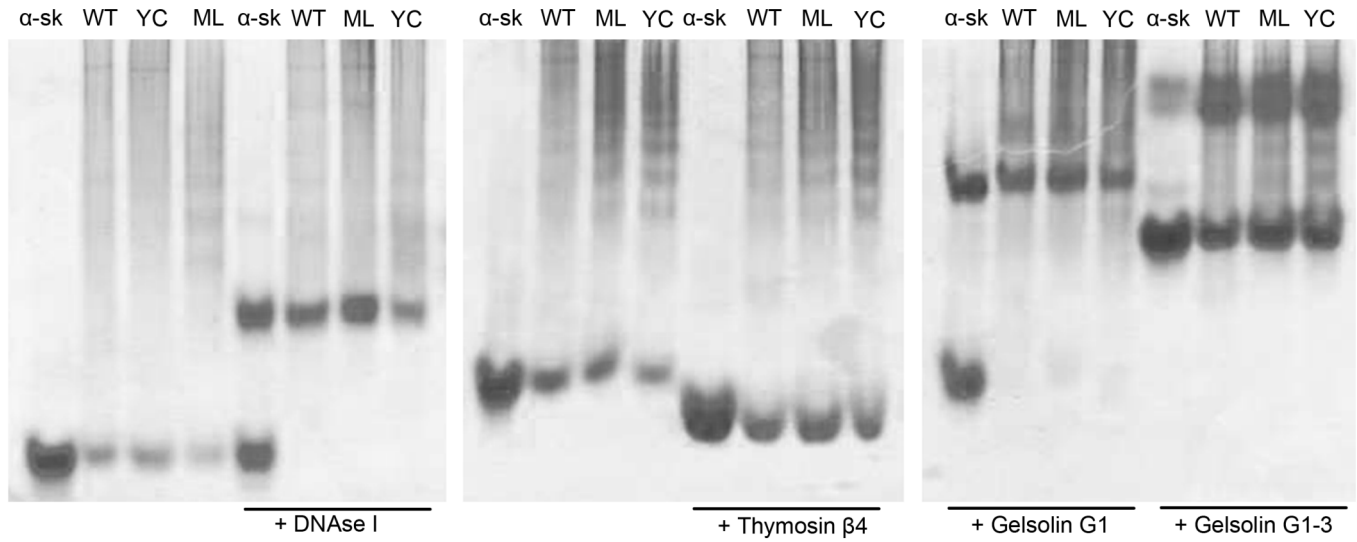


Functional characterization of the human α -cardiac actin mutations Y166C and M305L involved in hypertrophic cardiomyopathy

Mirco Müller, Antonina Joanna Mazur, Elmar Behrmann, Ralph P. Diensthuber, Michael B. Radke, Zheng Qu, Christoph Littwitz, Stefan Raunser, Cora-Ann Schoenenberger, Dietmar J. Manstein, and Hans Georg Mannherz

Corresponding author: Dr. Hans Georg Mannherz; hans.g.mannherz@rub.de

Online Resource 3: Native gel electrophoresis with actin binding proteins



α -sk: rabbit α -skeletal muscle actin, WT: α -cardiac actin WT, ML: α -cardiac actin M305L, YC: α -cardiac actin Y166C